

159 BLEECKER STREET

FACADE RENOVATION

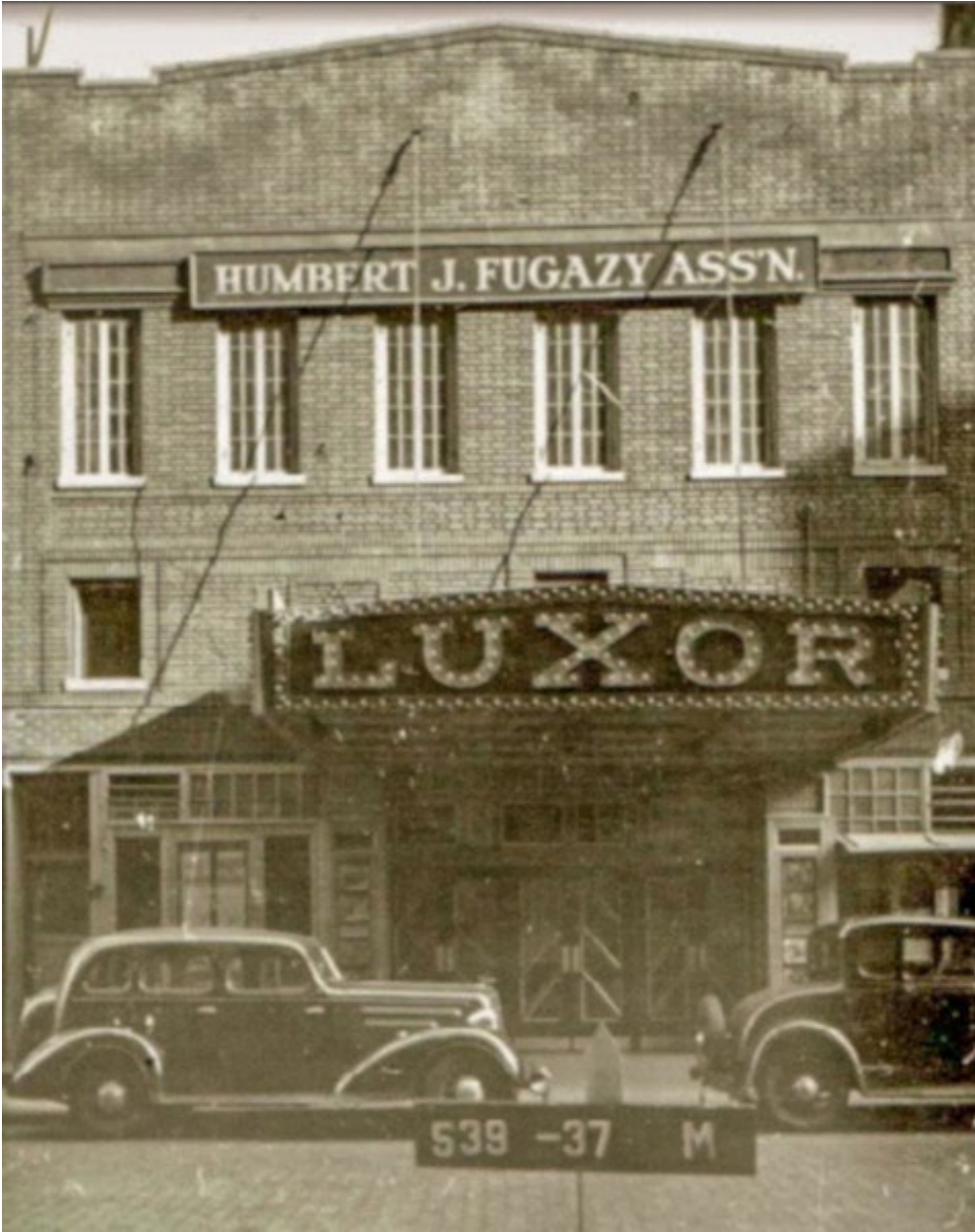
JULY 15TH 2025



SCOPE:

- REPLACEMENT OF EXISTING COMMERCIAL STOREFRONT
- NEW WINDOWS
- MARQUEE RE-CLADDING

20TH CENTURY PHOTOS



1939



undated
(1950s or early 1960s)



1976

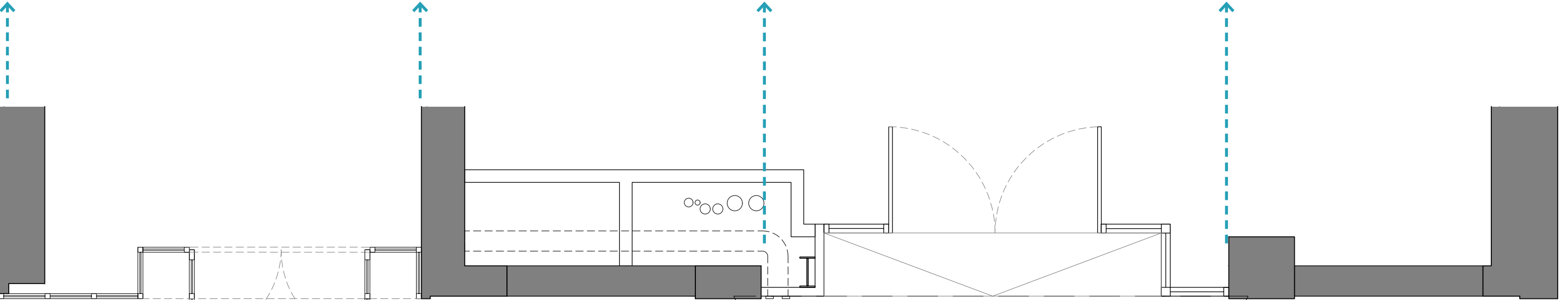


2025 (all)

EXISTING FACADE

ELEVATION

PLAN



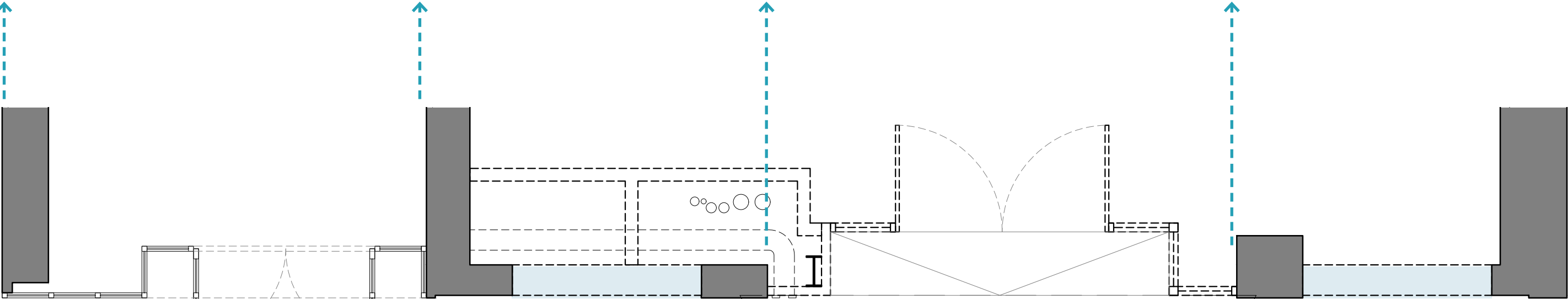
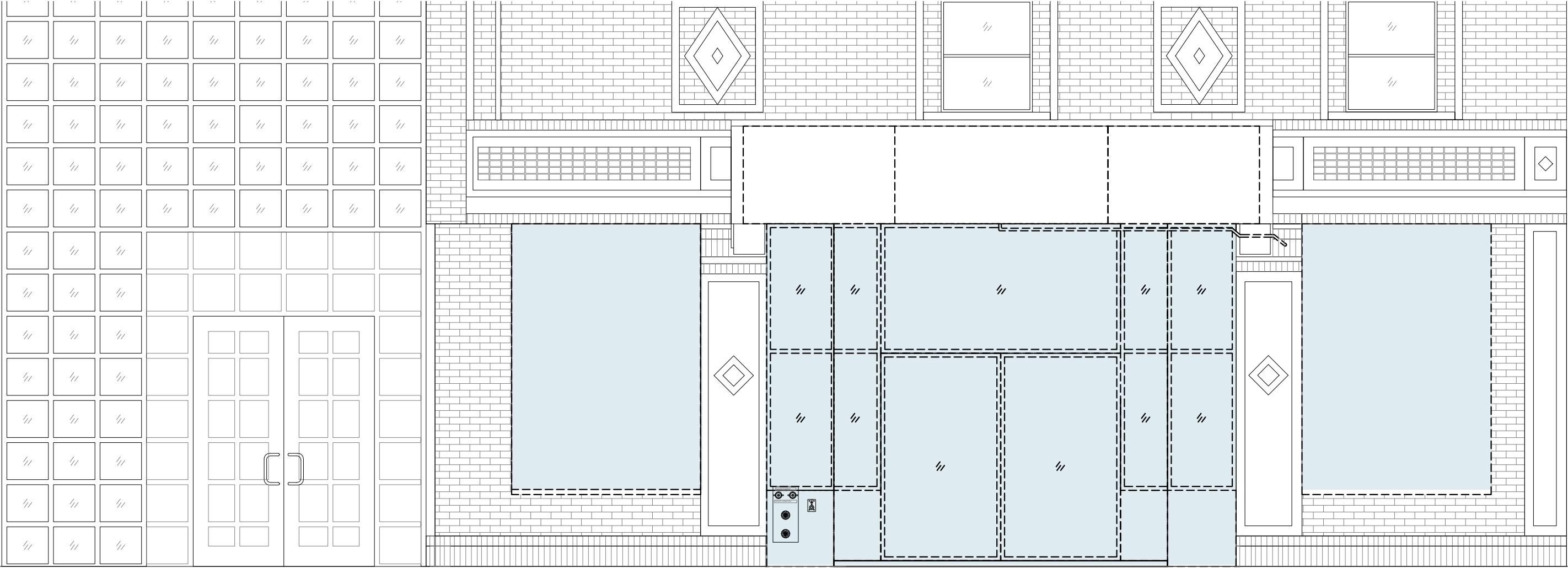
RESIDENTIAL
ENTRANCE

EXISTING COMMERCIAL
STOREFRONT ENTRANCE

REMOVALS

ELEVATION

PLAN



RESIDENTIAL
ENTRANCE

EXISTING COMMERCIAL
STOREFRONT ENTRANCE

PROPOSED FACADE

ELEVATION



NEW PAINTED METAL MARQUEE CLADDING
WITH LINEAR NEON HALO LIGHTING

EXISTING BUILDING
RESIDENTIAL ENTRANCE

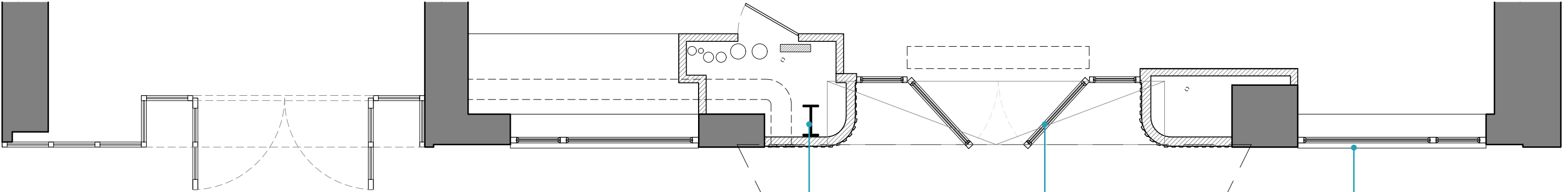
NEW WINDOWS (BOTH
SIDES OF FACADE)

EXISTING STANDPIPE
TO REMAIN IN PLACE

REPLACEMENT STOREFRONT
AND SIDE LITES

ALL BRICK SHOWN
IS EXISTING

PLAN



EXISTING STEEL BEAM AND BUILD-
ING INFRASTRUCTURE / UTILITIES

REPLACEMENT STOREFRONT
DOORS AND SIDE LITES

NEW WINDOWS
(BOTH SIDES)

PROPOSED MATERIALS



1 CROSS-REEEDED GLASS



2 REEDED GLASS



4 STANDARD BLACK CHARCOAL TBD (BY FABRICATOR)



5 MINI BOX RIB METAL PANEL

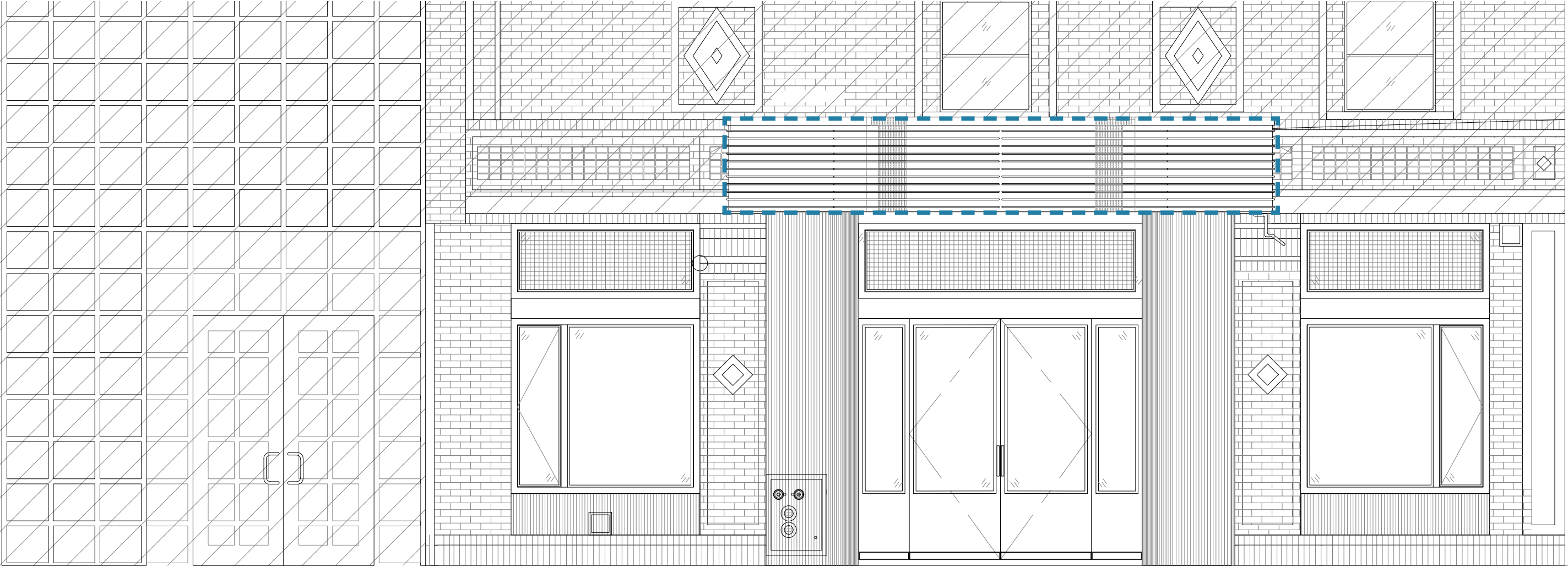


6 HALO LIT NEON

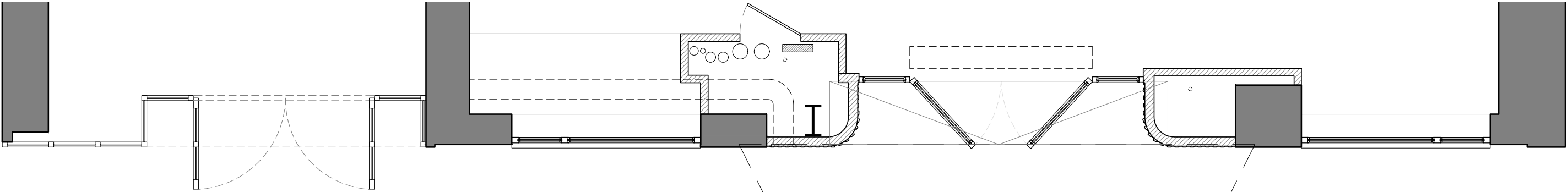


PROPOSED FACADE

ELEVATION



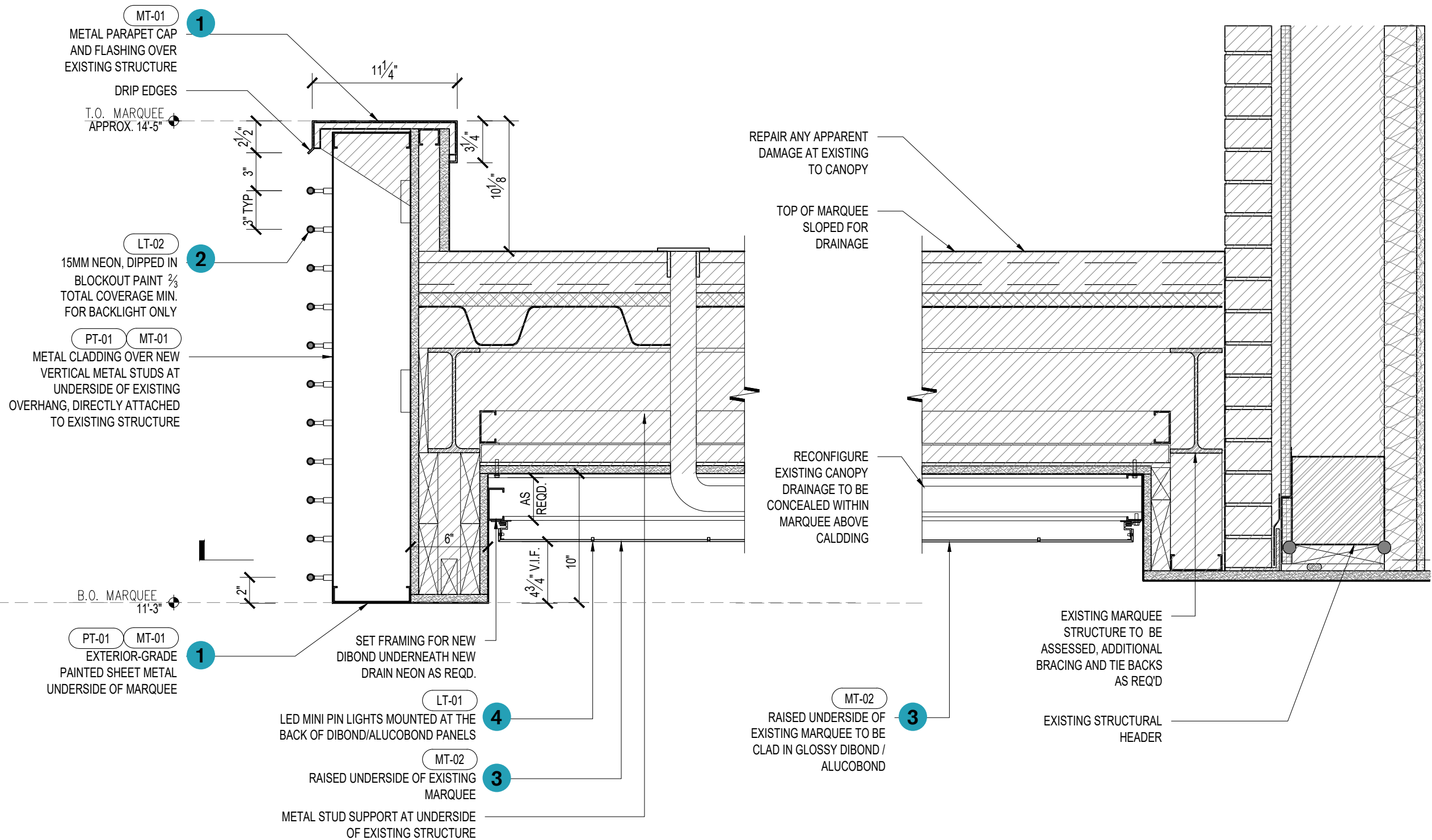
PLAN



CURRENT MARQUEE PHOTOS



MARQUEE SECTION AND MATERIALS

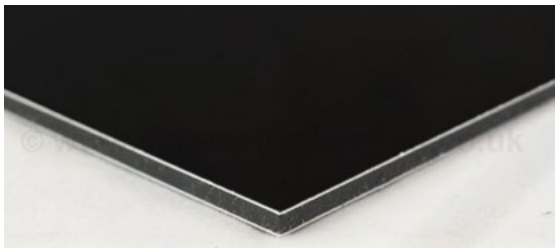


RAL7021
BLACK GREY

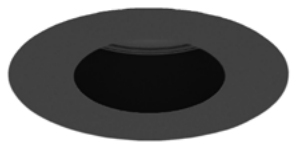
1 POWDER-COATED METAL



2 POWDER-COATED METAL

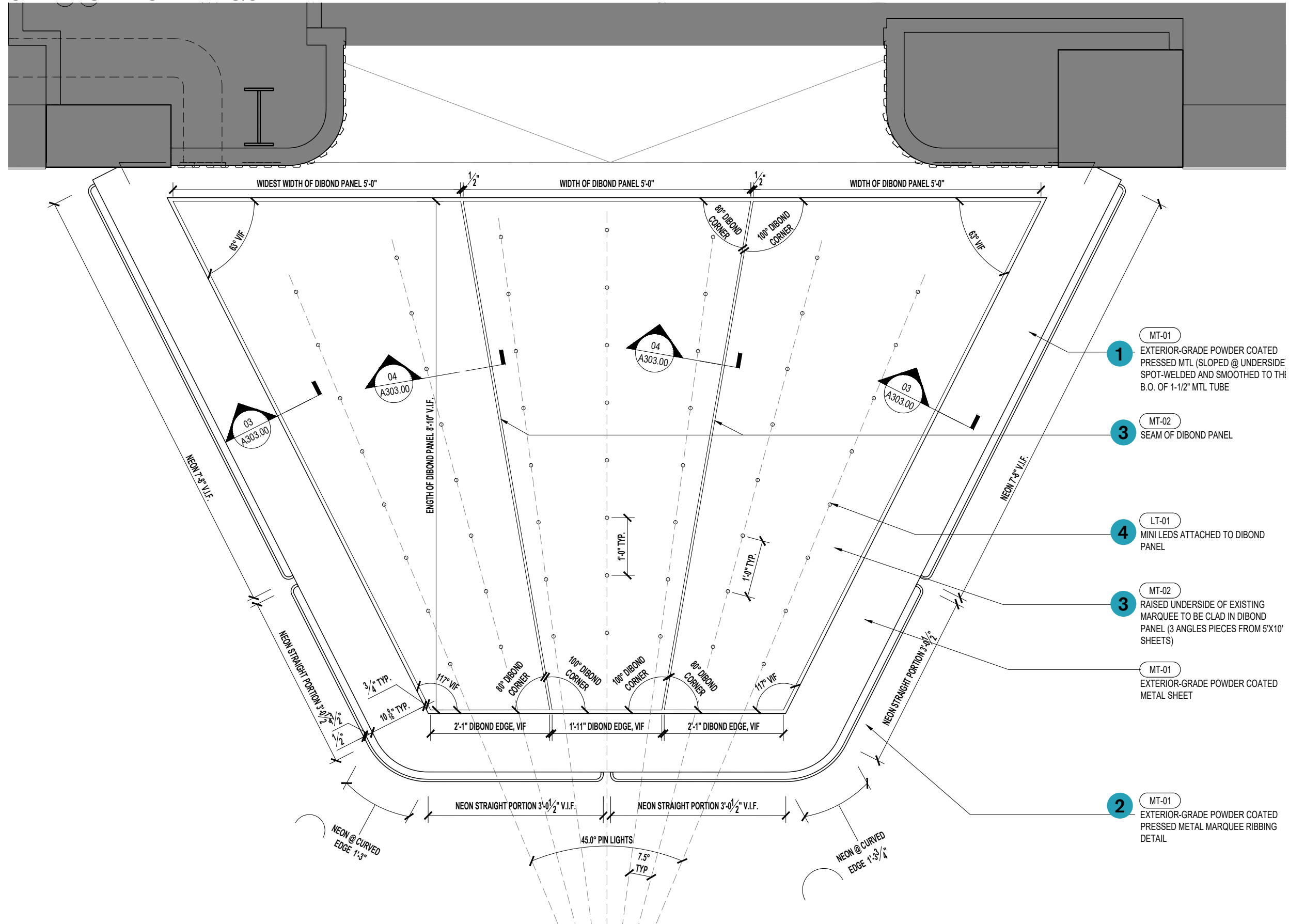


3 GLOSSY BLACK DIBOND (ALUMINUM COMPOSITE)



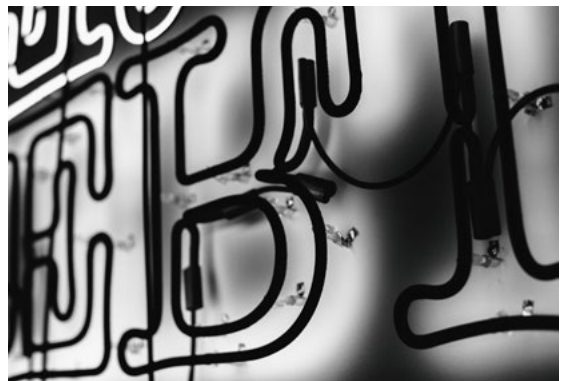
4 ROUND PINHOLE DOWNLIGHTS AETHER ATOMIC 1/2" DIAMETER BY WAC OR EQUAL

UNDERSIDE OF MARQUEE

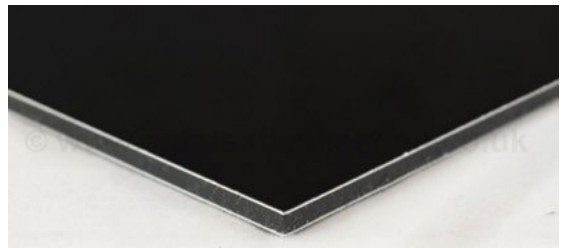


RAL7021
BLACK GREY

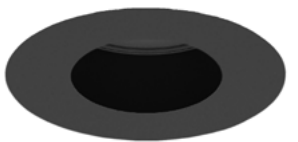
1 POWDER-COATED METAL



2 POWDER-COATED METAL

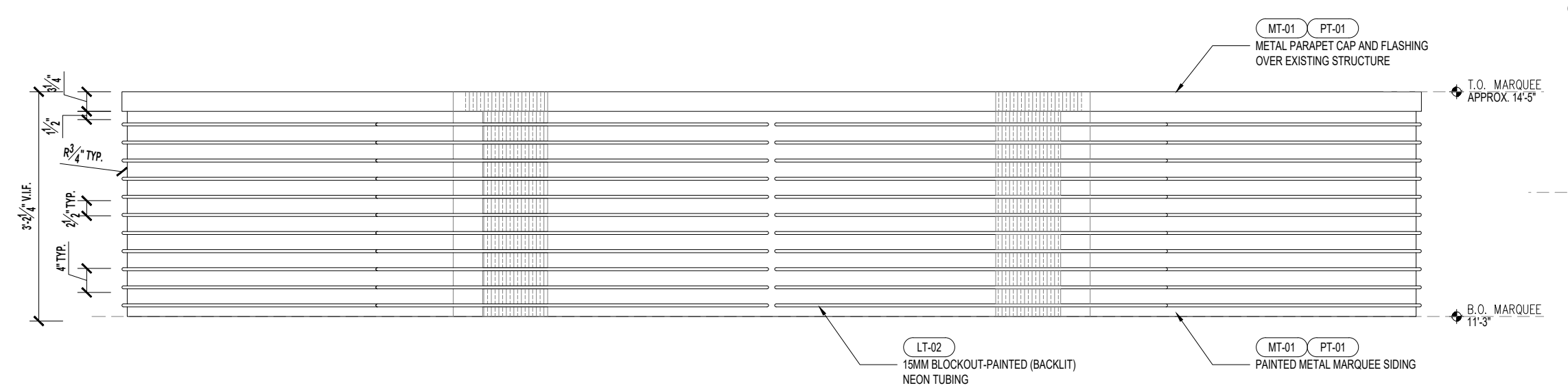


3 GLOSSY BLACK DIBOND (ALUMINUM COMPOSITE)



**4 ROUND PINHOLE DOWNLIGHTS
AETHER ATOMIC 1/2" DIAMETER BY
WAC OR EQUAL**

MARQUEE FRONT ELEVATION AND NEON DETAIL



DETAILS OF ARTWORK BY GLENN LIGON

