

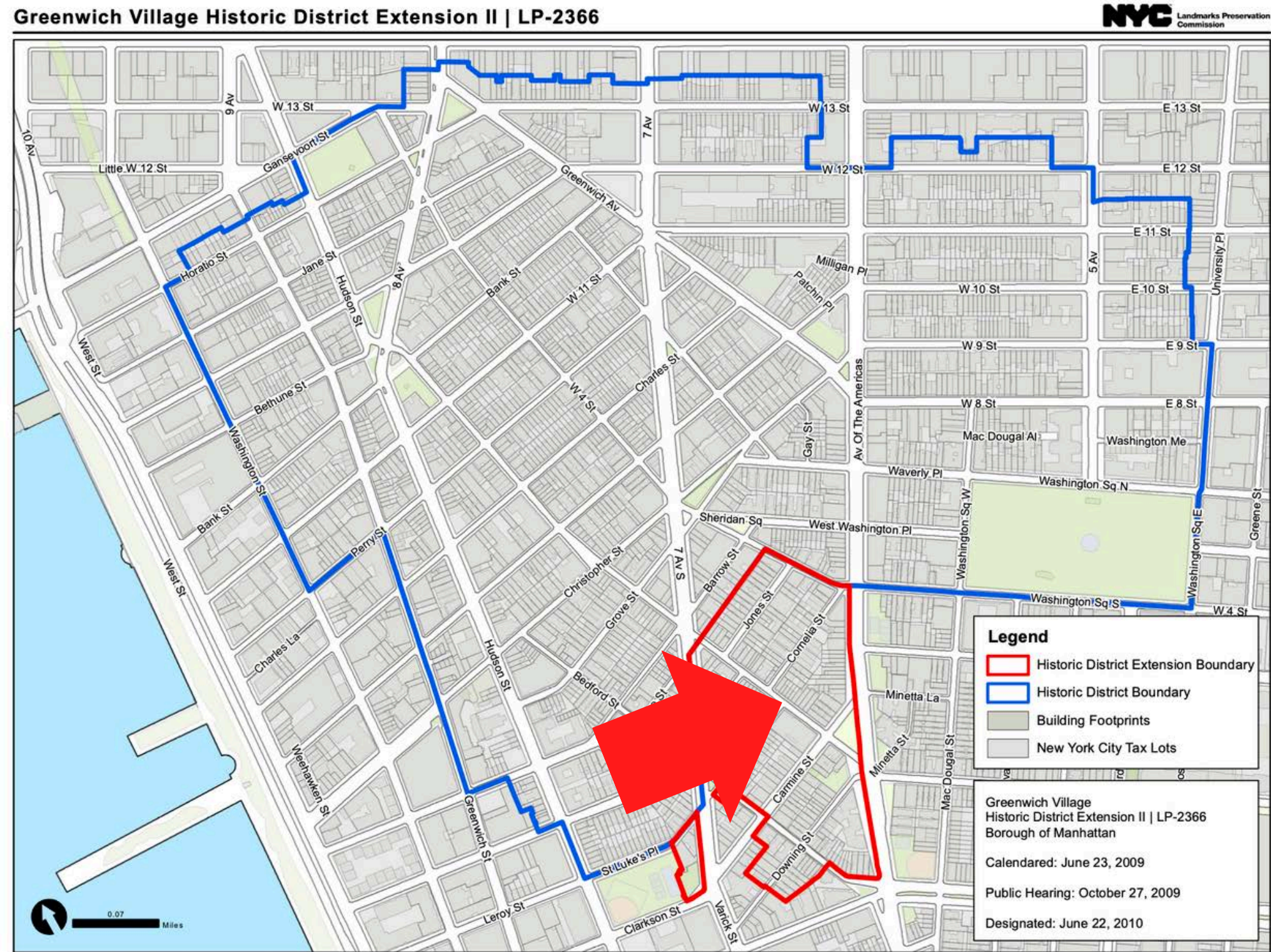
247 Bleecker Street, New York, NY 10014

Colorful Natalie

Application to maintain the painted exterior storefront, currently under a temporary permit



View of the front of the building



Located between Carmine and Cornelia St.



1939, 247 Bleeker
New York City Municipal Archives



1983, 247 Bleeker
New York City Municipal Archives



2025, 247 Bleeker



1983, 249 Bleecker

New York City Municipal Archives



1983, 182 Bleecker

New York City Municipal Archives



1983, 245 Bleecker

New York City Municipal Archives

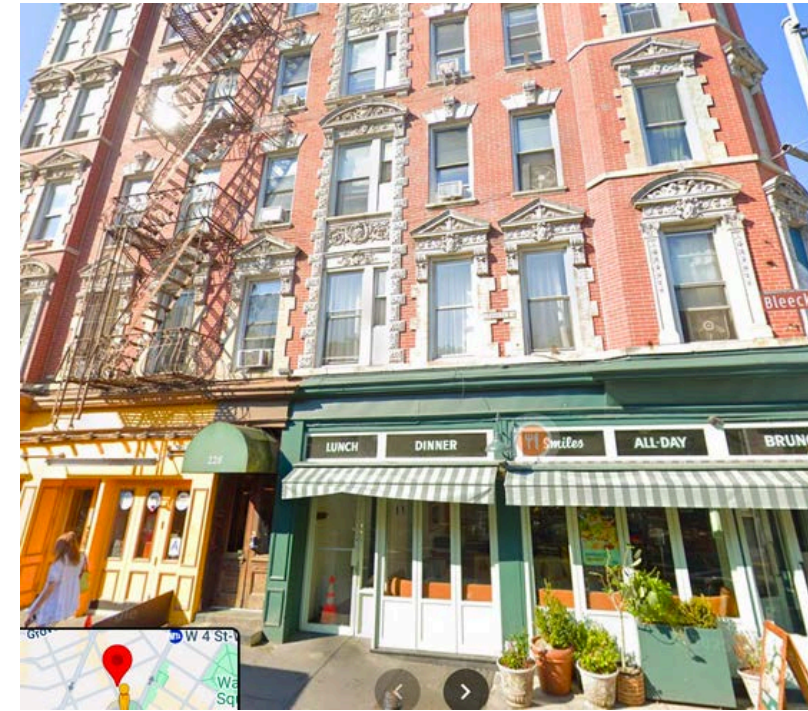
Row Houses Near 247 Bleecker St



Frederick Sterner's Home



7th Ave South



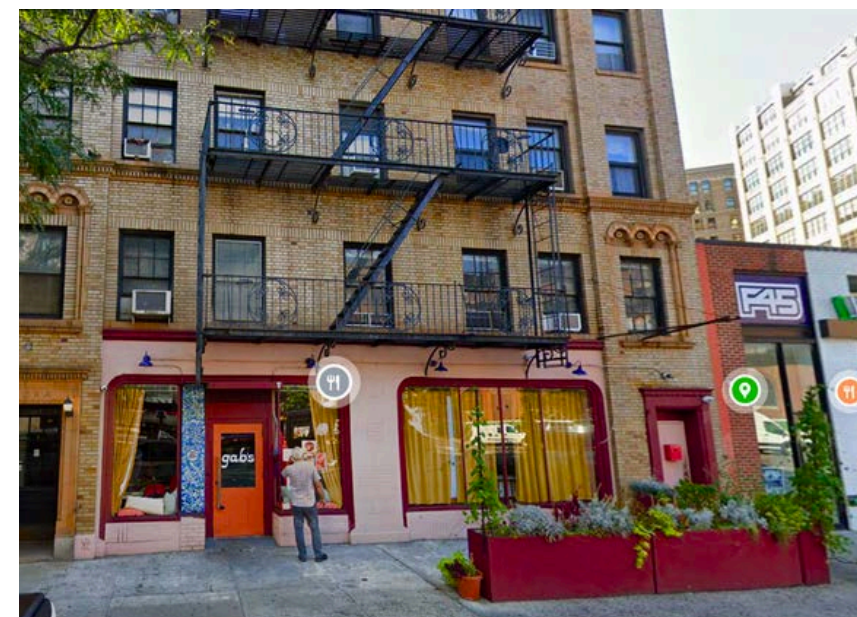
Carmine and Bleecker



Bleecker and Charles



Bedford and Morton



Carmine and Bedford



6th Ave and W 4th

Current Neighbors of 247 Bleecker St



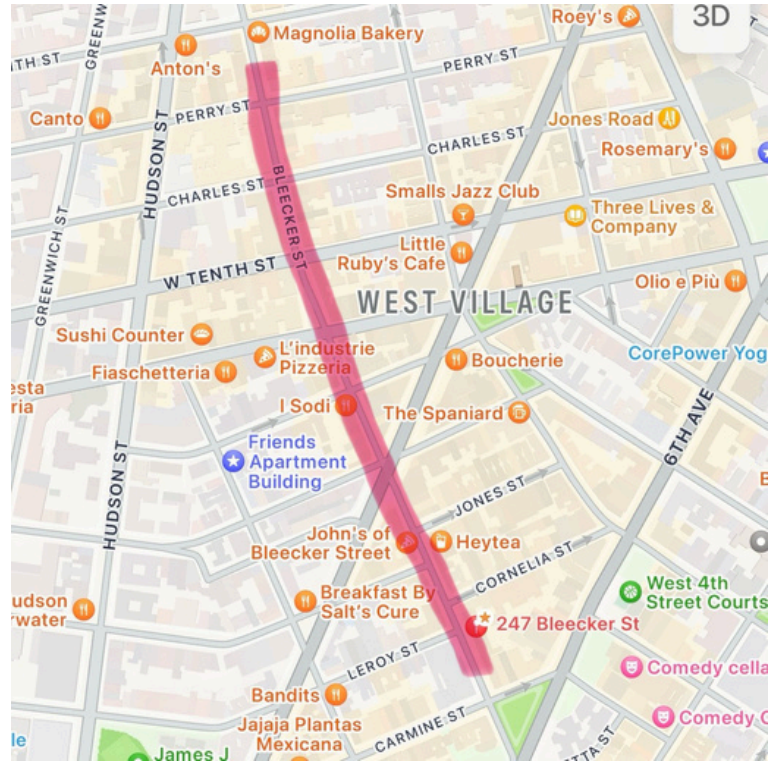
Next-Door Neighbors



Directly Across Street



Current Streetscape Context



374 Bleeker



388 Bleeker



192 Bleeker



262 Bleeker



260 Bleeker



228 Bleeker



266 Bleeker

Previous Tenants at 247 Bleecker St



*Hemped/Bliss Boutique, 2018-2024
Unlicensed cannabis dispensary*



L'Occitane, 2009-2017



Present



184 7th Ave S, New York, NY 10014, lil sweet treat



*Sol Moscot, LES
1915-Present*



*Vesuvio Bakery, 160 Prince Street
1920-Present*



*Peter Pan Donut & Pastry, Brooklyn
1950-Present*



*Pearl Paint, 208 Canal Street
1933-2014*



Previous Condition: Prior tenant was unlicensed cannabis dispensary

Current Condition: Pink exterior

