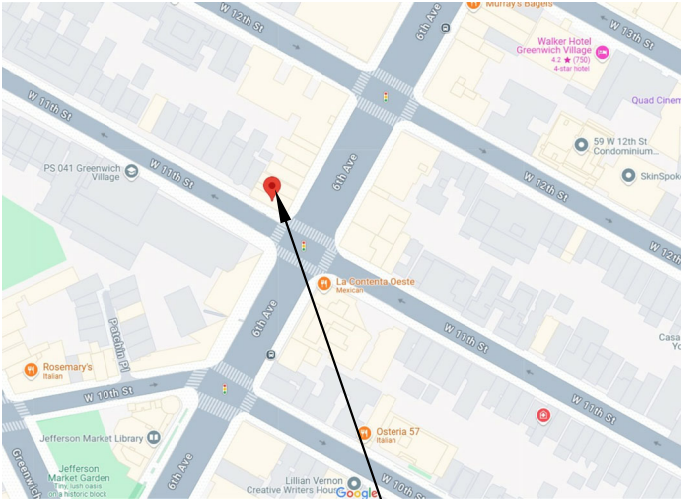


# LEGALIZATION FACADE RENOVATION & NEW SIGN

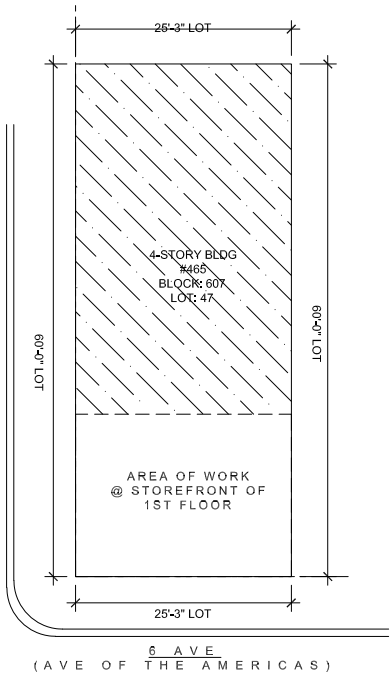
465 6th Ave. New York, NY 10011 - ROMA PIZZA



AREA OF WORK



PLOT PLAN:



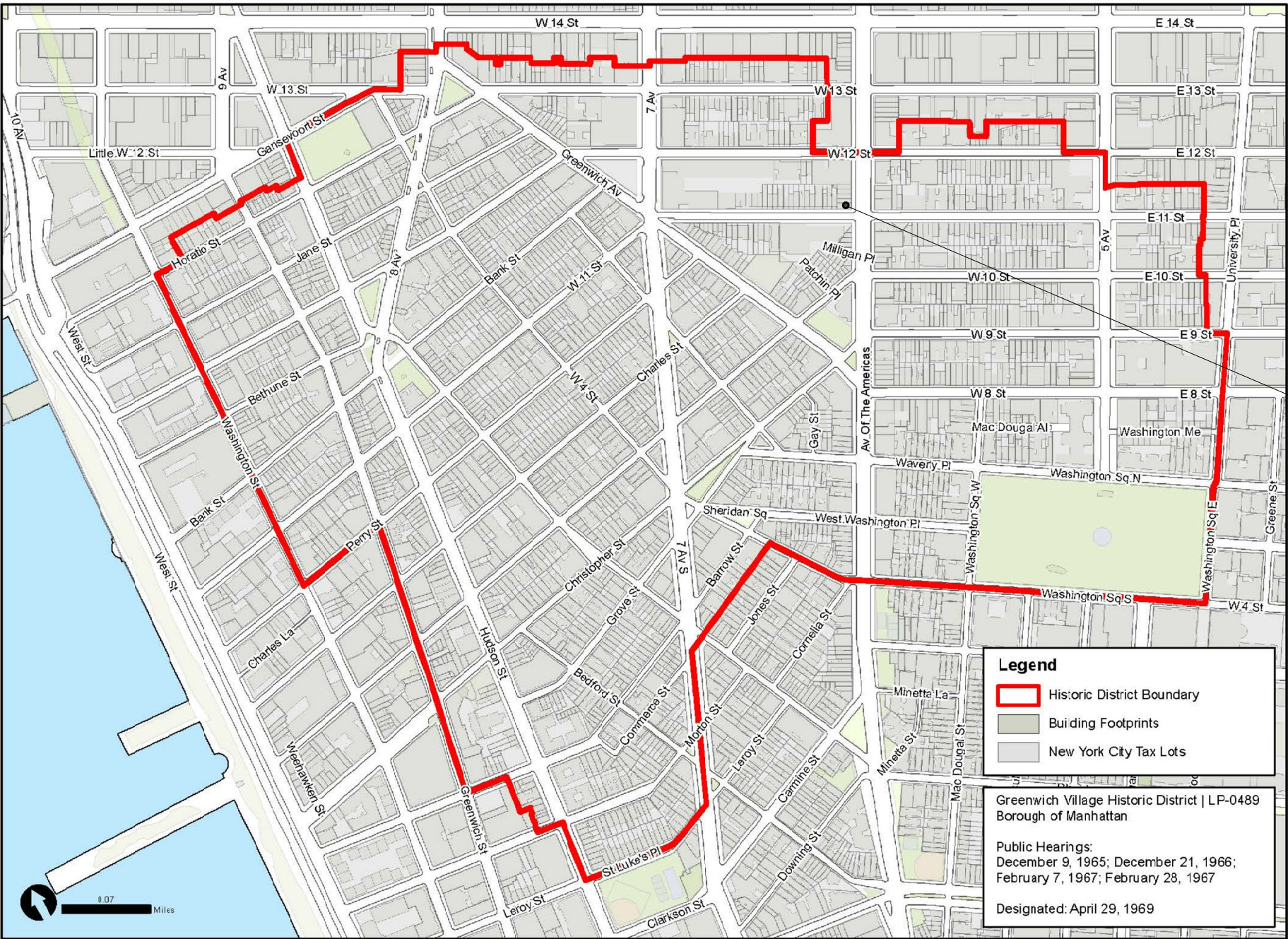
## PROJECT DATA

BOROUGH:	MANHATTAN
BUILDING #:	465
STREET:	6TH. AVENUE
BLOCK:	607
LOT:	47
# OF STORIES:	4
ZONING MAP:	C1-6
MAP:	12C
YEAR BUILT:	1910
EXISTING STORE	
OCCUPANCY GROUP:	COMM. USE GROUP 6



LANDMARK APPLICATION PACKAGE  
LEGALIZE FACADE RENOVATIONS CONSTRUCTED  
WITHOUT LPC PERMITS AND TO INSTALL SIGNAGE  
465 6TH AVE, NEW YORK, NY 10011





AREA OF WORK

Graphic Source: Map PLUTO Edition 18v1, Author: New York City Landmarks Preservation Commission, LCR Date: 2/20/2019

GREENWICH VILLAGE HISTORIC DISTRICT MAP

Sheet No

02

01-10-2025





PHOTO 2013





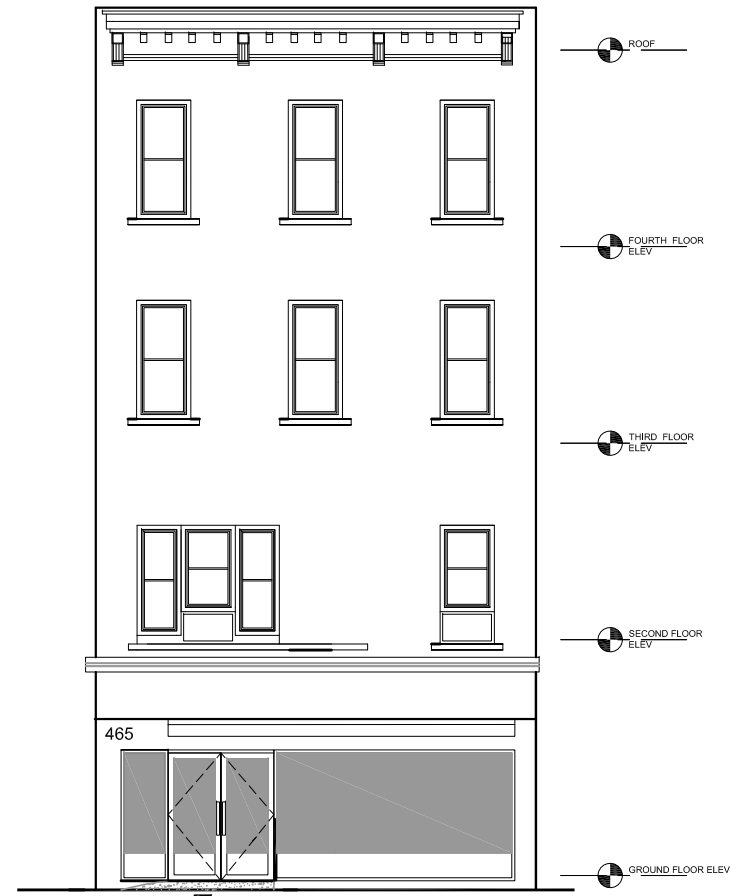
SIMILAR FACADE RENOVATION IN THE AREA - RESTAURANT LA CONTENTA OESTE  
78 W 11th St, New York, NY 10011







1 ELEVATION @ W 11TH STREET  
A - 7 SCALE 1/4" = 1'-0"



2 ELEVATION @ 6TH AVE. (AVE OF THE AMERICAS)  
A - 7 SCALE 1/4" = 1'-0"





HISTORIC PHOTO CIRCA 1910



HISTORIC PHOTO CIRCA 1910



LPC DESIGNATION PHOTO 1963





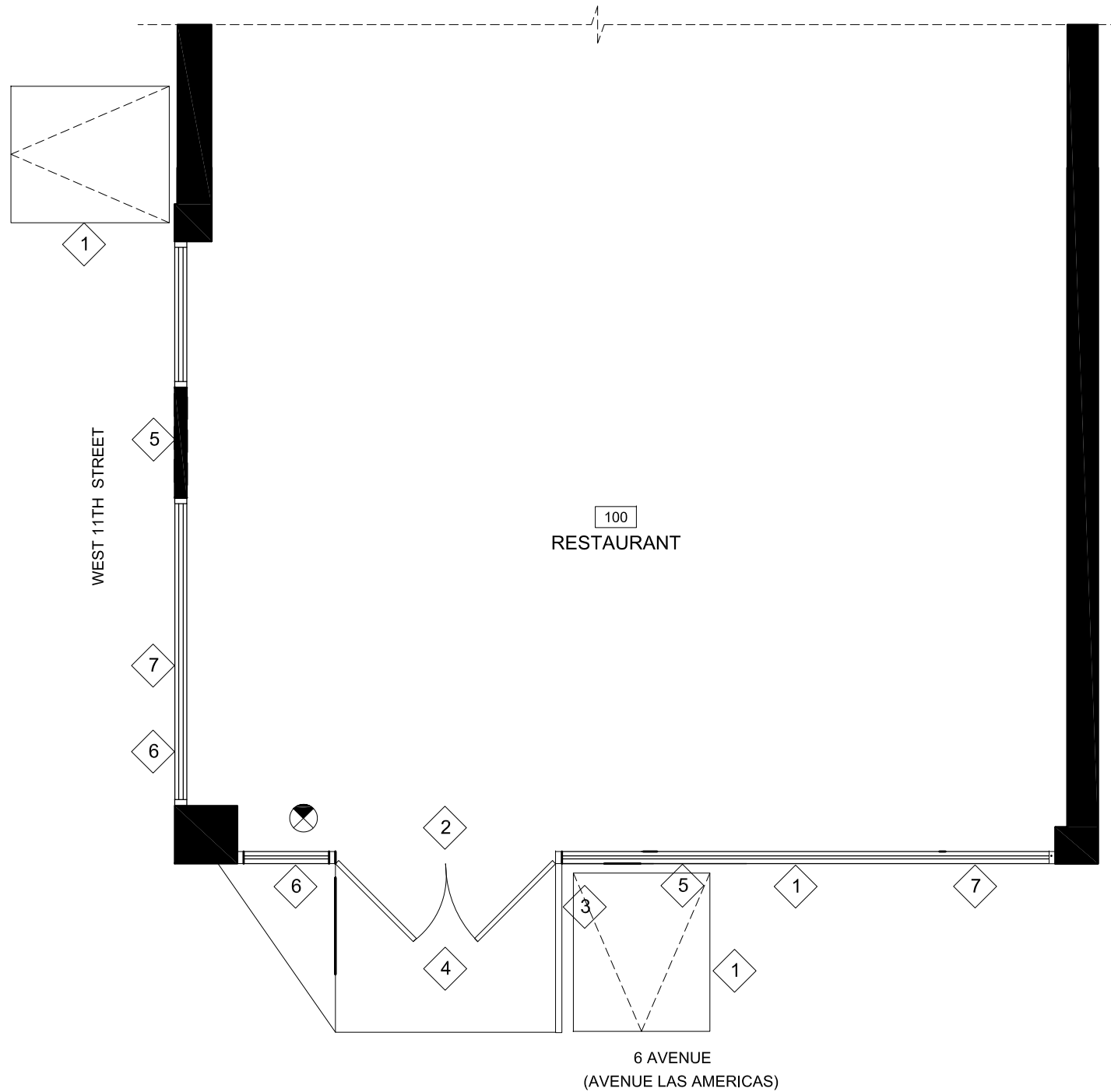
PHOTOS 2022





HISTORIC DISTRICT MAP





**CONSTRUCTION PLAN NOTES:**

1. NEW ALUMINUM FRAME W/ ENLARGED STOREFRONT WINDOW (CLEAR TEMPERED SAFETY GLASS, LOW IRON). ENTRANCE DOOR U:0.30 GLAZING U=0.30 U=0.30 SHGC = 0.254 AIR LEAKAGE =0.06
2. NEW GLASS SWING DOORS (CLEAR TEMPERED SAFETY GLASS, LOW IRON).
3. NEW RAILING.
4. NEW CONCRETE RAMP.
5. EXISTING STUCCO FINISH TO REMAIN THROUGHOUT THE FACADE.
6. NEW SIGN.
7. NEW LED OUTDOOR COVE LIGHTING
8. NEW AWNING.
9. EXISTING HATCH





2 PROPOSED ELEVATION @ 6TH AVE (AVE, THE AMERICAS)  
A - 9 SCALE 1/4" = 1'-0"

#### CONSTRUCTION PLAN NOTES:

1. NEW ALUMINUM FRAME W/ ENLARGED STOREFRONT WINDOW (CLEAR TEMPERED SAFETY GLASS, LOW IRON). ENTRANCE DOOR U:0.30 GLAZING U=0.30 U=0.30 SHGC = 0.254 AIR LEAKAGE =0.06
2. NEW GLASS SWING DOORS (CLEAR TEMPERED SAFETY GLASS, LOW IRON).
3. NEW RAILING.
4. NEW CONCRETE RAMP TO BE REPAIRED.
5. EXISTING STUCCO FINISH TO REMAIN THROUGHOUT THE FACADE.
6. NEW NON ILLUMINATED WALL SIGN.
7. NEW OUTDOOR LED OUTDOOR COVE LIGHTING 3000K SEE SPEC.
8. NEW ACCESSORY RETRACTABLE AWNING 6'.
9. NEW CORNICE INSPIRED ON HISTORIC FACADE "SALLY FOOD SHOPS". TREATED HARDWOOD.
10. NEW FILM EMULATING BULKHEAD INSPIRED ON HISTORIC FACADE "SALLY FOOD SHOPS".



3 PROPOSED ELEVATION @ W 11TH STREET  
A - 9 SCALE 1/4" = 1'-0"



Outdoor Cove Lighting  
CROWN NARROW



Outdoor Cove Lighting  
CROWN NARROW





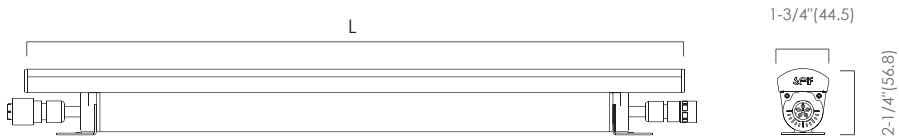
Outdoor Cove Lighting  
CROWN NARROW



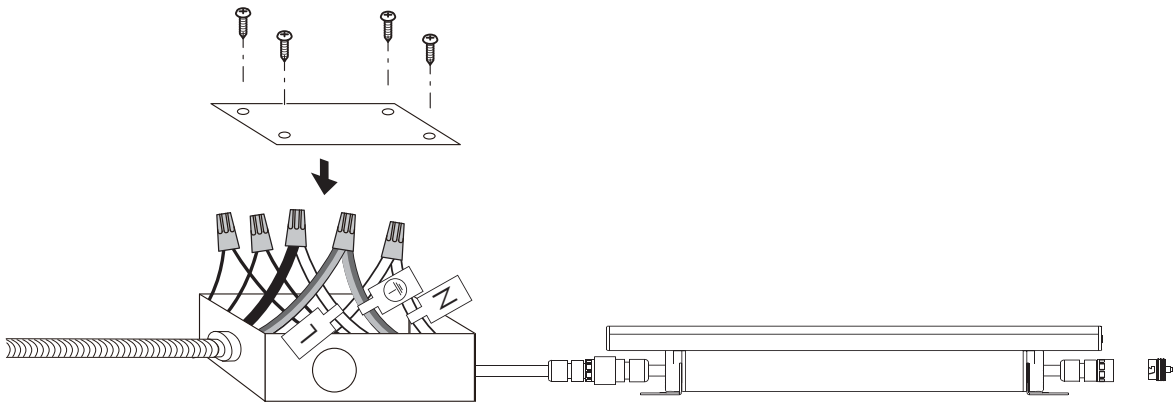
- Quick connection
- Narrow beam angle
- Dimmable, 1-10V dimming to 10%-100%
- Linkable, max.linkable length: 72' @120VAC, 156' @277VAC
- IP rating: IP66 (for wet locations)
- Lockable, precision aiming adjustment: ±82.5°vertical rotation
- Lifetime: 50,000hrs (ta=95°F, 35°C)
- Ta: -13°F~122°F (-25°C~50°C)
- Material: Aluminum alloy
- 10W/ft, 1000lm/ft



Dimensions: (inches/mm)



Wiring Diagram

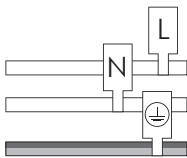


AC connection :

Black: " L "

White: " N "

Yellow/green: " ⊕ "



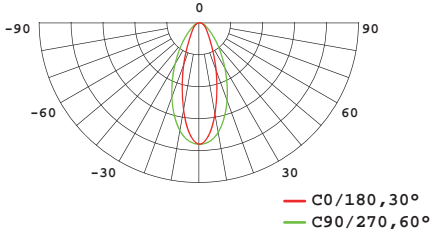
Dimming connection :

Violet: " + " ———

Gray: " - " ———

Outdoor Cove Lighting  
CROWN NARROW

Specialized Candlepower Distribution



How to order using our catalog numbers:  
Example: CROWN NARROW-123060K40SS

Series	Length	Color Temp	Beam Angle	Finish	Installation
CROWN NARROW	12 - 11.8"(300mm) 47 - 47"(1200mm) 70 - 70"(1778mm)	30K - 3000K 40K - 4000K	3060 - 30°×60°	S - Silver	S - Screw Mounting

Catalog No.	Model	Description				
		Rated Input	Ra	Wattage	Luminous Flux (TYP@4000K)	Included
CROWN NARROW-1230K3060SS	CROWN NARROW-L12-277V	120-277VAC	85	10W	1000lm	1 pc LED fixture 2pcs Screws 1pc End cap
CROWN NARROW-1240K3060SS						
CROWN NARROW-4730K3060SS	CROWN NARROW-L45-277V	120-277VAC	85	40W	4000 lm	
CROWN NARROW-4740K3060SS						
CROWN NARROW-7030K3060SS	CROWN NARROW-L72-277V	120-277VAC	85	60W	6000 lm	
CROWN NARROW-7040K3060SS						

How to choose your driver & cables:

Catalog No.	Description	Photo
IC-CROWN-59	Input cable 59"	

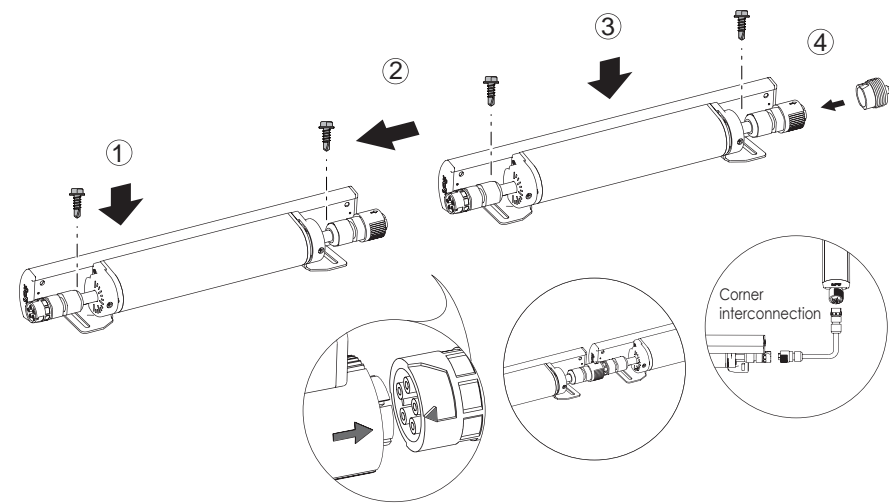
Optional:

Catalog No.	Description	Photo
SC-CROWN-12	Soft connector 12"	
TK-CROWN-79	Track 79", including 3pcs screws	

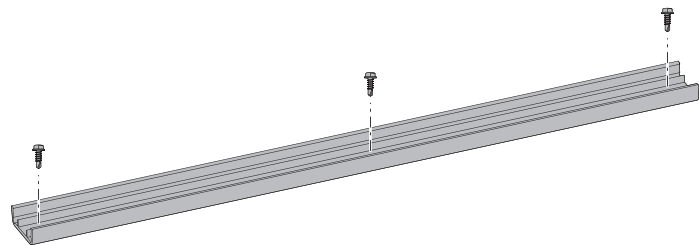


Outdoor Cove Lighting  
CROWN NARROW

Installation      Screws installation



Track installation      1



2

