



Existing condition at 5th floor (top) windows, cutting into cornice and with residual label-molding at midpoint of window, that were raised in the 1927 renovation/conversion to tenements

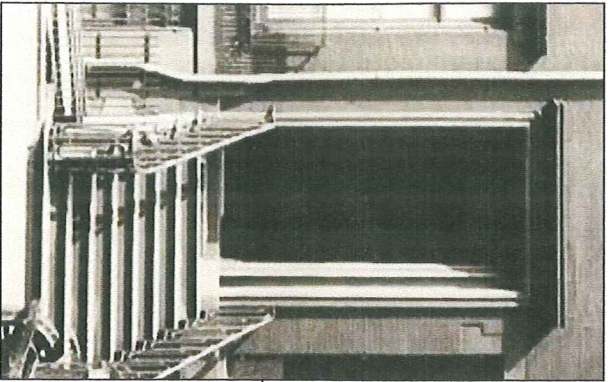
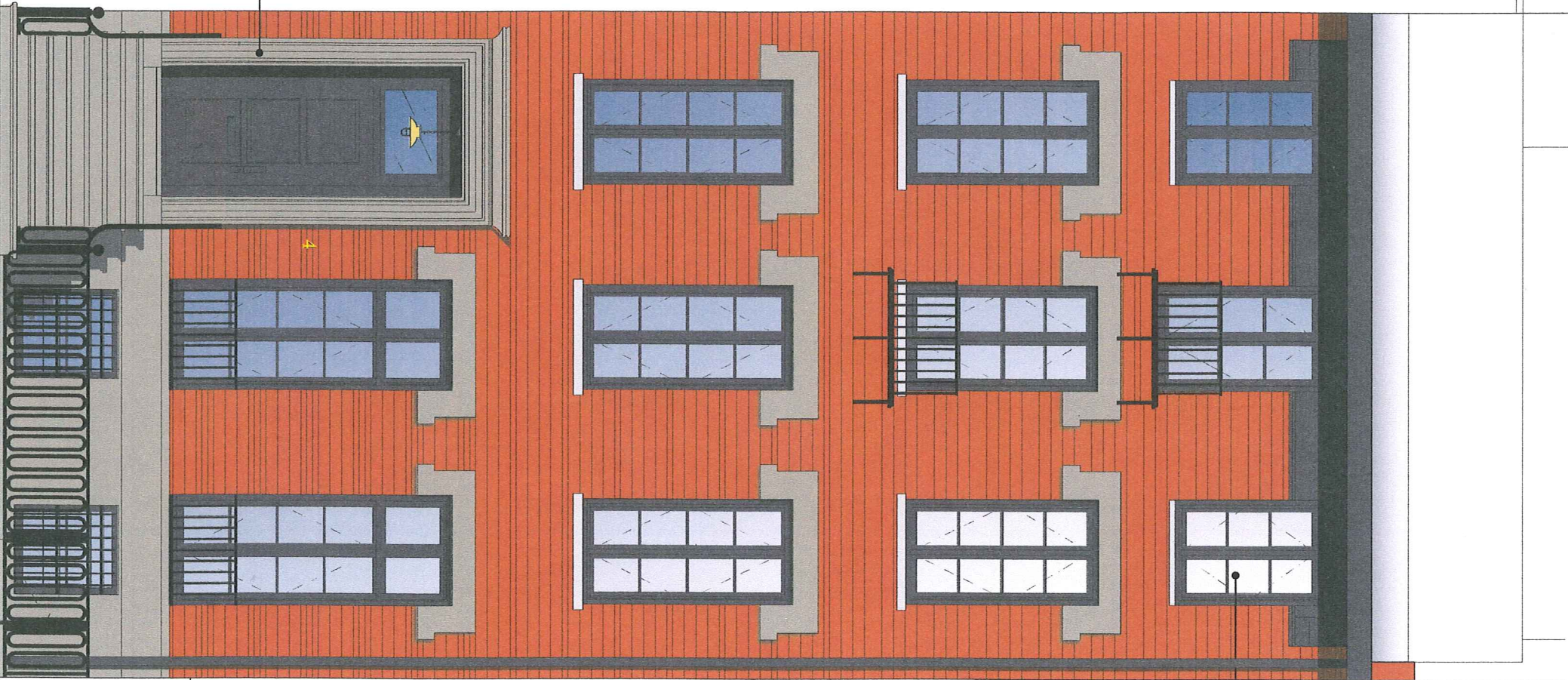


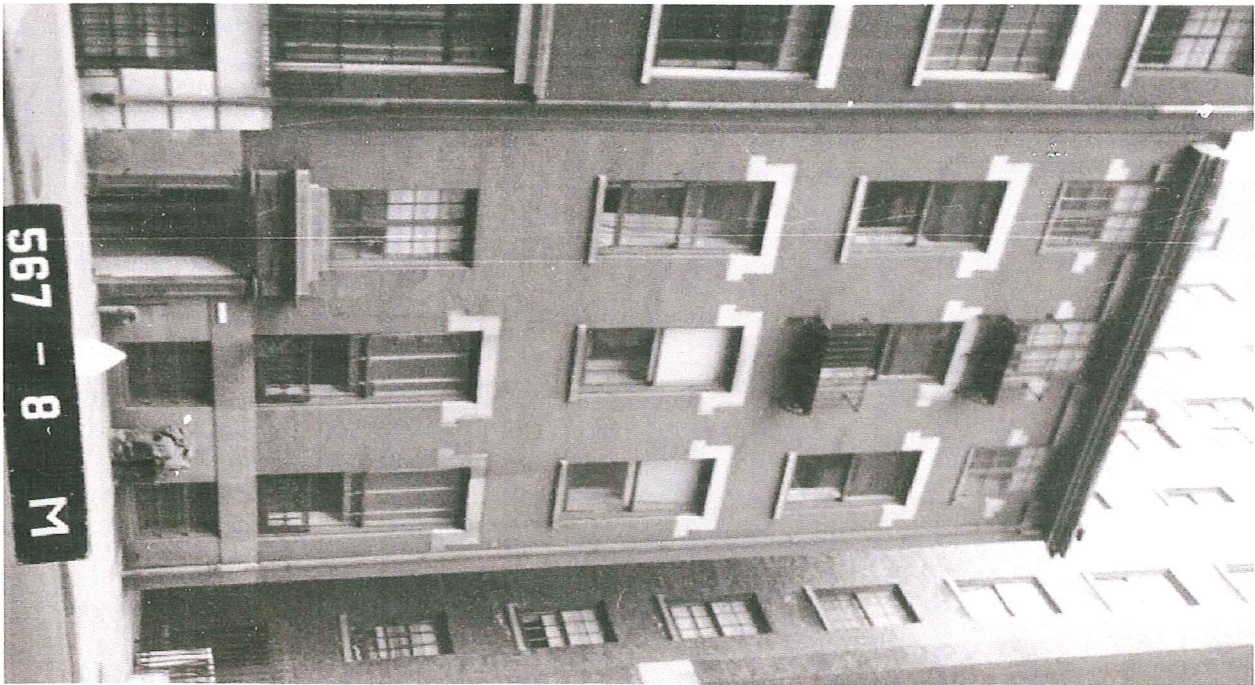
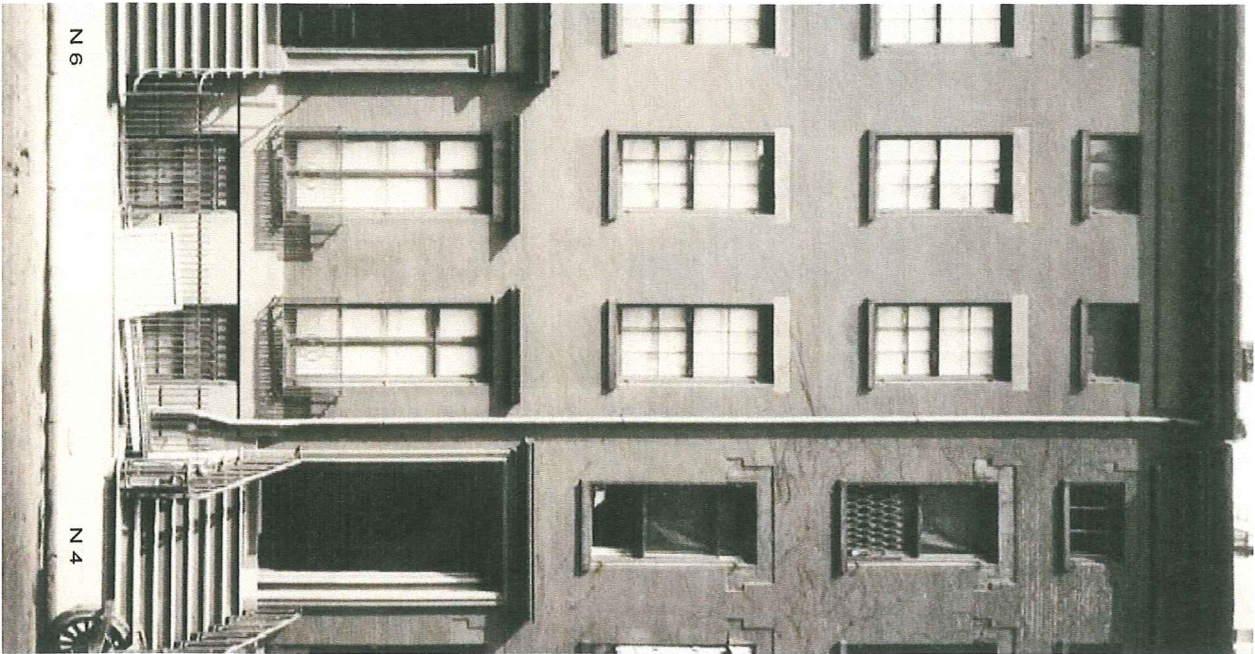
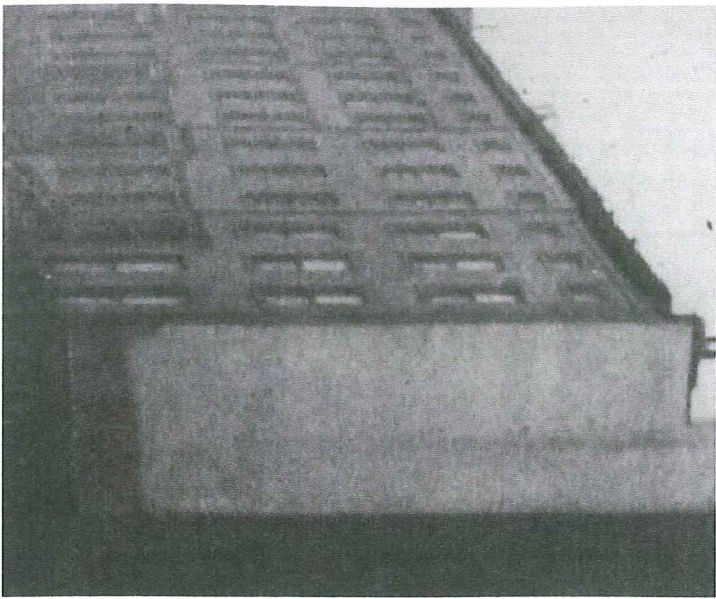
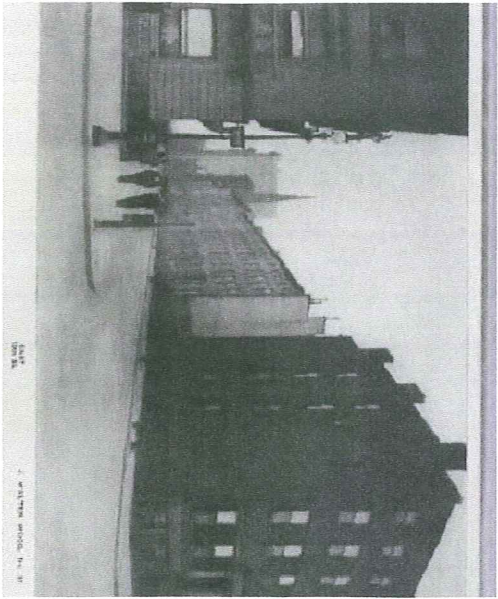
Image of original Neo-Gothic portico and stoop to be replicated



DATE: 03/01/11	PROJECT: NYC LPC APPROVALS	Copyright © 2011 ARCHITECTURE IN FORMATION PC All ideas, designs, arrangements and plans indicated or represented by this drawing are owned by and the property of Architecture in Formation and were created, evolved, and developed for use on, and in connection with the specified project. None of such ideas, design arrangements or plans shall be used or disclosed to any person, firm or corporation for any purpose whatsoever without the written permission of Architecture in Formation.
SCALE: 3/8"=1'-0"	1 CB2/LPC APPROVALS 3/7/11	
DRAWN: RK		
SHEET: LPC-01	Proposed E 10th Street North Elevation (Rendered)	
REVISIONS:		



01 4 East 10th Street: Existing Condition



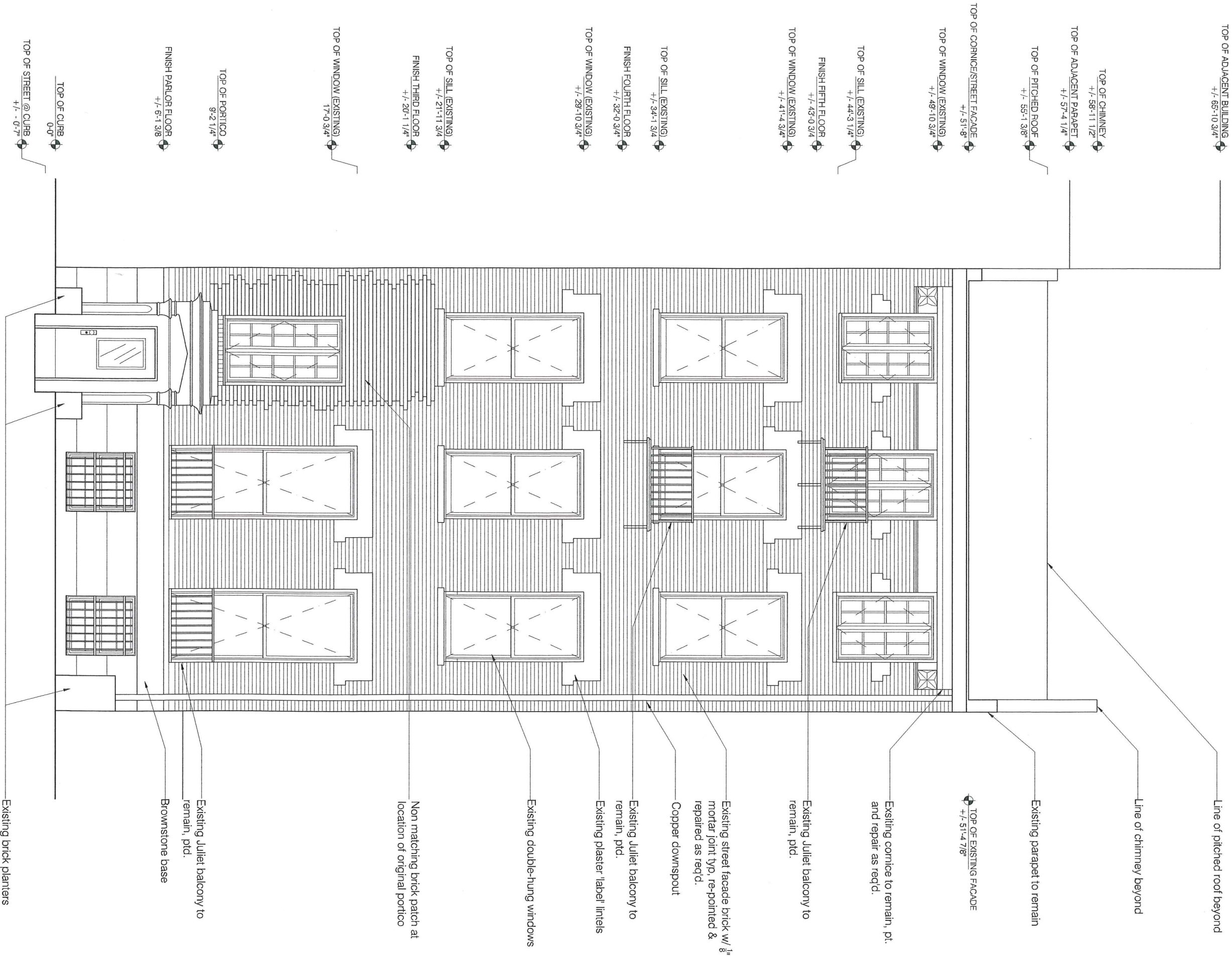
02 4 East 10th Street
1911 Photo

03 4 East 10th Street
Pre-1927 Photo

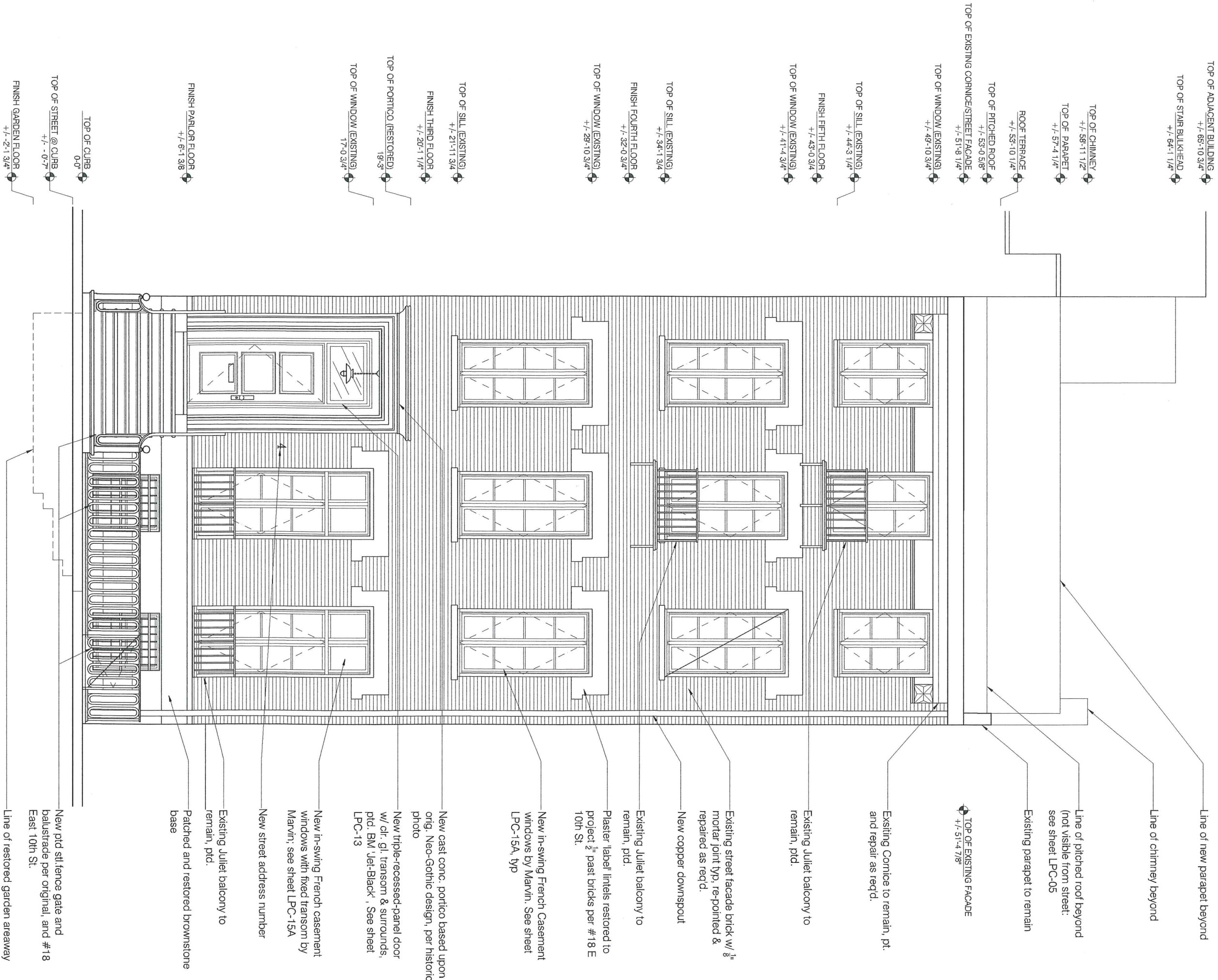
04 4 East 10th Street
1940 Tax Photo

DATE: 03/01/11	PROJECT:	NYC LPC APPROVALS 1 CB2/LPC APPROVALS 3/7/11	Copyright © 2011 ARCHITECTURE IN FORMATION PC All ideas, designs, arrangements and plans indicated or represented by this drawing are owned by and the property of Architecture in Formation and were created, evolved, and developed for use on, and connection with the specified project. None of such ideas, design arrangements or plans shall be used or disclosed to any person, firm or corporation for any purpose whatsoever without the written permission of Architecture in Formation.
SCALE: noted	4 EAST 10th Street New York, NY 10003		
DRAWN: RK	Current and Historical Photos of 4 East 10th Street Facade		
LPC-02			
SHEET:	DRAWING		
		REVISIONS:	

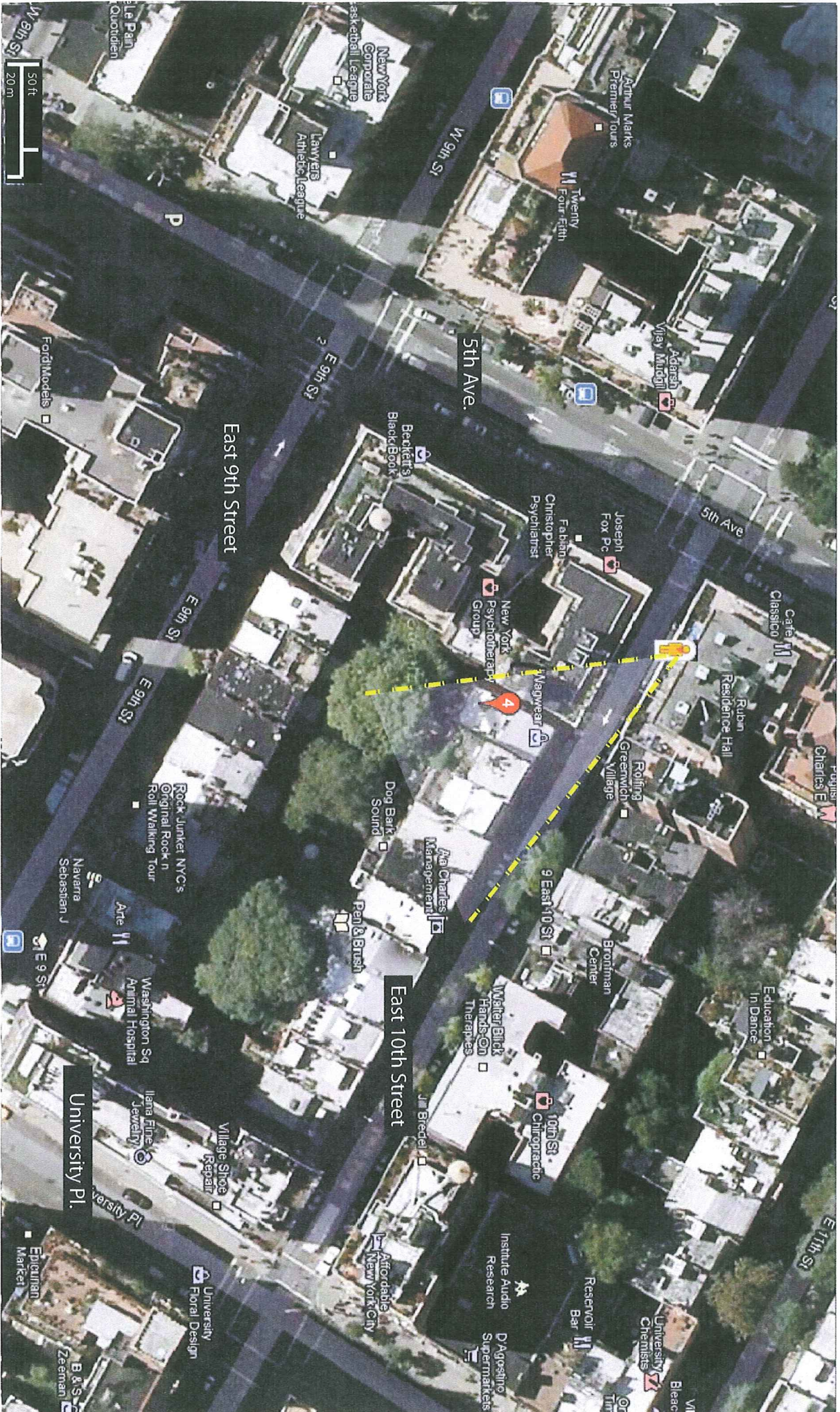
ARCHITECTURE
IN FORMATION
Architecture in Formation PC
Matthew Bremner AIA, Principal
526 West 26th St., Ste. 422, NYC 10001
T. 212 714 1006 F. 212 714 9026
www.aifny.com



DATE: 03/01/11	PROJECT: NYC LPC APPROVALS	Copyright © 2011 ARCHITECTURE IN FORMATION PC All ideas, designs, arrangements and plans indicated or represented by this drawing are owned by and the property of Architecture in Formation and were created, evolved, and developed for use on, and connection with the specified project. None of such ideas, design arrangements or plans shall be used or disclosed to any person, firm or corporation for any purpose whatsoever without the written permission of Architecture in Formation.
SCALE: 3/8"-1'-0"	4 EAST 10th Street New York, NY 10003	
DRAWN: RIK	1 CB2/LPC APPROVALS 3/7/11	
SHEET: LPC-03	4 East 10th Existing Elevation (North)	
DRAWING	REVISIONS:	



DATE: 03/01/11	PROJECT: 4 EAST 10th Street New York, NY 10003	NYC LPC APPROVALS 1 CB2/LPC APPROVALS 3/7/11	Copyright © 2011 ARCHITECTURE IN FORMATION PC All ideas, designs, arrangements and plans indicated or represented by this drawing are owned by and the property of Architecture in Formation and were created, evolved, and developed for use on, and connection with the specified project. None of such ideas, design arrangements or plans shall be used or disclosed to any person, firm or corporation for any purpose whatsoever without the written permission of Architecture in Formation.
SCALE: 3/8"=1'-0"			
DRAWN: RK			
SHEET: LPC-04	Proposed 4 East 10th Street North Elevation	REVISIONS:	

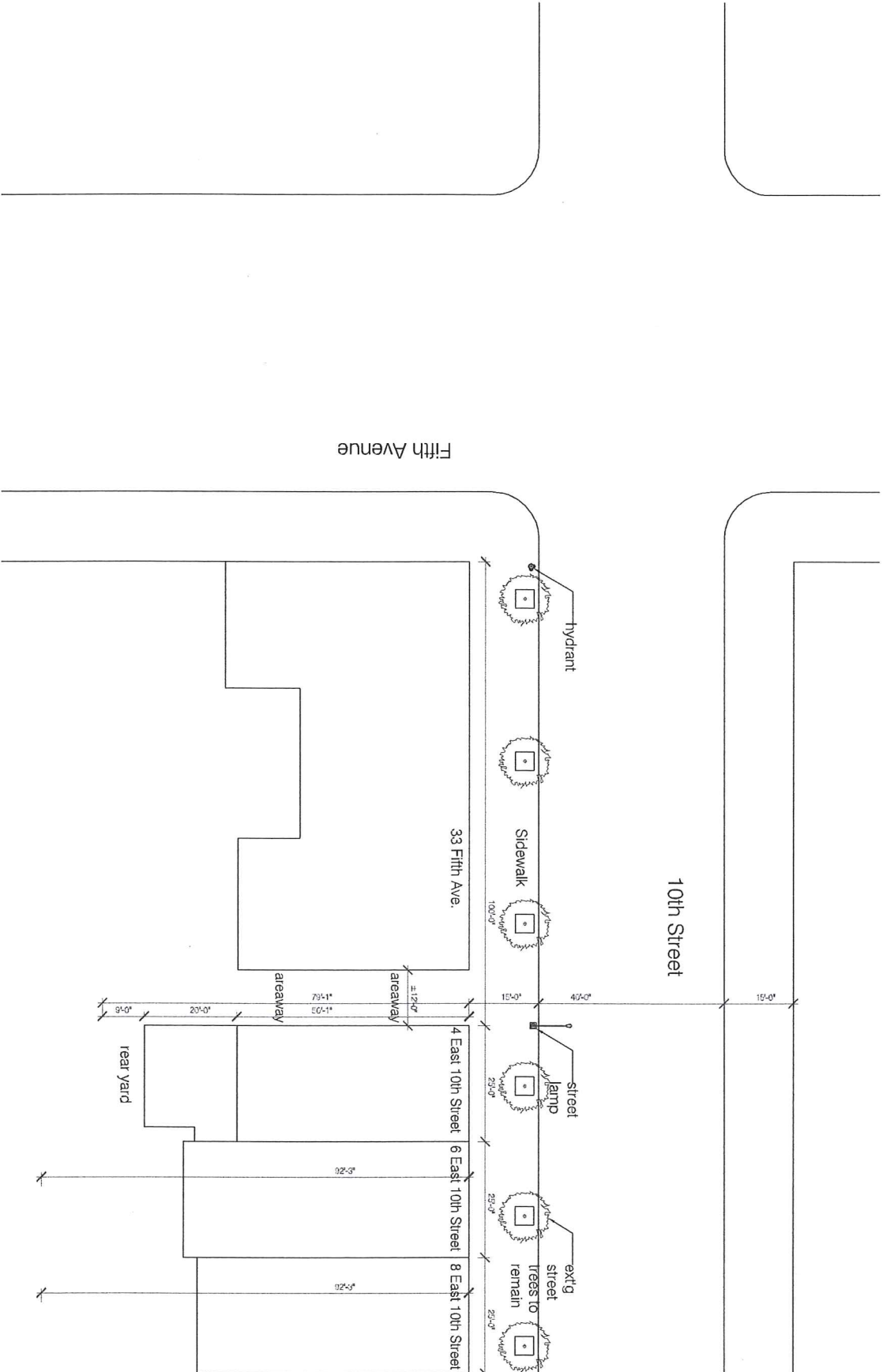


01 Site Satellite View



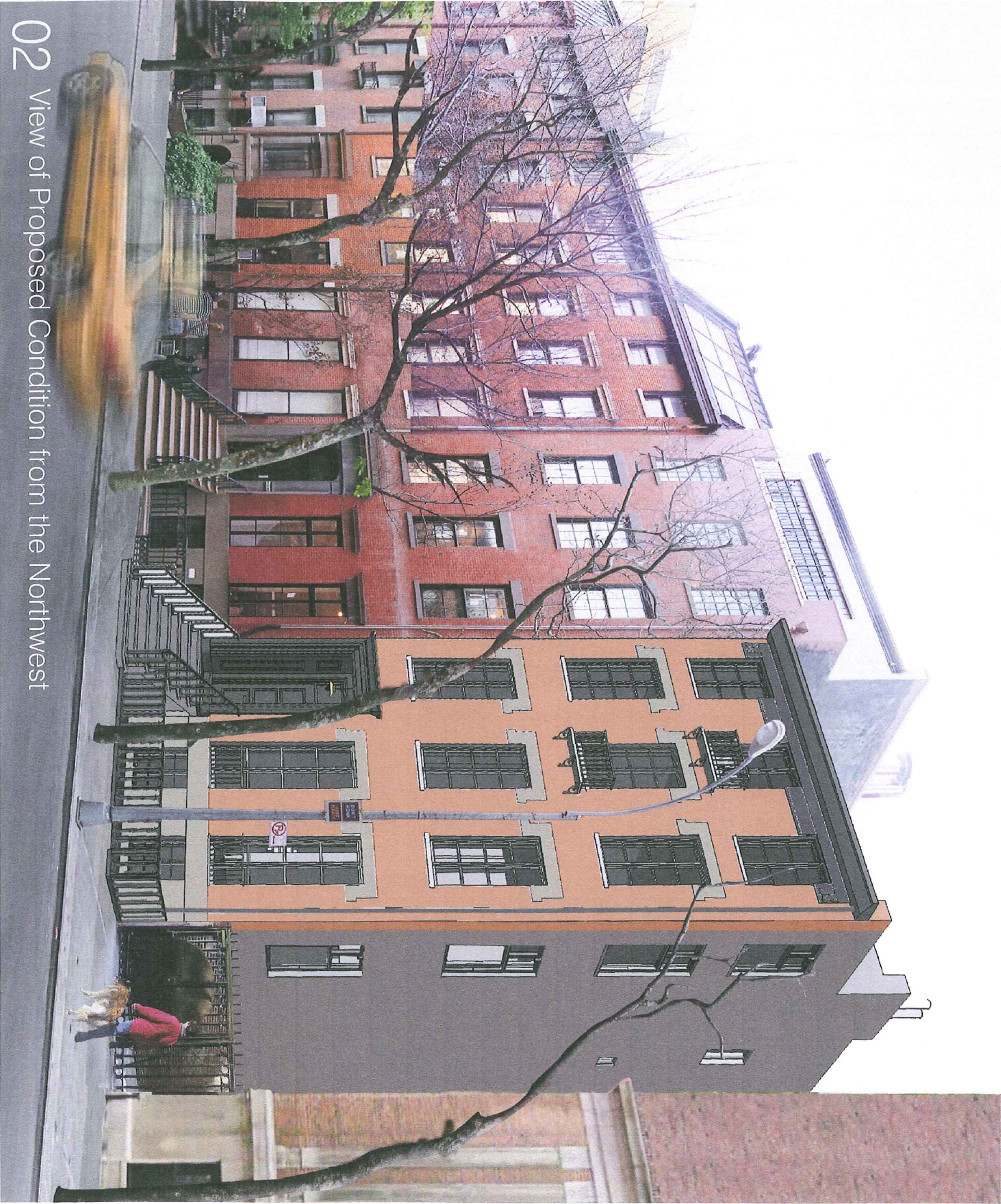
02 View of Existing Condition from the Northwest

DATE: 03/01/11	PROJECT:	NYC LPC APPROVALS	Copyright © 2011 ARCHITECTURE IN FORMATION PC
SCALE: noted	4 EAST 10th Street	1 CB2/LPC APPROVALS 3/7/11	All ideas, designs, arrangements and plans indicated or represented by this drawing are owned by and the property of Architecture in Formation and were created, evolved, and developed for use on, and connection with the specified project. None of such ideas, design arrangements or plans shall be used or disclosed to any person, firm or corporation for any purpose whatsoever without the written permission of Architecture in Formation.
DRAWN: RK	New York, NY 10003		
LPC-05	View of Existing Condition from the Northwest		
SHEET:	DRAWING	REVISIONS:	



01 Site Plan

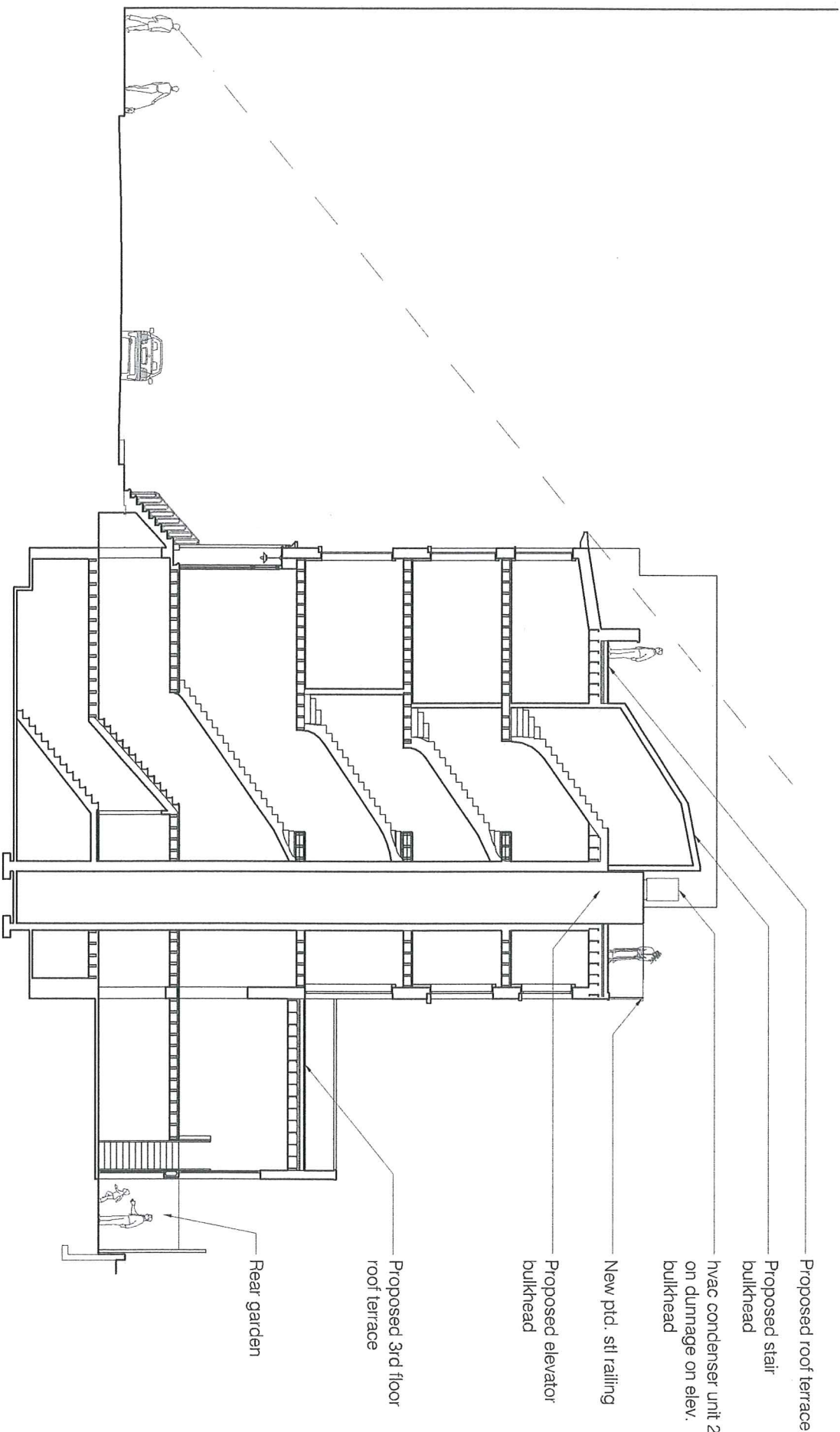
1/16"=1'-0"



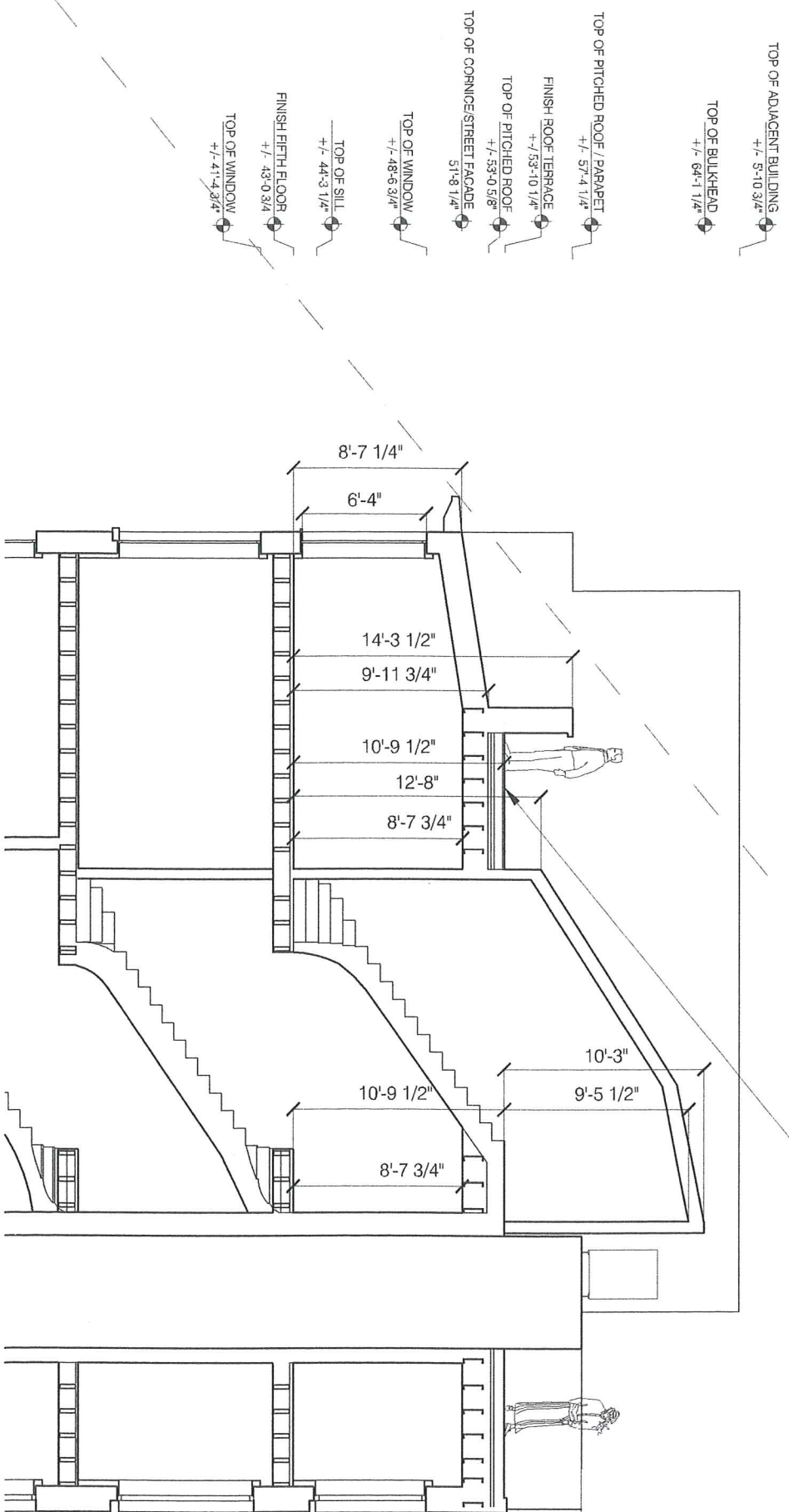
DATE: 03/01/11	PROJECT: 4 EAST 10th Street New York, NY 10003	NYC LPC APPROVALS: 1 CB2/LPC APPROVALS 3/7/11
SCALE: noted		
DRAWN: RK		
SHEET: LPC-06	View of Proposed Restoration and Alteration from the Northwest	REVISIONS:

ARCHITECTURE
IN FORMATION

Architecture in Formation PC
Matthew Bremer AIA, Principal
526 West 26th St., Ste. 422, NYC 10001
T. 212 714 1006 F. 212 714 9026
www.aifny.com

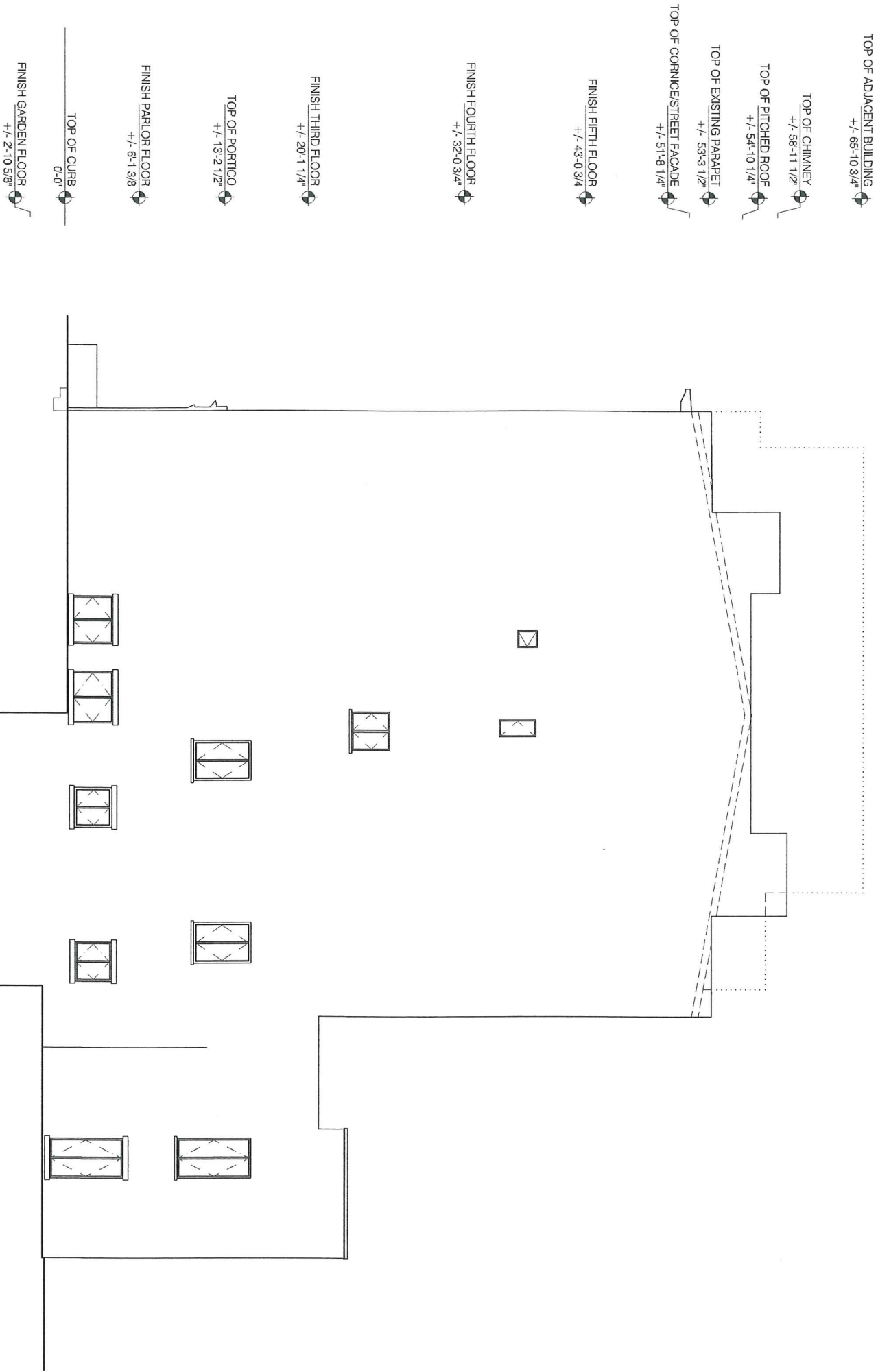


01 Proposed Longitudinal Building Section (East) with Street Sight-line Requirements 1/8"=1'-0"



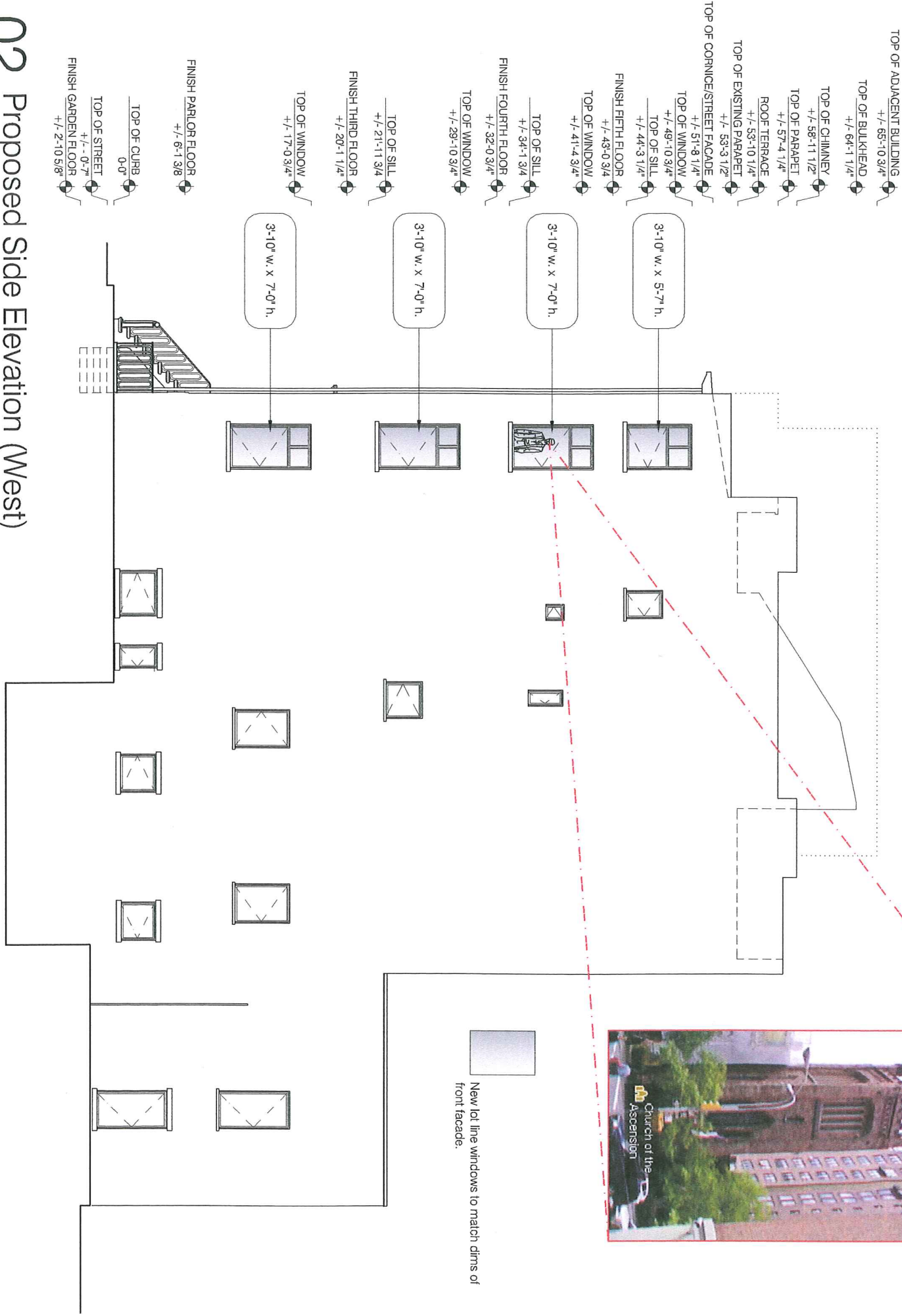
02 Proposed Longitudinal Section (East) (Detail with vertical dimensions) 1/4"=1'-0"

DATE: 03/01/11	PROJECT: 4 EAST 10th Street New York, NY 10003	NYC LPC APPROVALS 1 CB2/LPC APPROVALS 3/7/11	Copyright © 2011 ARCHITECTURE IN FORMATION PC All ideas, designs, arrangements and plans indicated or represented by this drawing are owned by and the property of Architecture in Formation and were created, evolved, and developed for use on, and connection with the specified project. None of such ideas, design arrangements or plans shall be used or disclosed to any person, firm or corporation for any purpose whatsoever without the written permission of Architecture in Formation.
SCALE: noted			
DRAWN: RK			
SHEET: LPC-07	Proposed Building Section with Street Sight-line Requirements	REVISIONS:	



01 Existing Side Elevation (West)

3/16"=1'-0"



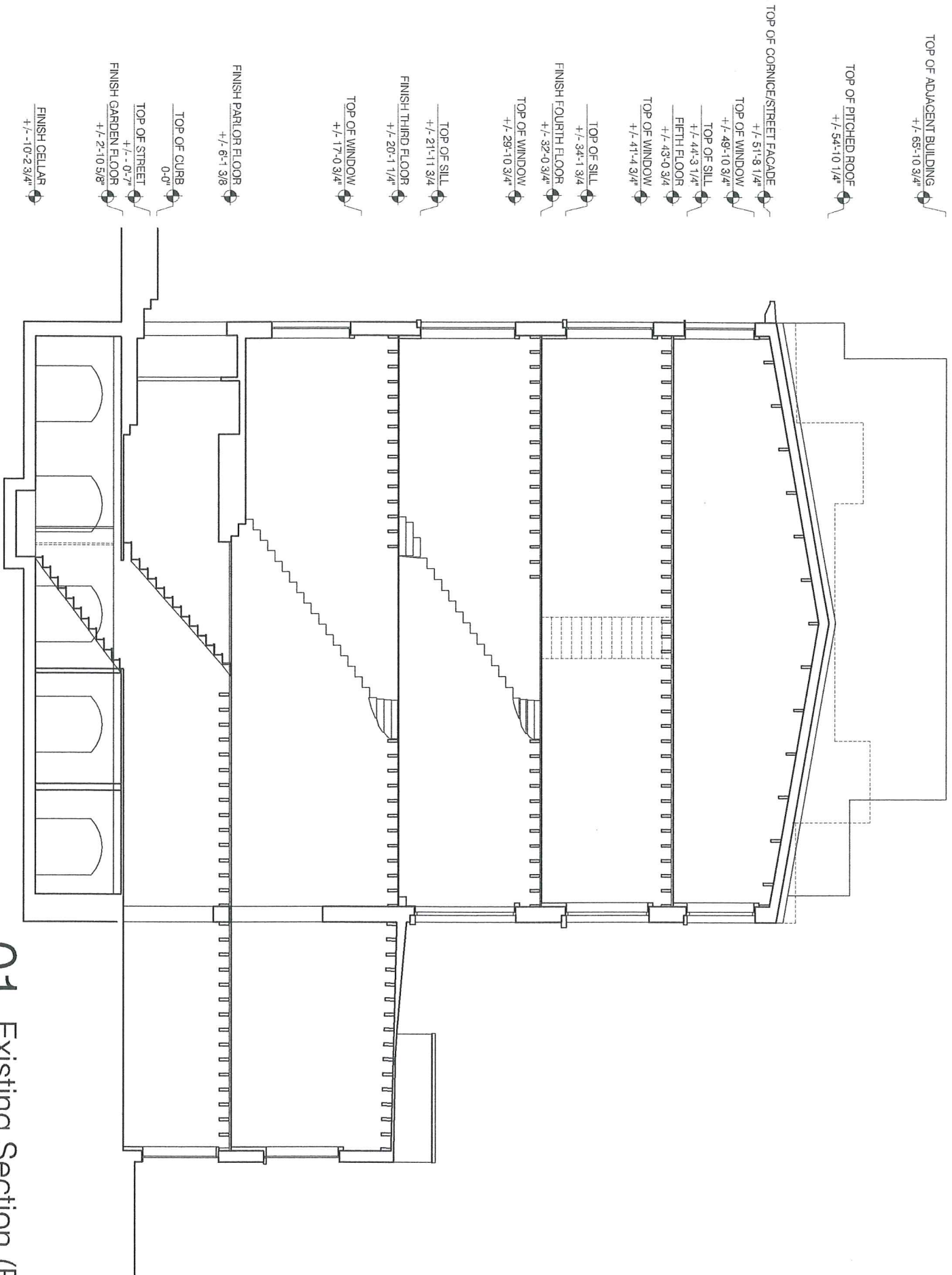
02 Proposed Side Elevation (West)

3/16"=1'-0"

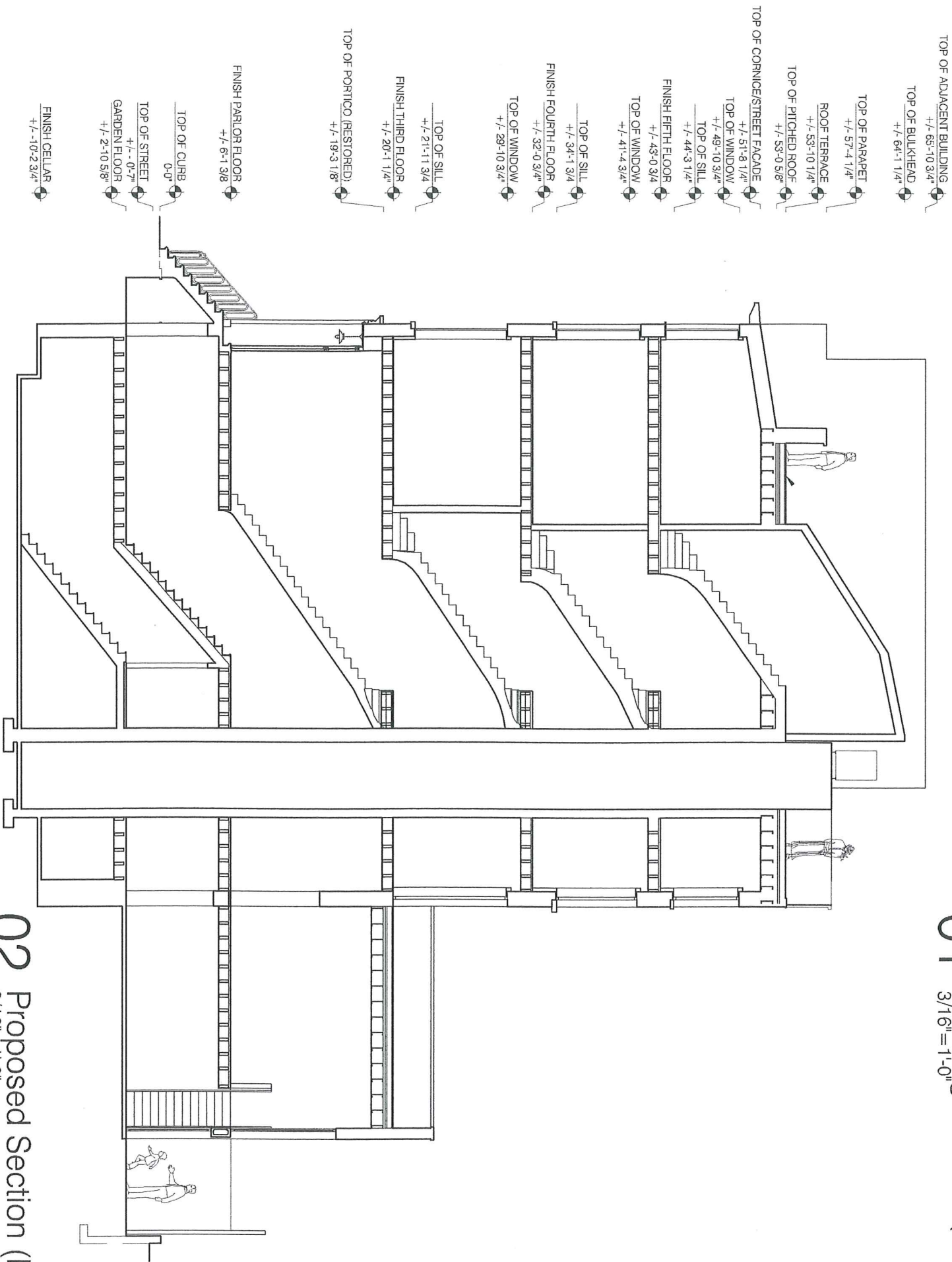
DATE: 01/26/11	PROJECT: 4 EAST 10th Street New York, NY 10003	NYC LPC APPROVALS 1 CB2/LPC APPROVALS 3/7/11	Copyright © 2011 ARCHITECTURE IN FORMATION PC
SCALE: noted			All ideas, designs, arrangements and plans indicated or represented by this drawing are owned by and the property of Architecture in Formation and were created, evolved, and developed for use on, and connection with the specified project. None of such ideas, design arrangements or plans shall be used or disclosed to any person, firm or corporation for any purpose whatsoever without the written permission of Architecture in Formation.
DRAWN: RIK			
SHEET: LPC-08	Existing and Proposed Elevations	REVISIONS:	

ARCHITECTURE IN FORMATION

Architecture in Formation PC
Matthew Bremner AIA, Principal
526 West 26th St., Ste. 422, NYC 10001
T. 212 714 1006 F. 212 714 9026
www.aifny.com



01 Existing Section (East)
3/16"=1'-0"



02 Proposed Section (East)
3/16"=1'-0"

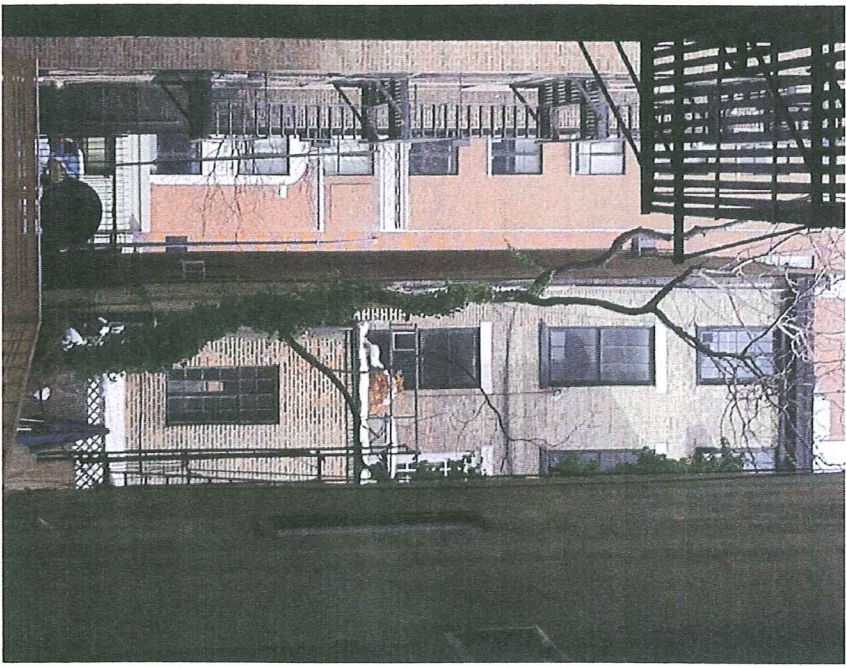
DATE: 03/01/11	PROJECT: 4 EAST 10th Street New York, NY 10003	NYC LPC APPROVALS 1 CB2/LPC APPROVALS 3/7/11	Copyright © 2011 ARCHITECTURE IN FORMATION PC All ideas, designs, arrangements and plans indicated or represented by this drawing are owned by and the property of Architecture in Formation and were created, evolved, and developed for use on, and connection with the specified project. None of such ideas, design arrangements or plans shall be used or disclosed to any person, firm or corporation for any purpose whatsoever without the written permission of Architecture in Formation.
SCALE: noted			
DRAWN: RK			
SHEET: LPC-09	Existing and Proposed Sections	REVISIONS:	



01 Rear facade from roof of rear addition



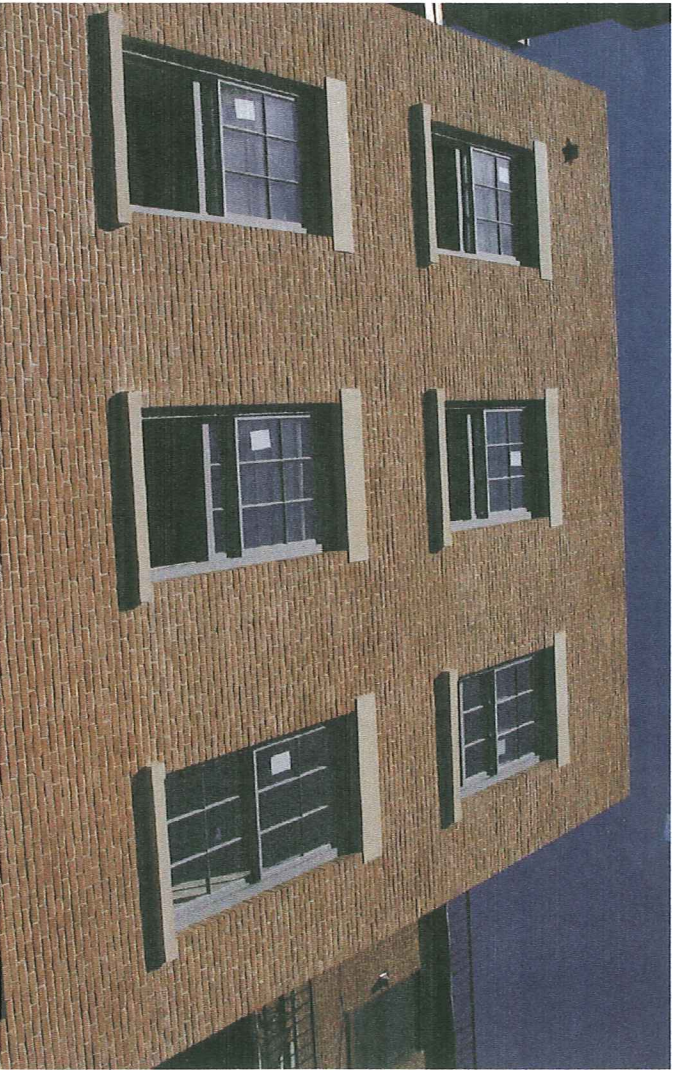
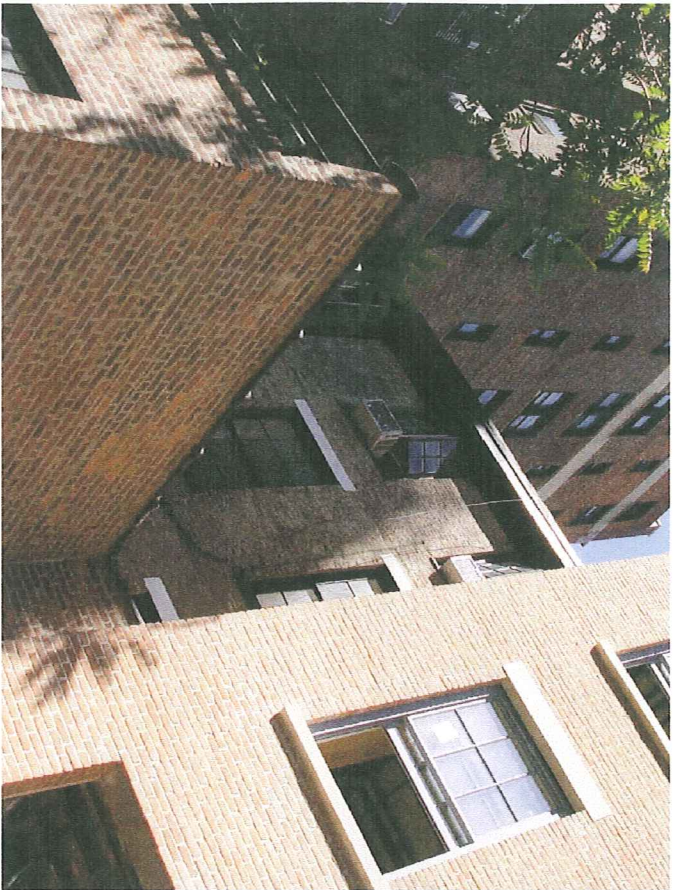
02 Existing rear addition roof



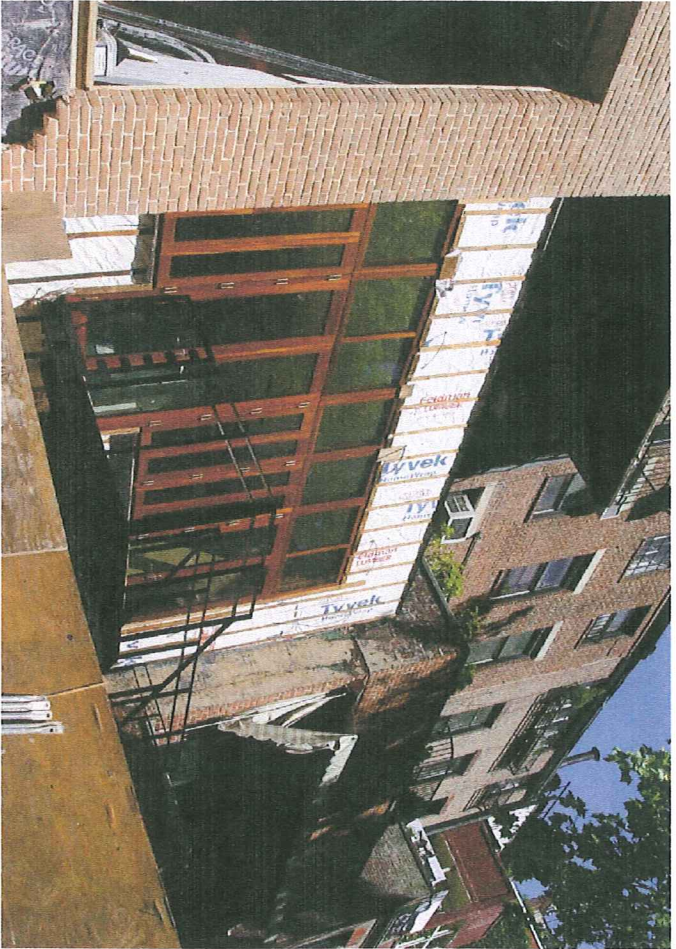
03 4 East 10th rear facade and garden
View from 6 East 10th Street

04 4 East 10th rear facade
view from 9th Street gate

DATE: 03/01/11	PROJECT: 4 EAST 10th Street New York, NY 10003	NYC LPC APPROVALS 1 CB2/LPC APPROVALS 3/7/11	Copyright © 2011 ARCHITECTURE IN FORMATION PC
SCALE: noted			All ideas, designs, arrangements and plans indicated or represented by this drawing are owned by and the property of Architecture in Formation and were created, evolved, and developed for use on, and connection with the specified project. None of such ideas, design arrangements or plans shall be used or disclosed to any person, firm or corporation for any purpose whatsoever without the written permission of Architecture in Formation.
DRAWN: RK	Images of Existing Condition of the Rear Facade		
SHEET:	DRAWING	REVISIONS:	



01 Views of 6 East 10th Street
Adjacent



02 View of adjacent rear facades
#6; #10 | #12; #14; #16 | #12; #14; #16; #18

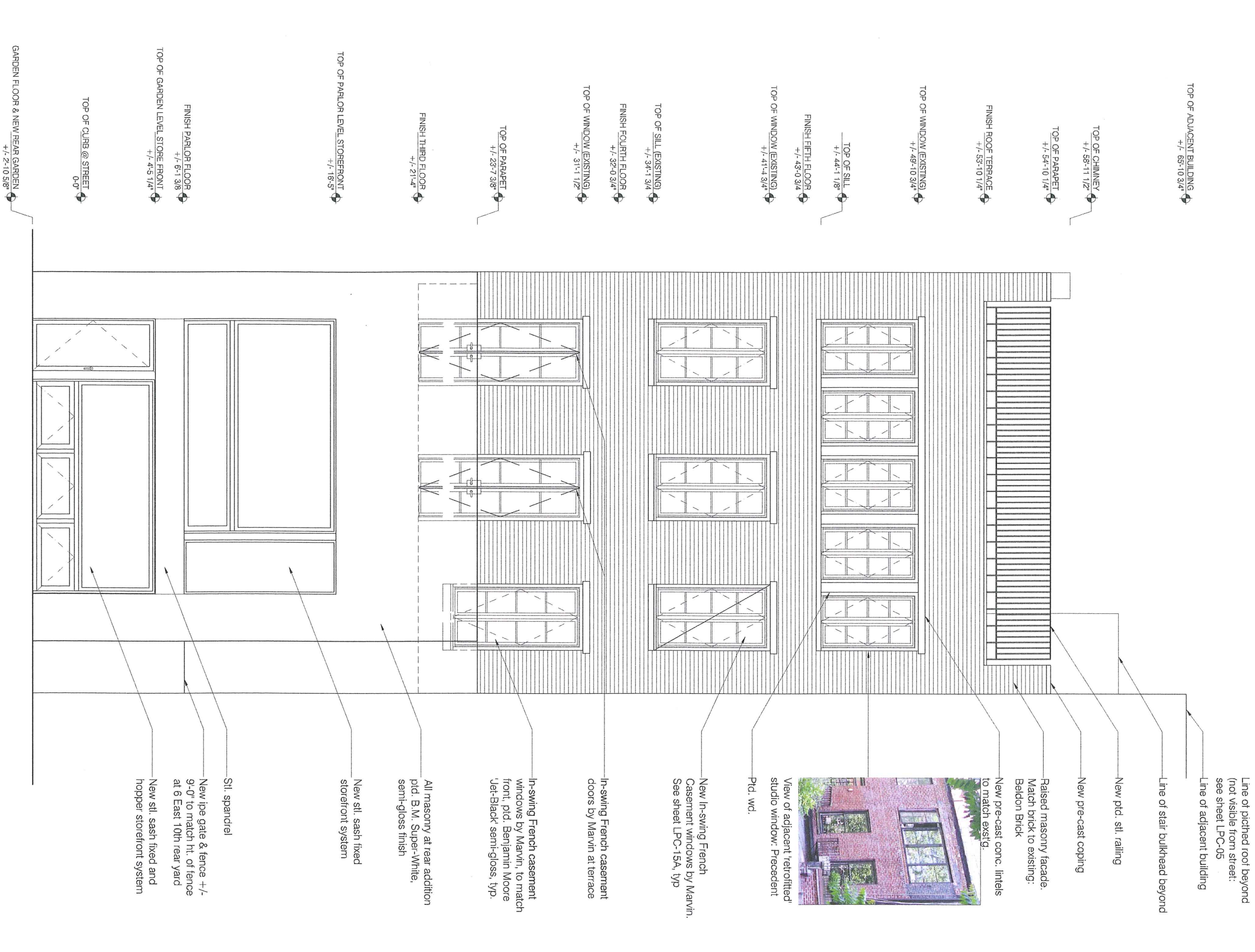


03 Facades of townhouses along North side of E. 9th Street
Existing condition

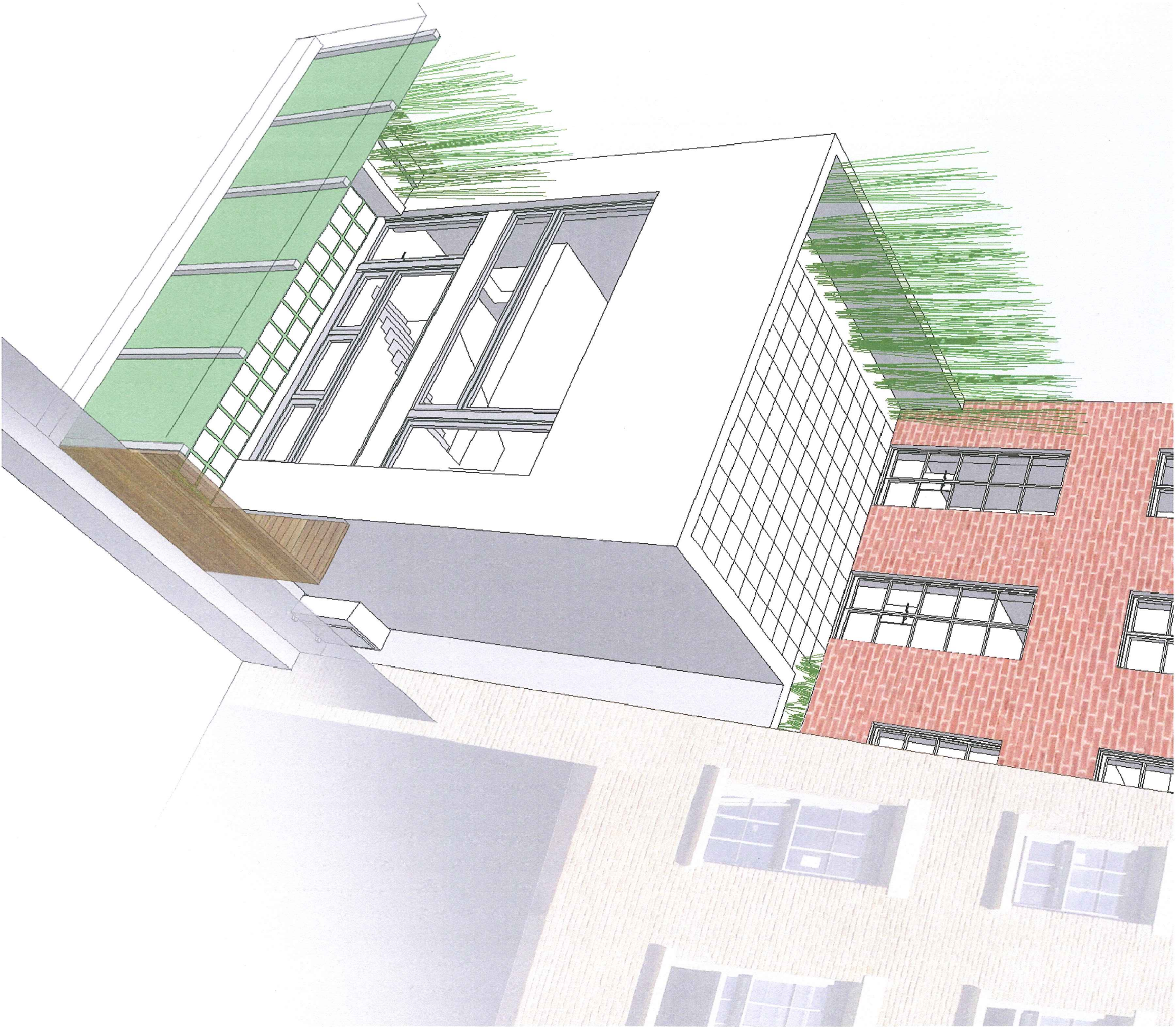
DATE: 03/01/11	PROJECT:	NYC LPC APPROVALS 1 CB2/LPC APPROVALS 3/7/11	Copyright © 2011 ARCHITECTURE IN FORMATION PC All ideas, designs, arrangements and plans indicated or represented by this drawing are owned by and the property of Architecture in Formation and were created, evolved, and developed for use on, and connection with the specified project. None of such ideas, design arrangements or plans shall be used or disclosed to any person, firm or corporation for any purpose whatsoever without the written permission of Architecture in Formation.
SCALE: noted	4 EAST 10th Street New York, NY 10003		
DRAWN: RIK	Surrounding Rears to 4 East 10th		
SHEET:	DRAWING:		



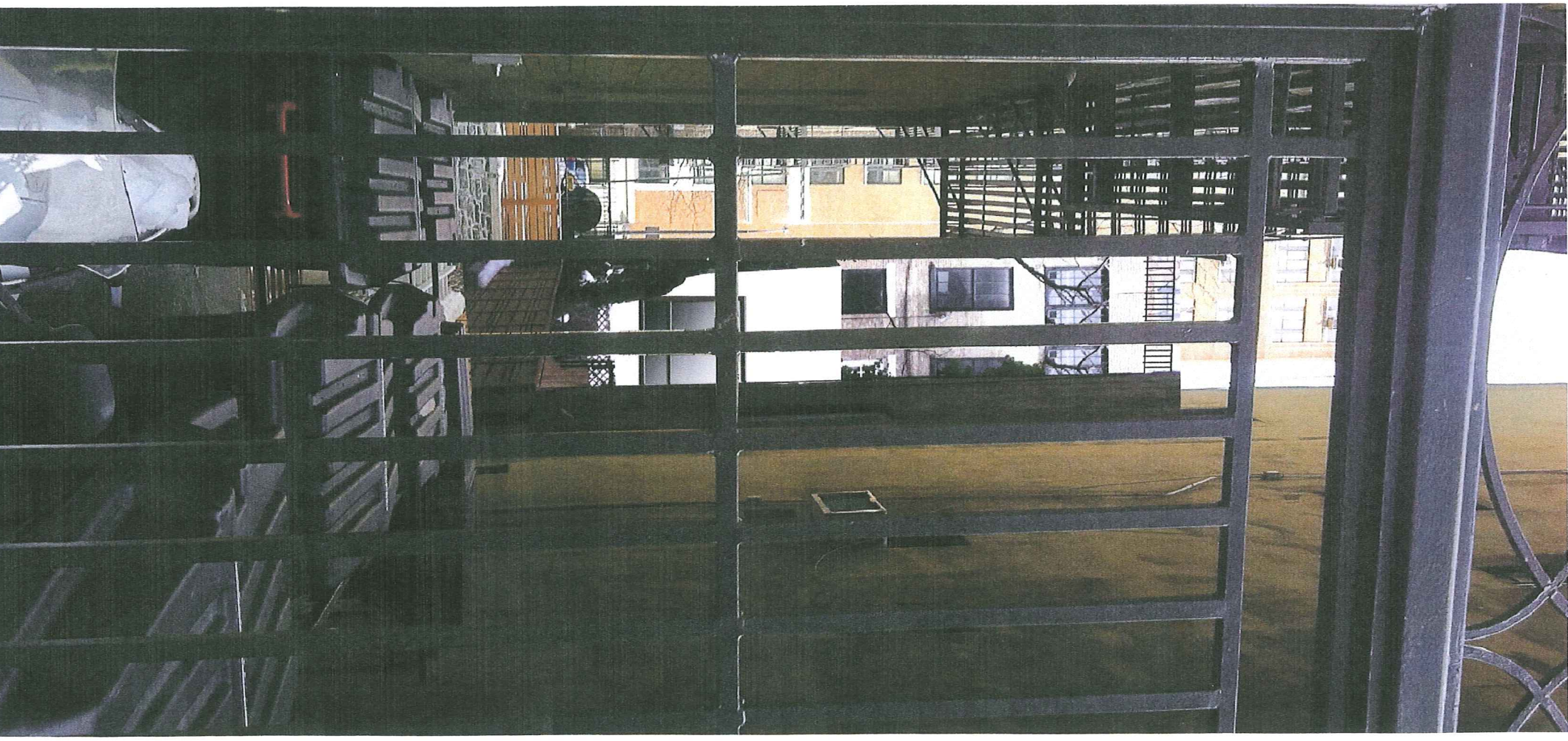
DATE: 03/01/11	PROJECT:	NYC LPC APPROVALS	Copyright © 2011 ARCHITECTURE IN FORMATION PC All ideas, designs, arrangements and plans indicated or represented by this drawing are owned by and the property of Architecture in Formation and were created, evolved, and developed for use on, and connection with the specified project. None of such ideas, design arrangements or plans shall be used or disclosed to any person, firm or corporation for any purpose whatsoever without the written permission of Architecture in Formation.
SCALE: 3/8"=1'-0"	4 EAST 10th Street New York, NY 10003	1 CB2/LPC APPROVALS 3/7/11	
DRAWN: RIK	Existing Rear Elevation (South)		
LPC-12			
SHEET:	DRAWING	REVISIONS:	



DATE: 03/01/11	PROJECT: NYC LPC APPROVALS	Copyright © 2011 ARCHITECTURE IN FORMATION PC All ideas, designs, arrangements and plans indicated or represented by this drawing are owned by and the property of Architecture in Formation and were created, evolved, and developed for use on, and connection with the specified project. None of such ideas, design arrangements or plans shall be used or disclosed to any person, firm or corporation for any purpose whatsoever without the written permission of Architecture in Formation.
SCALE: 3/8"=1'-0"	4 EAST 10th Street New York, NY 10003	
DRAWN: RIK	1 CB2/LPC APPROVALS 3/7/11	
SHEET: LPC-13	DRAWING: Proposed Rear Elevation (South)	REVISIONS:



DATE: 03/01/11	PROJECT:	NYC LPC APPROVALS	Copyright © 2011 ARCHITECTURE IN FORMATION PC
SCALE:	4 EAST 10th Street	1 CB2/LPC APPROVALS 3/7/11	All ideas, designs, arrangements and plans indicated or represented by this
DRAWN: RK	New York, NY 10003		drawing are owned by and the property of Architecture in Formation and were
SHEET:	View of Proposed Rear		created, evolved, and developed for use on, and connection with the
	Garden and Facade of		specified project. None of such ideas, design arrangements or plans shall
	Rear Addition		be used or disclosed to any person, firm or corporation for any purpose
	DRAWING	REVISIONS:	whosoever without the written permission of Architecture in Formation.

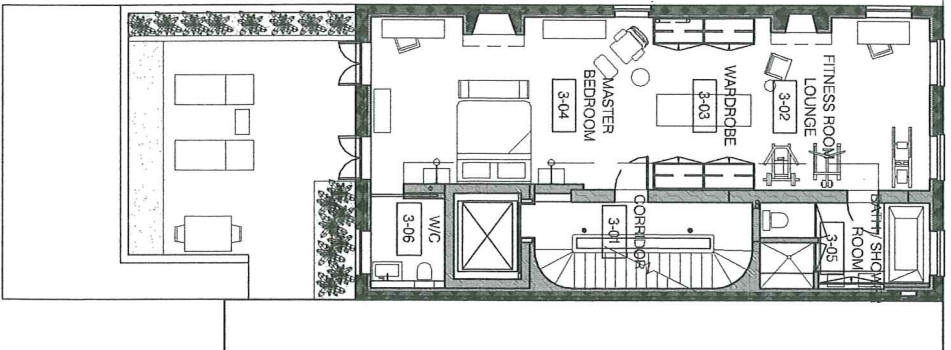


01 4 East 10th existing rear facade
View from 9th Street gate

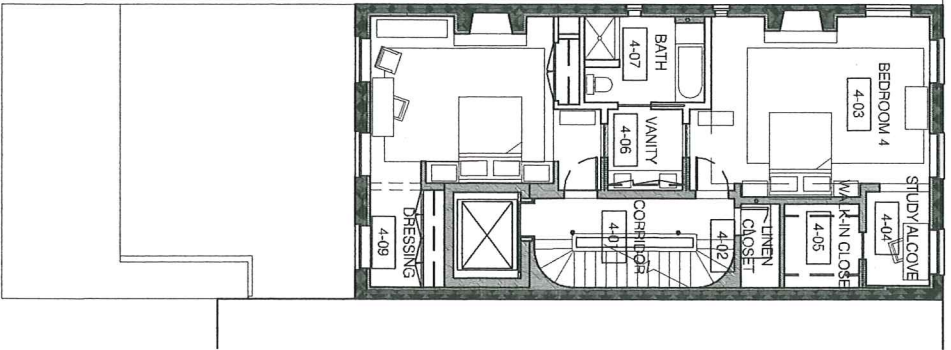
02 4 East 10th proposed rear facade
View from 9th Street gate

DATE: 03/01/11	PROJECT:	NYC LPC APPROVALS	Copyright © 2011 ARCHITECTURE IN FORMATION PC All ideas, designs, arrangements and plans indicated or represented by this drawing are owned by and the property of Architecture in Formation and were created, evolved, and developed for use on, and connection with the specified project. None of such ideas, design arrangements or plans shall be used or disclosed to any person, firm or corporation for any purpose whatsoever without the written permission of Architecture in Formation.
SCALE: noted	4 EAST 10th Street	1 CB2/LPC APPROVALS 3/7/11	
DRAWN: RK	New York, NY 10003		
LPC-15	Montage of Proposed		
SHEET:	Rear Facade viewed from 9th Street	REVISIONS:	

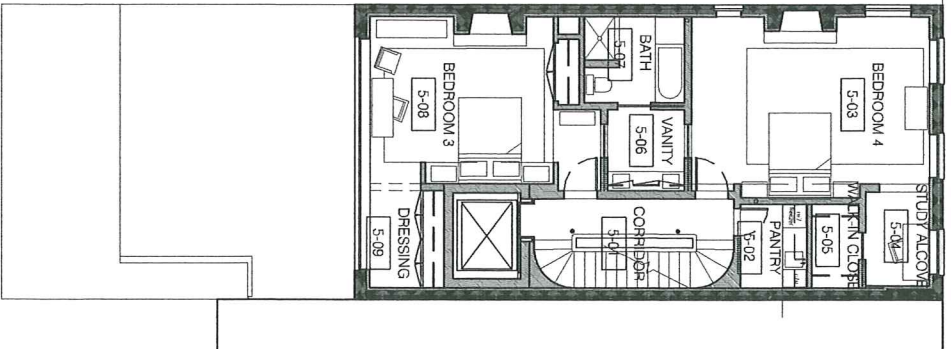
**ARCHITECTURE
IN FORMATION**
Architecture in Formation PC
Matthew Bremer AIA, Principal
526 West 26th St., Ste. 422, NYC 10001
T. 212 714 1006 F. 212 714 9026
www.aifny.com



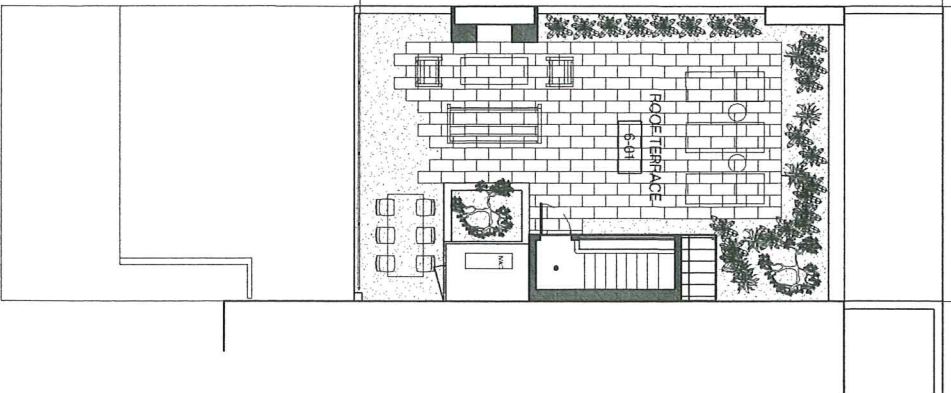
THIRD FLOOR



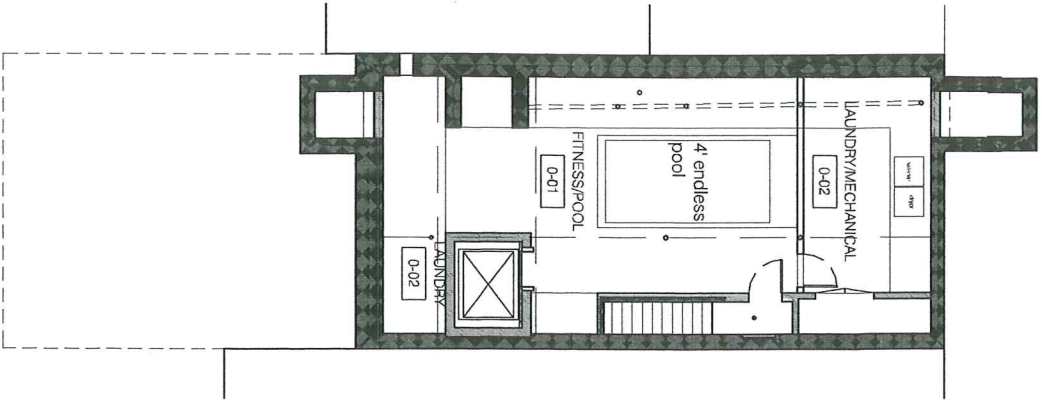
FOURTH FLOOR



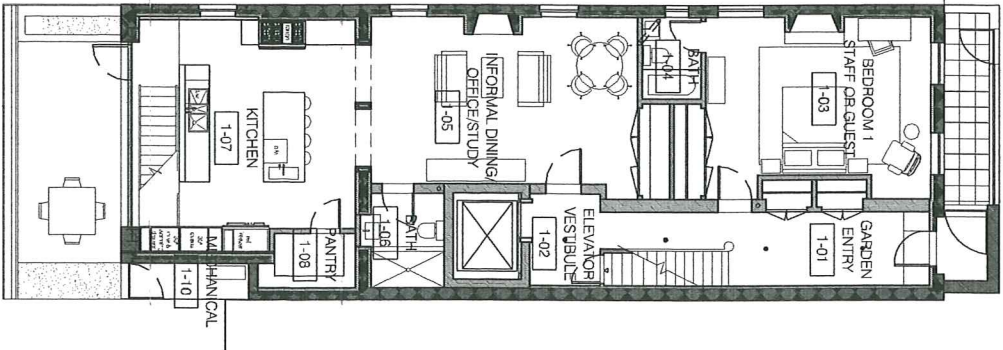
FIFTH FLOOR



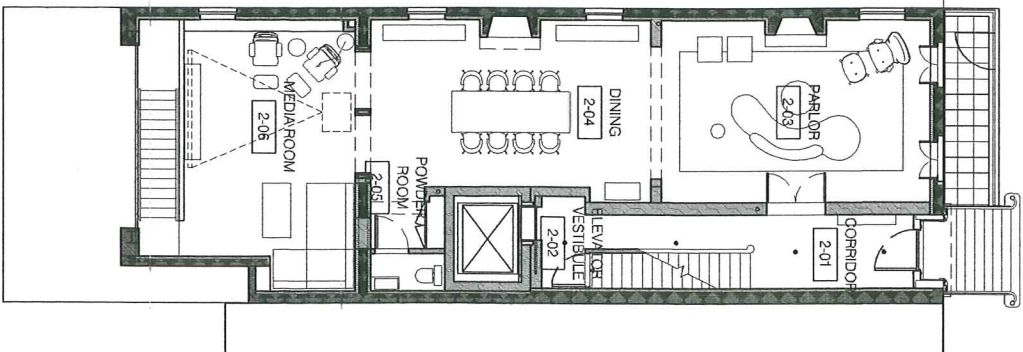
ROOF TERRACE



CELLAR FLOOR



GARDEN FLOOR



GARDEN FLOOR

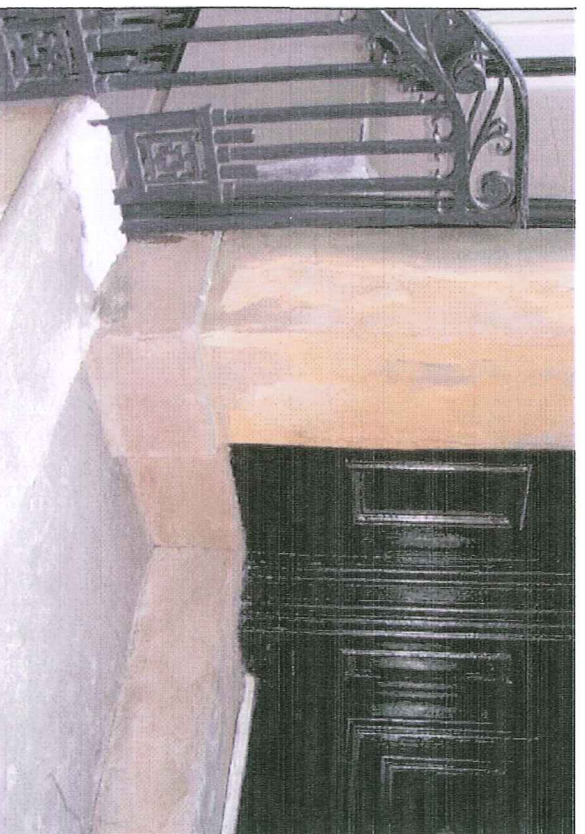
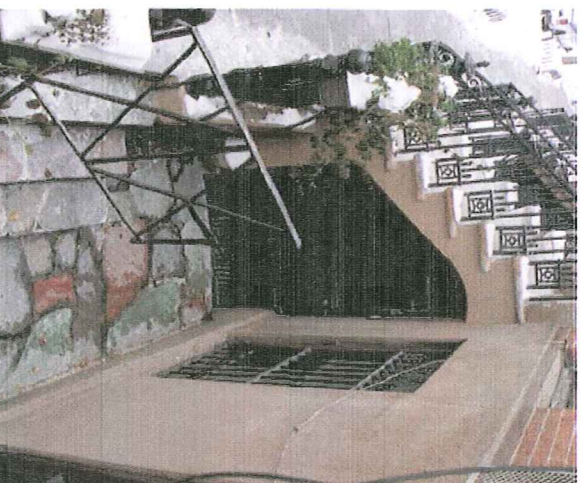
DATE: 03/01/11	PROJECT: 4 EAST 10th Street New York, NY 10003	NYC LPC APPROVALS 1 CB2/LPC APPROVALS 3/7/11	Copyright © 2011 ARCHITECTURE IN FORMATION All ideas, designs, arrangements and plans indicated or represented by this drawing are owned by and the property of Architecture in Formation and were created, evolved, and developed for use on, and connection with the specified project. None of such ideas, design arrangements or plans shall be used or disclosed to any person, firm or corporation for any purpose whatsoever without the written permission of Architecture in Formation.
SCALE: 1/8"=1'-0"			
DRAWN: RK	Proposed Floor Plans		
SHEET:	DRAWING	REVISIONS:	



01 Surrounding Stoops along south side of E. 10th St., between 5th Ave and University Pl.
#24; #18; #16

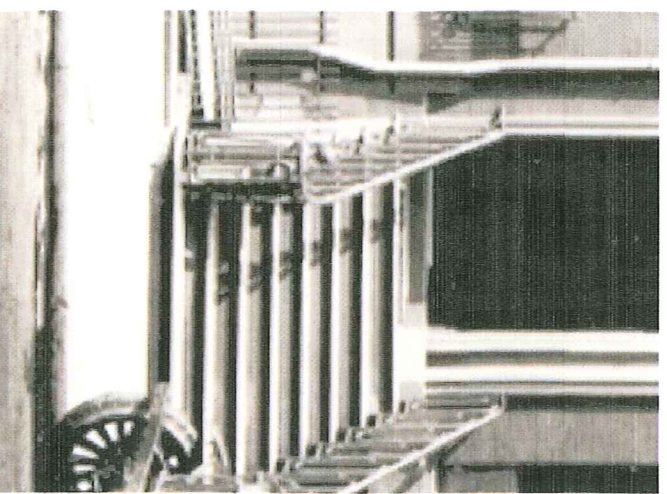
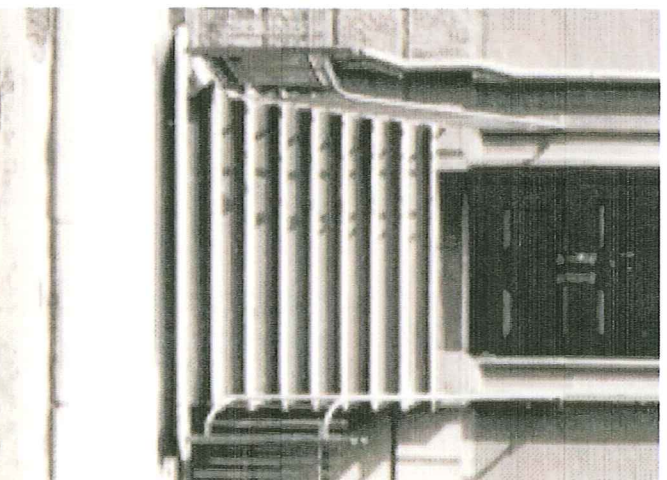


02 Metal Work: Railing Profile Precedent
#20/18; #18; #18



03 Garden Level Access Areaway
#20; #15

04 Entry Door set back
#16

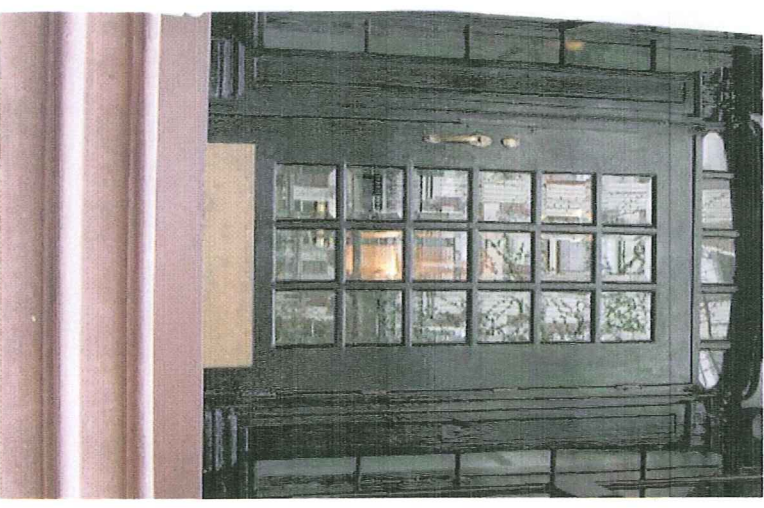
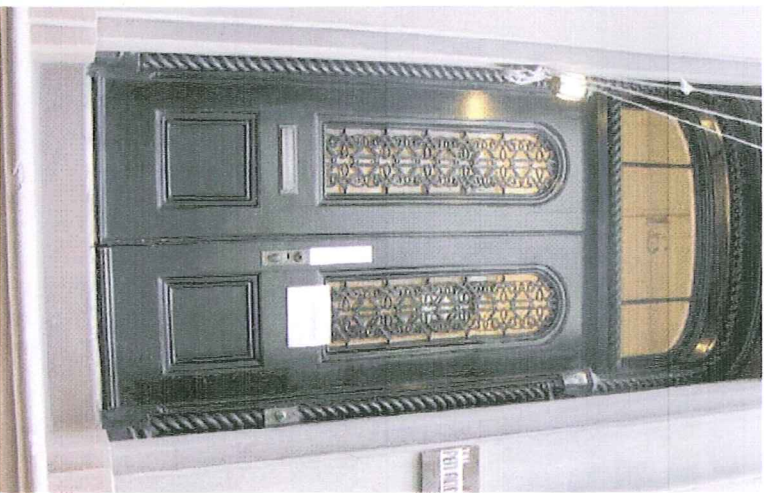


05 Entry Door set back
#14; #12

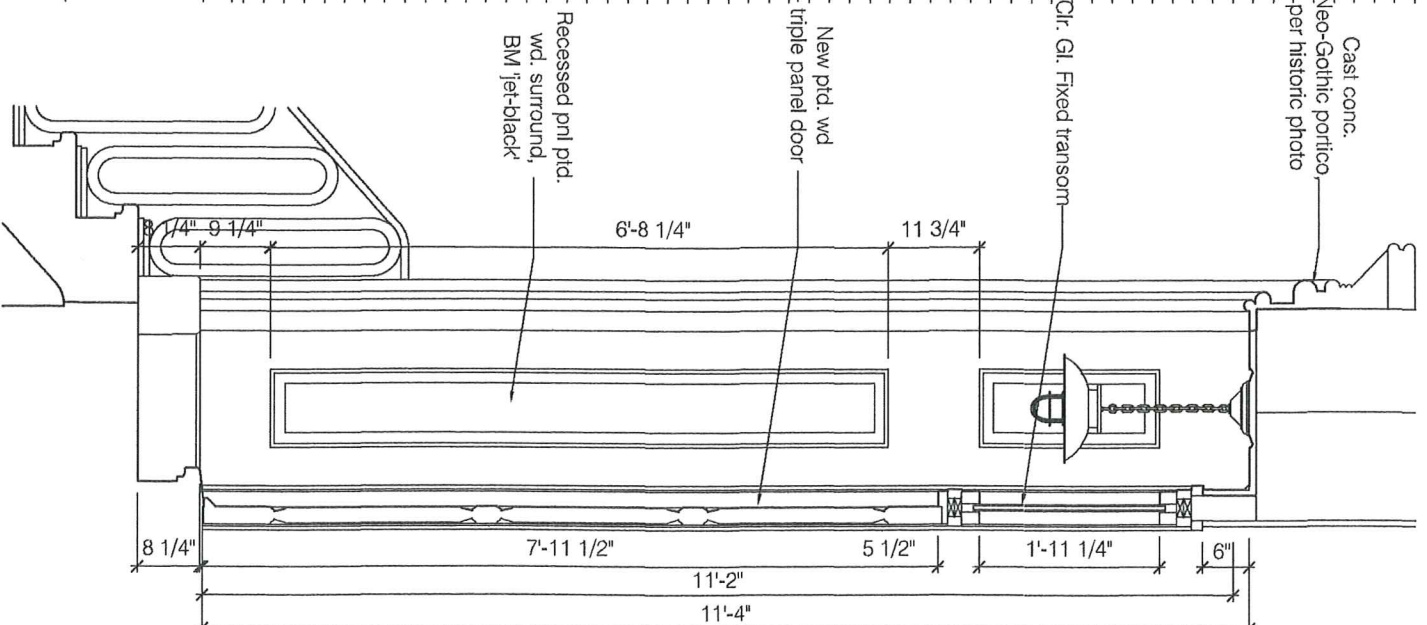
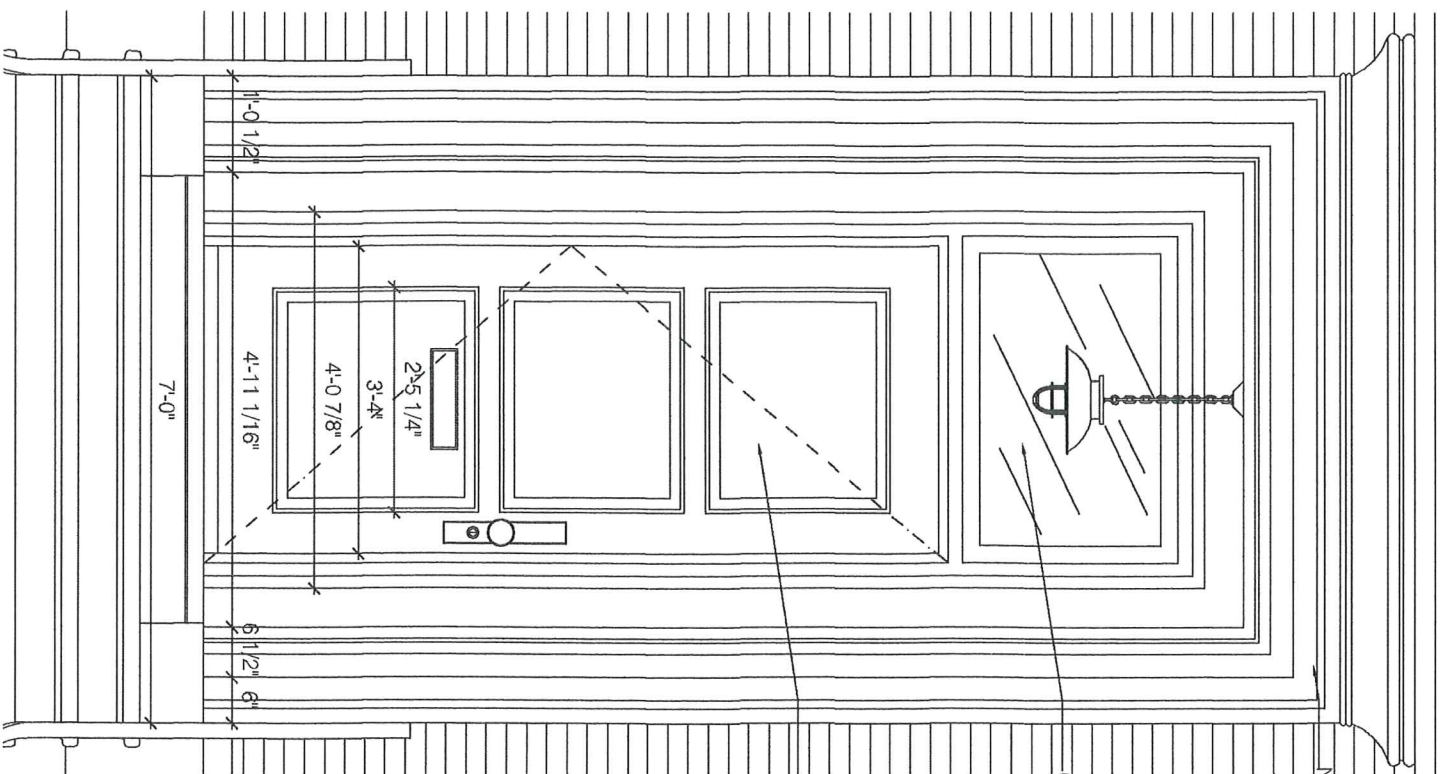
06 Historic Photo Showing original Stoop Pre-1927
#6; #4

DATE: 03/01/11	PROJECT: 4 EAST 10th Street New York, NY 10003	NYC LPC APPROVALS 3/7/11	Copyright © 2011 ARCHITECTURE IN FORMATION PC
SCALE: noted		1 CB2/LPC APPROVALS 3/7/11	All ideas, designs, arrangements and plans indicated or represented by this drawing are owned by and the property of Architecture in Formation and were created, evolved, and developed for use on, and connection with the specified project. None of such ideas, design arrangements or plans shall be used or disclosed to any person, firm or corporation for any purpose whatsoever without the written permission of Architecture in Formation.
DRAWN: RK	Precedents for Stoop and Metalwork		
LPC-17			
SHEET:	DRAWING	REVISIONS:	

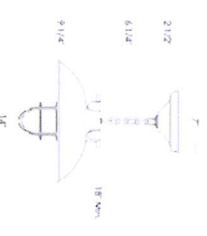
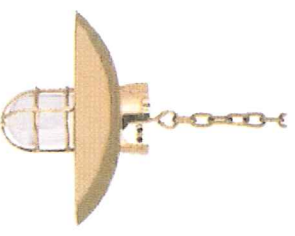
**ARCHITECTURE
IN FORMATION**
Architecture in Formation PC
Matthew Bremer AIA, Principal
526 West 26th St., Ste. 422, NYC 10001
T. 212 714 1006 F. 212 714 9026
www.aifny.com



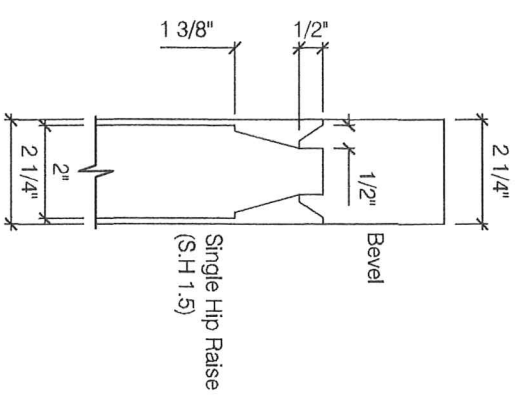
01 Doors of other Buildings in the Row



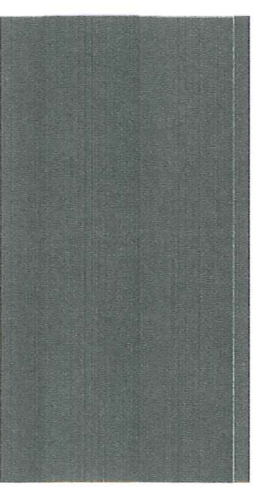
- | | |
|---|--|
| \$170 | Polished Brass |
| \$865 | Polished Chrome |
| | Polished Nickel |
| | Green Patina |
| | Black Patina |
| \$170 | Satin Nickel |
| | Architectural Bronze |
| | Shiny Brass |
| | Satin Brass |
| | Antique Brass |
| | Antique Nickel |
| * | Custom *Metal - not included |
| ≡ | Interchangeable Medium Base 1000 x 1 |
|  | UL Listed for use in Damp or Wet Locations |
| Options | Available on a per-project basis. Add \$100 for each additional color. Please Specify. |
| \$45 | Replacement Jelly Jar, USAID America C-105 |



04 Entry Door Profile



05 Color Sample
Benjamin Moore 'Jet-Black'



02 Entry Door Elevation

03 Entry Door Section

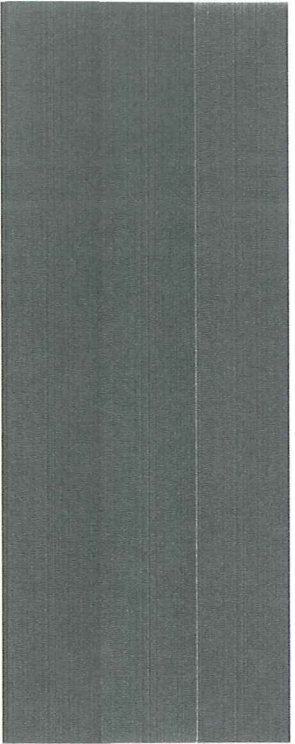
06 Portico Entry Light

SPEC Sheet: Lakeside Chain

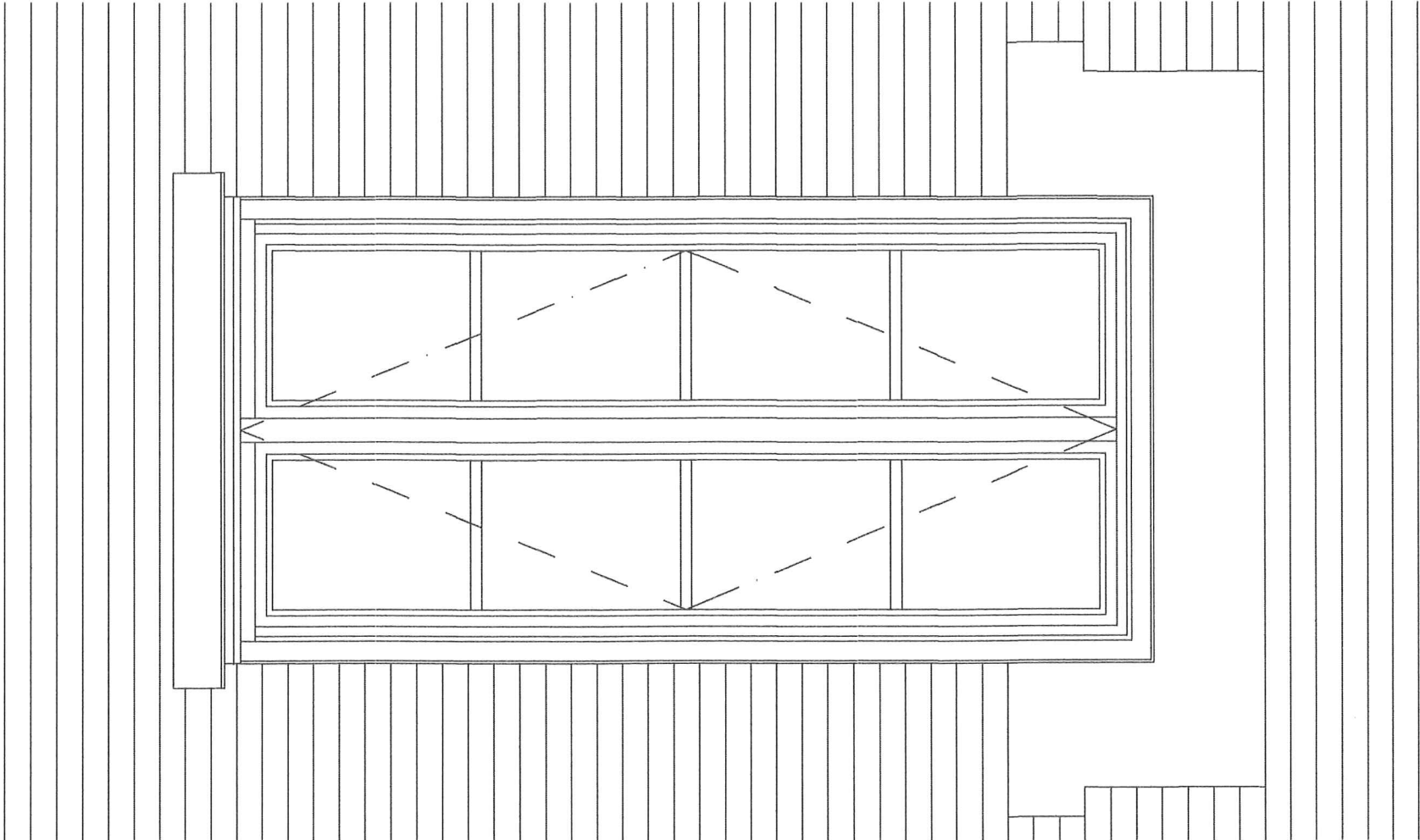
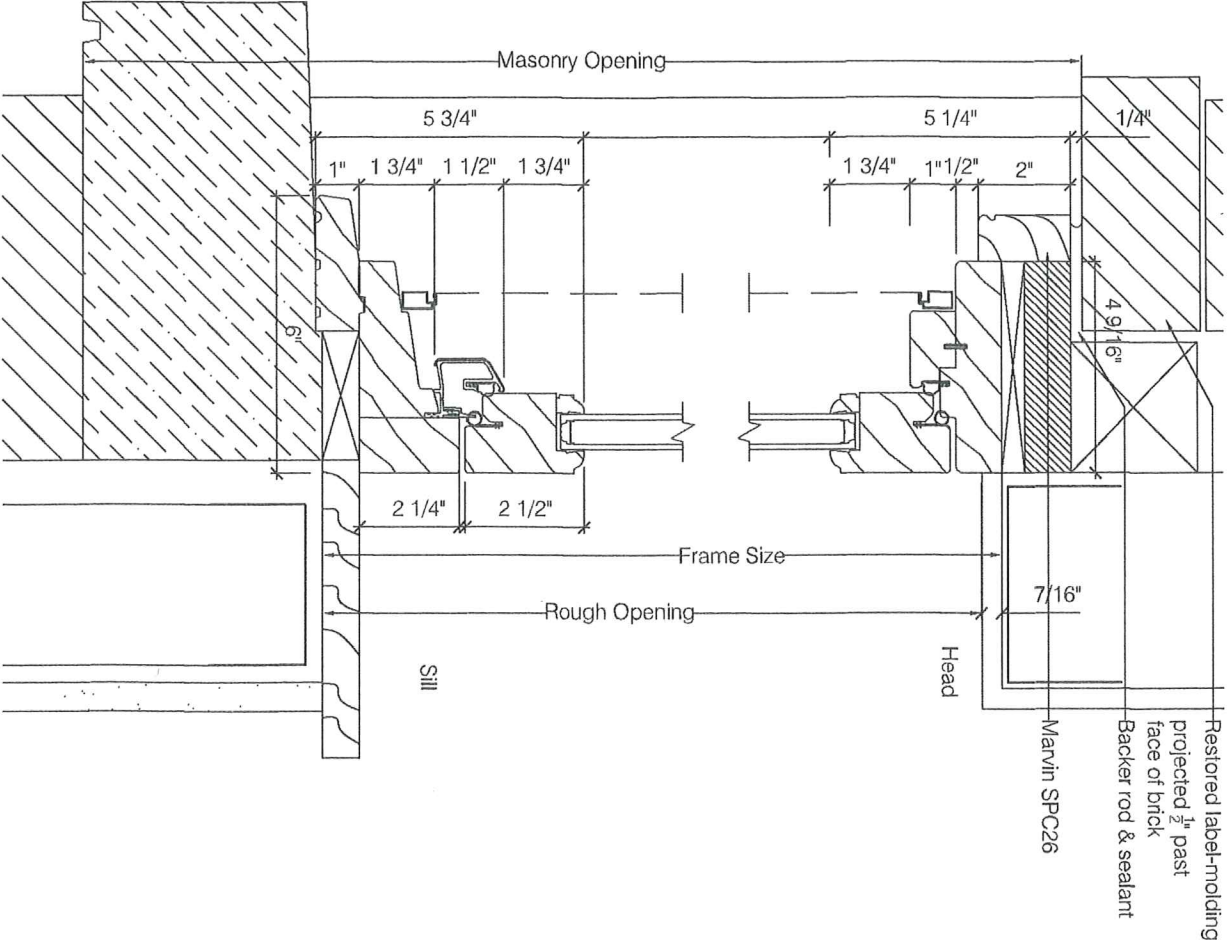
DATE: 03/01/11	PROJECT:	NYC LPC APPROVALS	Copyright © 2011 ARCHITECTURE IN FORMATION PC All ideas, designs, arrangements and plans indicated or represented by this drawing are owned by and the property of Architecture in Formation and were created, evolved, and developed for use on, and connection with the specified project. None of such ideas, design arrangements or plans shall be used or disclosed to any person, firm or corporation for any purpose whatsoever without the written permission of Architecture in Formation.
SCALE: noted	4 EAST 10th Street New York, NY 10003	1 CB2/LPC APPROVALS 3/7/11	
DRAWN: RJK			
LPC-19	Proposed Portico and Parlor Level Entry Door		
SHEET:	DRAWING	REVISIONS:	

ARCHITECTURE
INFORMATION

Architecture in Formation PC
Matthew Bremner AIA, Principal
526 West 26th St., Ste. 422, NYC 10001
T. 212 714 1006 F. 212 714 9026
www.aifny.com

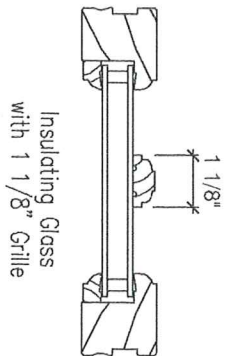
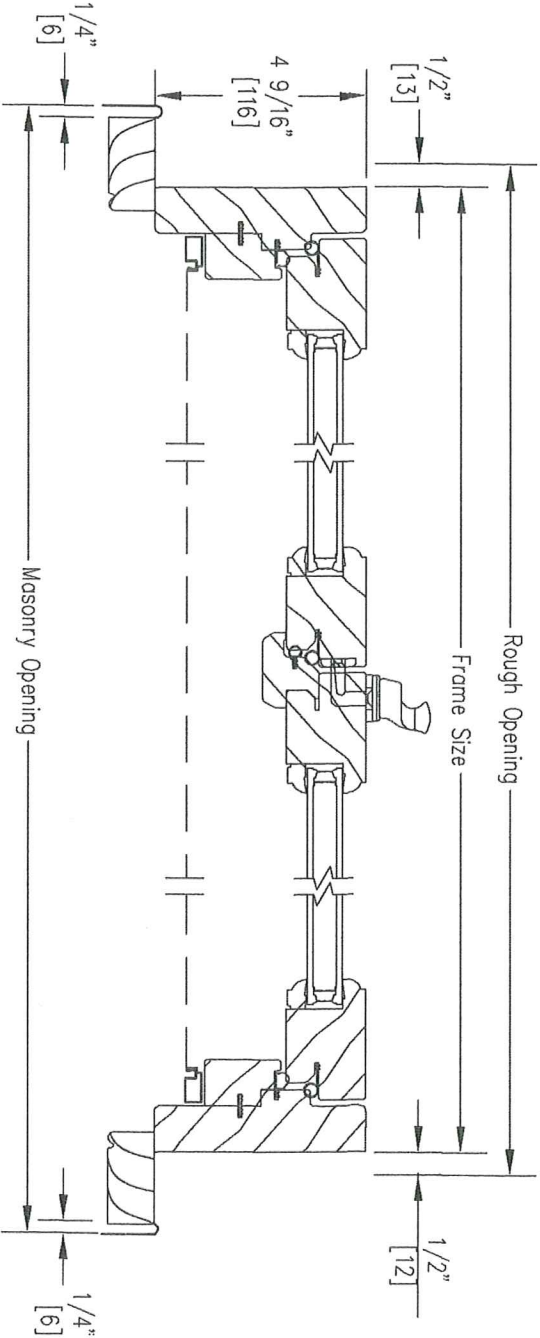


01 Color Sample
Benjamin Moore Jet-Black, Semi-Gloss



02 Window Vertical Section
6"=1'-0"

04 Window Typical Front Elevation
1 1/2"=1'-0"



03 Window Horizontal Section
6"=1'-0"

05 Divide Lite: Sash Detail
6"=1'-0"

DATE: 03/01/11	PROJECT: 4 EAST 10th Street New York, NY 10003	NYC LPC APPROVALS 3/7/11	Copyright © 2011 ARCHITECTURE IN FORMATION PC
SCALE: noted			All ideas, designs, arrangements and plans indicated or represented by this drawing are owned by and the property of Architecture in Formation and were created, evolved, and developed for use on, and connection with the specified project. None of such ideas, design arrangements or plans shall be used or disclosed to any person, firm or corporation for any purpose whatsoever without the written permission of Architecture in Formation.
DRAWN: RK	Window Type Details - Casement		
SHEET: LPC-20		REVISIONS:	

ARCHITECTURE
IN FORMATION
Architecture in Formation PC
Matthew Brenner AIA, Principal
526 West 26th St., Ste. 422, NYC 10001
T. 212 714 1006 F. 212 714 9026
www.aifny.com



01 4 East 10th Street Cornice overview and Top Floor Windows
Existing Condition



02 Detail: East Side of Cornice in relation to 6 East 10th, adjacent
Existing Condition



03 Detail at West side of Cornice
Existing Condition

04 Precedent: 20 and 18 E 10th Street
Cornice Condition

DATE: 03/01/11	PROJECT: 4 EAST 10th Street	NYC LPC APPROVALS	Copyright © 2011 ARCHITECTURE IN FORMATION PC All ideas, designs, arrangements and plans indicated or represented by this drawing are owned by and the property of Architecture in Formation and were created, evolved, and developed for use on, and connection with the specified project. None of such ideas, design arrangements or plans shall be used or disclosed to any person, firm or corporation for any purpose whatsoever without the written permission of Architecture in Formation.
SCALE: noted	4 EAST 10th Street	1 CB2/LPC APPROVALS 3/7/11	
DRAWN: RIK	New York, NY 10003		
	Images of Existing Cornice to be Repaired		
SHEET:	DRAWING	REVISIONS:	