



1 PANORAMIC PHOTOGRAPH

52-58 GANSEVOORT ST



2 PROPOSED EXTERIOR ELEVATION  
Scale: 1/16" = 1'-0"

52-58 GANSEVOORT STREET



3 BLOCK PLAN  
Scale: 1/16" = 1'-0"

**FARMER'S MARKET**

52-58 GANSEVOORT ST.  
NEW YORK, NY

ISSUE:	DATE:	FOR:
.00	01.03.2012	DOB FILING
.01	03.15.2012	REVISION #1
.02	04.26.2012	REVISION #2



Wormser + Associates, Architects  
652 Broadway  
New York, NY 10012  
Tel: 212 505 6962  
Fax: 212 477 0273

PROJECT:  
FARMER'S MARKET  
52-58 GANSEVOORT ST.  
NEW YORK, NY

DRAWING TITLE:  
SITE INFORMATION

SEAL & SIGNATURE: \_\_\_\_\_  
DATE: 7/22/10  
PROJ NO: 3112  
DRAWN BY: MM  
CHK BY: PW  
DWG No:  
**LPC-1**




CONCEPT RENDERING

FARMER'S MARKET

52-58 GANSEVOORT ST.  
NEW YORK, NY

ISSUE:	DATE:	FOR:
.00	01.03.2012	DOB FILING
.01	03.15.2012	REVISION #1
.02	04.26.2012	REVISION #2

Wormser + Associates, Architects  
652 Broadway  
New York, NY 10012  
Tel: 212 505 6962  
Fax: 212 477 0273



PROJECT:  
**FARMER'S MARKET**  
52-58 GANSEVOORT ST.  
NEW YORK, NY

DRAWING TITLE  
**RENDERING**

SEAL & SIGNATURE:	DATE: 7/22/10
	PROJ. NO: 3112
	DRAWN BY: MM
	CHK BY: PW
	DWG No:
<b>LPC-2</b>	

File name: A1\_0\_Plans\_3006\_Upper000kin.voc



1940 TAX PHOTOGRAPH



LANDMARK DESIGNATION PHOTOGRAPH



EXISTING CONDITIONS



EXISTING CONDITIONS



# FARMER'S MARKET

52-58 GANSEVOORT ST.  
NEW YORK, NY

ISSUE:	DATE:	FOR:
.00	01.03.2012	DOB FILING
.01	03.15.2012	REVISION #1
.02	04.28.2012	REVISION #2



Wormser + Associates, Architects

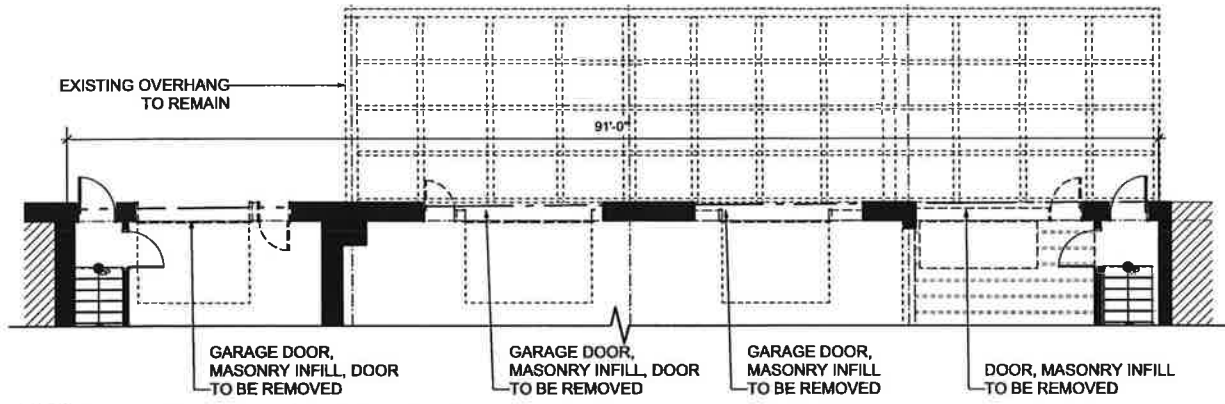
652 Broadway  
New York, NY 10012  
Tel: 212 505 6962  
Fax: 212 477 0273

PROJECT:  
**FARMER'S MARKET**  
52-58 GANSEVOORT ST.  
NEW YORK, NY

DRAWING TITLE:  
**PHOTOGRAPHS**

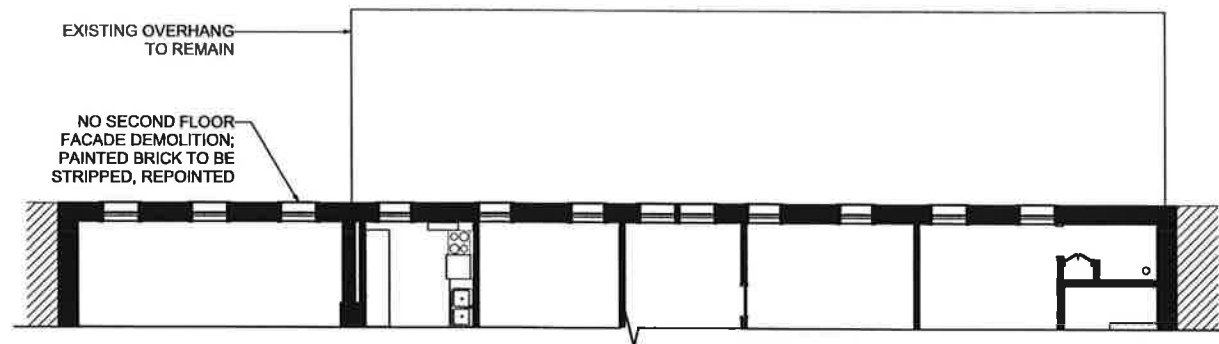
SEAL & SIGNATURE: \_\_\_\_\_  
DATE: 7/23/10 \_\_\_\_\_  
PROJ NO: 3112 \_\_\_\_\_  
DRAWN BY: MM \_\_\_\_\_  
CHK BY: PW \_\_\_\_\_  
DWG No: \_\_\_\_\_  
**LPC-3**

GANSEVOORT STREET



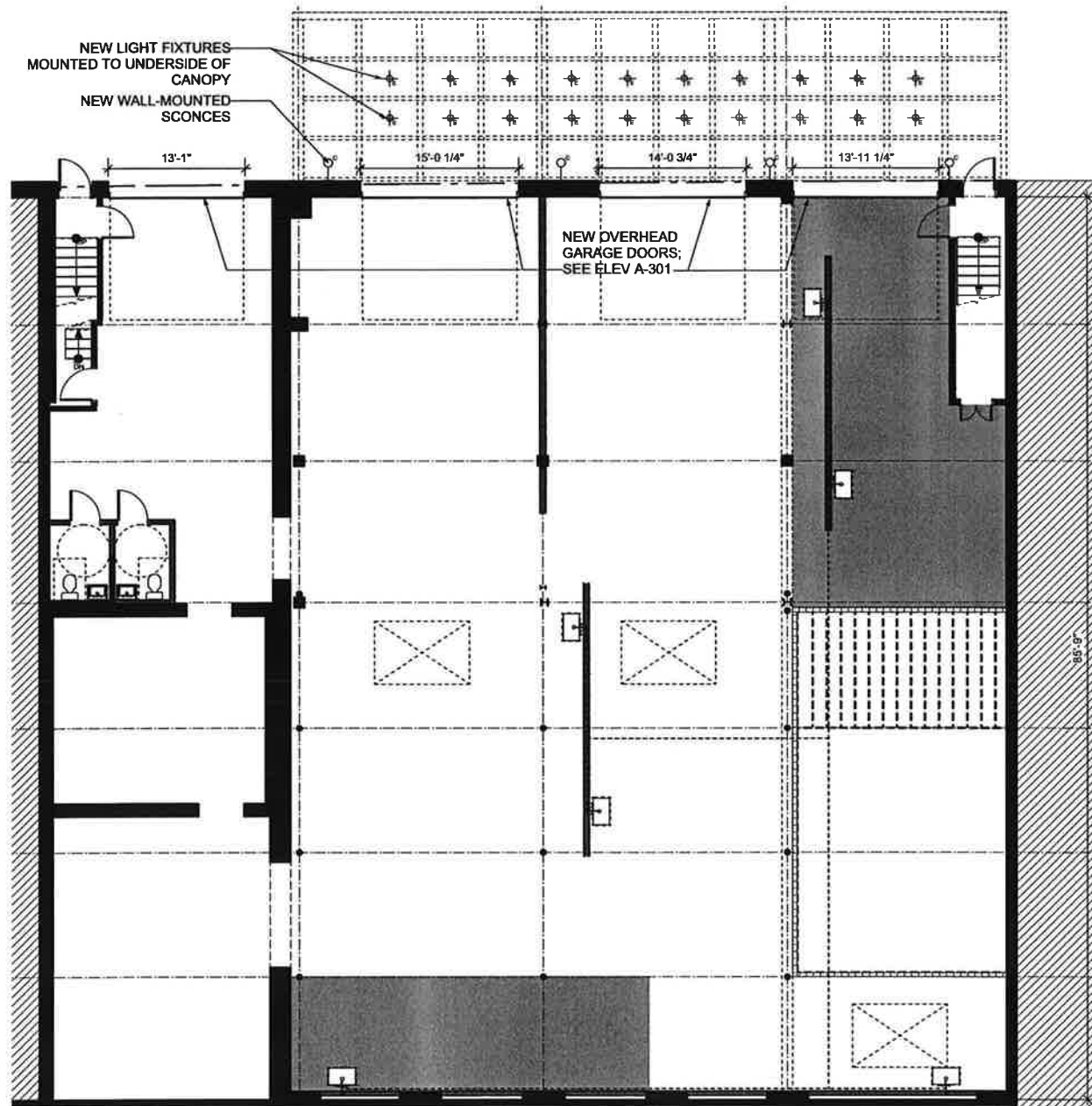
D-1 FIRST FLOOR FACADE DEMOLITION PLAN  
Scale: 1/8" = 1'-0"

GANSEVOORT STREET



D-2 SECOND FLOOR FACADE DEMOLITION PLAN  
Scale: 1/8" = 1'-0"

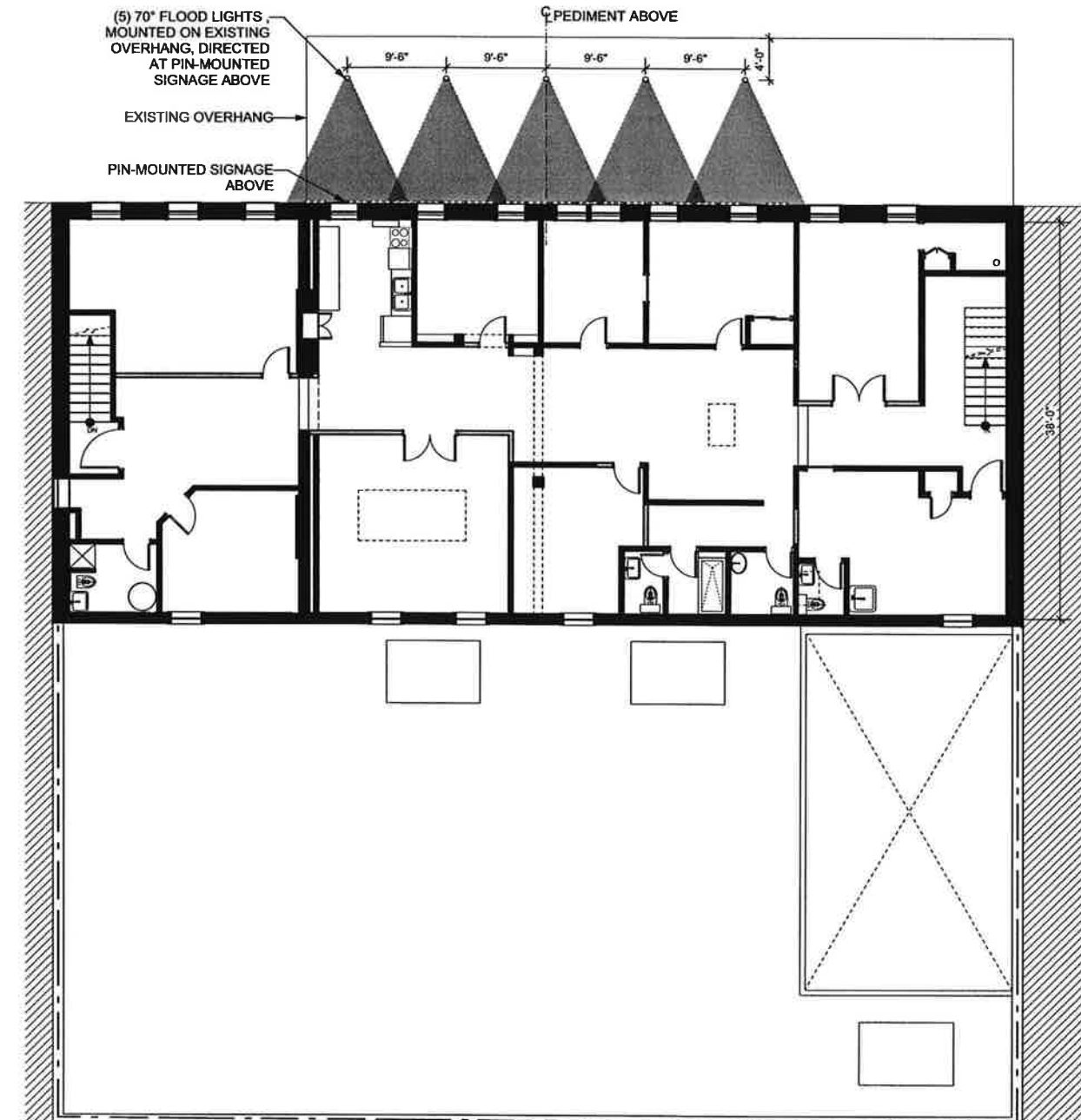
GANSEVOORT STREET



1 FIRST FLOOR CONSTRUCTION PLAN  
Scale: 1/8" = 1'-0"



GANSEVOORT STREET



2 SECOND FLOOR CONSTRUCTION PLAN  
Scale: 1/8" = 1'-0"

# FARMER'S MARKET

52-58 GANSEVOORT ST.  
NEW YORK, NY

ISSUE:	DATE:	FOR:
.00	01.03.2012	DOB FILING
.01	03.15.2012	REVISION #1
.02	04.26.2012	REVISION #2



Wormser + Associates, Architects  
 652 Broadway  
 New York, NY 10012  
 Tel: 212 505 6962  
 Fax: 212 477 0273

PROJECT:  
**FARMER'S MARKET**  
 52-58 GANSEVOORT ST.  
 NEW YORK, NY

DRAWING TITLE:  
**FLOOR PLANS**

SEAL & SIGNATURE: \_\_\_\_\_  
 DATE: 7/22/10  
 PROJ NO: 3112  
 DRAWN BY: MM  
 CHK BY: FW  
 DWG No:

LPC-4

**FARMER'S MARKET**

52-58 GANSEVOORT ST.  
NEW YORK, NY

ISSUE:	DATE:	FOR:
.00	01.03.2012	DOB FILING
.01	03.15.2012	REVISION #1
.02	04.26.2012	REVISION #2



1 EXISTING EXTERIOR ELEVATION  
Scale: 1/4" = 1'-0"



2 PROPOSED EXTERIOR ELEVATION  
Scale: 1/4" = 1'-0"



Wormser + Associates, Architects  
652 Broadway  
New York, NY 10012  
Tel: 212 505 6962  
Fax: 212 477 0273

PROJECT:  
**FARMER'S MARKET**  
52-58 GANSEVOORT ST.  
NEW YORK, NY

DRAWING TITLE:  
**EXTERIOR ELEVATION**

SEAL & SIGNATURE: \_\_\_\_\_ DATE: 7/22/10  
PROJ NO: 3112  
DRAWN BY: MM  
CHK BY: PW  
DWG No: \_\_\_\_\_

**LPC-5**

# BockLighting

## Vaportight Ceiling Mount

### VX SERIES SPECIFICATIONS

**APPLICATION:** Recommended for use in all indoor and outdoor locations exposed to rain and hail. Suitable for use in high humidity and corrosive environments. Recommended for use in all locations where high pressure sodium, compact fluorescent, pulse start metal halide, or high pressure sodium lamps are used. May be mounted in wet or damp locations.

**LIGHT SOURCE:** Standard incandescent bulb or medium base CFL. Many fixtures can be modified for high pressure sodium, compact fluorescent, pulse start metal halide, or high pressure sodium lamps. Please consult factory for details.

**HOUSING CONSTRUCTION:** Cast iron with heavy duty powder coated finish. Housing is available in 150, 300, 425, 600, 750, 1000, 1500, 2000, and 3000 watt configurations. Housing is available in 150, 300, 425, 600, 750, 1000, 1500, 2000, and 3000 watt configurations.

**FINISH:** Standard finish is powder coated aluminum. Custom finishes are available. Please consult factory for details.

**GUARD:** Standard finish is powder coated aluminum. Custom finishes are available. Please consult factory for details.

**GLOBE:** This series is available in standard globe or clear globe. Custom globe colors include amber, opal, blue, green, red, and many others. Please consult factory for details.

**REFLECTOR:** Custom reflector options include down, cone, angle, beam, and flood. Please consult factory for details.

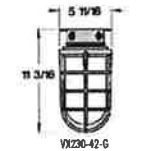
**SOCKET:** Standard socket is medium base. Please consult factory for details.

**HARDWARE:** All hardware are standard. Please consult factory for details.

**APPROVALS:** Listed with Underwriters Laboratories for WET LOCATIONS, UL LISTED.



VX Series 300W



VX20-42-G



VX Series 150W



VX215-41-G

### Glass Globes



VT - VT4

BockLighting.com

092010

UNDER-OVERHANG FIXTURE

# BockLighting

## Vaportight Pendant Mount

### VP SERIES SPECIFICATIONS

**APPLICATION:** Recommended for use in all indoor and outdoor locations exposed to rain and hail. Suitable for use in high humidity and corrosive environments. Recommended for use in all locations where high pressure sodium, compact fluorescent, pulse start metal halide, or high pressure sodium lamps are used. May be mounted in wet or damp locations.

**LIGHT SOURCE:** Standard incandescent bulb or medium base CFL. Many fixtures can be modified for high pressure sodium, compact fluorescent, pulse start metal halide, or high pressure sodium lamps. Please consult factory for details.

**HOUSING CONSTRUCTION:** Cast iron with heavy duty powder coated finish. Housing is available in 150, 300, 425, 600, 750, 1000, 1500, 2000, and 3000 watt configurations. Housing is available in 150, 300, 425, 600, 750, 1000, 1500, 2000, and 3000 watt configurations.

**FINISH:** Standard finish is powder coated aluminum. Custom finishes are available. Please consult factory for details.

**GUARD:** Standard finish is powder coated aluminum. Custom finishes are available. Please consult factory for details.

**GLOBE:** This series is available in standard globe or clear globe. Custom globe colors include amber, opal, blue, green, red, and many others. Please consult factory for details.

**REFLECTOR:** Custom reflector options include down, cone, angle, beam, and flood. Please consult factory for details.

**SOCKET:** Standard socket is medium base. Please consult factory for details.

**HARDWARE:** All hardware are standard. Please consult factory for details.

**APPROVALS:** Listed with Underwriters Laboratories for WET LOCATIONS, UL LISTED.



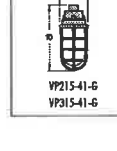
VP Series 300W



VP20-42-G  
VP30-42-G



VP Series 150W



VP215-41-G  
VP315-41-G

### Glass Globes



VT - VT2

BockLighting.com

092010

EXTERIOR PENDANT SCENGE W/ REFLECTOR

## CFG3 Garti 3 Flood Light

Job Information:  
Project: \_\_\_\_\_ Prepared by: \_\_\_\_\_  
Comments: \_\_\_\_\_ Approved by: \_\_\_\_\_

### Features:

Application: Exterior of Buildings, Signs, Displays, General Safety and Security Lighting.

Source: Compact Fluorescent, Pulse Start Metal Halide, High Pressure Sodium.

Material: Die-Cast Aluminum Housing and Hinged Frame, Powder Coat Finish, Tempered Flat Clear Glass Lens.

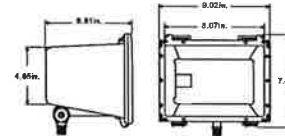
Reflector: Aluminum Flood Reflector.

Mounting: 1/2" NPT Die-Cast Swivel.

Listing: cULus Listed for wet locations.

Accessories:

PC: PhotoCell, Designate Voltage.



### Ordering Guide:

Example: CFG3-CF126-BZ

Series	Lamp Type	Color
CFG3	CF = Compact Fluorescent CF126 = 1-20W LNW CF132 = 1-32W LNW CF142 = 1-42W LNW HPS = High Pressure Sodium HPS58 = 50W QLAD HPS70 = 70W QLAD HPS140 = 300W QLAD HPS150 = 150W QLAD PS = Pulse Start Metal Halide PS58 = 50W, 120/277V PS70 = 70W QLAD PS100 = 100W QLAD	BZ = Bronze

# BockLighting

30901 Carter St. Solon, Ohio 44139  
Phone: (216) 912-7050 Fax: (216) 912-7051  
www.bocklighting.com

CFG3  
20120403

ABOVE-OVERHANG SIGNAGE FLOOD

### VAPORTIGHT PENDANT MOUNT WITH OPTIONAL REFLECTORS



16" DOME REFLECTOR	15" CONE REFLECTOR	14" DEEP BOWL	14" ANGLE REFLECTION	20" RADIAL WADE
VP215-41-G-0016 VP315-41-G-0016	VP215-41-G-0015 VP315-41-G-0015	VP215-41-G-0014 VP315-41-G-0014	VP215-41-G-0014 VP315-41-G-0014	VP215-41-G-0020 VP315-41-G-0020

VP210-42-G-0010 VP310-42-G-0010	VP210-42-G-0015 VP310-42-G-0015	VP210-42-G-0014 VP310-42-G-0014	VP210-42-G-0014 VP310-42-G-0014	VP210-42-G-0020 VP310-42-G-0020

### VAPORTIGHT PENDANT MOUNT ORDERING GUIDE

Series	Watt Size	Material	Color	Reflector	Globe Finish	Reflector Options	Reflector Color
VP	150	MED - Standard	D	41 / 42	G	00 - Black	00 - Black
						01 - White	01 - White
						02 - Red	02 - Red
						03 - Yellow	03 - Yellow
						04 - Blue	04 - Blue
						05 - Green	05 - Green
	300	MED - Standard	D	41 / 42	G	06 - Brown	06 - Brown
						07 - Ventgrills	07 - Ventgrills
						08 - Dark Green	08 - Dark Green
						09 - Silver	09 - Silver
						10 - Silver	10 - Silver
						11 - Silver	11 - Silver
150	MED - Standard	D	41 / 42	G	12 - Clear	12 - Clear	
					13 - Amber	13 - Amber	
					14 - Opal	14 - Opal	
					15 - Blue	15 - Blue	
					16 - Green	16 - Green	
					17 - Red	17 - Red	

VP - 2 - 15 - 41 - 0 - G - 00 - AR14 - G1

P: (216) 912-7050

F: (216) 912-7051

VT - VT3

# FARMER'S MARKET

52-58 GANSEVOORT ST.  
NEW YORK, NY

ISSUE:	DATE:	FOR:
.00	01.03.2012	DOB FILING
.01	03.15.2012	REVISION #1
.02	04.26.2012	REVISION #2

Wormser + Associates, Architects



652 Broadway  
New York, NY 10012  
Tel: 212 505 6962  
Fax: 212 477 0273

PROJECT:

FARMER'S MARKET  
52-58 GANSEVOORT ST.  
NEW YORK, NY

DRAWING TITLE:

FIXTURE  
INFORMATION

SEAL & SIGNATURE:

DATE: 7/22/10  
PROJ NO: 3112  
DRAWN BY: MM  
CHK BY: PW  
DWG No:

LPC-6