

EXISTING CONDITION - WEST 8TH STREET



SITE LOCATION PHOTO

BLOCK: 572
LOT: 45
ZONE: C 4-5 (LC)
MAP: 12C



EXISTING CONDITION - STOREFRONTS



5 WEST 8TH STREET NEW YORK, N.Y.

LPC-1

LOCK: 572
DT: 45
ZONE: C 4-5 (LC)
MAP: 12C



LPC-1



PROPOSED STREET VIEW RENDERING AT 5 WEST 8TH STREET

5 WEST 8TH STREET NEW YORK, N.Y.

LPC-



MARLTON 1911



MARLTON POSTCARD, POST - 1913



MARLTON 1931



TAX PHOTO, C. 1940

5 WEST 8TH STREET NEW YORK, N.Y.

LPC-2



8TH STREET LOOKING EAST FROM 6TH AVENUE, C.1940



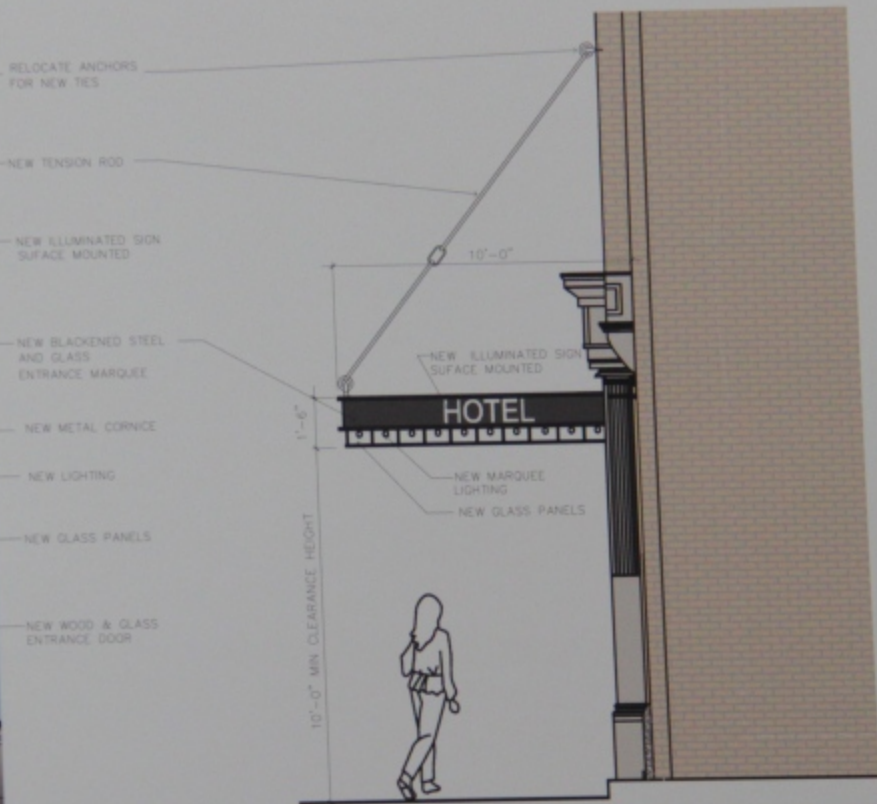
8TH STREET LOOKING WEST , LPC DESIGNATION PHOTO. C.1967

5 WEST 8TH STREET NEW YORK, N.Y.

L



MARQUEE RENDERED ELEVATION



MARQUEE RENDERED SIDE ELEVATION

5 WEST 8TH STREET NEW YORK, N.Y.

LPC-7



326 BLEECKER ST.



349 6TH AVE

PHOTOS OF SIMILAR FACADE IN GREENWICH VILLAGE

5 WEST 8TH STREET NEW YORK, N.Y.



105 WAVERLY PLACE



123 WAVERLY PLACE



31 WEST 12TH STREET



29 WASHINGTON SQUARE WEST

PHOTOS OF BUILDING WITH ENTRANCE MARQUEE

5 WEST 8TH STREET NEW YORK, N.Y.

LPC-11



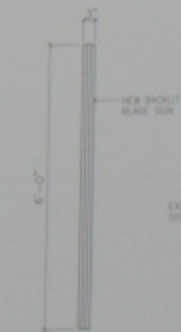
EXISTING STREET FRONT ELEVATION



PROPOSED STREET FRONT ELEVATION

5 WEST 8TH STREET NEW YORK, N.Y.

LPC-4



**BLADE SIGN
FRONT ELEVATION**



PAINTED SIGN SIDE ELEVATION

SIGN TO BE BLACK PAINTED
LETTERS ON WHITE
BACKGROUND WITH BLACK
BORDER

SIGN ANALYZES
AREA OF VISIBLE SURFACE
=1,752 SF
20% =352 SF

SIGN=12' x 15' = (180) SF

SIGN EQUALS LESS THAN 20%
OF VISIBLE SURFACE



**BLADE SIGN
SIDE ELEVATION**



**DETAIL OF
SIGN ATTACHEMENT**



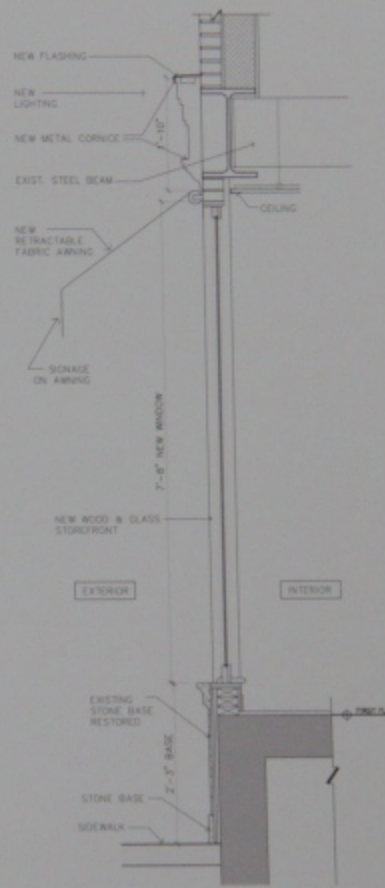
1 PROPOSED SIDE ELEVATION

5 WEST 8TH STREET NEW YORK, N.Y.

LPC-10



1 PROPOSED PARTIAL ELEVATION



2 PROPOSED STORE FRONT SECTION TYP.



3 PROPOSED SERVICE DOOR SECTION

5 WEST 8TH STREET NEW YORK, N.Y.

LPC-9