



WEST ELEVATION - PROPOSED  
SCALE: 1/16" = 1'-0"



GREENWICH VILLAGE HISTORIC DISTRICT  
NOT TO SCALE



IMAGE 1 - 1940 TAX ID PHOTO - 39 5th AVENUE



IMAGE 2 - EXISTING VIEW OF 39 5th AVENUE  
FLOORS 15-17 NOT VISIBLE

**39 5th AVENUE, PENTHOUSE**  
NEW YORK, NY 10003

MICHAEL HAVERLAND ARCHITECT, P.C.  
ONE UNION SQUARE WEST, #808  
NEW YORK, NY, 10003

**SITE AND TAX PHOTO**  
LANDMARKS PRESERVATION COMMISSION HEARING

OCTOBER 15, 2012  
SCALE: AS NOTED  
BOARD 1 OF 9



IMAGE 1 - VIEW FROM 11TH ST LOOKING WEST  
NEW WINDOWS PARTIALLY VISIBLE

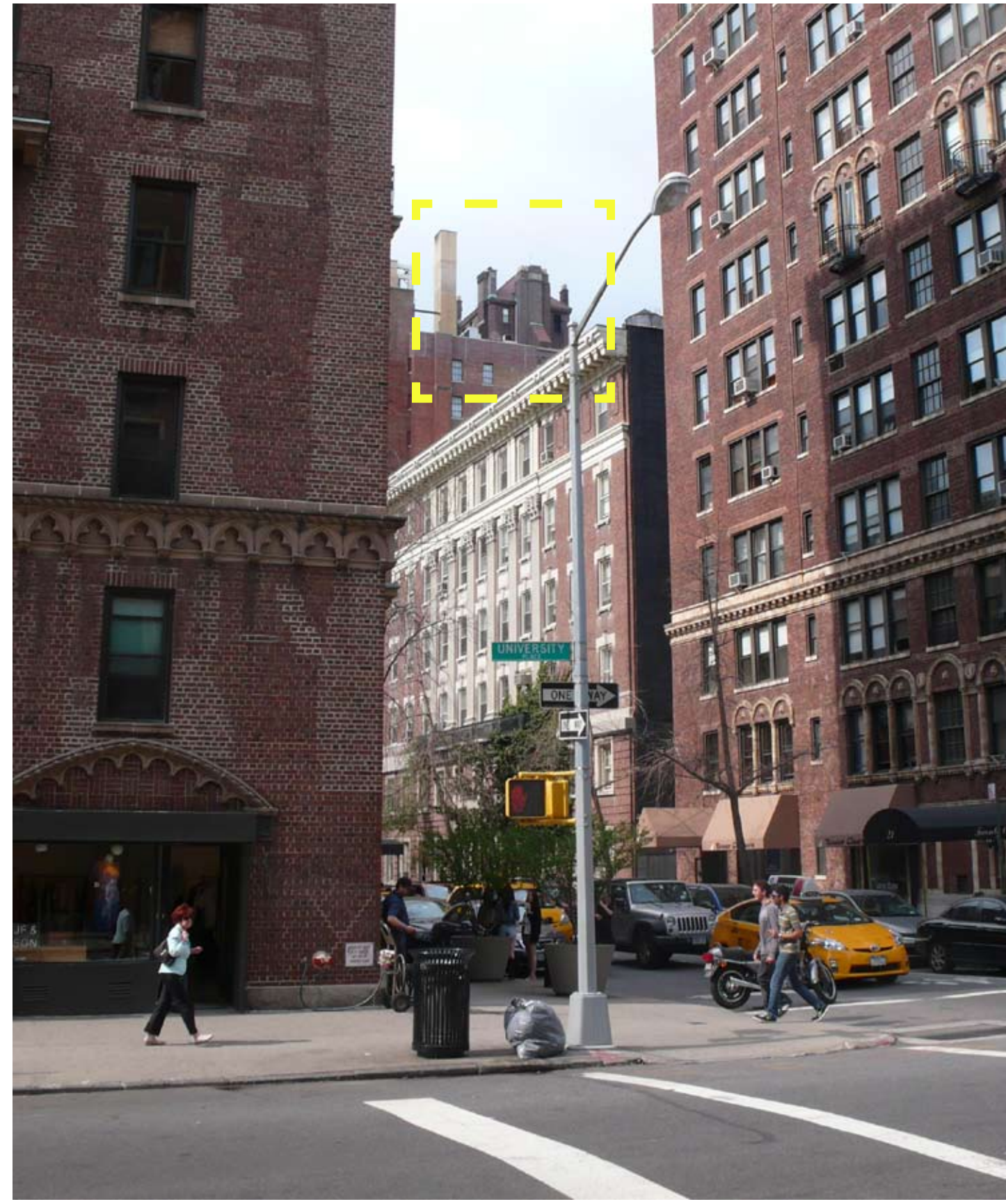


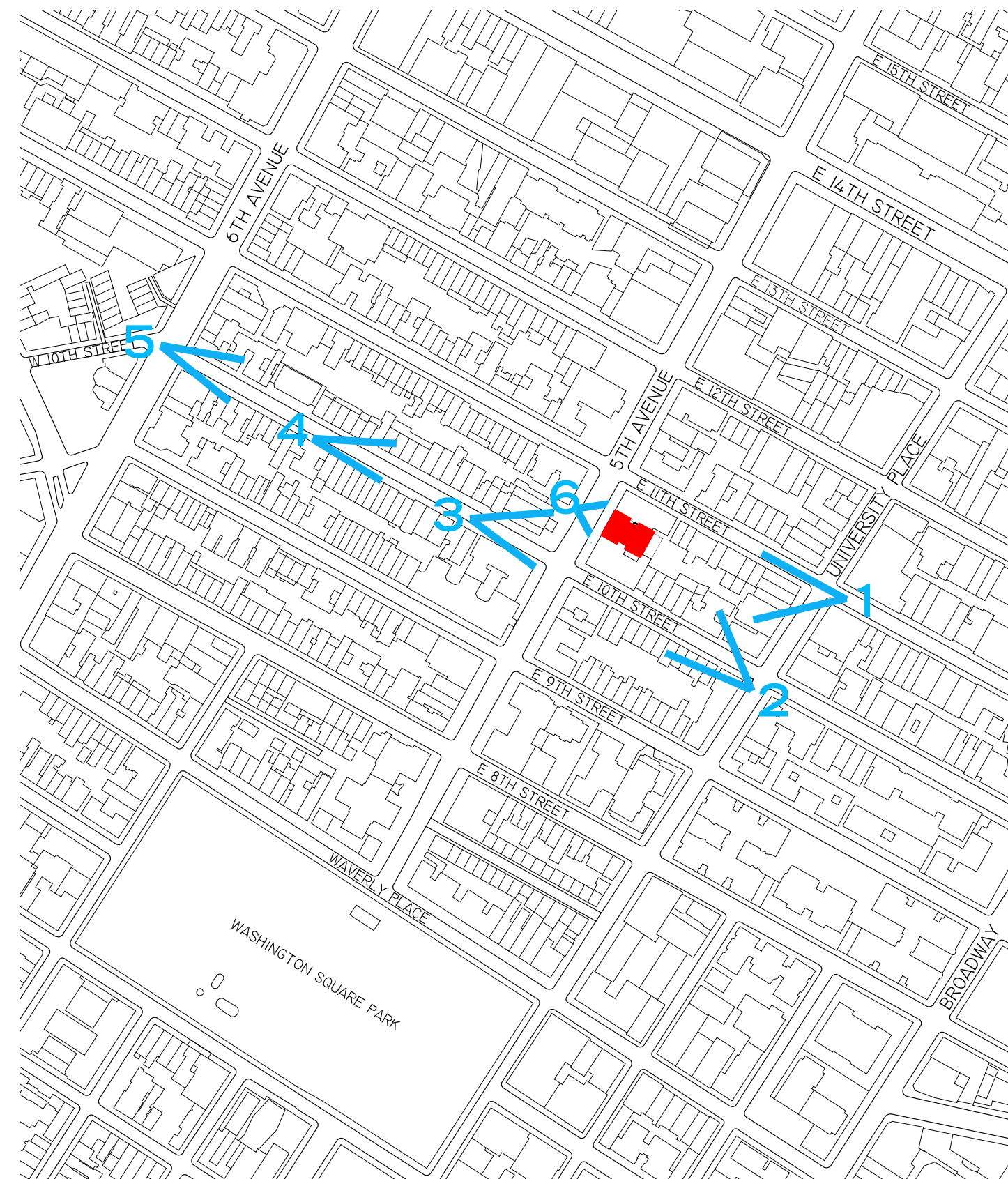
IMAGE 2 - VIEW FROM 10TH AND UNIVERSITY  
NEW WINDOWS PARTIALLY VISIBLE



IMAGE 3 - VIEW FROM 10TH ST LOOKING EAST  
NEW WINDOWS PARTIALLY VISIBLE



IMAGE 6 - VIEW FROM 5TH AVE LOOKING EAST  
NEW WINDOWS NOT VISIBLE



KEY PLAN - 39 5TH AVENUE  
SCALE: 1:3000



IMAGE 4 - VIEW FROM 10TH ST LOOKING EAST  
NEW WINDOWS PARTIALLY VISIBLE



IMAGE 5 - VIEW FROM 10TH ST AND 6TH AVE  
NEW WINDOWS PARTIALLY VISIBLE

**39 5th AVENUE, PENTHOUSE**  
NEW YORK, NY 10003

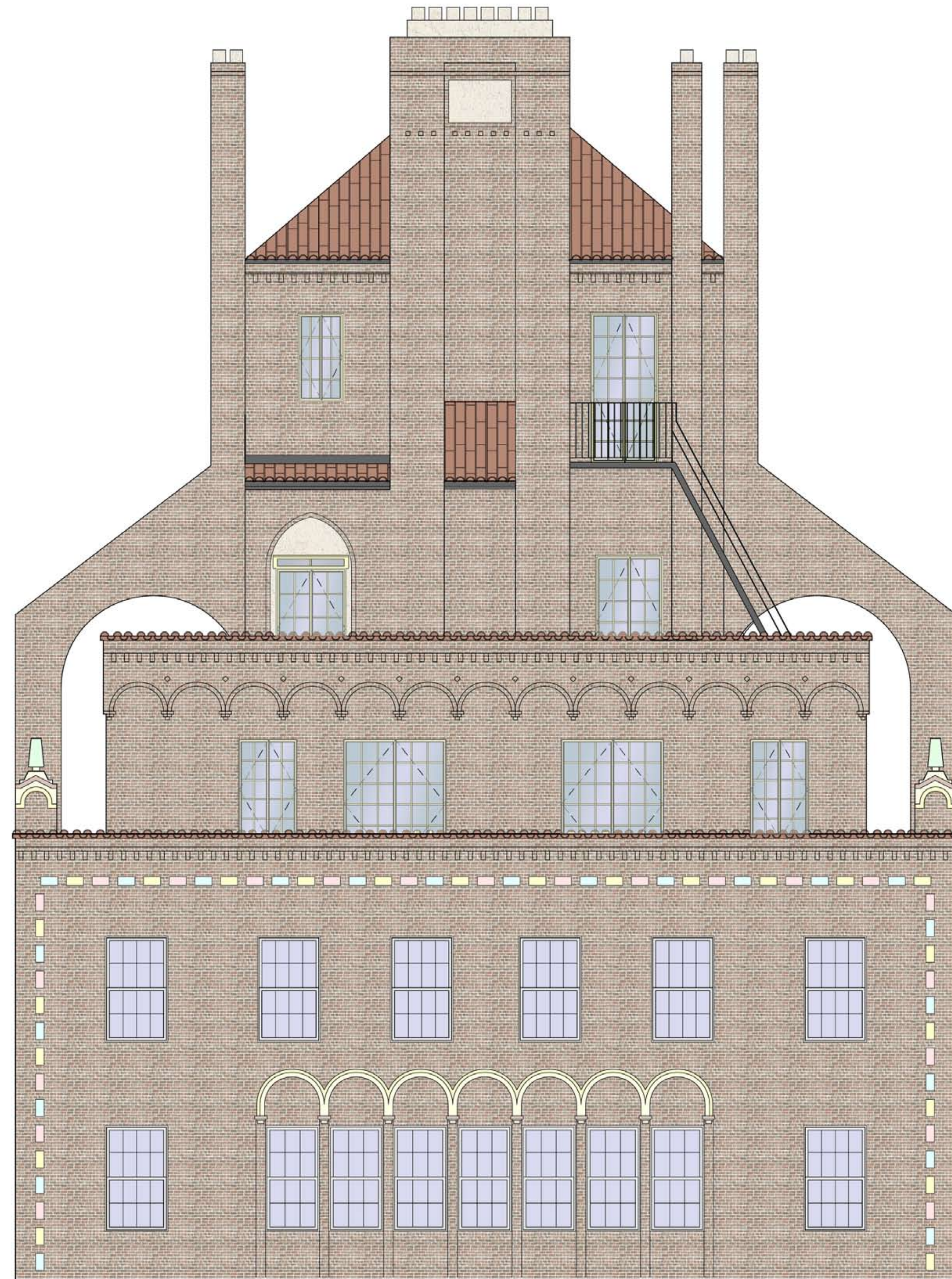
MICHAEL HAVERLAND ARCHITECT, P.C.  
ONE UNION SQUARE WEST, #808  
NEW YORK, NY, 10003

**SITE PHOTOS**  
LANDMARKS PRESERVATION COMMISSION HEARING

OCTOBER 15, 2012  
SCALE: AS NOTED  
BOARD 2 OF 9



EXISTING WEST ELEVATION  
SCALE: NOT TO SCALE



PROPOSED WEST ELEVATION  
SCALE: NOT TO SCALE

39 5th AVENUE, PENTHOUSE  
NEW YORK, NY 10003

MICHAEL HAVERLAND ARCHITECT, P.C.  
ONE UNION SQUARE WEST, #808  
NEW YORK, NY, 10003

WEST ELEVATION COMPARISON  
LANDMARKS PRESERVATION COMMISSION HEARING

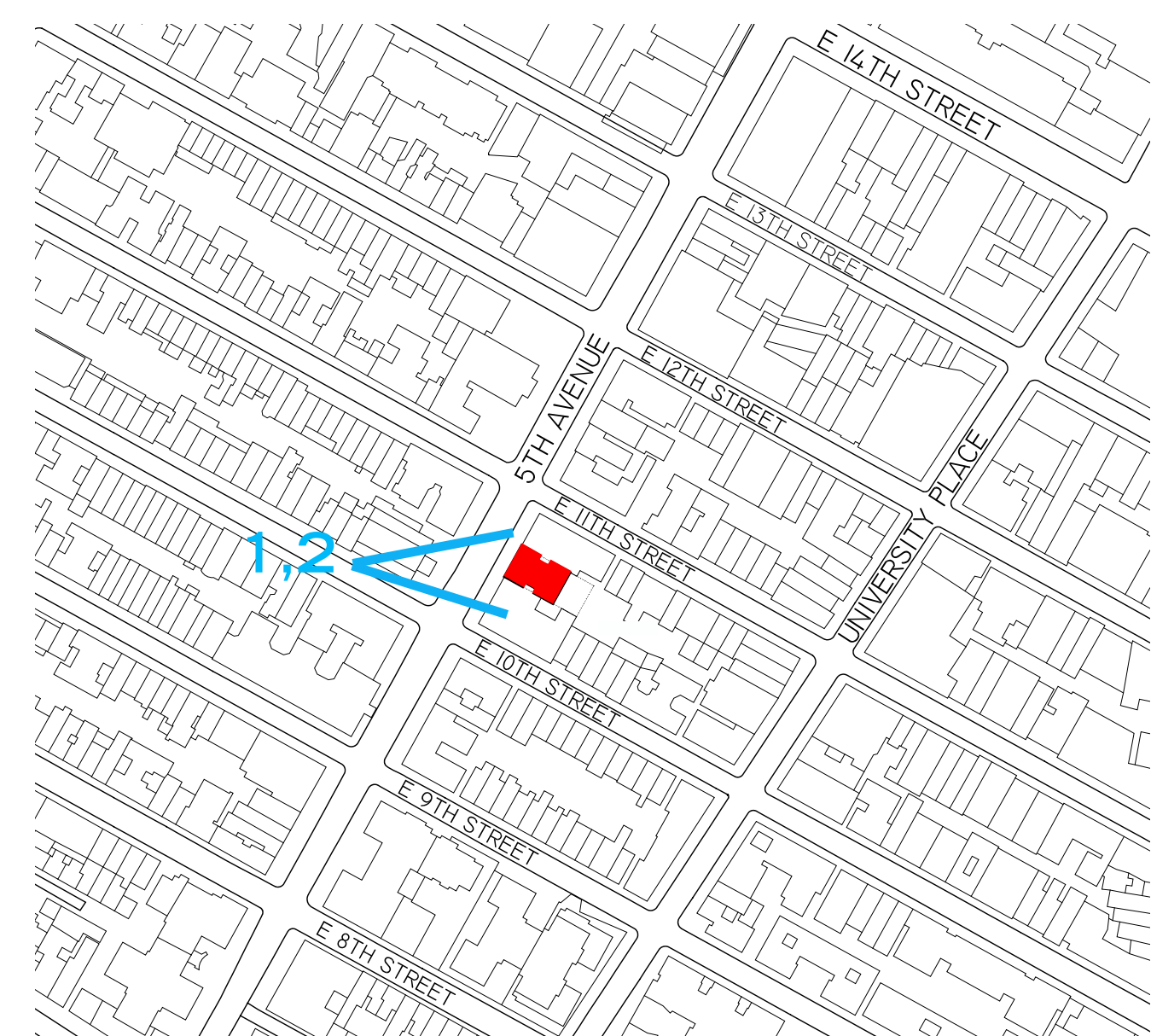
OCTOBER 15, 2012  
SCALE: AS NOTED  
BOARD 3 OF 9



IMAGE 1 - EXISTING VIEW FROM 10TH ST LOOKING EAST  
 PHOTO COURTESY OF SANDY CHUNG - LANDMARKS PRESERVATION COMMISSION



IMAGE 1A - RENDERING OF PROPOSED STEEL WINDOWS AND DOORS



KEY PLAN - 39 5th AVENUE  
 SCALE: 1:3000



IMAGE 2 - EXISTING VIEW FROM 10TH ST LOOKING EAST  
 PHOTO COURTESY OF SANDY CHUNG - LANDMARKS PRESERVATION COMMISSION

39 5th AVENUE, PENTHOUSE  
 NEW YORK, NY 10003

MICHAEL HAVERLAND ARCHITECT, P.C.  
 ONE UNION SQUARE WEST, #808  
 NEW YORK, NY, 10003

SITE PHOTOS AND PROPOSED RENDERING  
 LANDMARKS PRESERVATION COMMISSION HEARING

OCTOBER 15, 2012  
 SCALE: AS NOTED  
 BOARD 4 OF 9



EXISTING EAST ELEVATION  
SCALE: NOT TO SCALE



PROPOSED EAST ELEVATION  
SCALE: NOT TO SCALE

39 5th AVENUE, PENTHOUSE  
NEW YORK, NY 10003

MICHAEL HAVERLAND ARCHITECT, P.C.  
ONE UNION SQUARE WEST, #808  
NEW YORK, NY, 10003

EAST ELEVATION COMPARISON  
LANDMARKS PRESERVATION COMMISSION HEARING

OCTOBER 15, 2012  
SCALE: AS NOTED  
BOARD 5 OF 9



EXISTING NORTH ELEVATION  
SCALE: NOT TO SCALE



PROPOSED NORTH ELEVATION  
SCALE: NOT TO SCALE

39 5th AVENUE, PENTHOUSE  
NEW YORK, NY 10003

MICHAEL HAVERLAND ARCHITECT, P.C.  
ONE UNION SQUARE WEST, #808  
NEW YORK, NY, 10003

NORTH ELEVATION COMPARISON  
LANDMARKS PRESERVATION COMMISSION HEARING

OCTOBER 15, 2012  
SCALE: AS NOTED  
BOARD 6 OF 9



EXISTING SOUTH ELEVATION  
SCALE: NOT TO SCALE



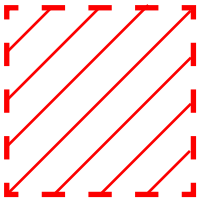
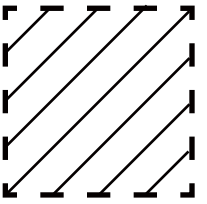
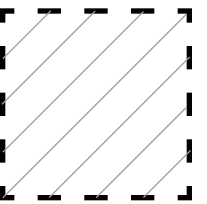
PROPOSED SOUTH ELEVATION  
SCALE: NOT TO SCALE

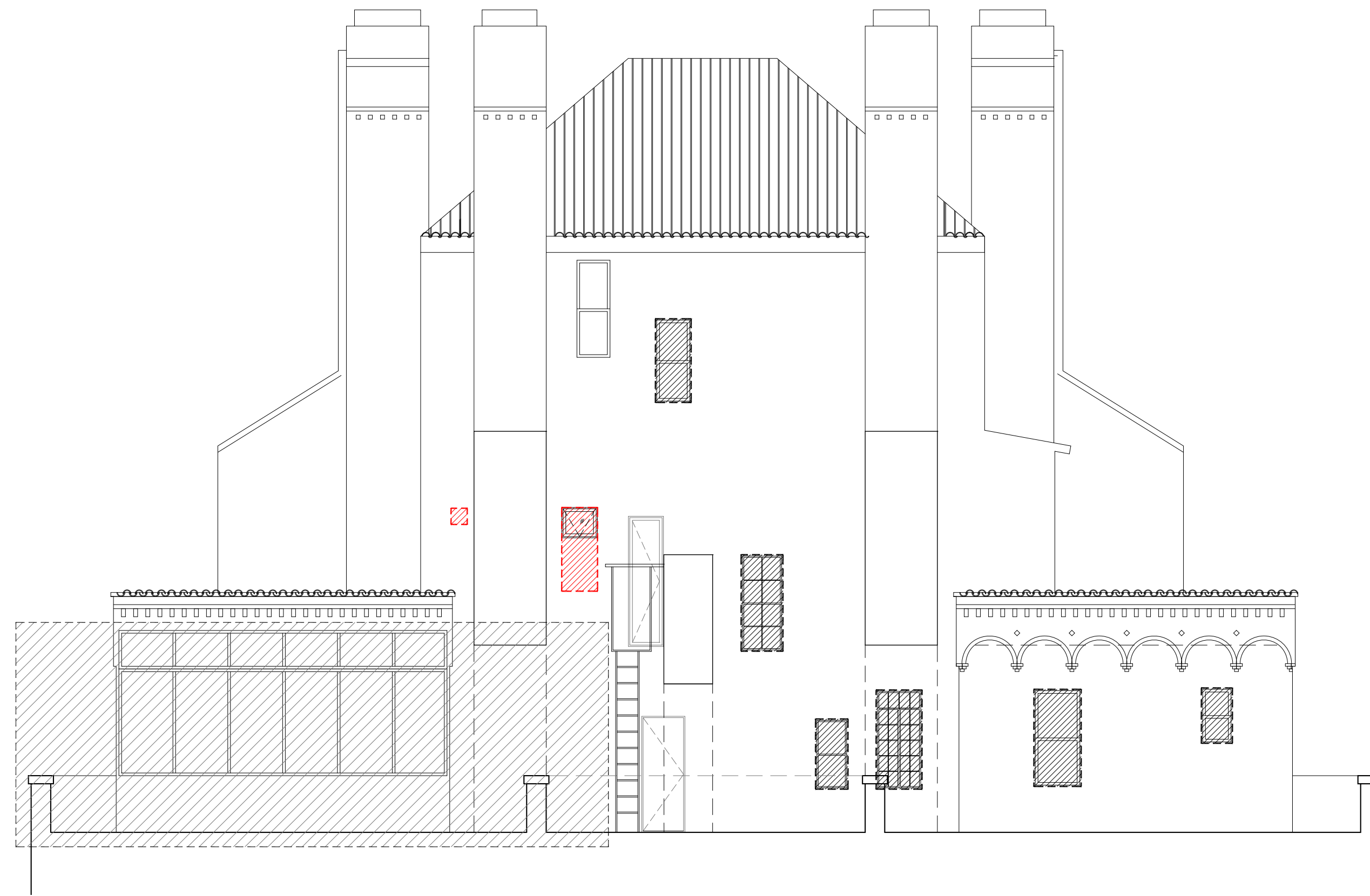
39 5th AVENUE, PENTHOUSE  
NEW YORK, NY 10003

MICHAEL HAVERLAND ARCHITECT, P.C.  
ONE UNION SQUARE WEST, #808  
NEW YORK, NY, 10003

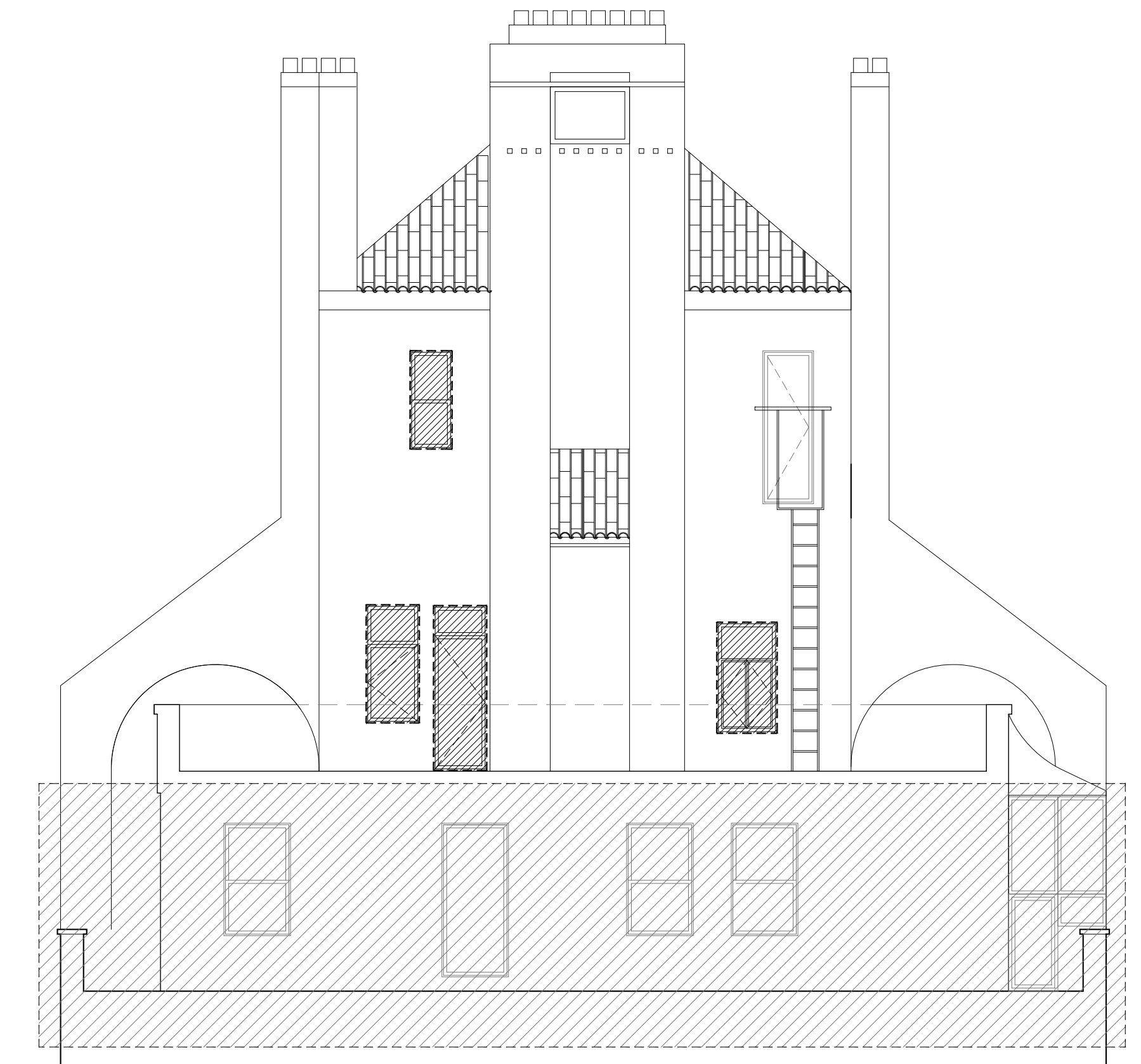
SOUTH ELEVATION COMPARISON  
LANDMARKS PRESERVATION COMMISSION HEARING

OCTOBER 15, 2012  
SCALE: AS NOTED  
BOARD 7 OF 9

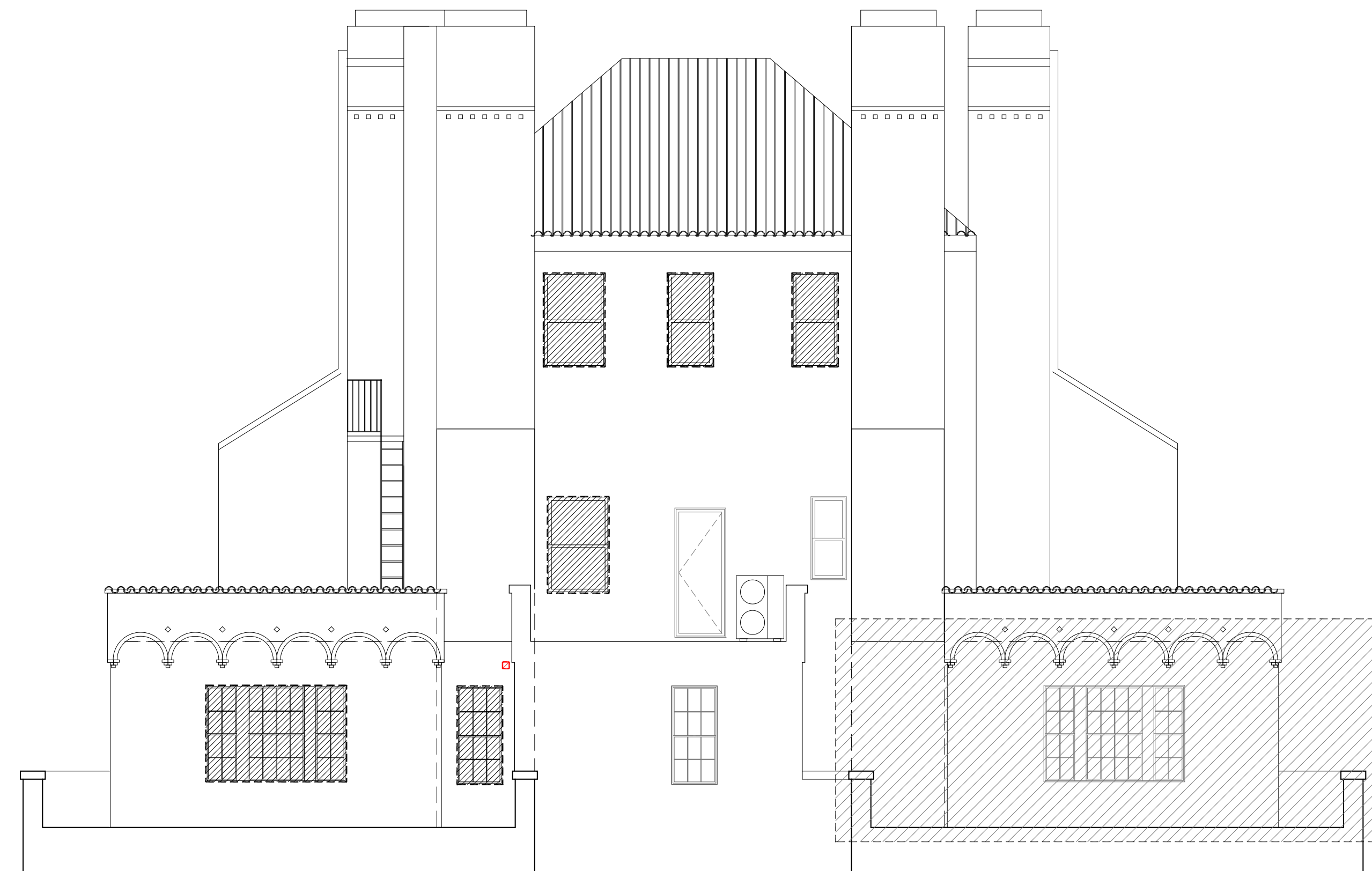
- KEY**
-  NEW STEEL WINDOW/DOOR ON ENLARGED OPENING
  -  NEW STEEL WINDOW/DOOR ON EXISTING OPENING
  -  NEIGHBORING APARTMENT/ NO WORK



EXISTING NORTH ELEVATION  
SCALE: NOT TO SCALE



EXISTING EAST ELEVATION  
SCALE: NOT TO SCALE



EXISTING SOUTH ELEVATION  
SCALE: NOT TO SCALE



EXISTING WEST ELEVATION  
SCALE: NOT TO SCALE

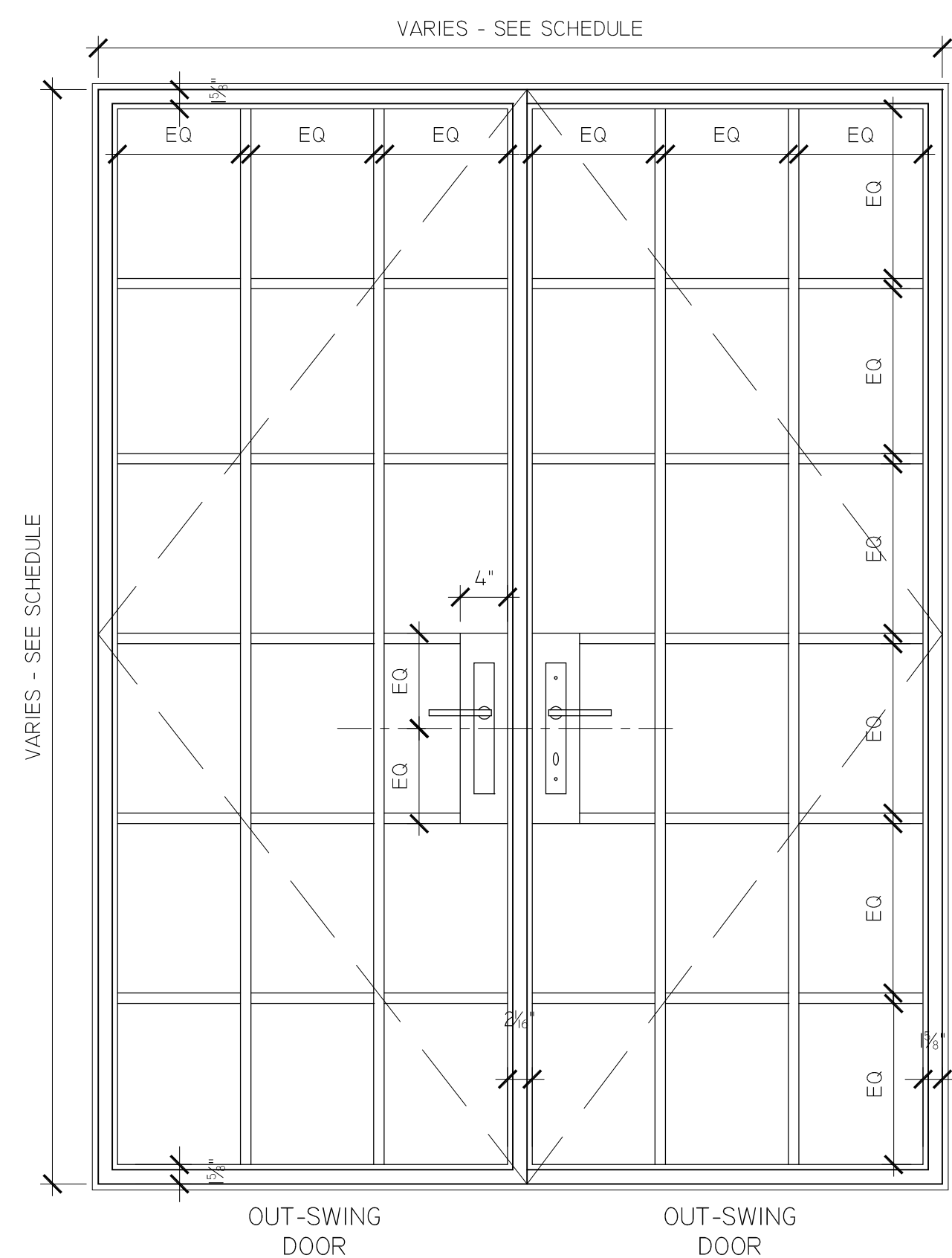
39 5th AVENUE, PENTHOUSE  
NEW YORK, NY 10003

MICHAEL HAVERLAND ARCHITECT, P.C.  
ONE UNION SQUARE WEST, #808  
NEW YORK, NY, 10003

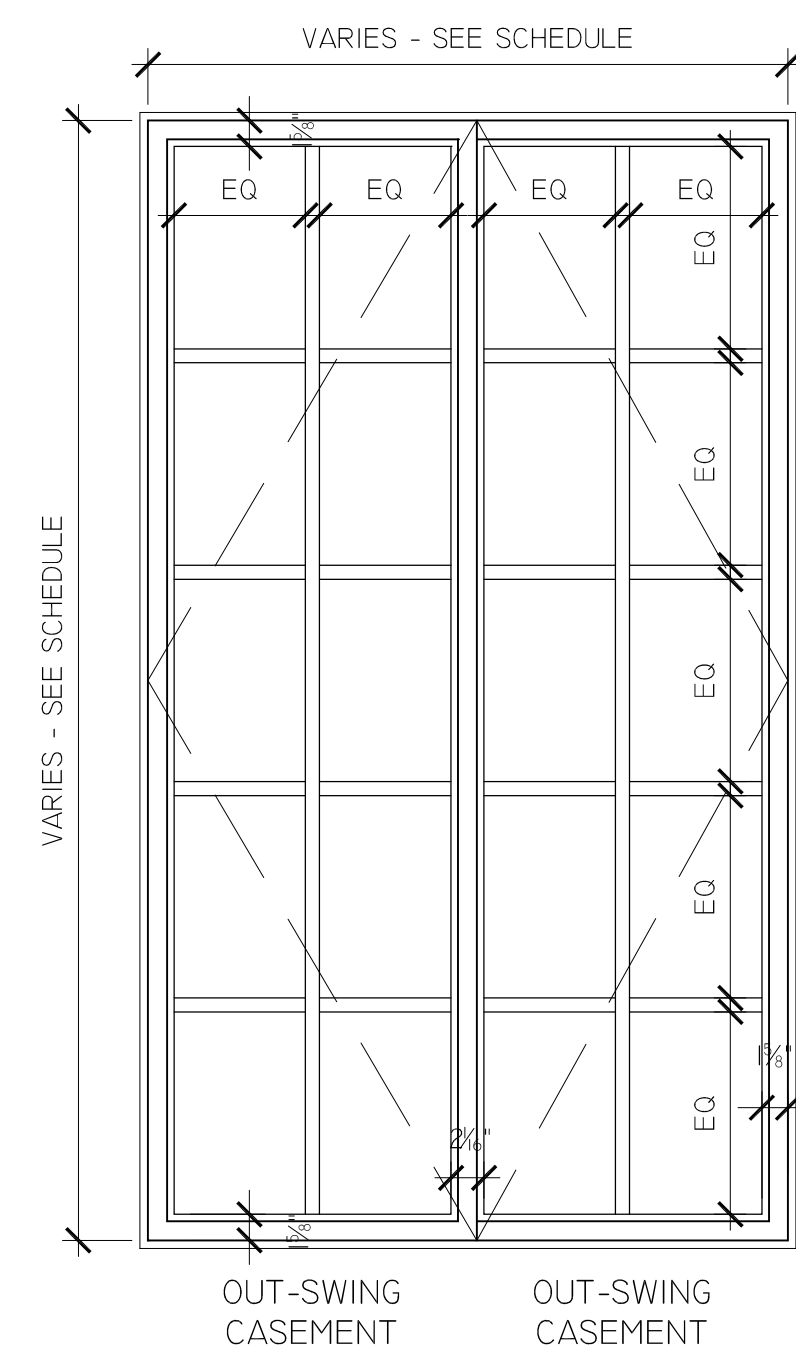
EXISTING ELEVATIONS  
LANDMARKS PRESERVATION COMMISSION HEARING

OCTOBER 15, 2012  
SCALE: AS NOTED  
BOARD 8 OF 9

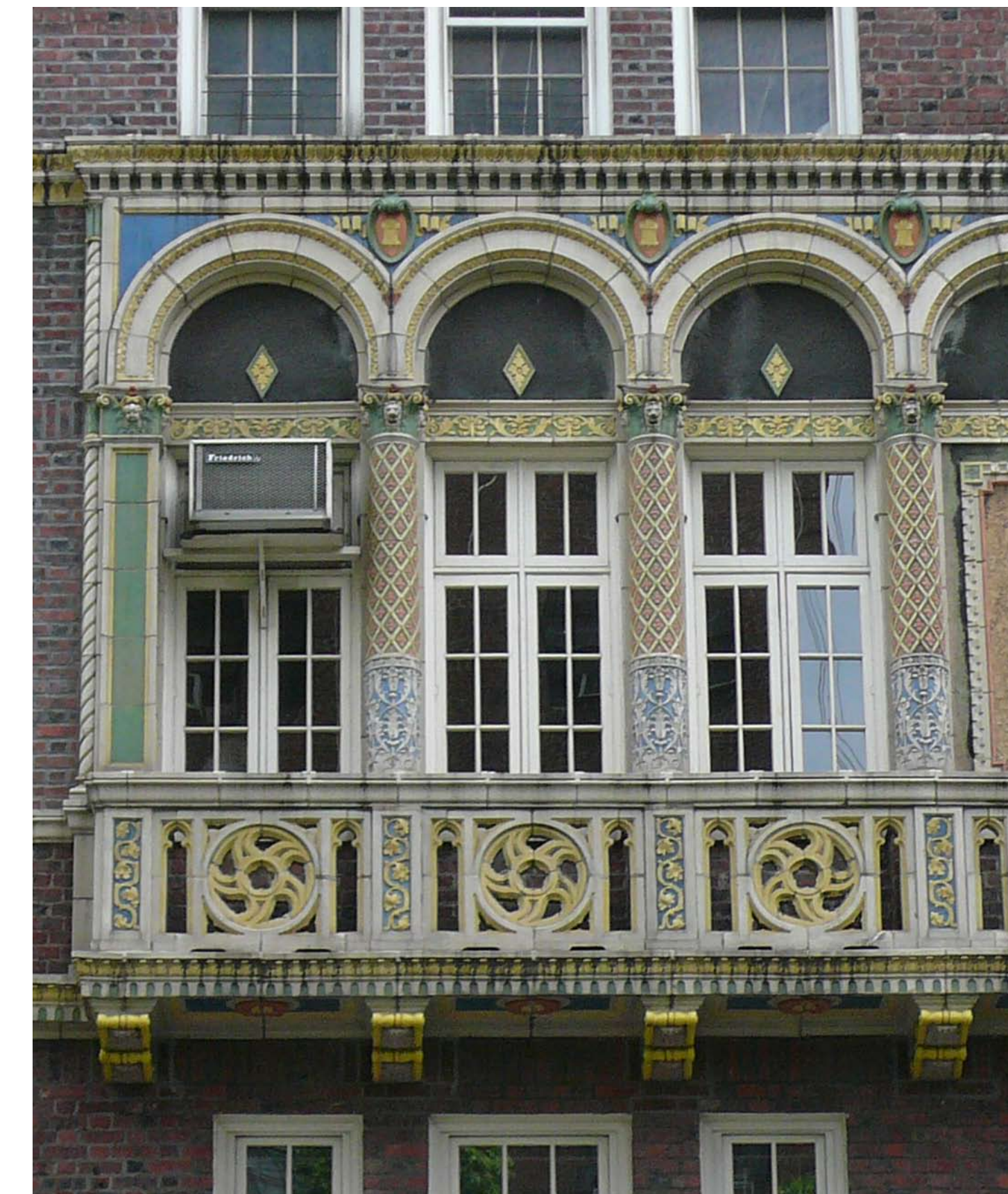




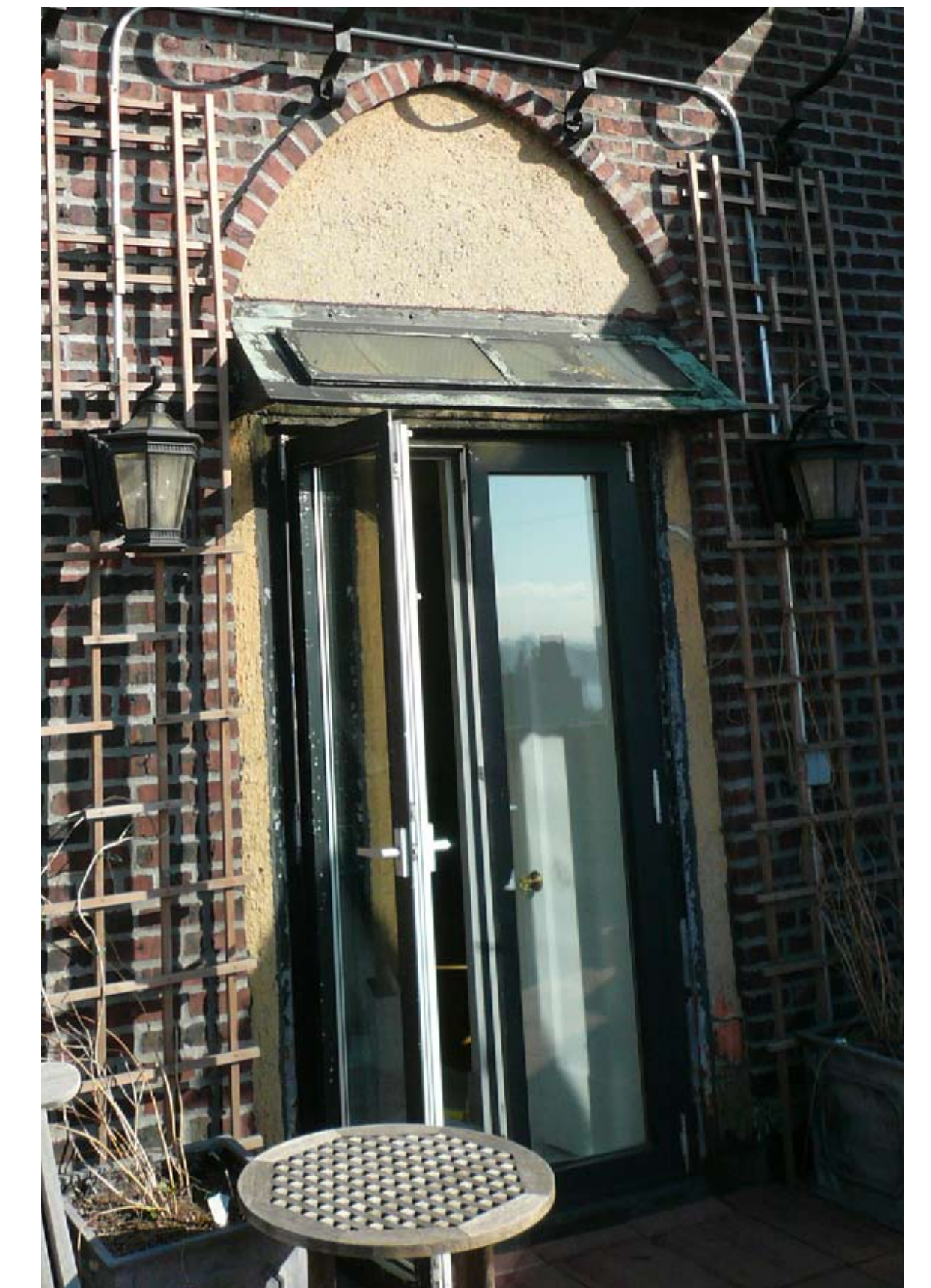
PROPOSED STEEL WINDOW AND DOOR DETAIL ELEVATIONS  
SCALE: 1" = 1'-0"



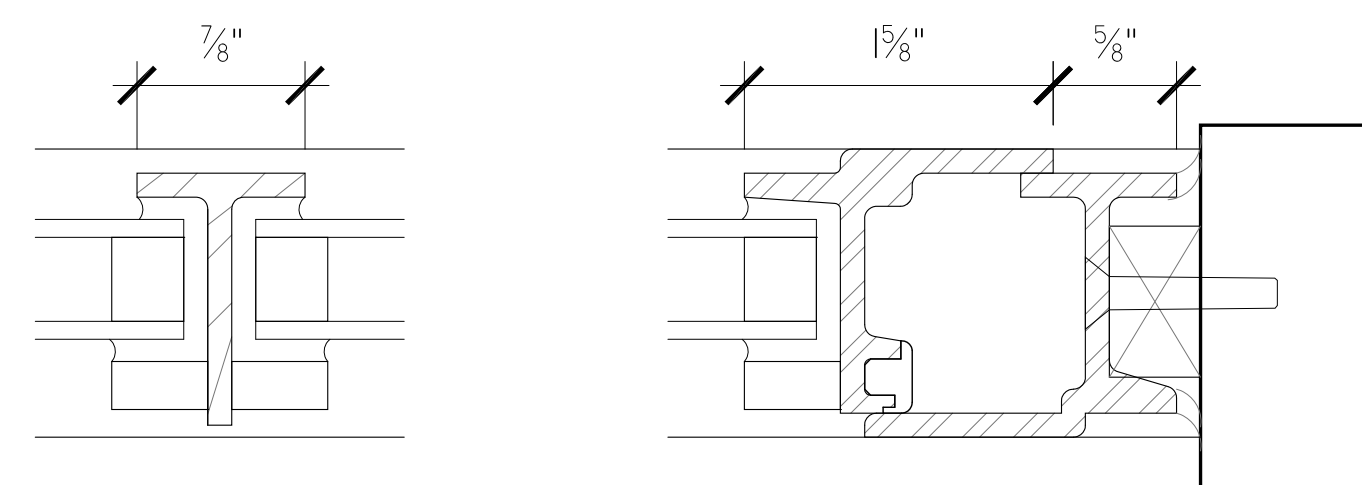
EXISTING WOOD WINDOW  
(TYPICAL TO 1ST-14TH FLOORS)



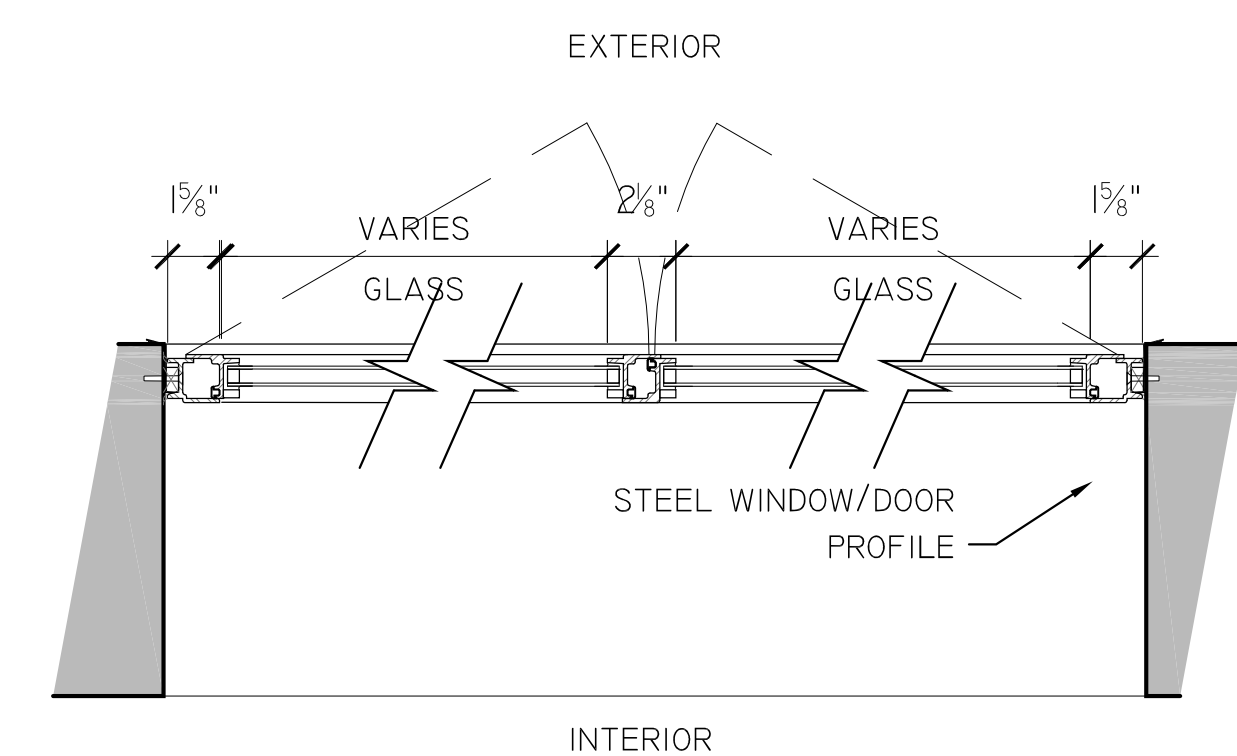
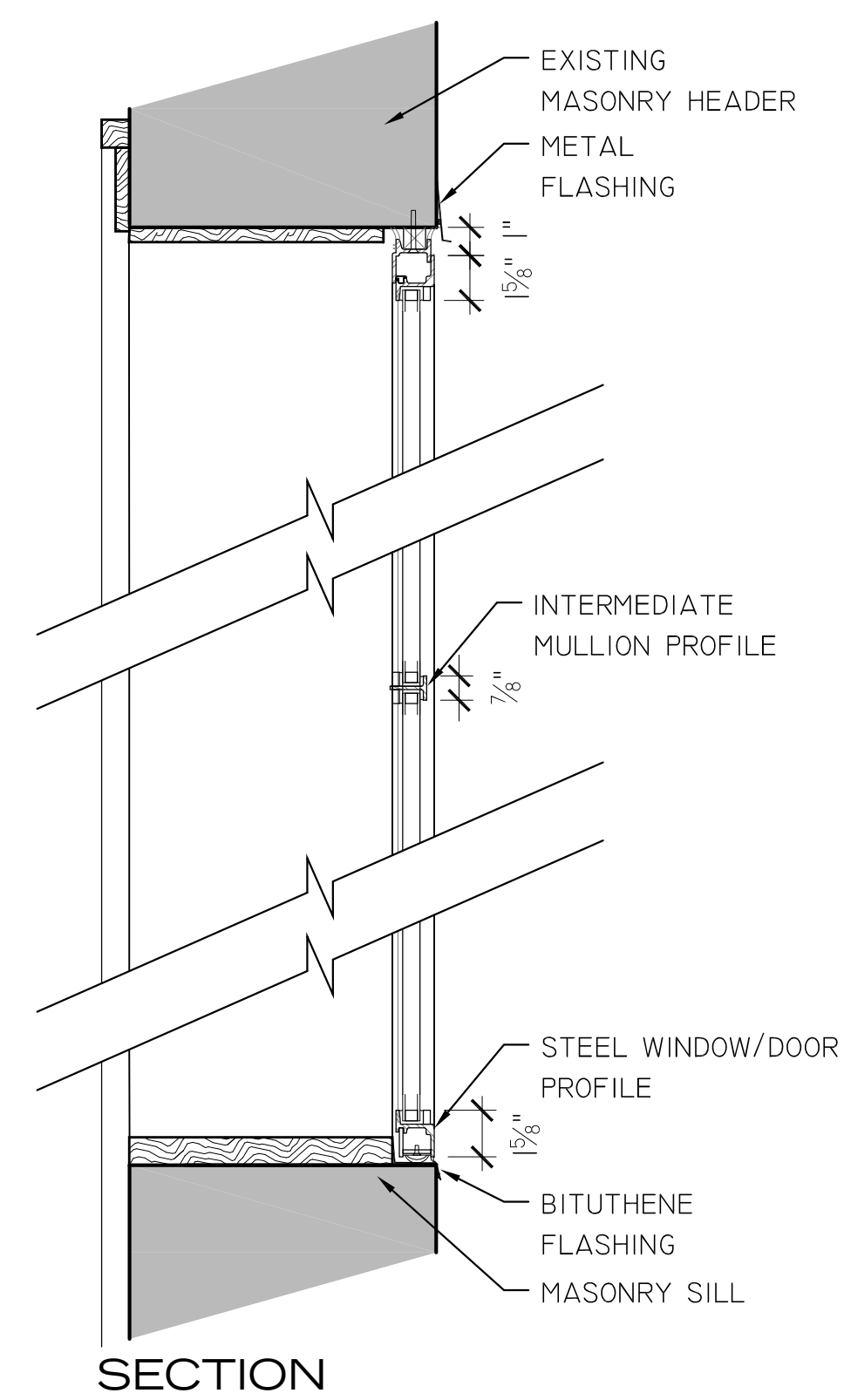
EXISTING 3RD FLOOR CASEMENT WINDOWS  
PRECEDENT FOR PROPOSED DESIGN



EXISTING ALUMINUM DOOR  
(TYPICAL TO 16TH AND 17TH FLOORS)



PROPOSED PROFILE DETAILS  
SCALE: 1'-0" = 1'-0"



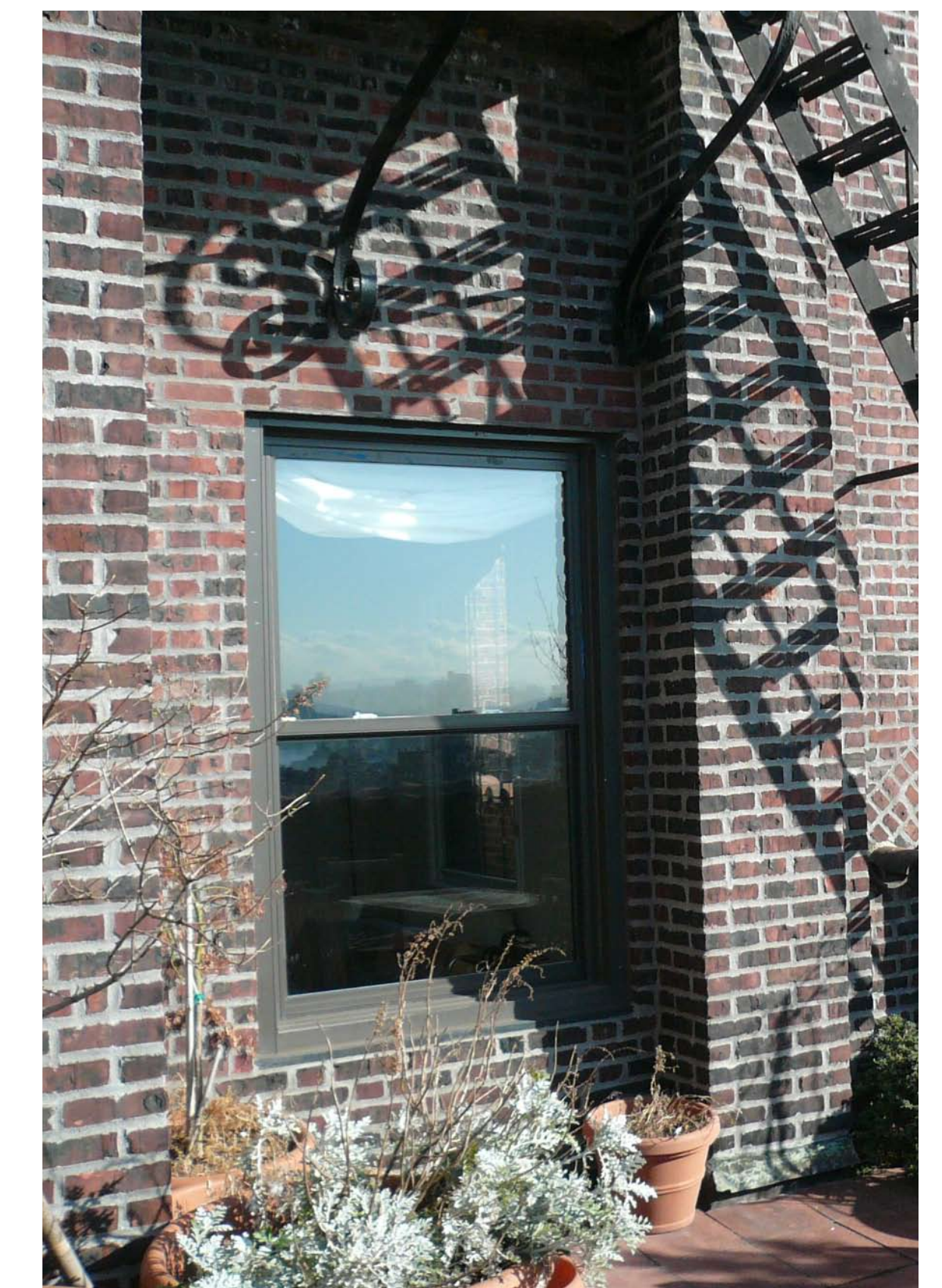
PROPOSED STEEL WINDOW/DOOR DETAILS  
SCALE: 1" = 1'-0"



EXISTING STEEL WINDOW  
(TYPICAL TO 15TH FLOOR)



EXISTING TERRACE DOOR AT 15TH FLOOR  
(EXTERIOR AND INTERIOR VIEWS SHOWN)



EXISTING ALUMINUM WINDOW  
(TYPICAL TO 16TH AND 17TH FLOORS)

39 5th AVENUE, PENTHOUSE  
NEW YORK, NY 10003

MICHAEL HAVERLAND ARCHITECT, P.C.  
ONE UNION SQUARE WEST, #808  
NEW YORK, NY, 10003

EXISTING WINDOW PHOTOS AND PROPOSED DETAILS  
LANDMARKS PRESERVATION COMMISSION HEARING

OCTOBER 15, 2012  
SCALE: AS NOTED  
BOARD 9 OF 9