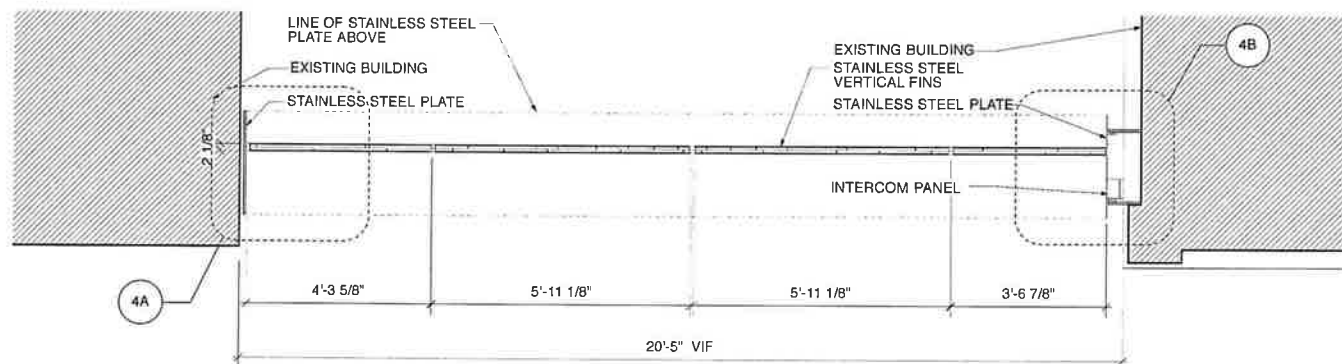
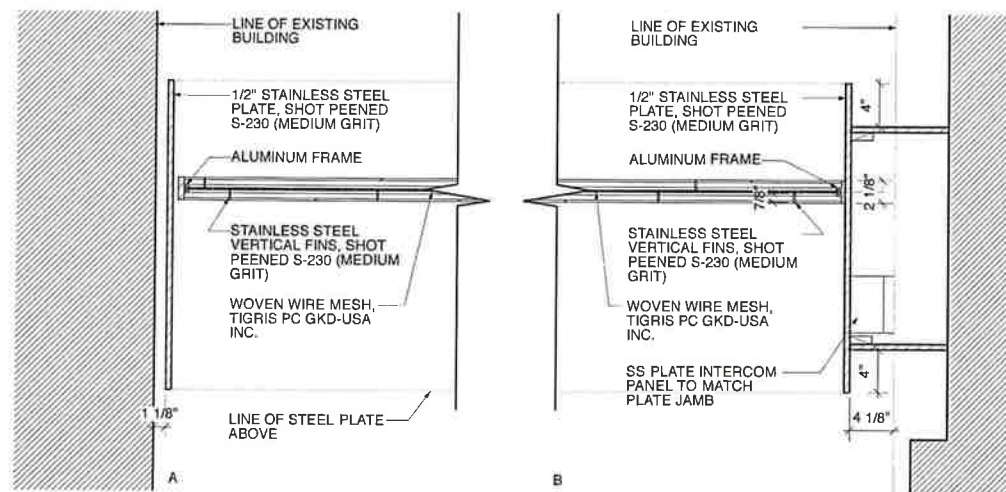


1 1034_GATE 3B_FRONT ELEVATION
Scale: 1/2" = 1'-0"



2 1034_GATE 3B_PLAN
Scale: 1/2" = 1'-0"



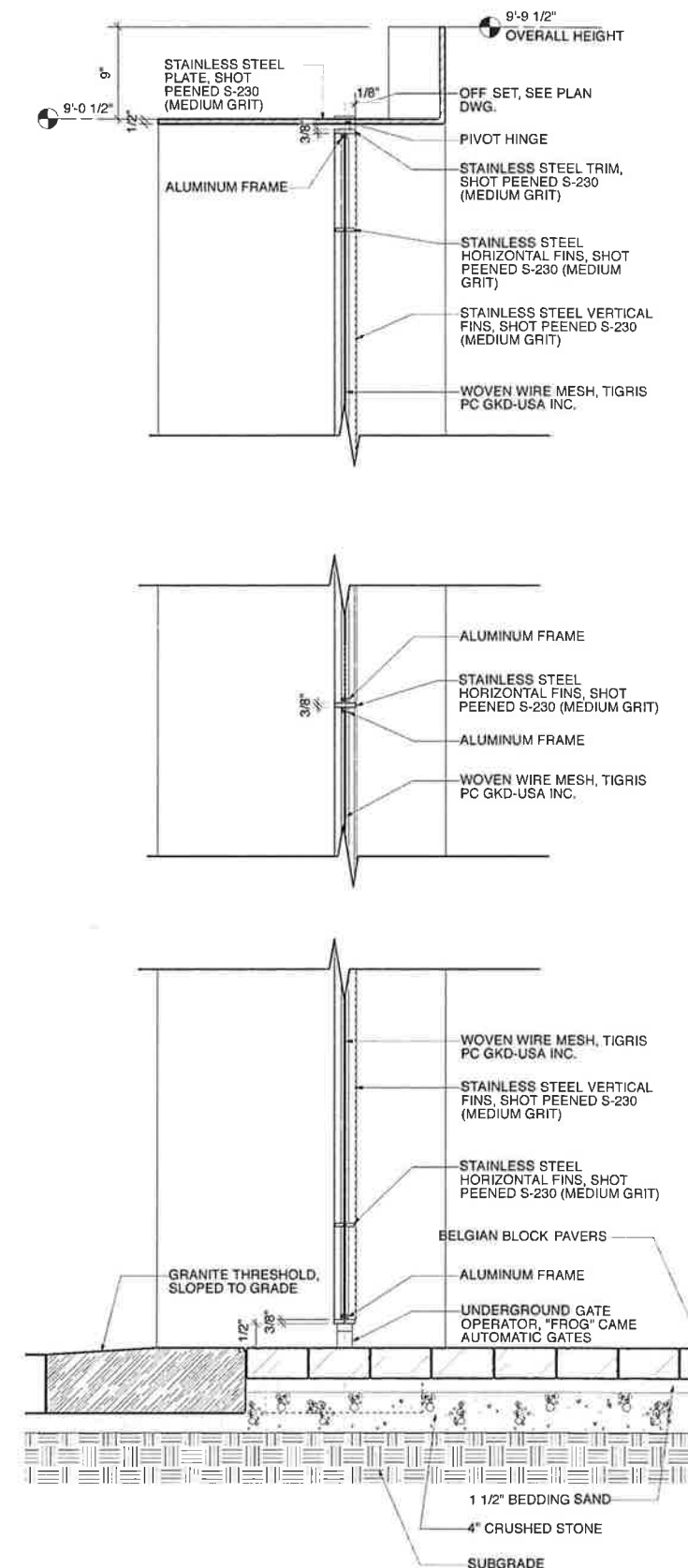
4 1034_GATE 3B_PLAN DETAIL
Scale: 1 1/2" = 1'-0"



5 1034_GATE 3B_EXISTING GATE



6 1034_GATE 3B_PROPOSED GATE

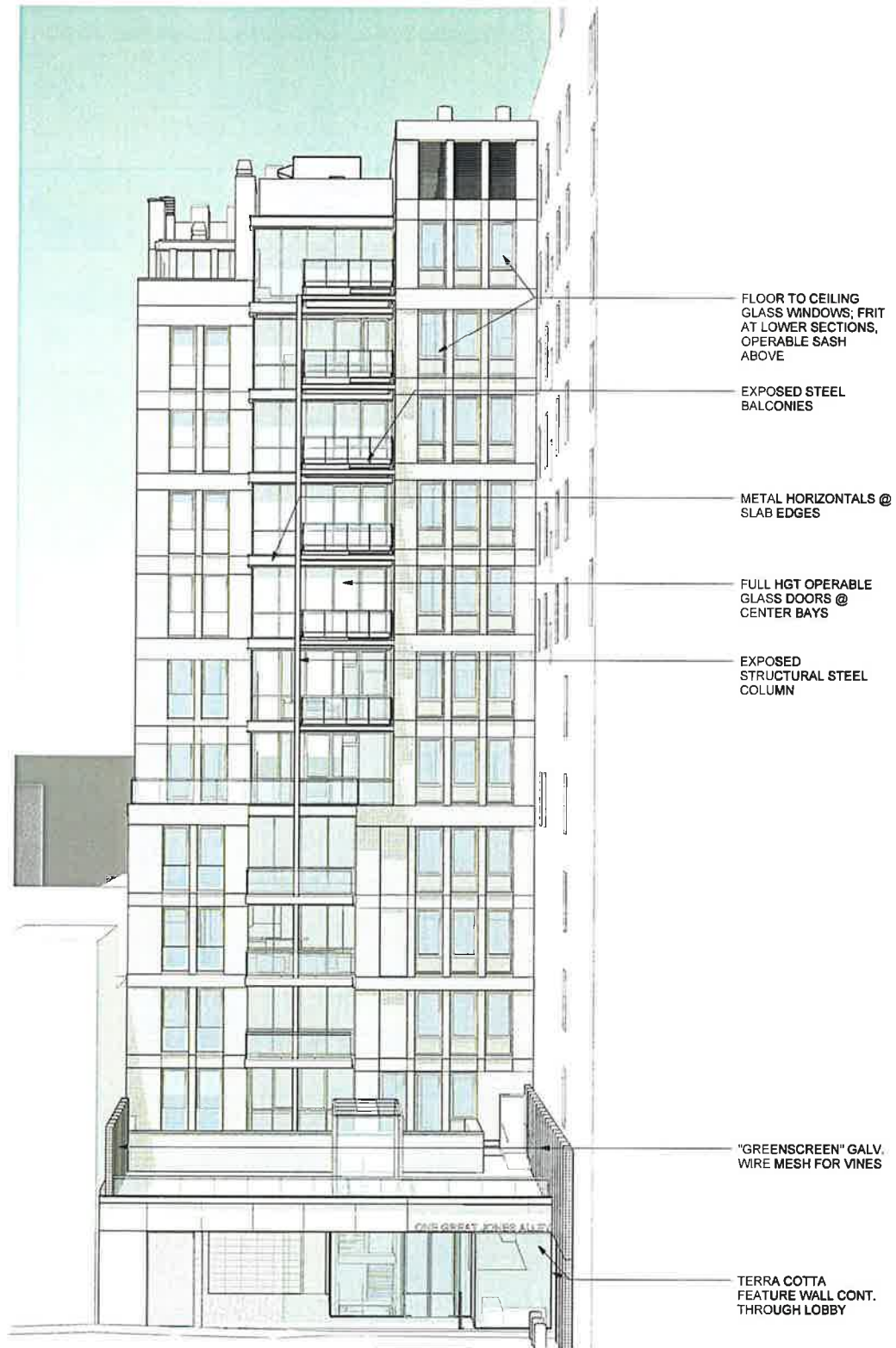


3 1034_GATE 3B_DETAIL SECTION
Scale: 1 1/2" = 1'-0"

ALLEY GATE DETAILS

688 BROADWAY

NEW YORK, NEW YORK, 10012

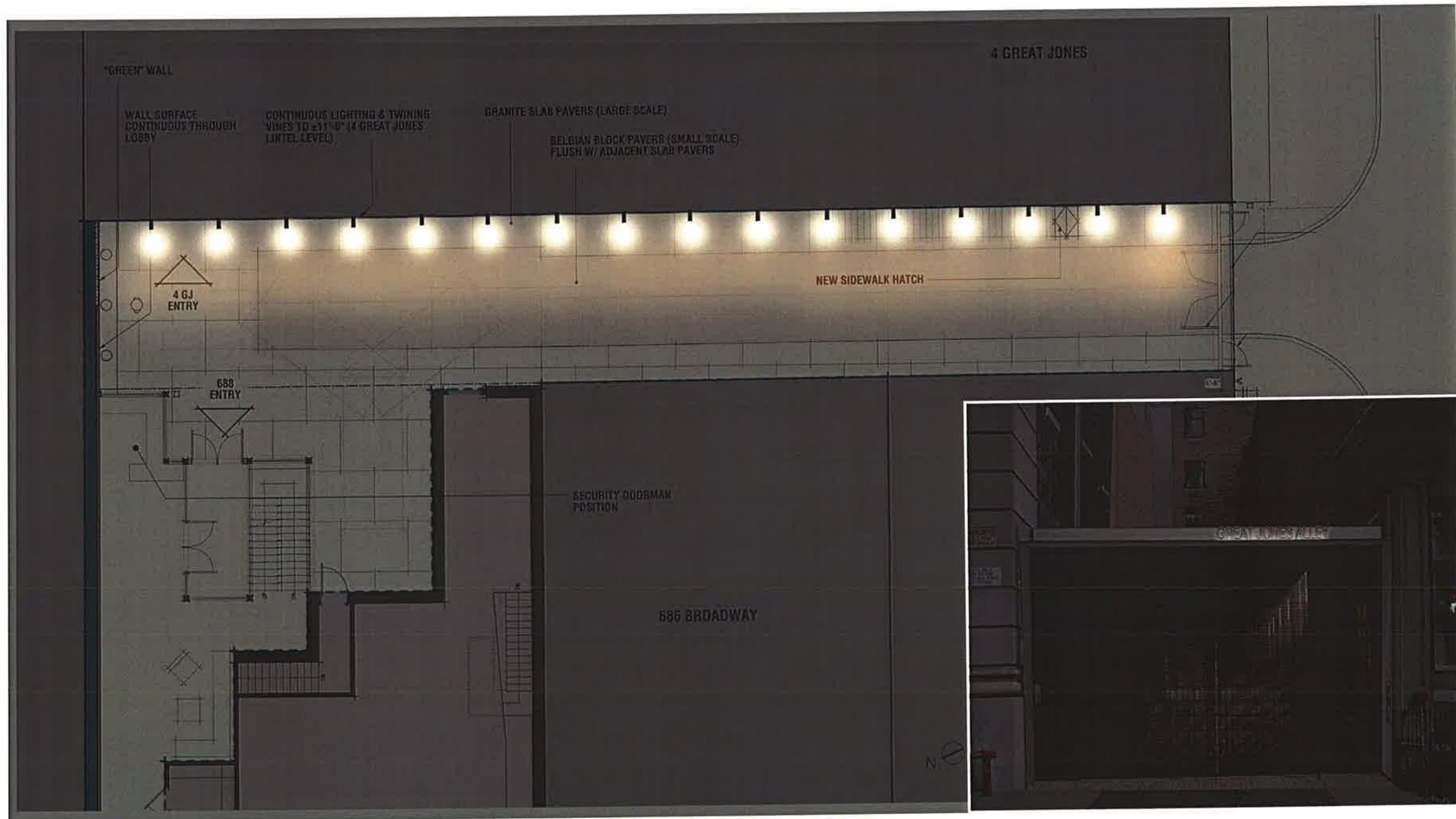


GREAT JONES ALLEY APPROACH AND FACADE STUDY

688 BROADWAY

NEW YORK, NEW YORK, 10012

Project No.: 1034
10/09/2012



PROPOSED ALLEY LIGHTING PLAN

INSET: VIEW OF ALLEY GATE LIGHTING

ALLEY LIGHTING

688 BROADWAY

NEW YORK, NEW YORK, 10012

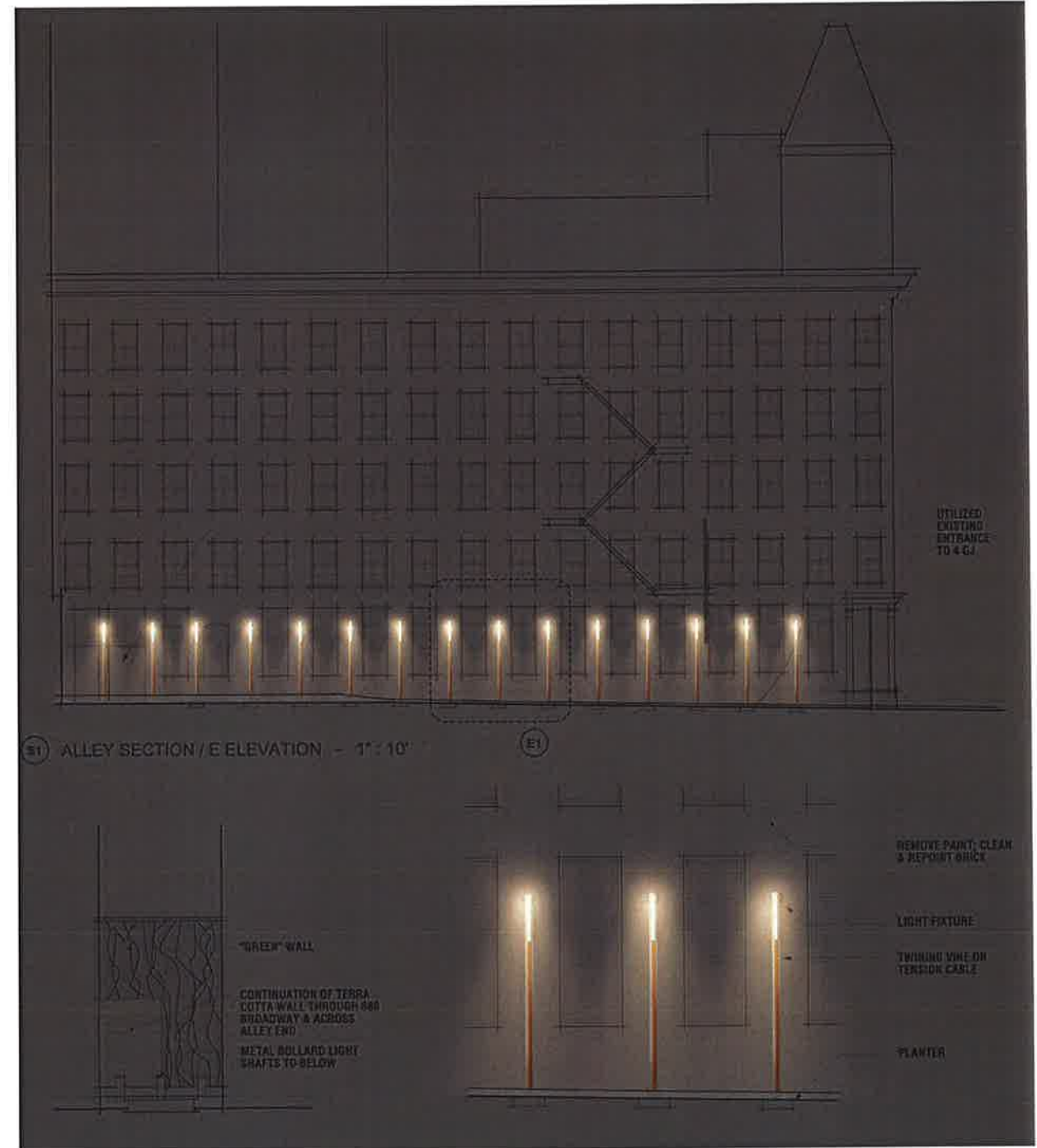
Project No.: 1034
10/09/2012



ALLEY VIEW NORTH



ALLEY VIEW OF RESIDENTIAL LOBBY



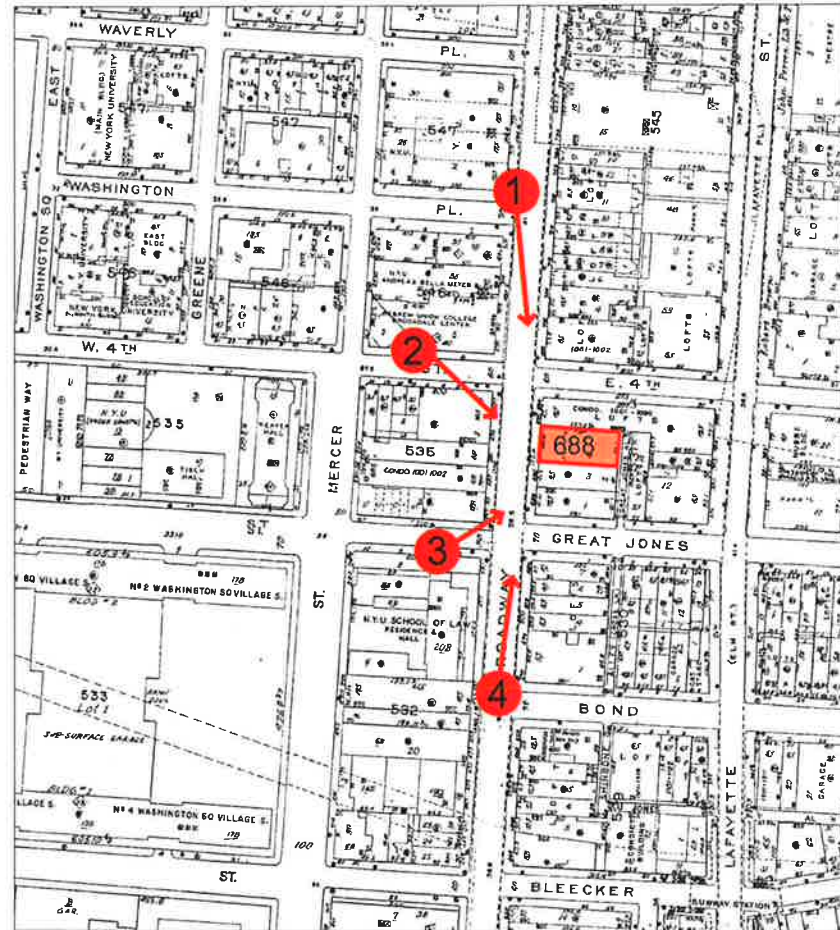
ALLEY LIGHTING ELEVATIONS

ALLEY LIGHTING

688 BROADWAY

NEW YORK, NEW YORK, 10012

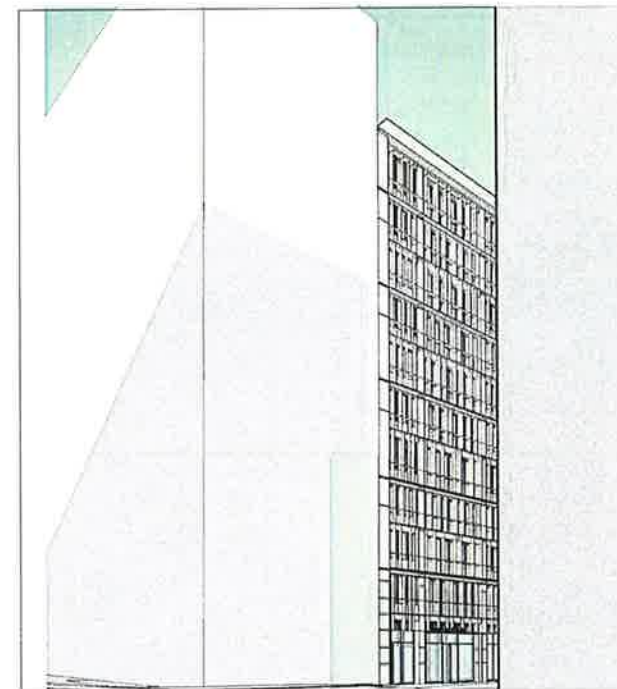
Project No.: 1034
10/09/2012



VIEW LOCATION PLAN



1. VIEW FROM NORTH - S.W. CORNER OF WASHINGTON PL. & BROADWAY
PROPOSED & EXISTING



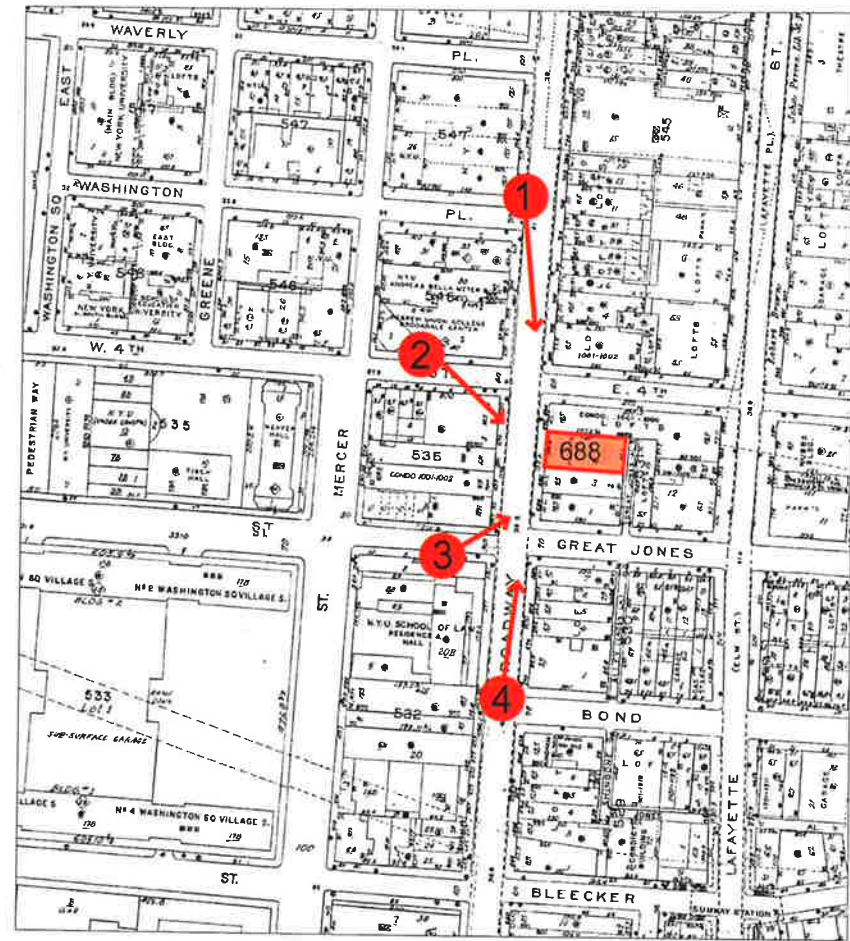
2. VIEW FROM NORTH - N.W. CORNER OF EAST 4TH ST. & BROADWAY
PROPOSED & EXISTING



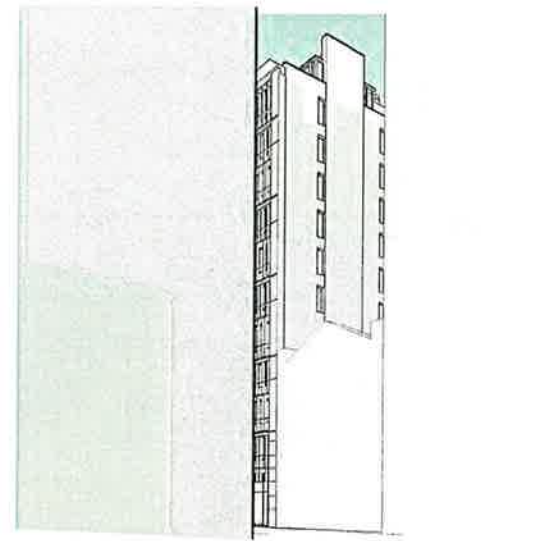
VIEW STUDIES

688 BROADWAY

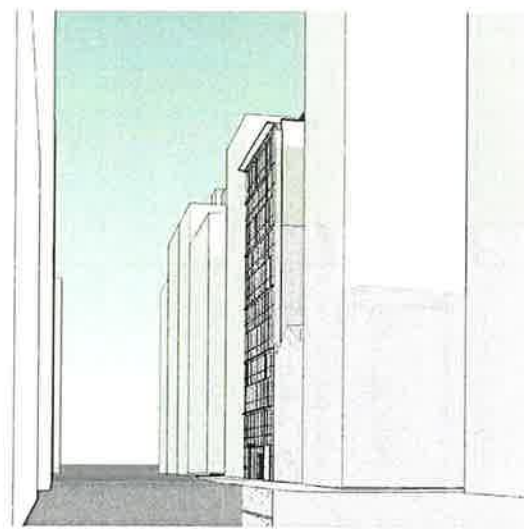
NEW YORK, NEW YORK, 10012



VIEW LOCATION PLAN



3. VIEW FROM SOUTH - S.W. CORNER OF GREAT JONES ST. & BROADWAY PROPOSED & EXISTING



4. VIEW FROM SOUTH - N.W. CORNER OF BOND ST. & BROADWAY PROPOSED & EXISTING

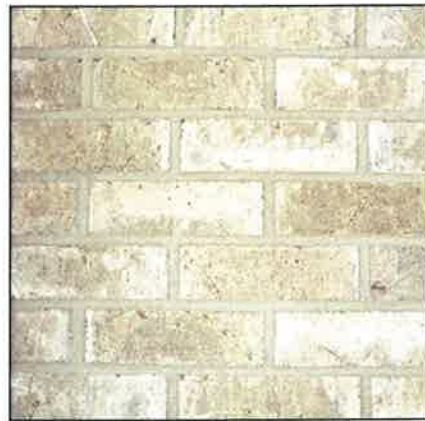


VIEW STUDIES

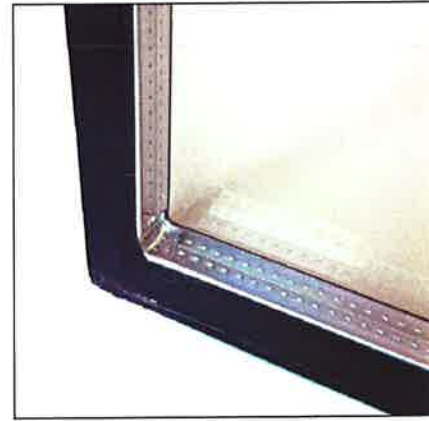
688 BROADWAY

NEW YORK, NEW YORK, 10012

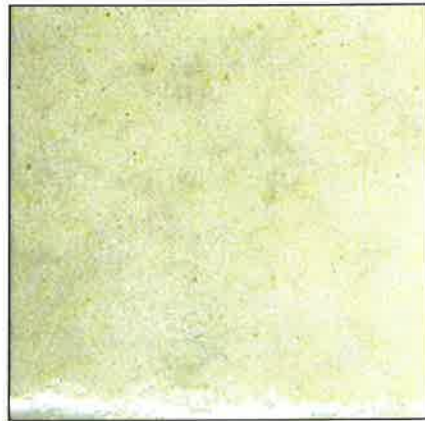
BUILDING MATERIALS



1. BRICK



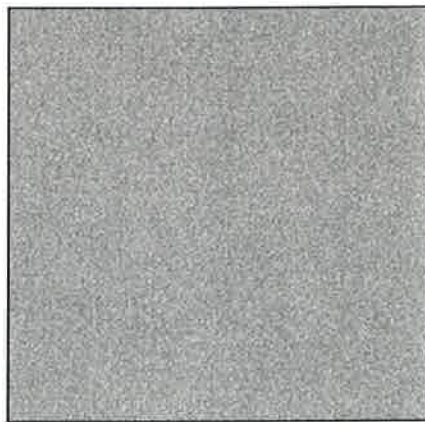
4. GLASS (CLEAR)



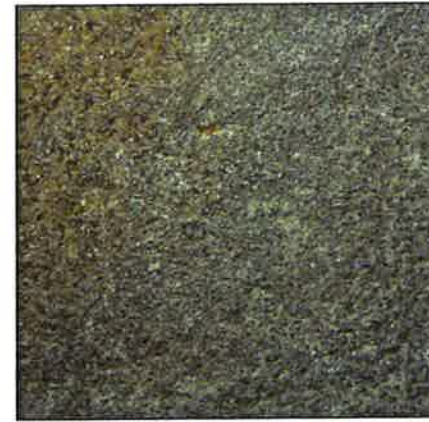
2. TERRA COTTA



5. GLASS (FRIT)



3. ALUMINUM

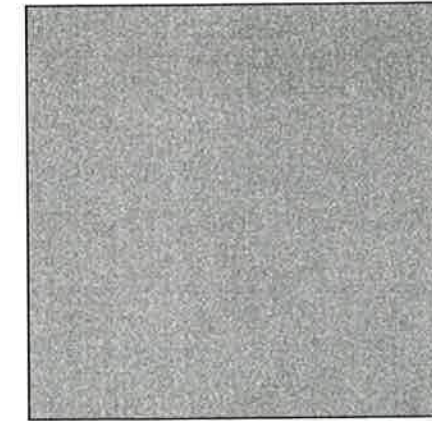


6. STONE (AT BASE)

ALLEY MATERIALS



1. GRANITE (TO MATCH EXISTING)



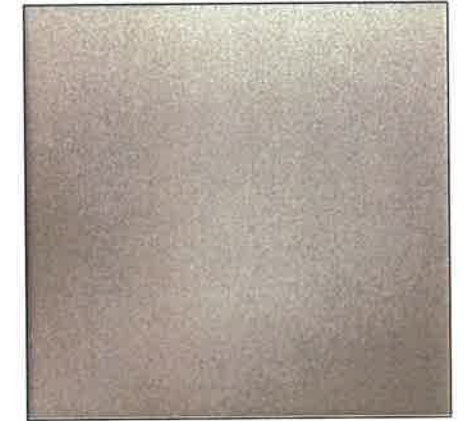
4. STEEL (AT BALCONIES)



2. CORTEN



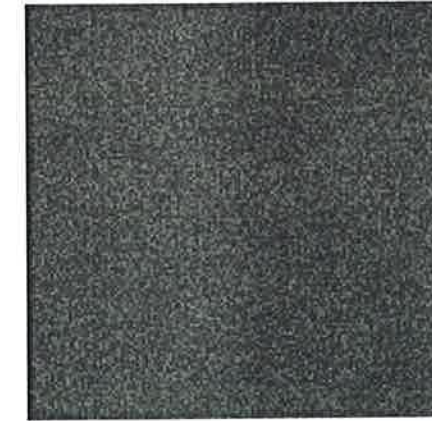
5. GREEN WALL



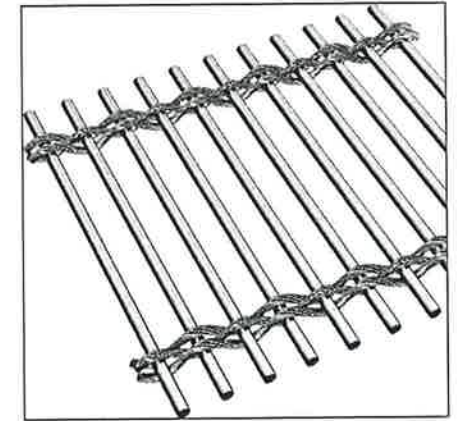
7. SHOT PEENED SS (GATE FRAME)



3. TERRA COTTA TILE



6. PAINTED METAL (GATE FRAME)



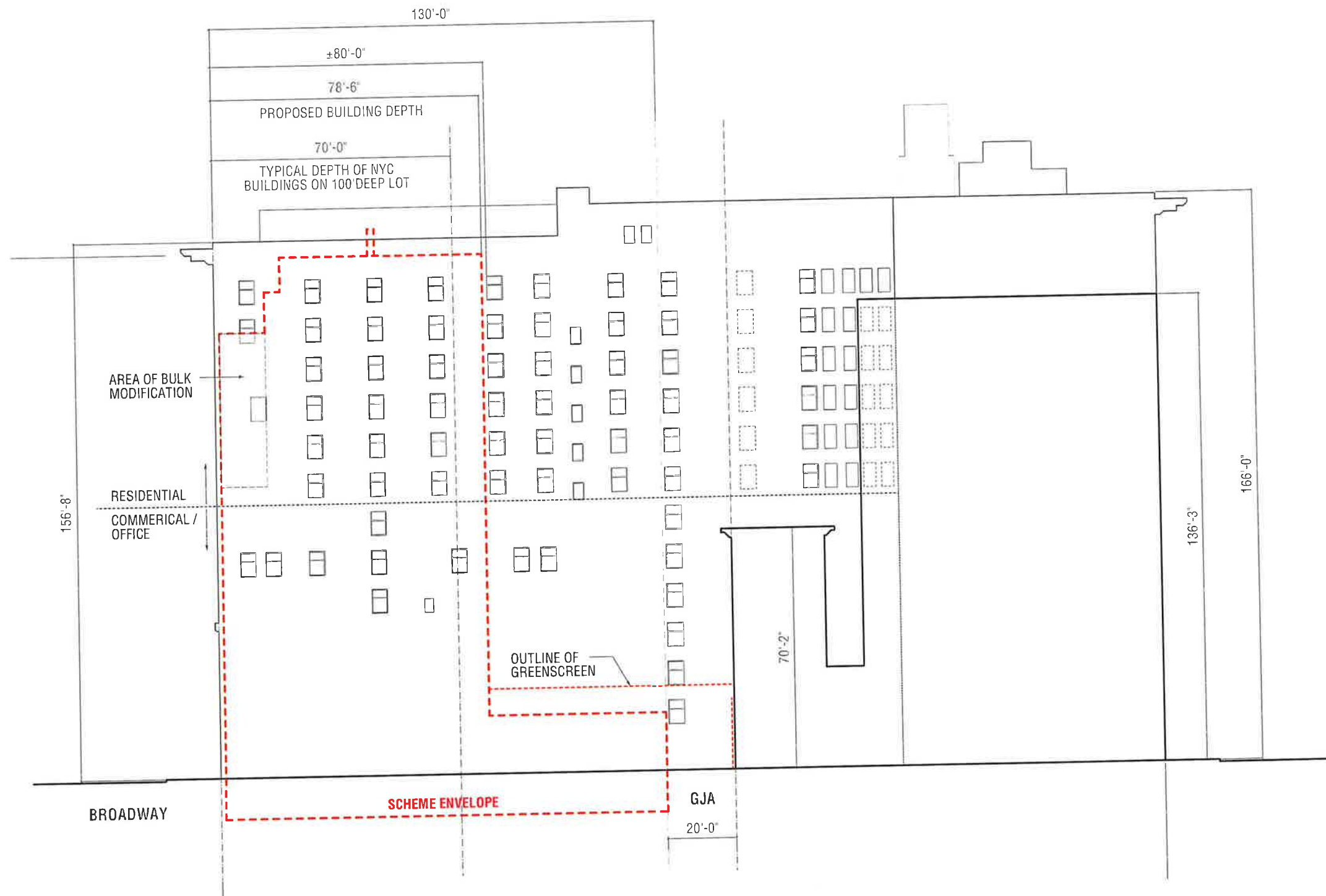
8. S.S. MESH (GATE INFILL)

PROPOSED MATERIALS

688 BROADWAY

NEW YORK, NEW YORK, 10012

Project No.: 1034
10/09/2012

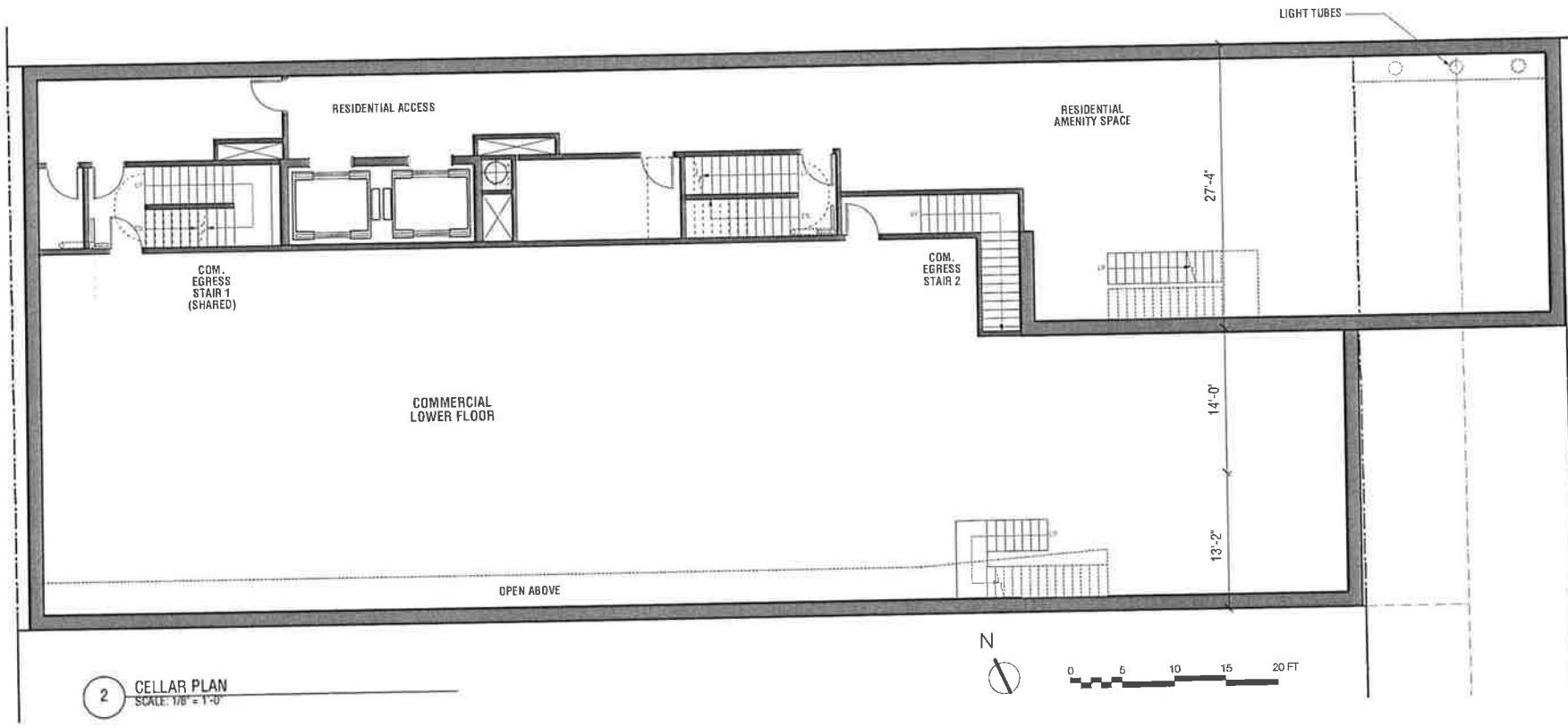
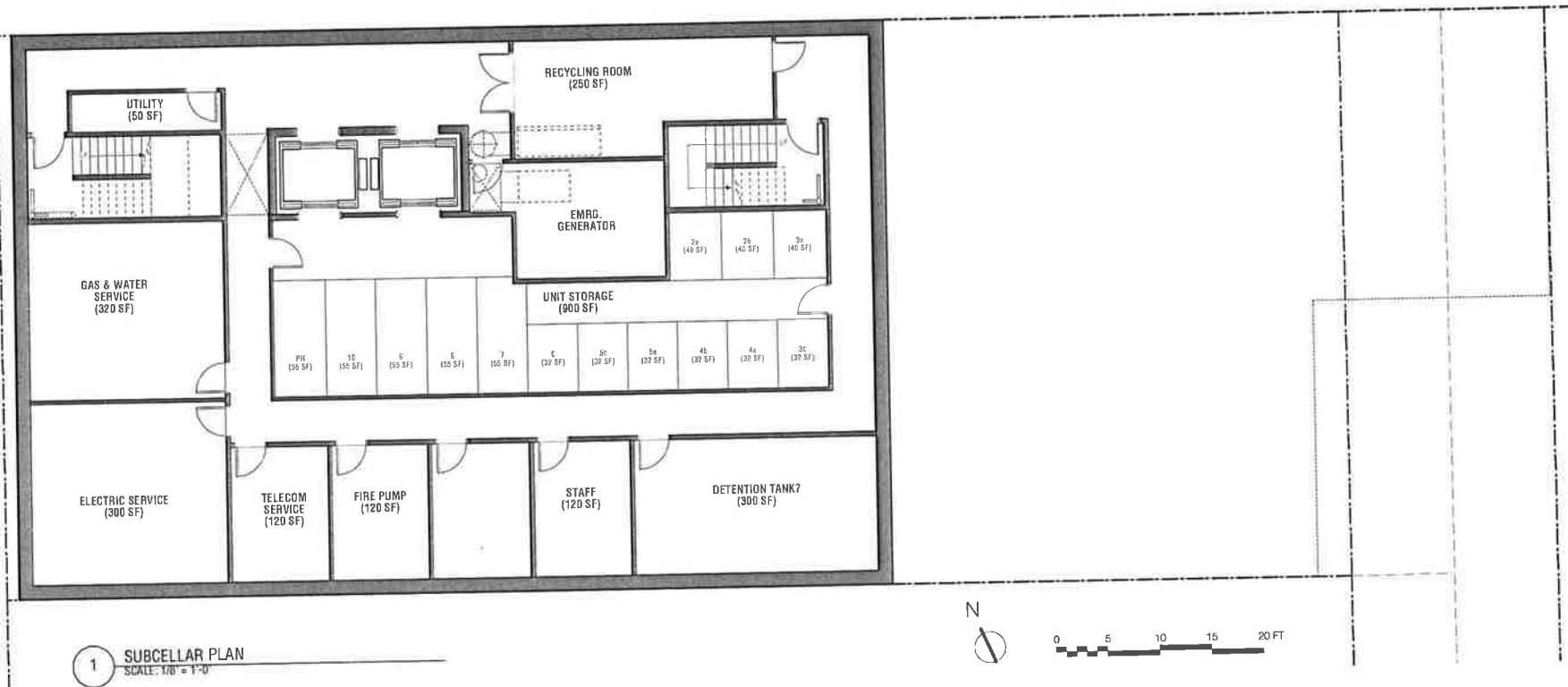


AFFECTED LOT LINE WINDOWS

688 BROADWAY

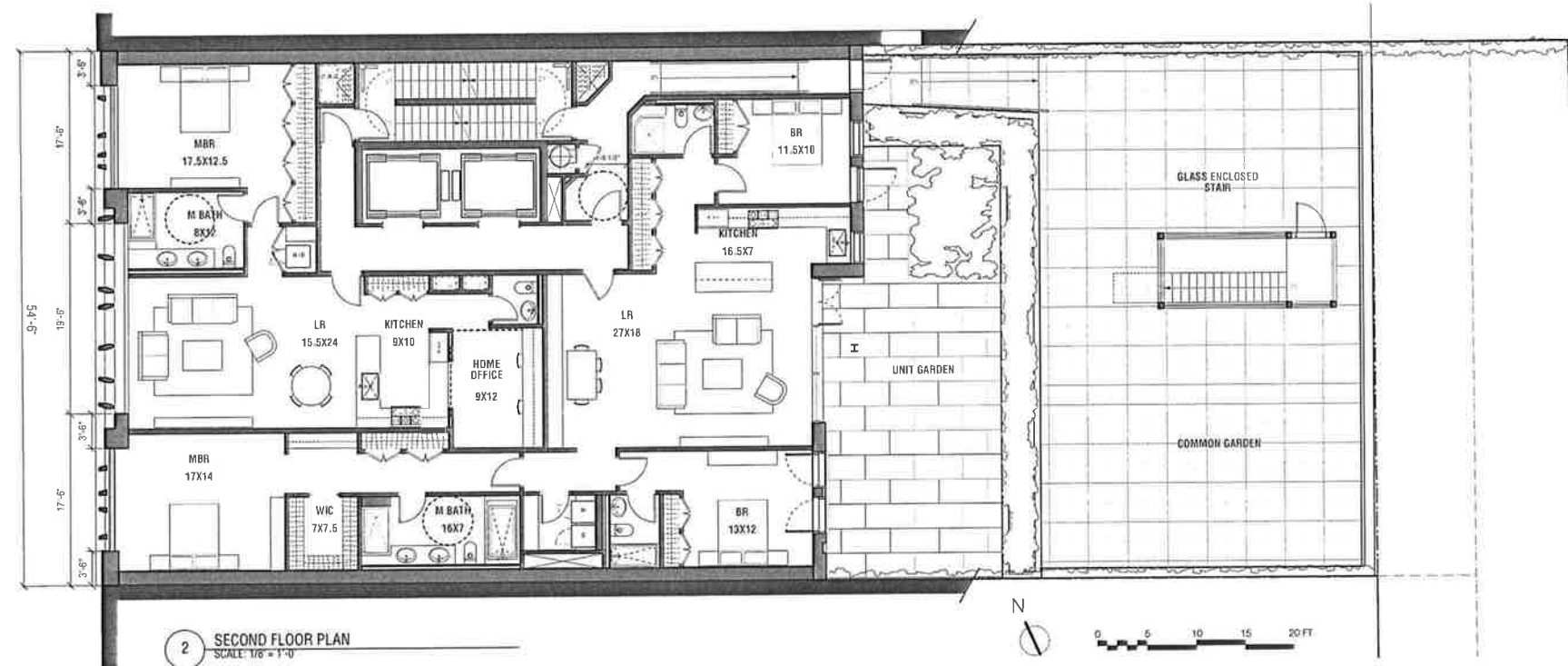
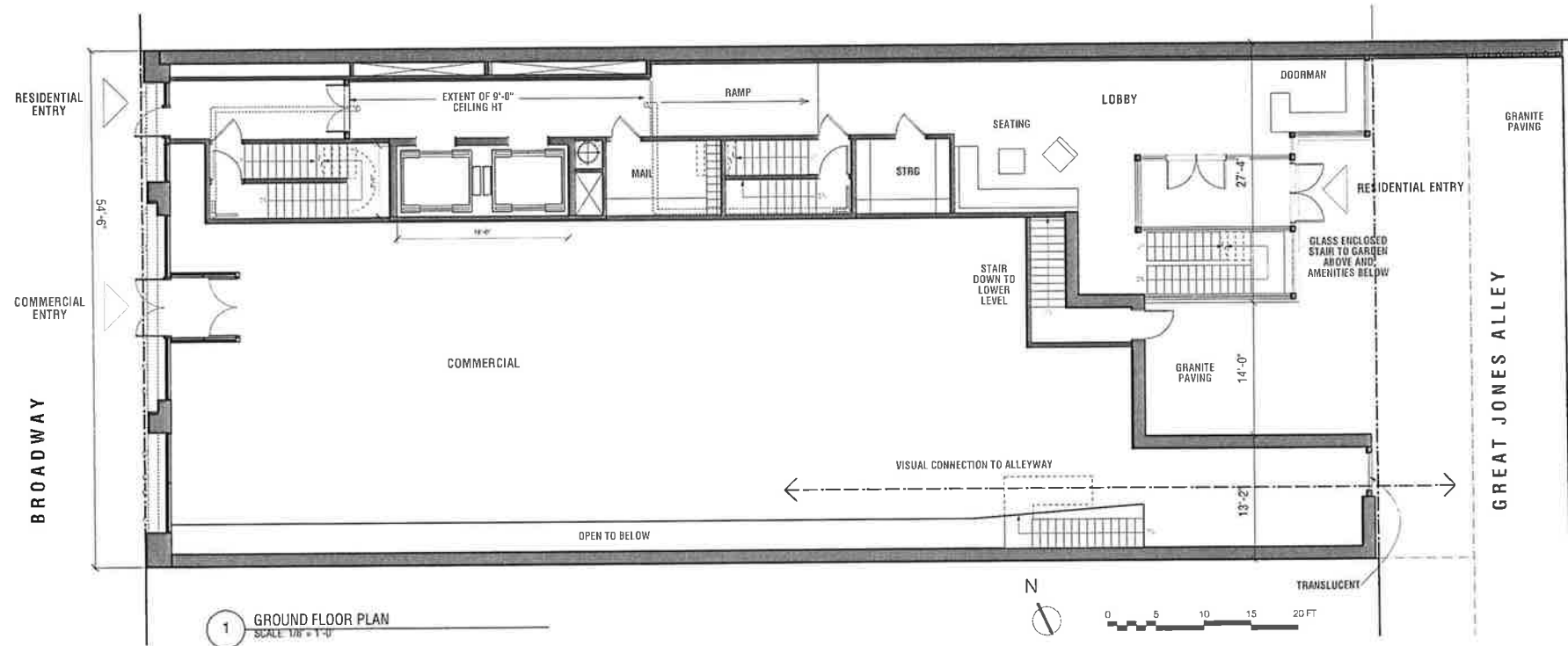
NEW YORK, NEW YORK, 10012

Project No.: 1034
10/09/2012



SUBCELLAR AND CELLAR PLANS
688 BROADWAY
NEW YORK, NEW YORK, 10012

Project No.: 1034
10/09/2012

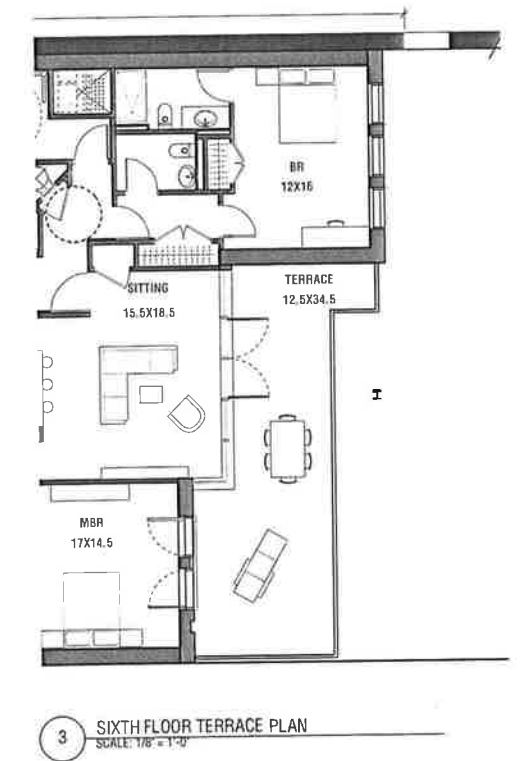
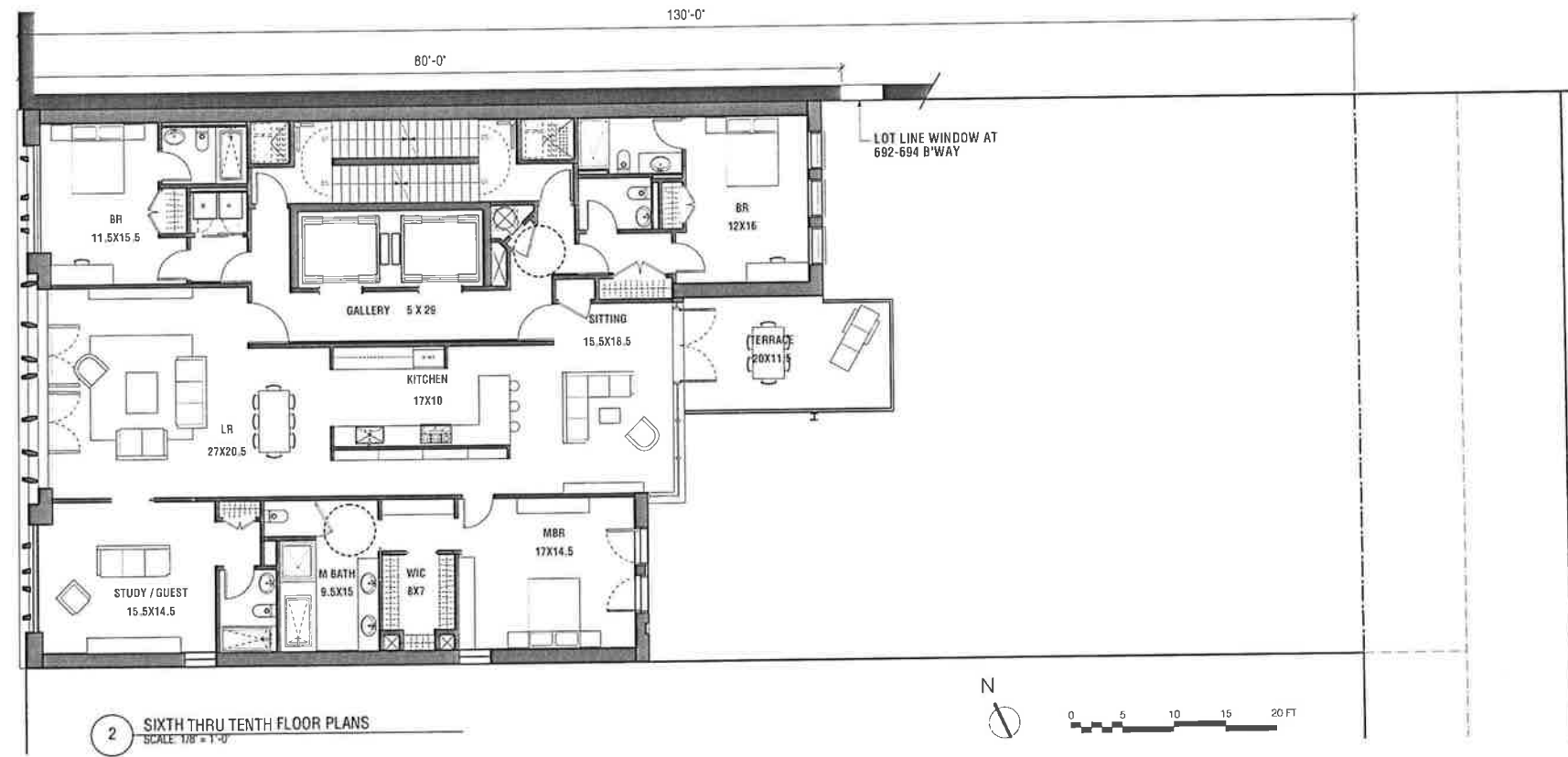
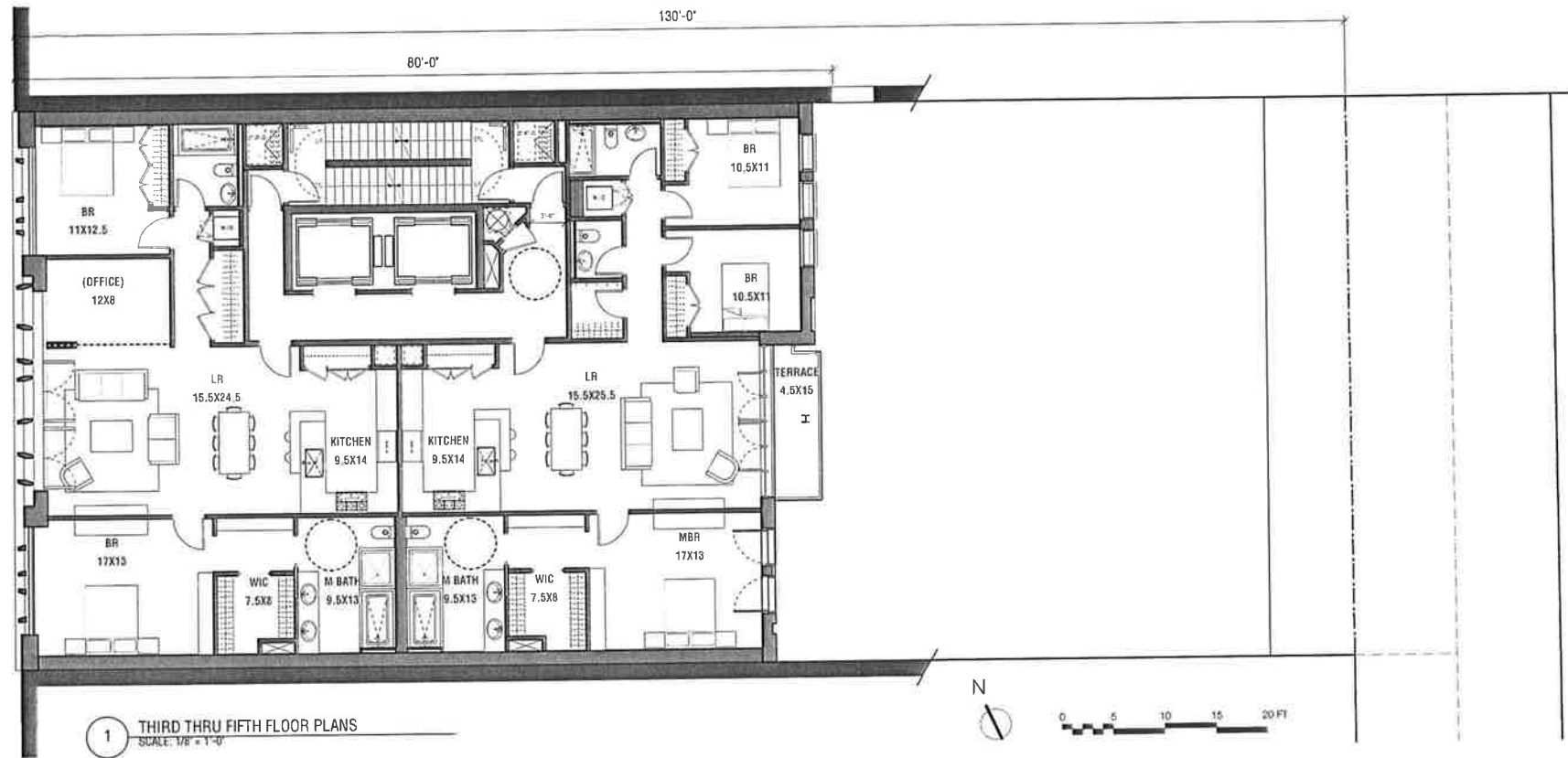


GROUND AND SECOND FLOOR PLANS

688 BROADWAY

NEW YORK, NEW YORK, 10012

Project No.: 1034
10/09/2012

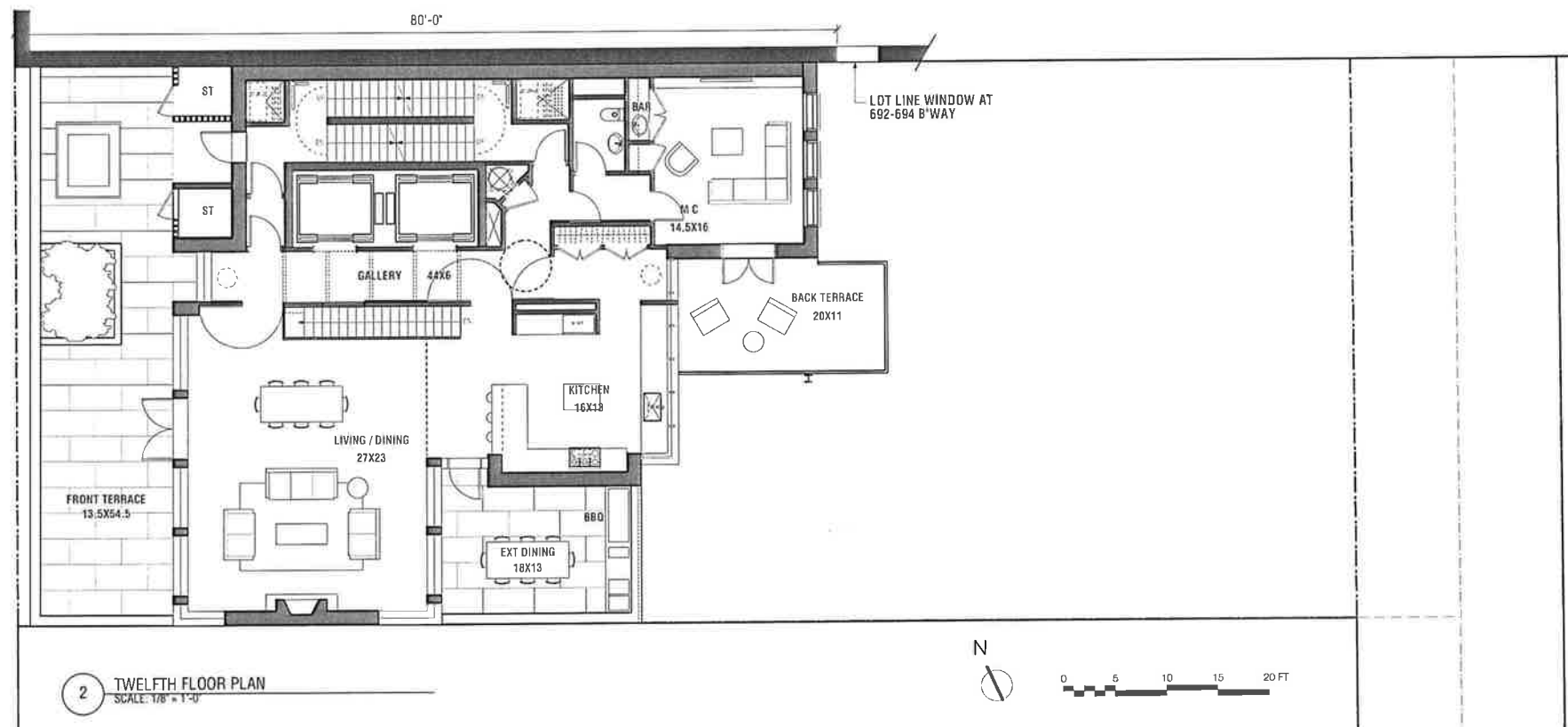


THIRD THROUGH TENTH FLOOR PLANS

688 BROADWAY

NEW YORK, NEW YORK, 10012

Project No.: 1034
10/09/2012

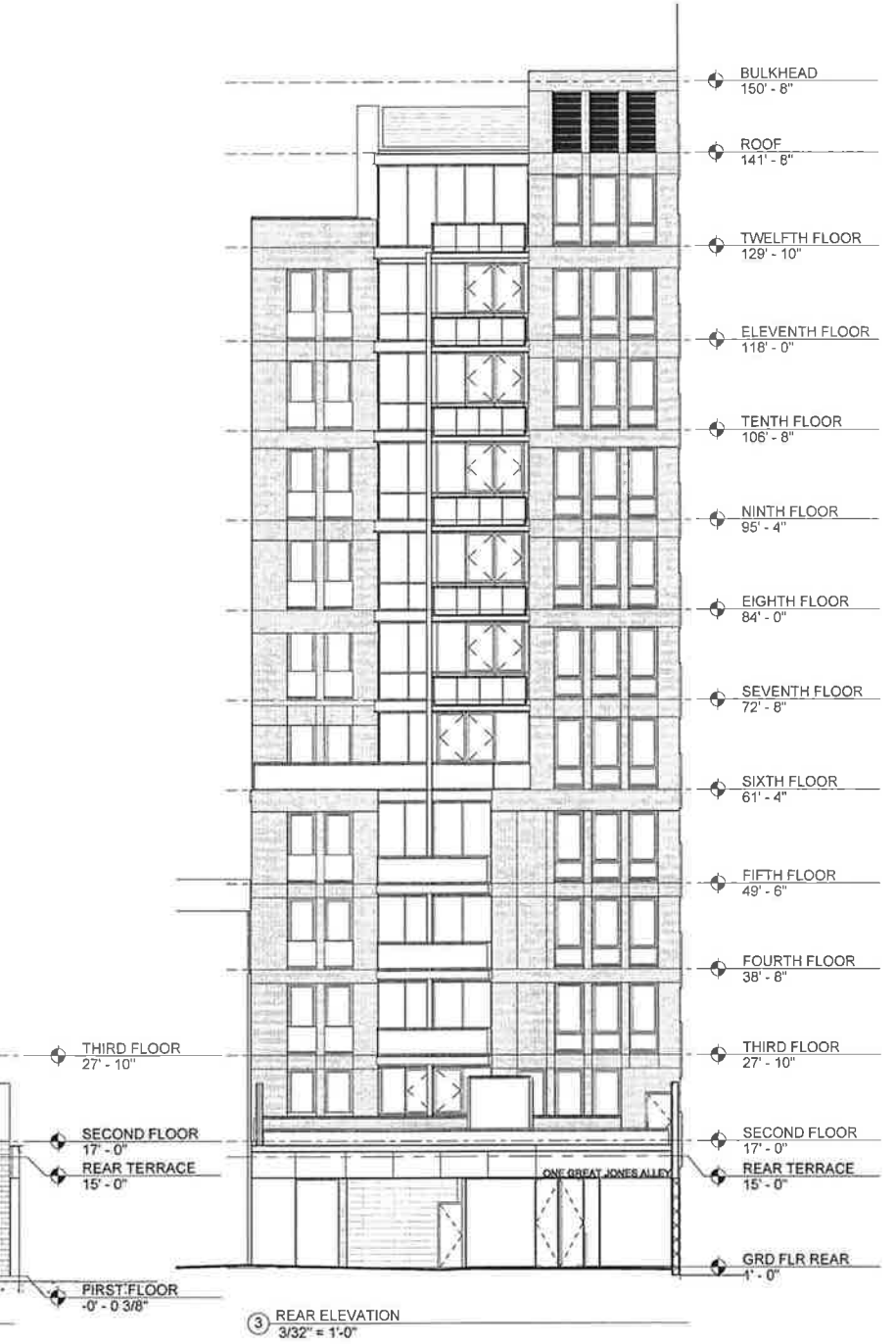
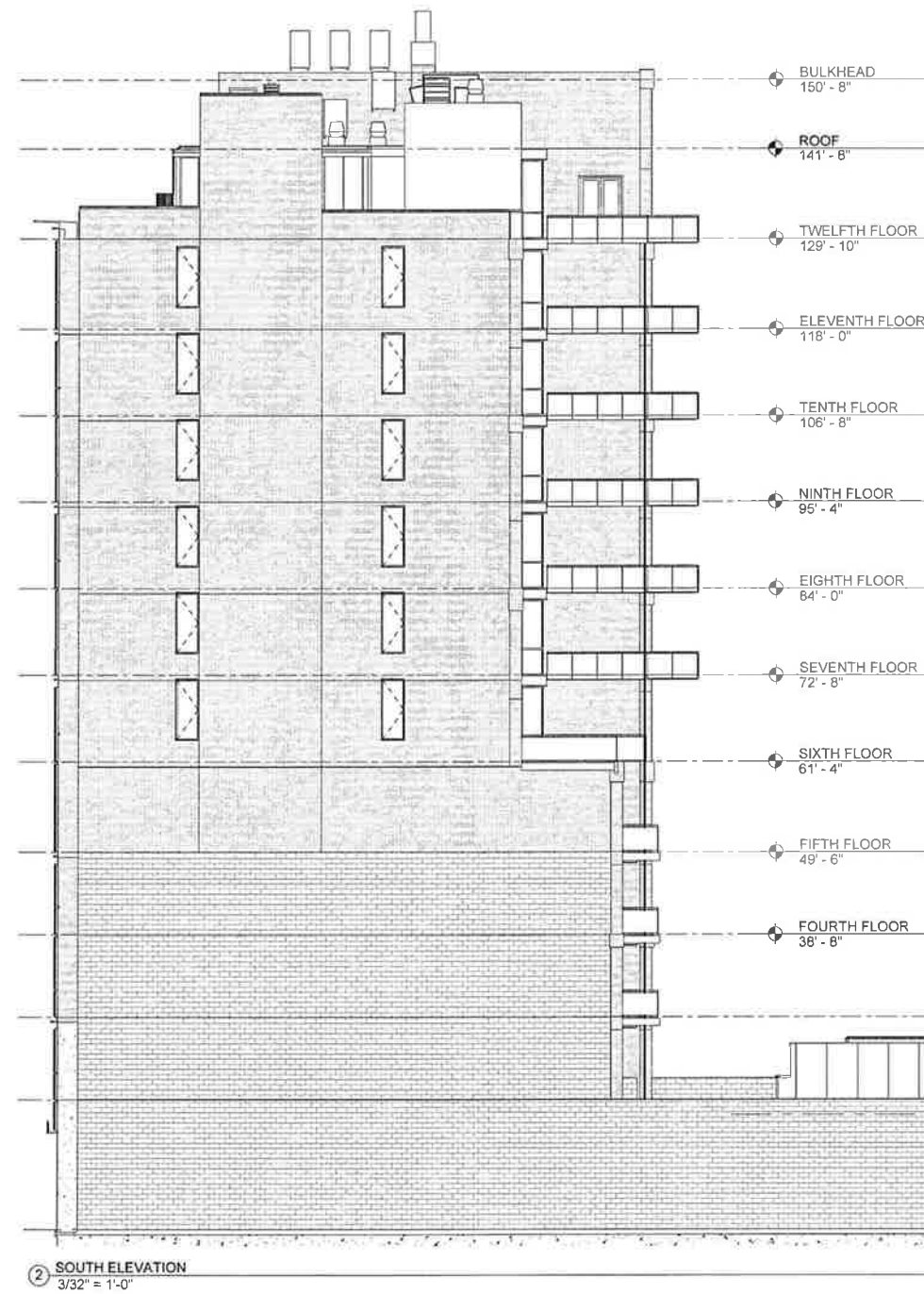
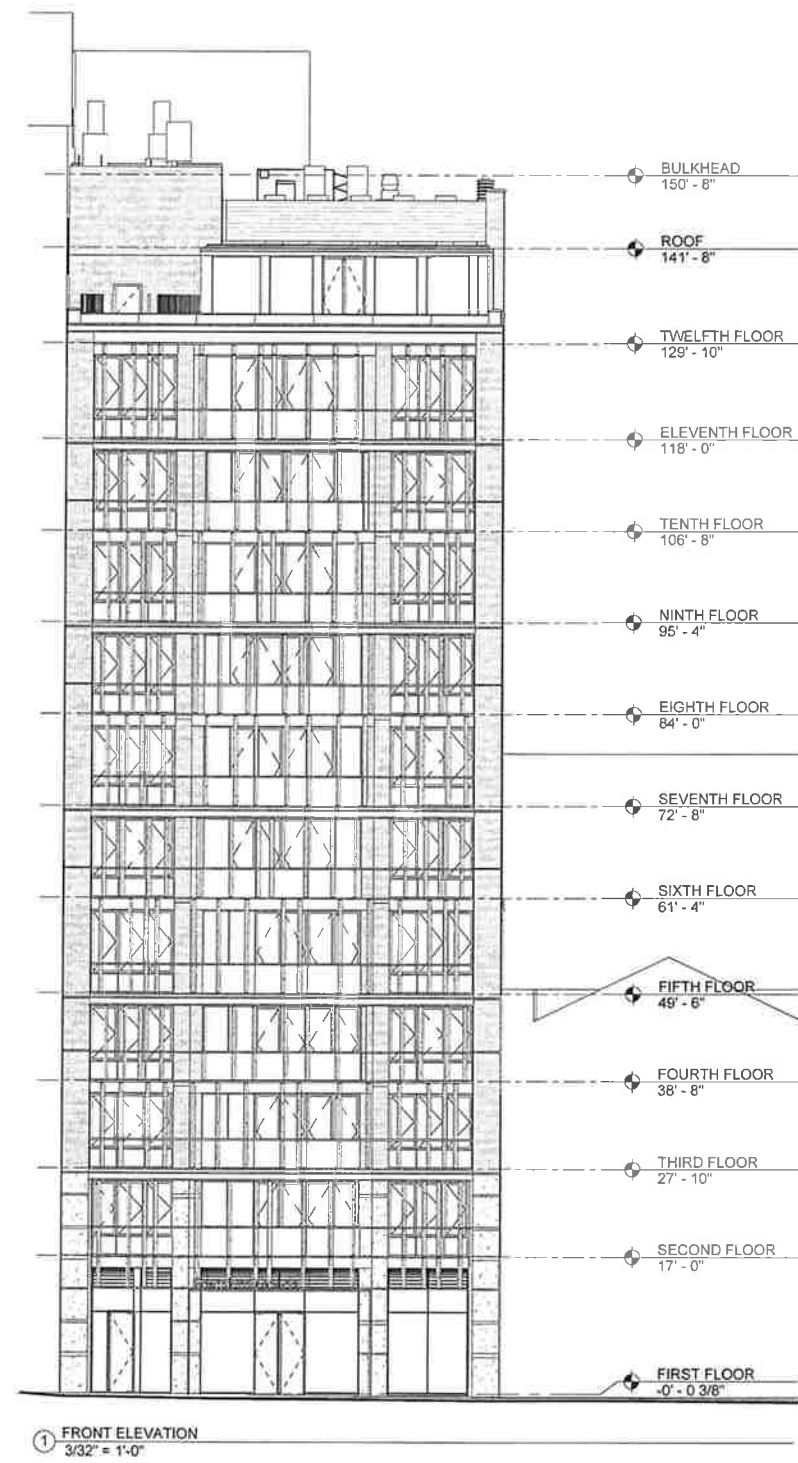


ELEVENTH AND TWELFTH FLOOR PLANS

688 BROADWAY

NEW YORK, NEW YORK, 10012

Project No.: 1034
10/09/2012



ELEVATIONS

688 BROADWAY

NEW YORK, NEW YORK, 10012

3/32" = 1'-0"
 Project No.: 1034
 10/09/2012