



1 PARTIAL BUILDING PLAN  
SCALE 1/8" = 1'-0"

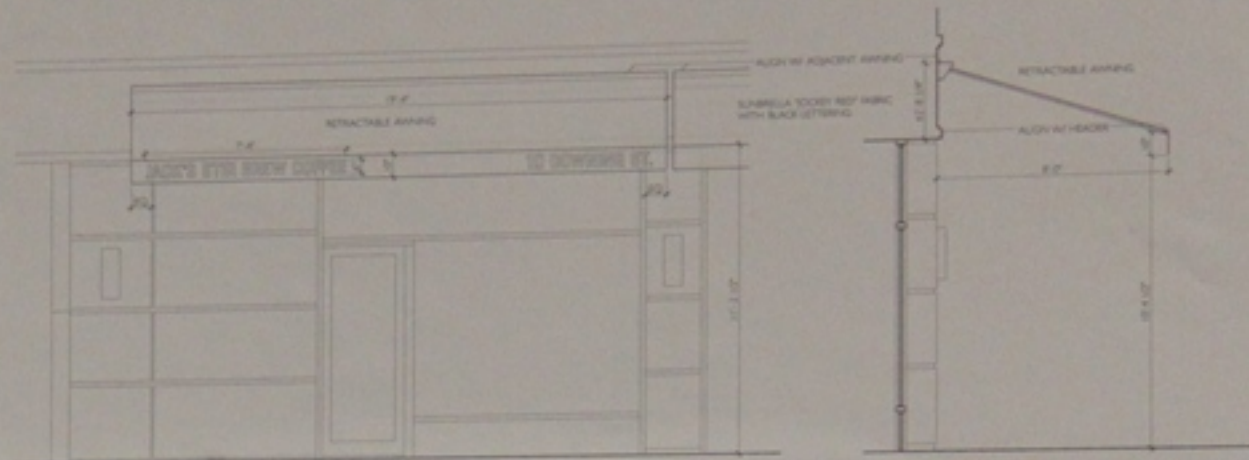


2 SIXTH AVENUE PARTIAL EXISTING ELEVATION

10 DOWNING ST.



1 EXISTING VIEW CORNER 4TH AVE. & DOWNING ST.



2 STOREFRONT ELEVATION  
SCALE 1/4" = 1'-0"

3 STOREFRONT SECTION  
SCALE 1/4" = 1'-0"



4 AWNING FABRIC



5 SIXTH AVENUE STOREFRONT ELEVATION

10 DOWNING ST.

LPC 137960  
R 12/6/12 KXP/LS