

SUTTON MANAGEMENT COMPANY  
41 EAST 57TH STREET, 26TH FLOOR  
NEW YORK CITY, NEW YORK 10022  
TEL 212.583.5888

LOFFREDO BROOKS ARCHITECTS P.C.  
118 WEST 22ND STREET - 4TH FLOOR  
NEW YORK CITY, NEW YORK 10011  
TEL 212.679.7729 FAX 212.725.8914  
E-MAIL INFO@LBARCH.COM



22 E 14th Street  
Key Plan



View from SW side of 14th Street



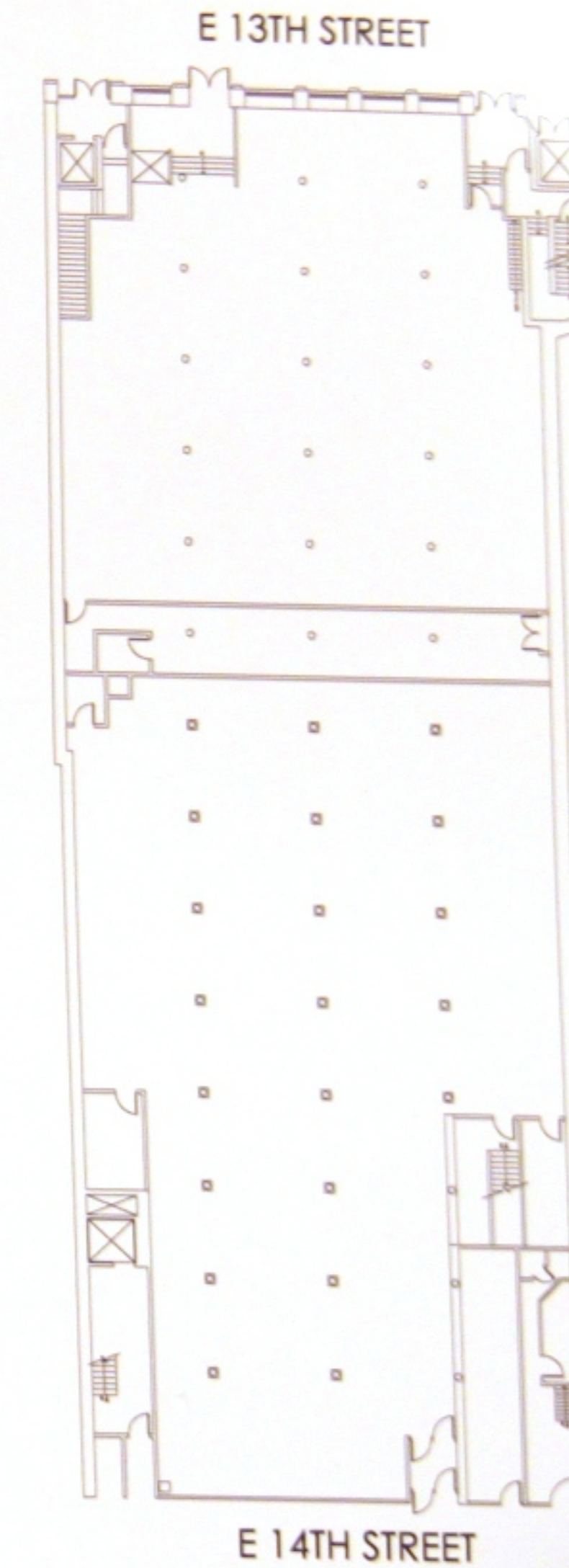
Enlarged View of Storefront



View from NW side of 14th Street



Enlarged View of Storefront



Existing Floor Plan  
SCALE: 1/16" = 1'-0"

STOREFRONT INSTALLATION  
22 E 14TH STREET, NEW YORK, NY

Current Photo Documentation

SHEET 1  
CB 04.29.13  
LPC 05.07.13



SUTTON MANAGEMENT COMPANY  
41 EAST 57TH STREET, 26TH FLOOR  
NEW YORK CITY, NEW YORK 10022  
TEL: 212.685.5888

**B** LOFFREDO BROOKS ARCHITECTS P.C.  
118 WEST 22ND STREET - 4TH FLOOR  
NEW YORK CITY, NEW YORK 10011  
TEL: 212.679.7729 FAX: 212.725.8914  
E-MAIL: INFO@LBARCH.COM



Existing Storefront at 22 E 14th Street

Proposed Storefront at 22 E 14th Street

AREA OF PROPOSED WORK

SCOPE OF WORK INCLUDES:  
REMOVAL OF EXISTING SECURITY SCREEN,  
GLASS AND METAL STOREFRONT, SIDEWALK  
CANOPY, FRESH AIR VENTS, STOREFRONT  
ARRANGING. PROPOSED INSTALLATION OF  
NEW GLASS AND ALUMINUM STOREFRONT,  
NEW GLASS AND ALUMINUM ENTRY DOORS,  
NEW ILLUMINATED SIGNAGE BAND AND  
CORNICE, NEW SIDEWALK CANOPY (NOT  
SUPPORTED BY BUILDING)

STOREFRONT INSTALLATION  
22 E 14TH STREET, NEW YORK, NY

Photo Documentation

SHEET 3  
CB 04.29.13  
LPC 05.07.13





efront at 22 E 14th Street

**SCOPE OF WORK INCLUDES:**

REMOVAL OF EXISTING SECURITY SCREENS, GLASS AND METAL STOREFRONT, SIDEWALK CANOPY, FRESH AIR VENTS, STOREFRONT AWNINGS; PROPOSED INSTALLATION OF NEW GLASS AND ALUMINUM STOREFRONT, NEW GLASS AND ALUMINUM ENTRY DOORS, NEW ILLUMINATED SIGNAGE BAND AND CORNICE; NEW SIDEWALK CANOPY (NOT SUPPORTED BY BUILDING)

SHEET 3  
CB 04.29.13  
LPC 05.07.13





View from intersection of E 14th Street & University Place (1910)

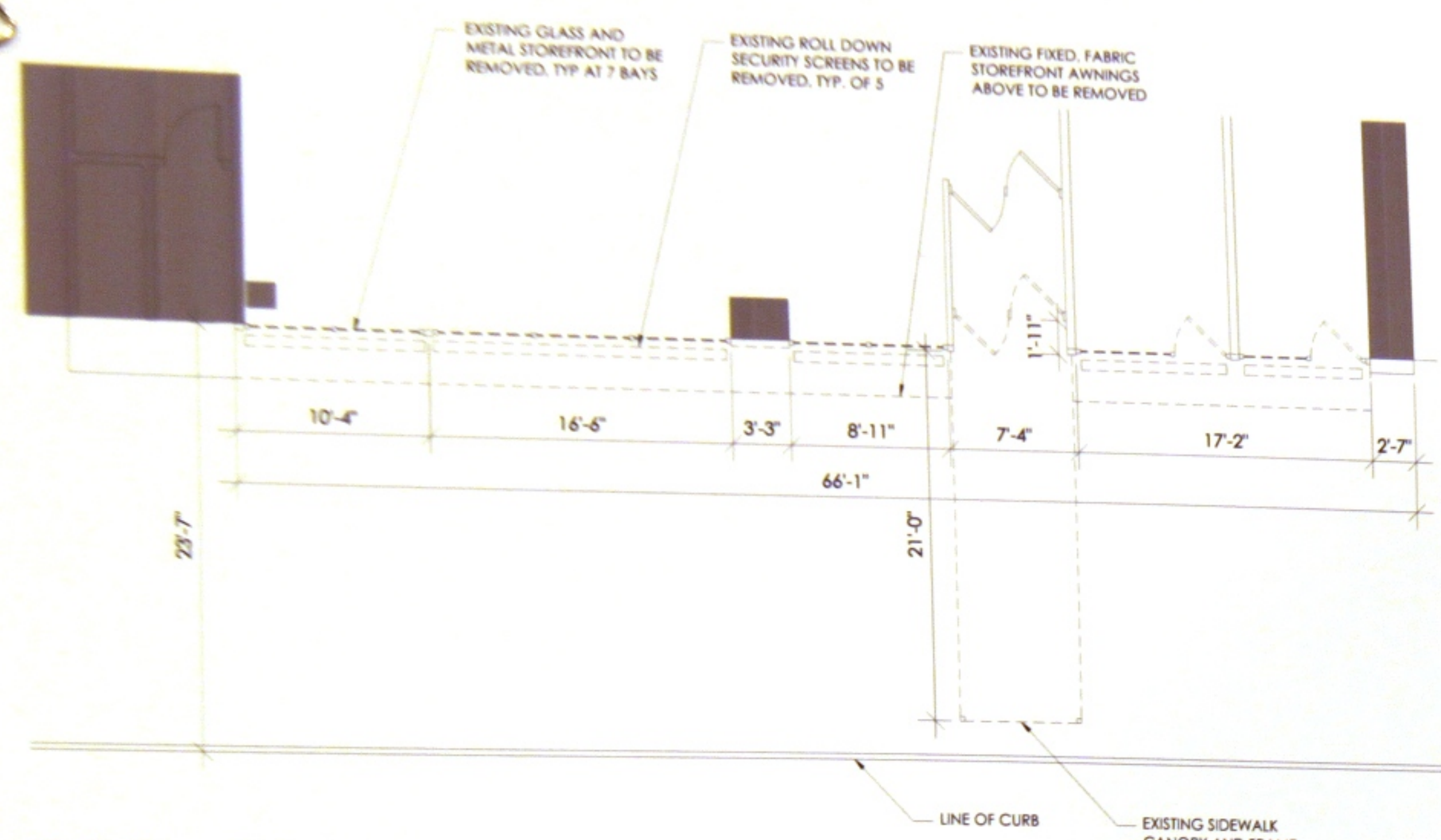


View from NW side of E 14th Street (1895)

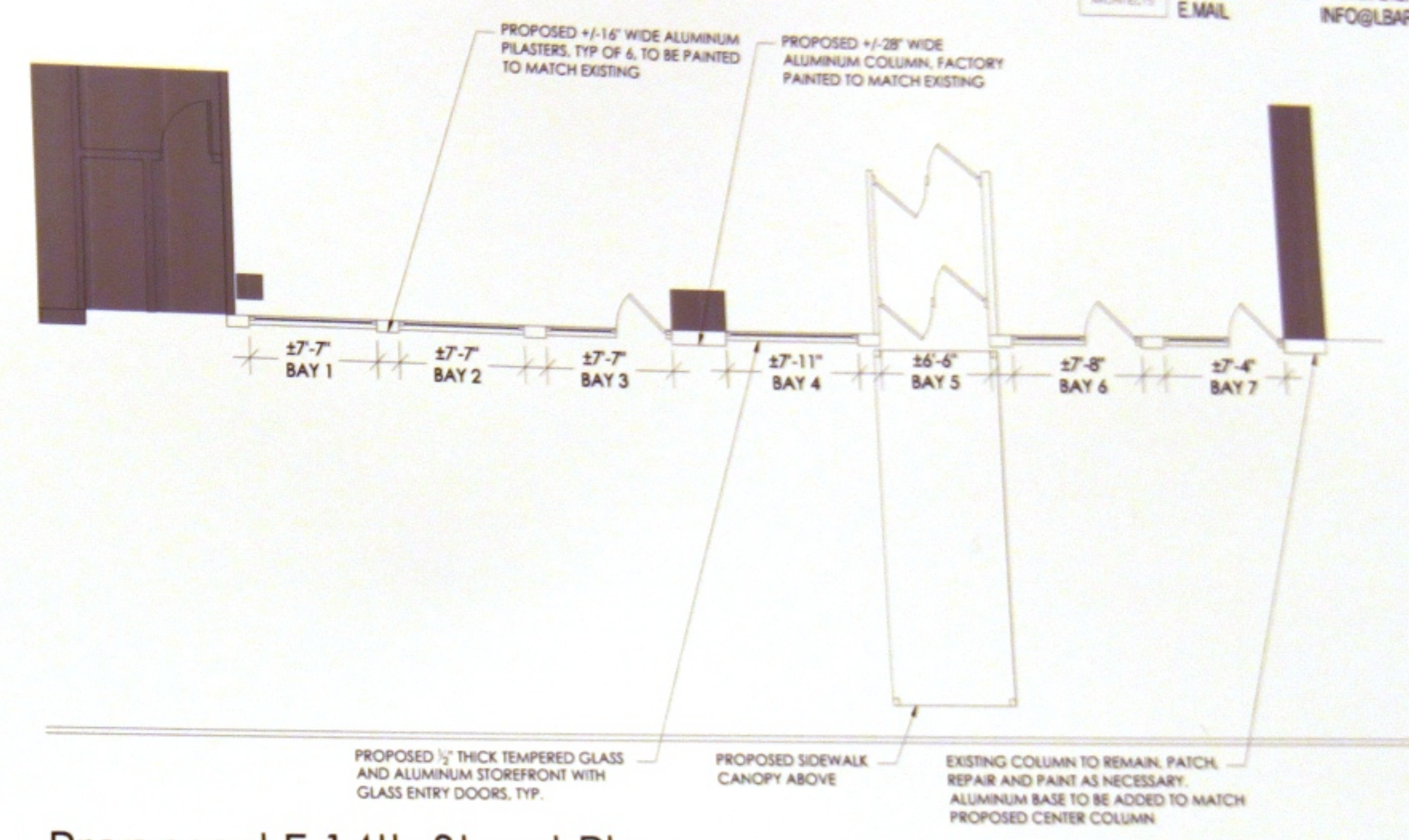


SUTTON MANAGEMENT COMPANY  
 41 EAST 57TH STREET, 28TH FLOOR  
 NEW YORK CITY, NEW YORK 10022  
 TEL 212.583.3388

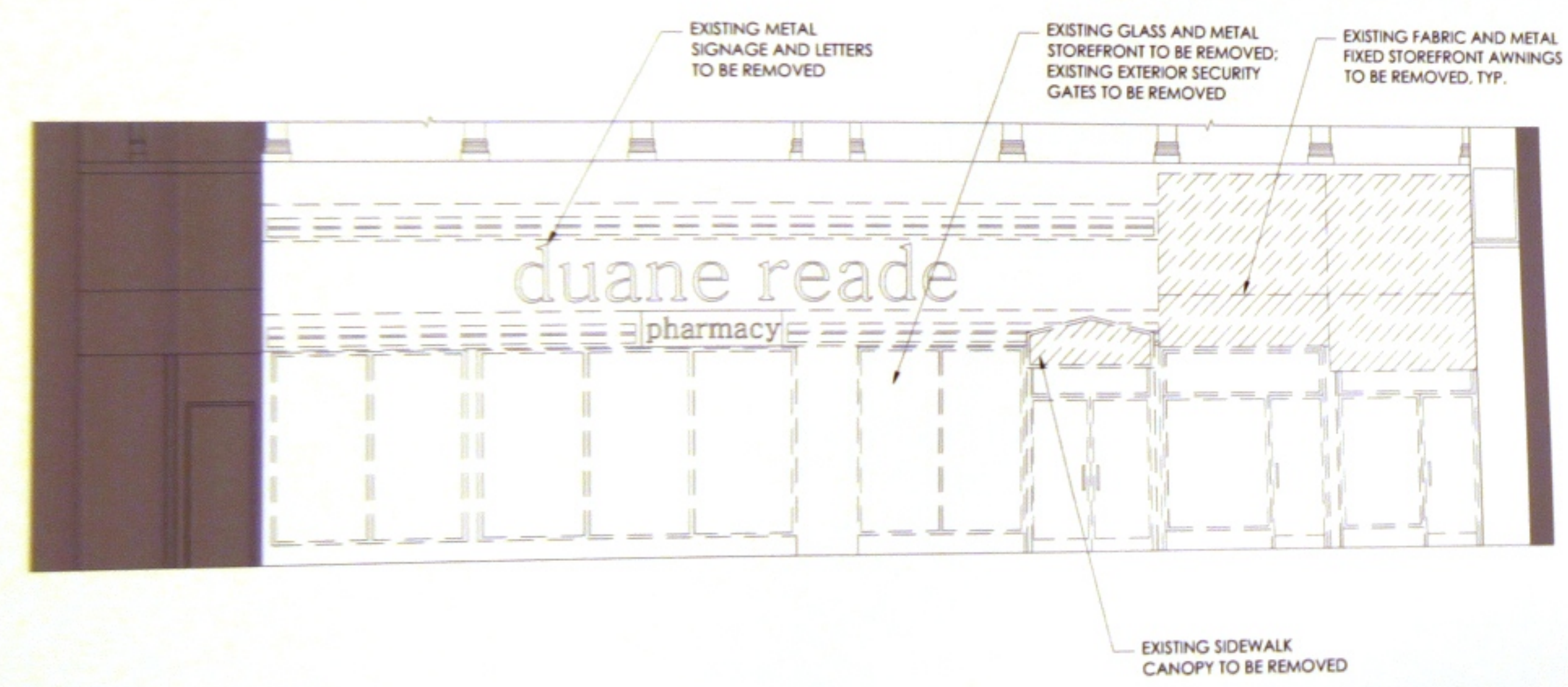
LOFFREDO BROOKS ARCHITECTS P.C.  
 118 WEST 22ND STREET - 4TH FLOOR  
 NEW YORK CITY, NEW YORK 10011  
 TEL 212.679.7729 FAX 212.725.8914  
 E-MAIL INFO@LBARCH.COM



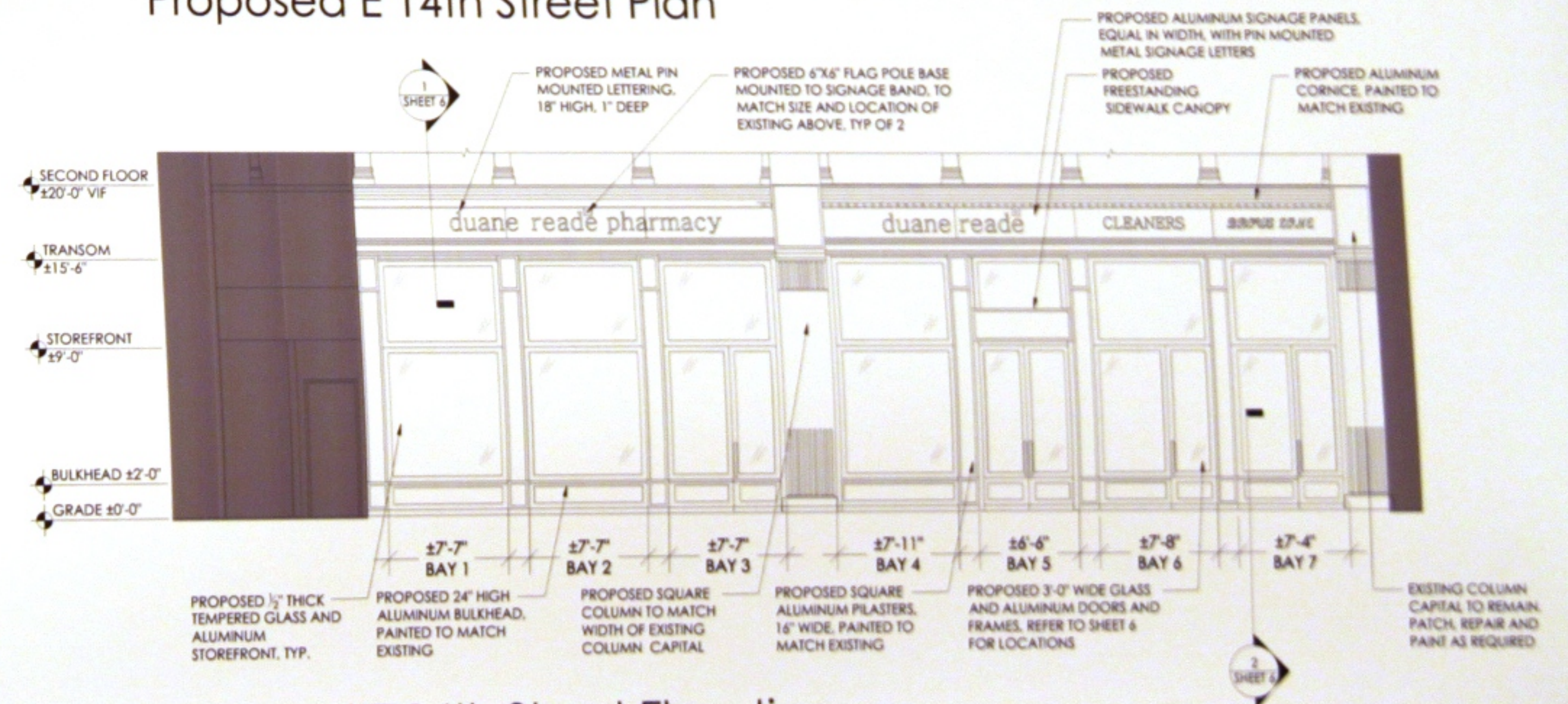
Existing E 14th Street Plan



Proposed E 14th Street Plan



Existing E 14th Street Elevation



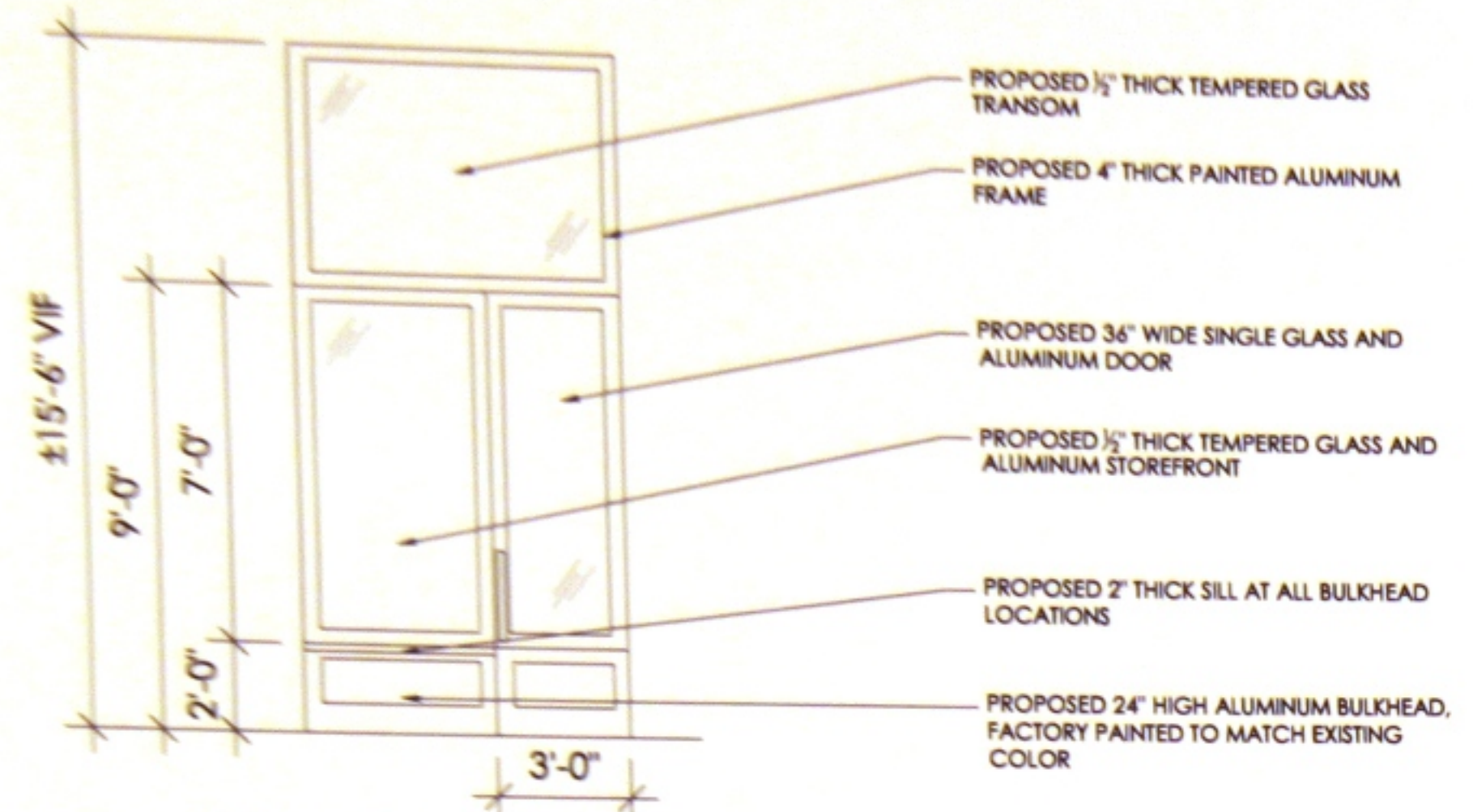
Proposed E 14th Street Elevation

STOREFRONT INSTALLATION  
 22 E 14TH STREET, NEW YORK, NY

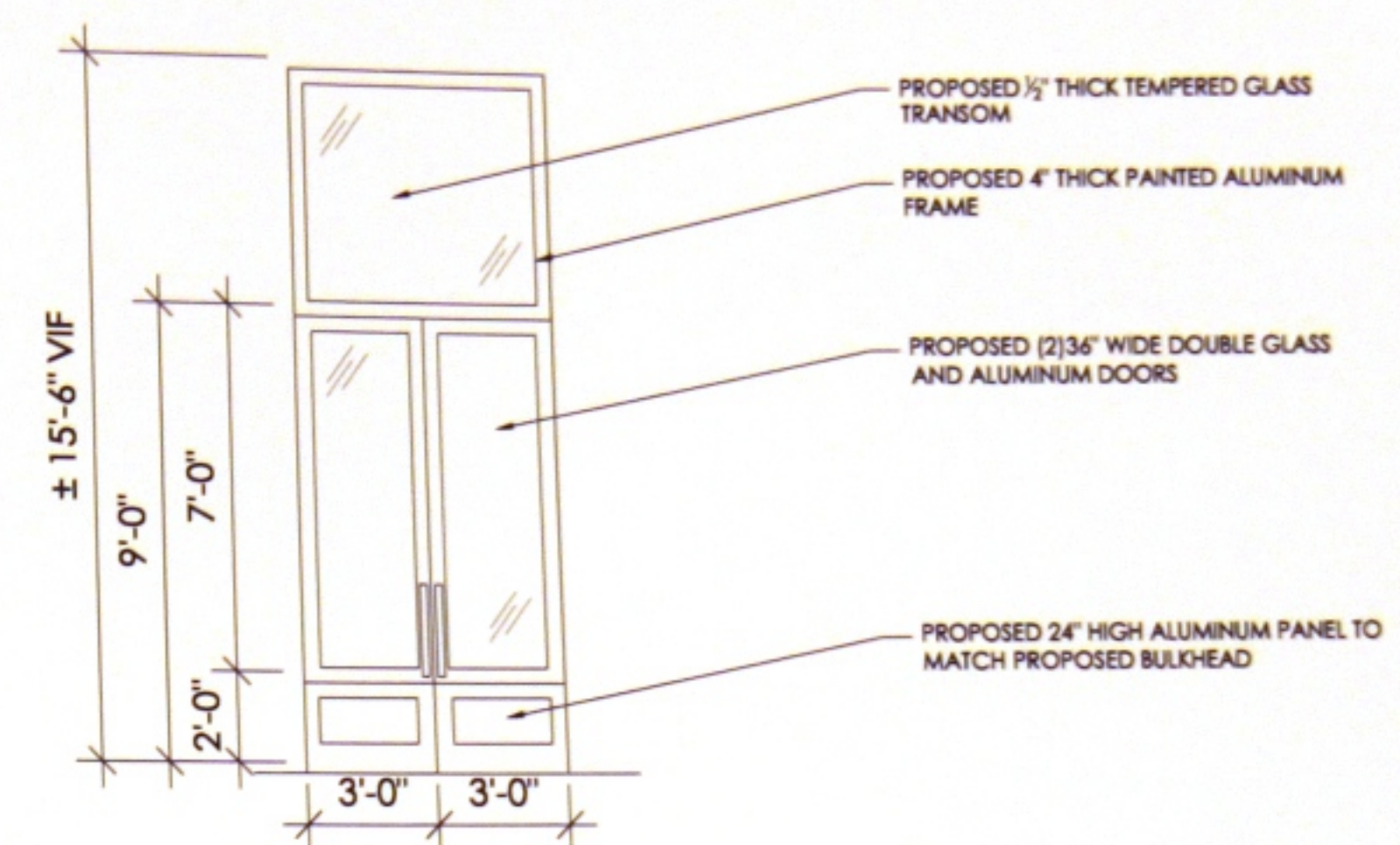
Floor Plans & Elevations

SHEET 5  
 CB 04.29.13  
 LPC 05.07.13





Proposed Single Entry Door (BAY 3, BAY 6 & BAY 7 ONLY)



Proposed Double Entry Door (BAY 5 ONLY)



POTENTIAL DOOR LOCATIONS:  
 BAY 3, BAY 5, BAY 6, BAY 7. MASTERPLAN  
 TO INCLUDE ENTRY DOORS AT EITHER 1, 2, 3  
 OR 4 OF THE ABOVE LOCATIONS. QUANTITY  
 AND LOCATION MAY VARY DEPENDING  
 UPON TENANT NEEDS. EXISTING ENTRANCES  
 OCCUR AT BAYS 5, 6 & 7.

Proposed Facade at 22 E 14th Street - Enlarged View