

O. Pagani & Bro. Music Store – 1st iteration



circa 1914 – circa 1920

O. Pagani & Bro. Music Store

2nd iteration



1920s

3rd iteration



circa 1930 – 1981



1997 storefront reconstruction



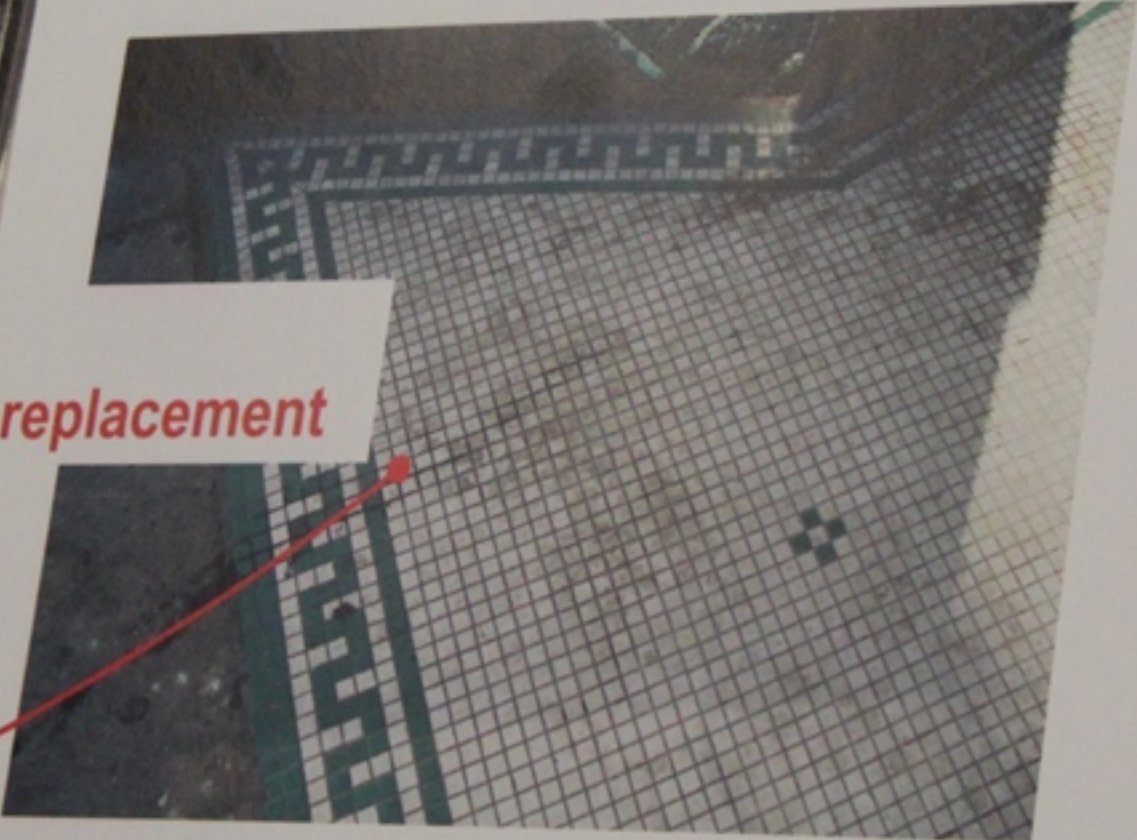
1981 – present: restaurants

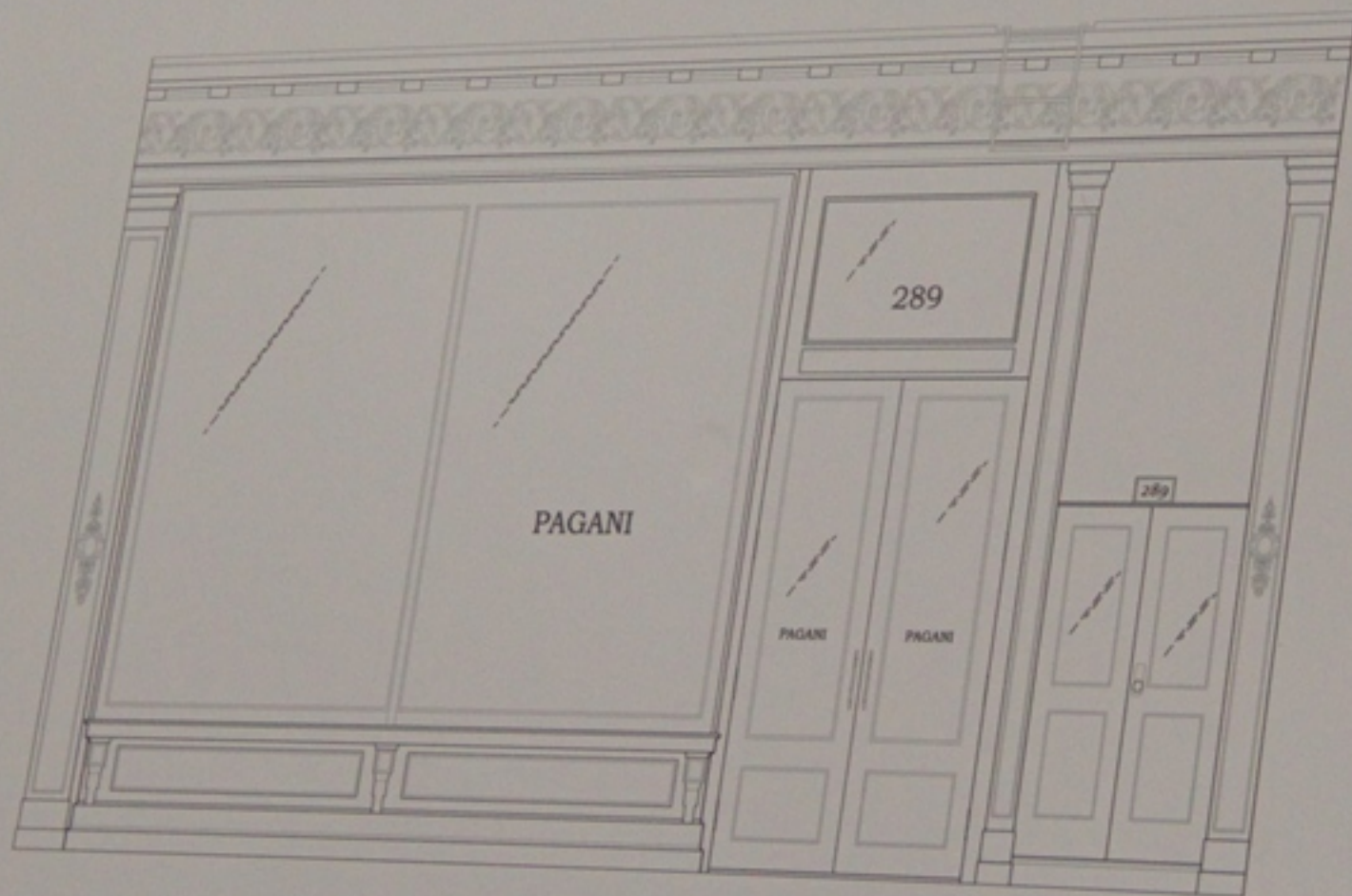


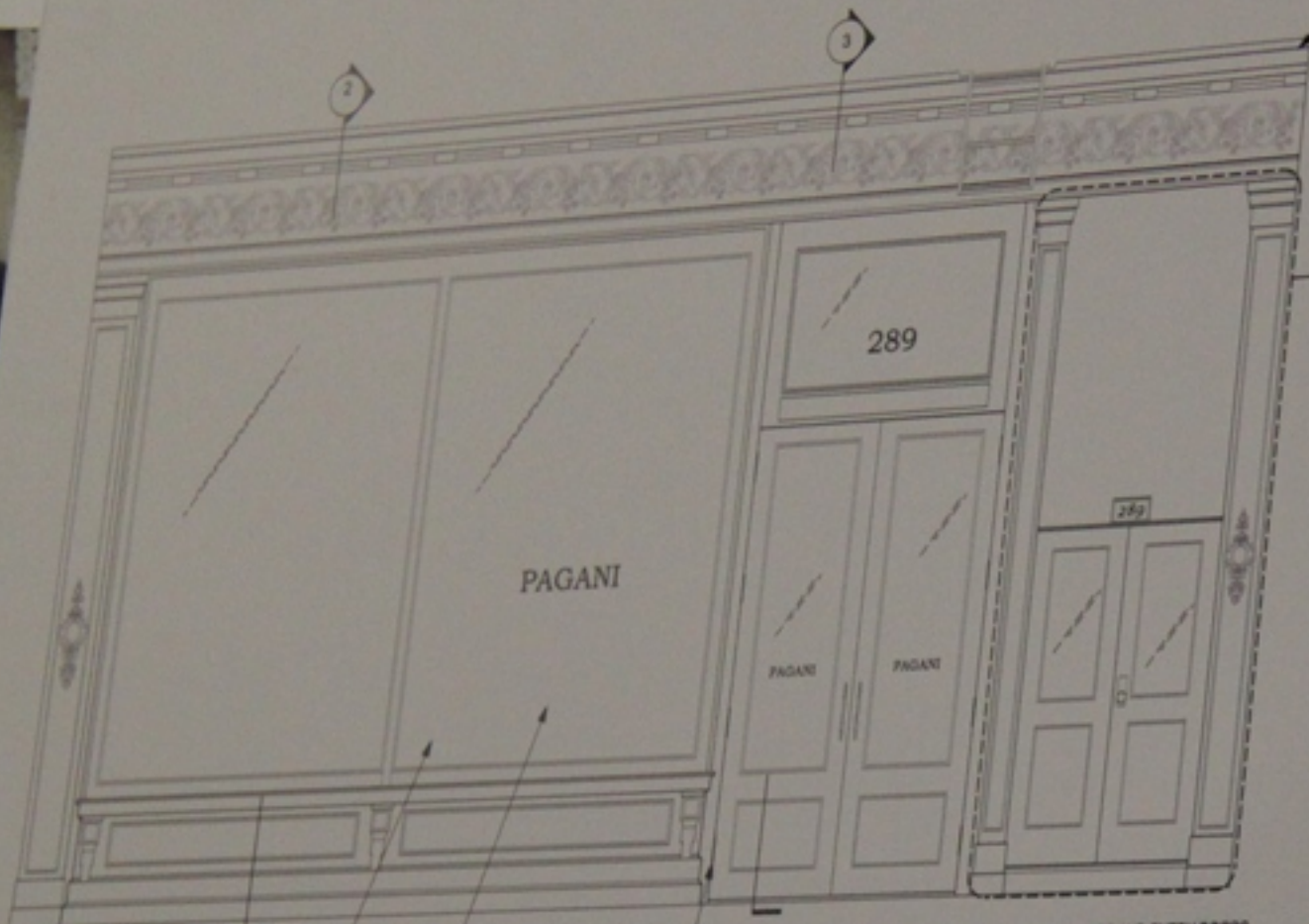
*post-2001
stained-glass restoration*



*circa 2001
mosaic tile replacement*



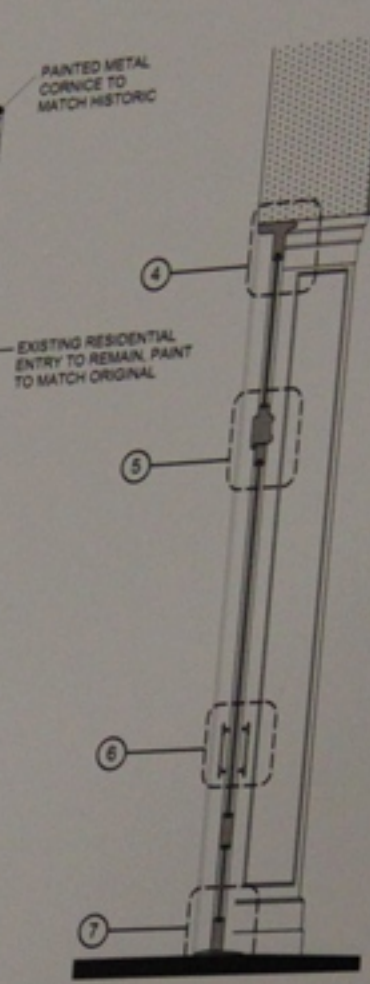




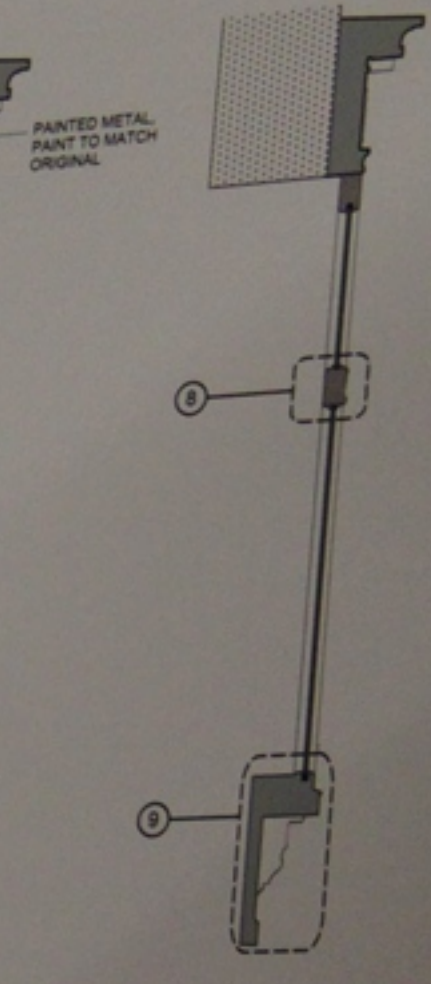
1 Proposed Elevation
Scale: 3/8" = 1'-0"

1/4" DOUBLE INSULATED TEMPERED GLASS
GOLD LEAF LETTERING ON ALL SIGNAGE
BRASS BALDWIN HARDWARE BALLBEARING FULL MORTISE DOOR HINGE - 1738038 (4 PER DOOR)

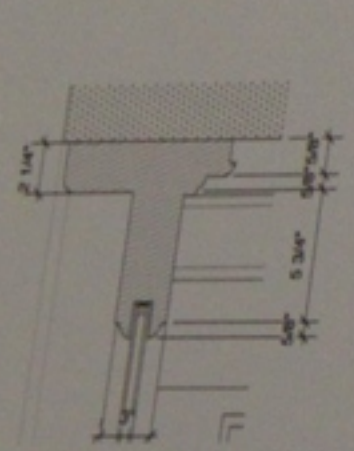
*NOTE: ENTIRE STOREFRONT STRUCTURE AND ENTRY DOORS TO BE CONSTRUCTED OF WOOD. CORNICE AND WOOD TO BE PAINTED FINE PAINTS OF EUROPE. MOUNT VERNON ESTATE MOPBOARD BLACK - MV51



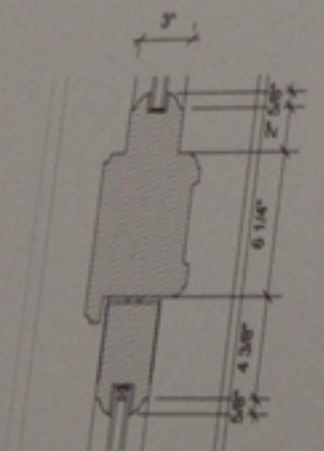
2 Proposed Door Section Detail
Scale: 3/8" = 1'-0"



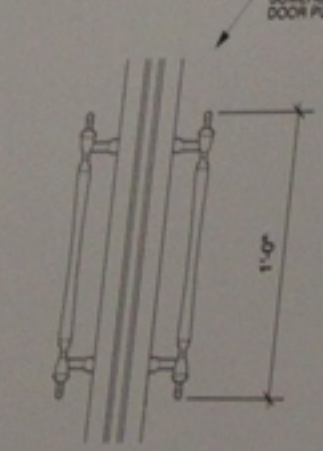
3 Proposed Section Detail
Scale: 3/8" = 1'-0"



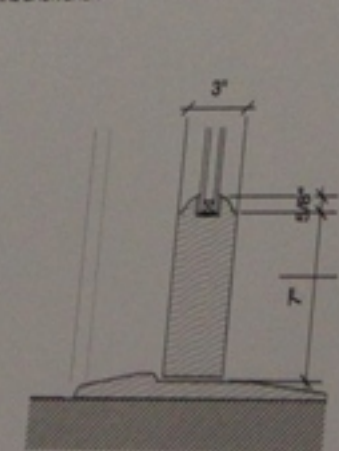
4 Proposed Top Rail Detail
Scale: 2" = 1'-0"



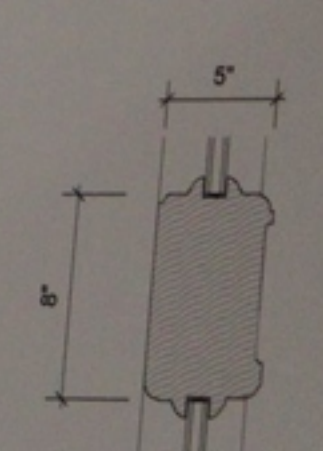
5 Proposed Transom Detail
Scale: 2" = 1'-0"



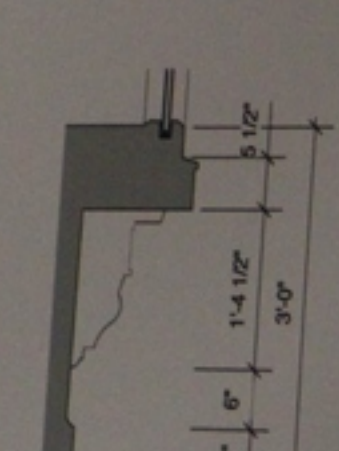
6 Proposed Hardware Detail
Scale: 2" = 1'-0"



7 Proposed Bottom Rail Detail
Scale: 2" = 1'-0"



8 Proposed Transom Detail
Scale: 2" = 1'-0"



9 Proposed Bottom Rail Detail
Scale: 3/4" = 1'-0"

BRASS TOP KNOBS PAIR SOMERSET FINIAL BACK BACK DOOR PULL

289

PAGANI