

101 Perry Street

7/16/2014

Mary B Dierickx Historic Preservation Consulting



101 Perry Street Existing Conditions, 7/16/2014
Mary B Dierickx Historic Preservation Consulting



Center & Right:
101 Perry c1940 (Municipal Archives)

Left: 101 Perry c1930s & Close-up (NYPL)

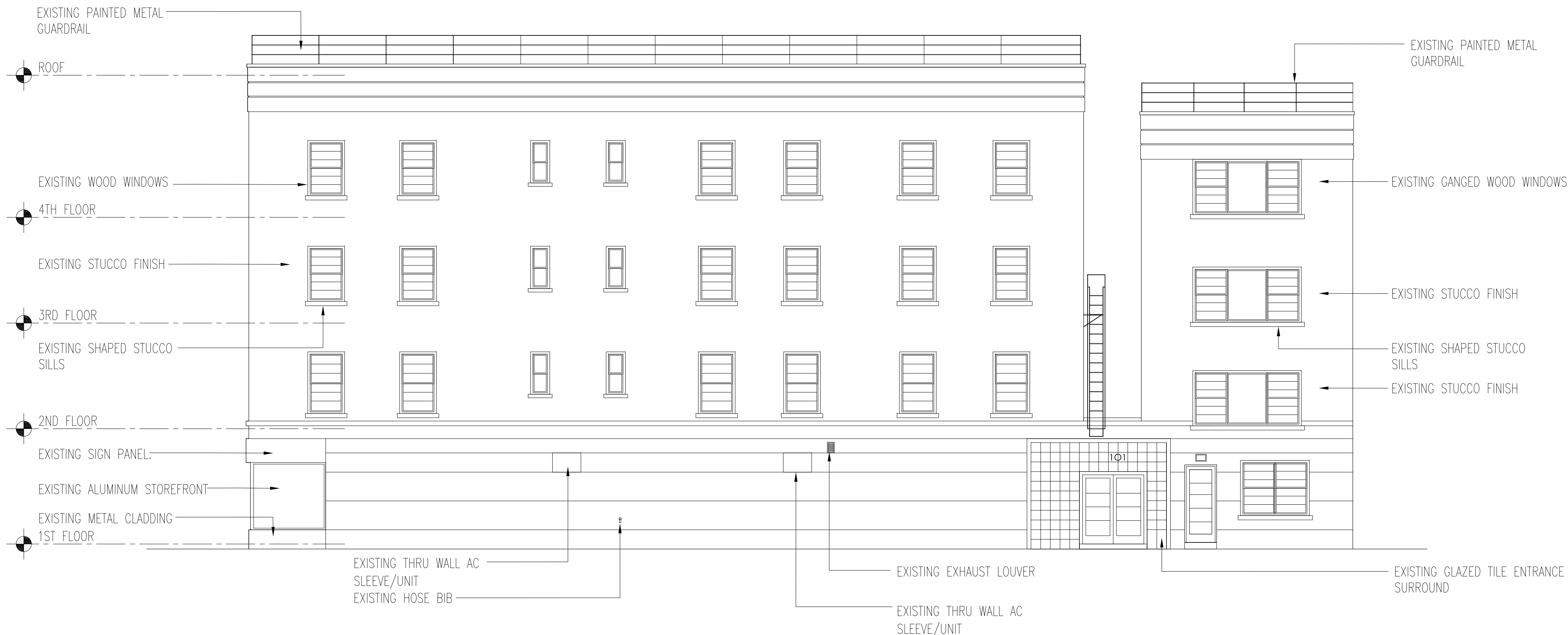
101 Perry Street Historic Conditions
7/16/2014

Mary B Dierickx Historic Preservation Consulting

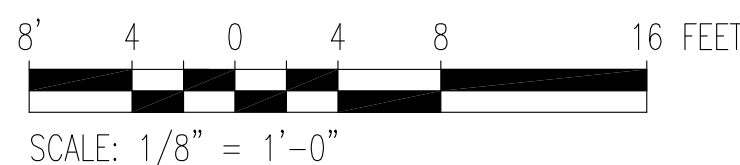
© 2014 Zaskorski & Notaro Architects, AIA, LLP. All rights reserved. 101 Perry Street, New York, NY 10014. 212-239-7212. www.znarchs.com



1 WEST ELEVATION (EXISTING CONDITIONS)
SCALE: 1/8" = 1'-0"



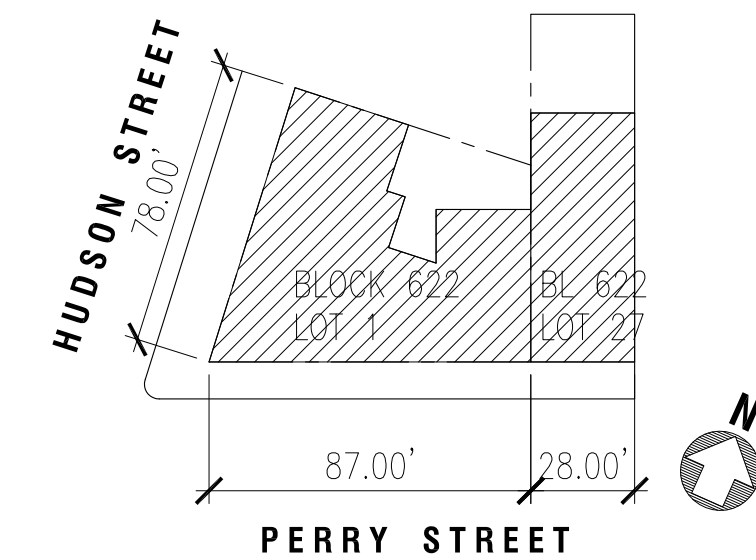
2 SOUTH ELEVATION (EXISTING CONDITIONS)
SCALE: 1/8" = 1'-0"



Architect
ZASKORSKI & NOTARO
ARCHITECTS, AIA, LLP
575 Eighth Avenue, Suite 2212
New York, NY 10018
tel: 212-239-7212 fax: 212-268-1987
website: www.znarchs.com email: info@znarchs.com

Project
PROPOSED NEW WINDOWS
101 Perry Street
New York, NY 10014

NUMBER	DATE	REVISION



KEY PLAN (NOT TO SCALE)
ADDRESS: 101 PERRY STREET
NEW YORK, NY 10014
BLOCK: 622
LOT: 1 & 27
DOB BIN: 1011281

3	07/15/14	ISSUED TO LPC
2	06/25/14	ISSUED TO LPC
1	04/10/14	ISSUED TO LPC

NUMBER	DATE	ISSUE
--------	------	-------

Drawing Title
SOUTH & WEST ELEVATIONS
EXISTING COND

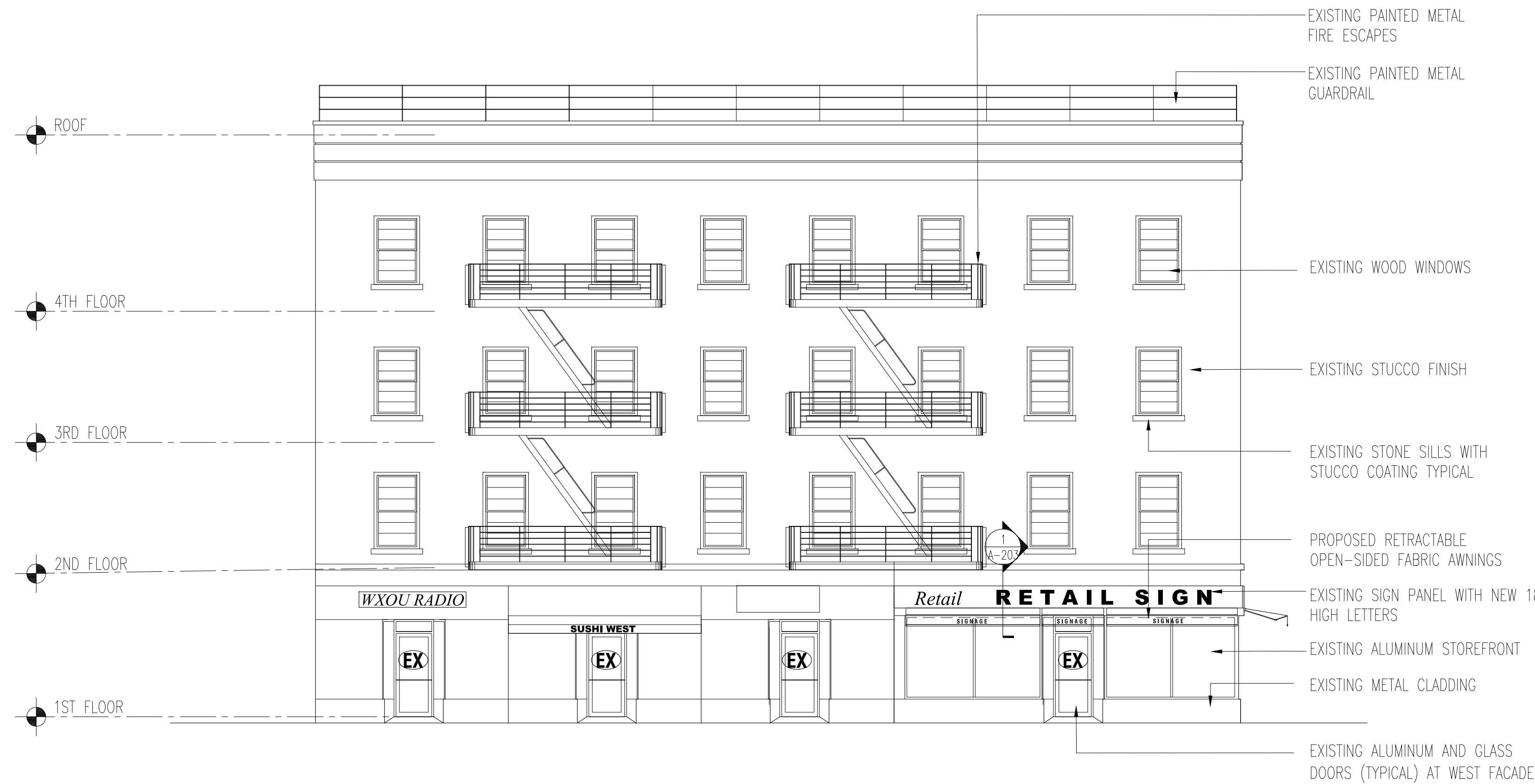
Job No.: 14-08a
Date: NOVEMBER 14, 2012
Scale: 1/8" = 1'-0"

Drawn by: KM, TMcC

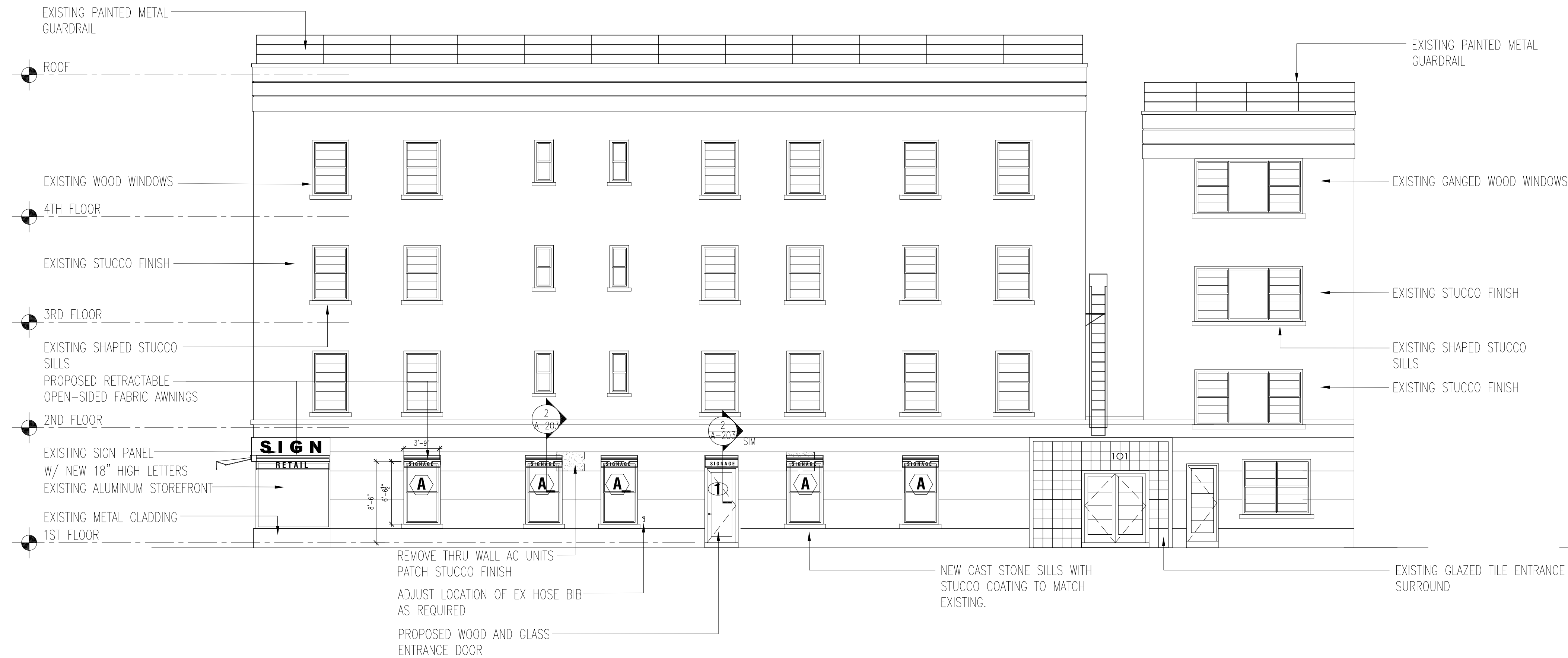
Seal: Dwg. No.:
A-201.00
Page No: 01 OF 4

© COPYRIGHT ZASKORSKI & NOTARO ARCHITECTS AIA LLP 2012

© 2014 Zaskorski & Notaro Architects, AIA, LLP. All rights reserved. No part of this drawing may be reproduced without written permission from Zaskorski & Notaro Architects, AIA, LLP.



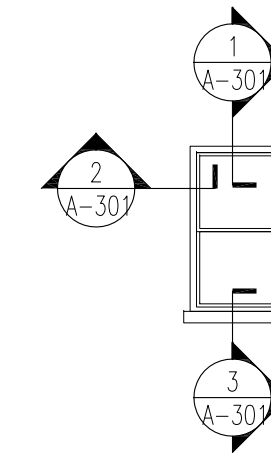
1 WEST ELEVATION (PROPOSED)
SCALE: 1/8" = 1'-0"



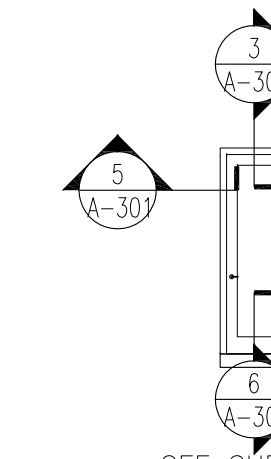
2 SOUTH & WEST ELEVATIONS (PROPOSED)
SCALE: 1/8" = 1'-0"

WINDOW / DOOR TYPES

A MARVIN ULTIMATE DOUBLE HUNG MAGNUM
WOOD DOUBLE HUNG WINDOWS PAINTED BLACK TO MATCH
EXISTING WINDOWS.
SIZE: +/- 3'-4" WIDE X 6'-4" HIGH



1 3'-0" X 7'-0" SOLID WOOD AND FULL LITE GLASS MEDIUM
STILE ENTRANCE DOOR PAINTED BLACK TO MATCH ADJACENT
EXISTING WINDOWS AND DOOR.



SEE SHEET A-301 FOR TYPICAL HEAD SILL AND JAMB
DETAILS.

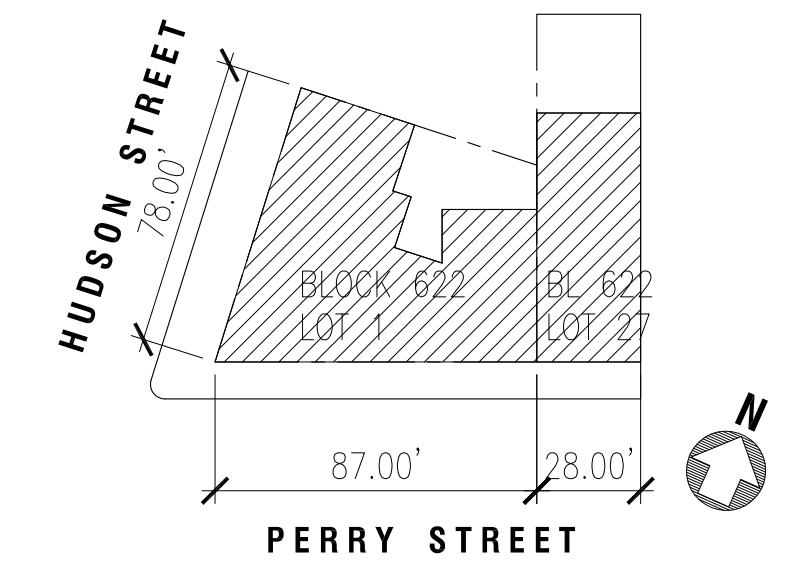
AWNINGS

FIELD COLOR: EXPRESSO BEAN CP-30 BENJAMIN MOORE
LETTER COLOR: LINEN WHITE 912 BENJAMIN MOORE
FABRIC: SUNBRELLA

Architect
ZASKORSKI & NOTARO
ARCHITECTS, AIA, LLP
575 Eighth Avenue, Suite 2212
New York, NY 10018
tel: 212-239-7212 fax: 212-268-1987
website: www.znarchs.com email: info@znarchs.com

Project
**PROPOSED NEW
WINDOWS**
101 Perry Street
New York, NY 10014

NUMBER	DATE	REVISION



KEY PLAN (NOT TO SCALE)
ADDRESS: 101 PERRY STREET
NEW YORK, NY 10014
BLOCK: 622
LOT: 1 & 27
DOB BIN: 1011281

2	06/25/14	ISSUED TO LPC
1	04/10/14	ISSUED TO LPC

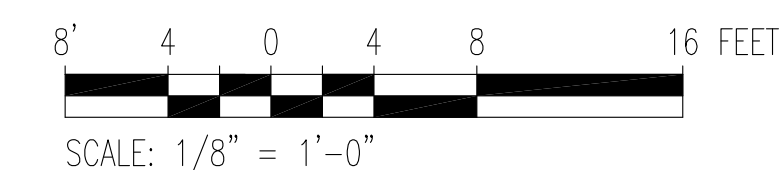
NUMBER	DATE	ISSUE
--------	------	-------

Drawing Title
**SOUTH & WEST
ELEVATIONS
PROPOSED**

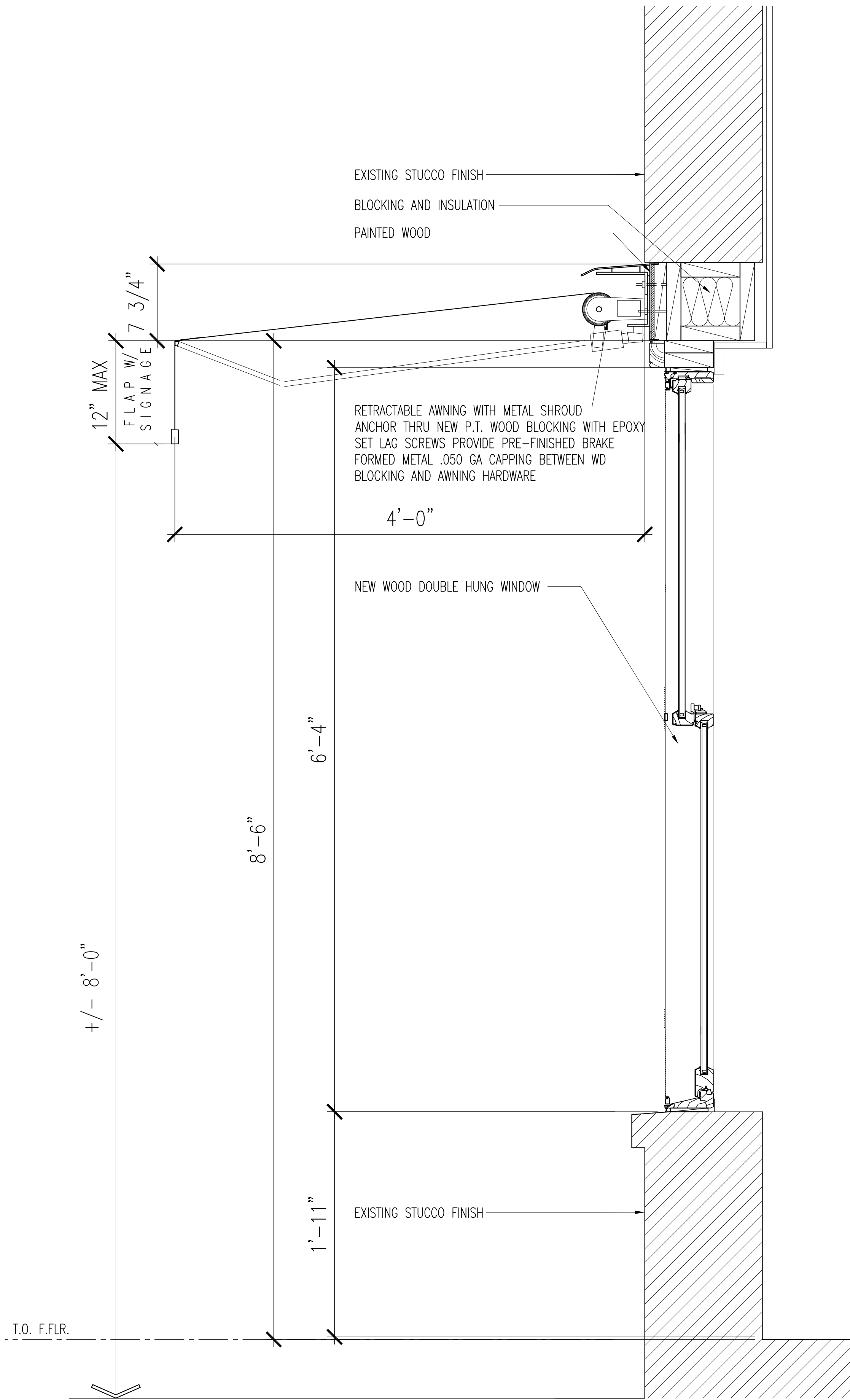
Job No.: 14-08a
Date: NOVEMBER 14, 2012
Scale: 1/8" = 1'-0"

Drawn by: KM, TMcC
Scal:
Dwg. No.:
A-202.00
Page No.: 02 OF 4

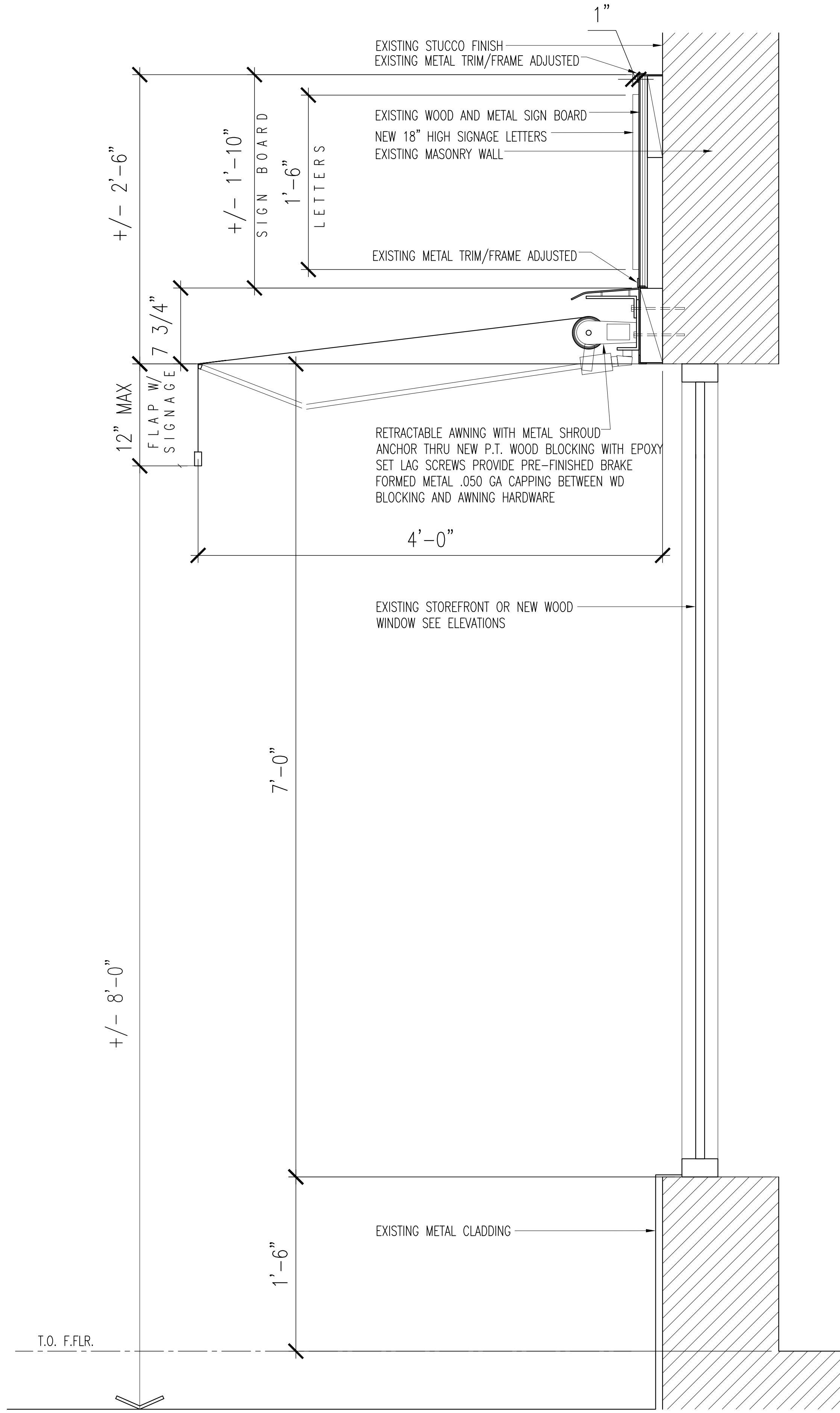
© COPYRIGHT ZASKORSKI & NOTARO ARCHITECTS AIA LLP 2012



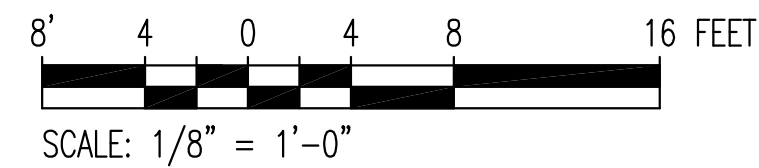
© 2014 Zaskorski & Notaro Architects, AIA, LLP. All rights reserved. 101 Perry Street, New York, NY 10014. 212-239-7212. www.znarchs.com



2 DETAIL @ AWNING (OVER DH WINDOWS)
SCALE: 1 1/2" = 1'-0"



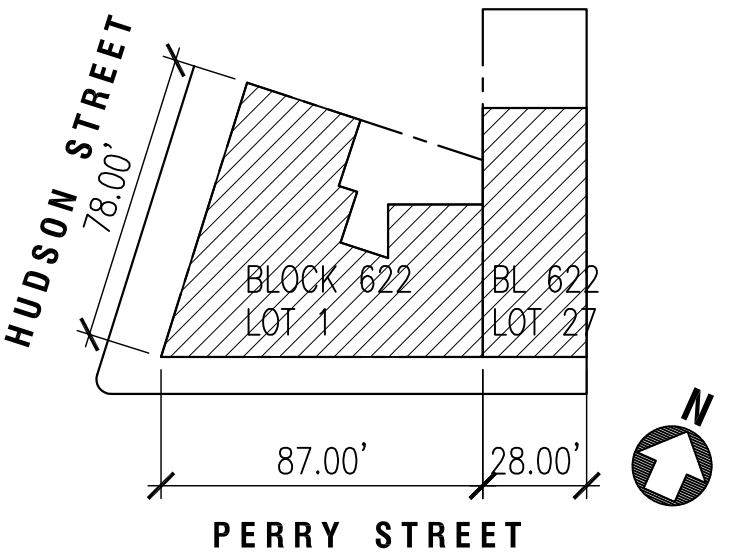
1 DETAIL @ AWNING (OVER STOREFRONT)
SCALE: 1 1/2" = 1'-0"



Architect
ZASKORSKI & NOTARO
ARCHITECTS, AIA, LLP
575 Eighth Avenue, Suite 2212
New York, NY 10018
tel: 212-239-7212 fax: 212-268-1987
website: www.znarchs.com email: info@znarchs.com

Project
PROPOSED NEW WINDOWS
101 Perry Street
New York, NY 10014

NUMBER	DATE	REVISION



KEY PLAN (NOT TO SCALE)
ADDRESS: 101 PERRY STREET
NEW YORK, NY 10014
BLOCK: 622
LOT: 1 & 27
DOB BIN: 1011281

1	07/15/14	ISSUED TO LPC
1	06/25/14	ISSUED TO LPC

NUMBER	DATE	ISSUE
--------	------	-------

Drawing Title

DETAILS

Job No.: 14-08a
Date: NOVEMBER 14, 2012
Scale: 1/8" = 1'-0"

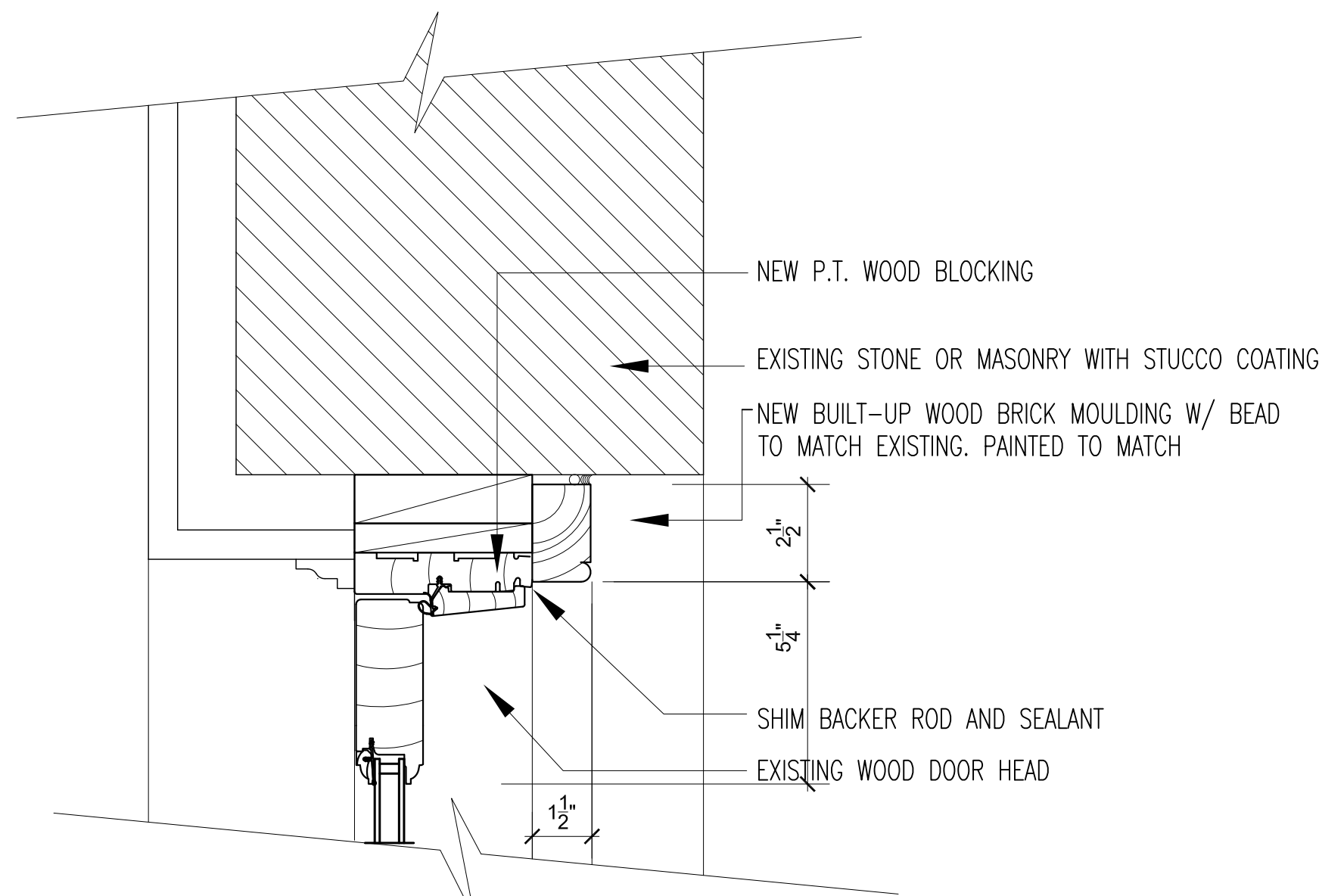
Drawn by: KM, TMcC

Seal: Dwg. No.:

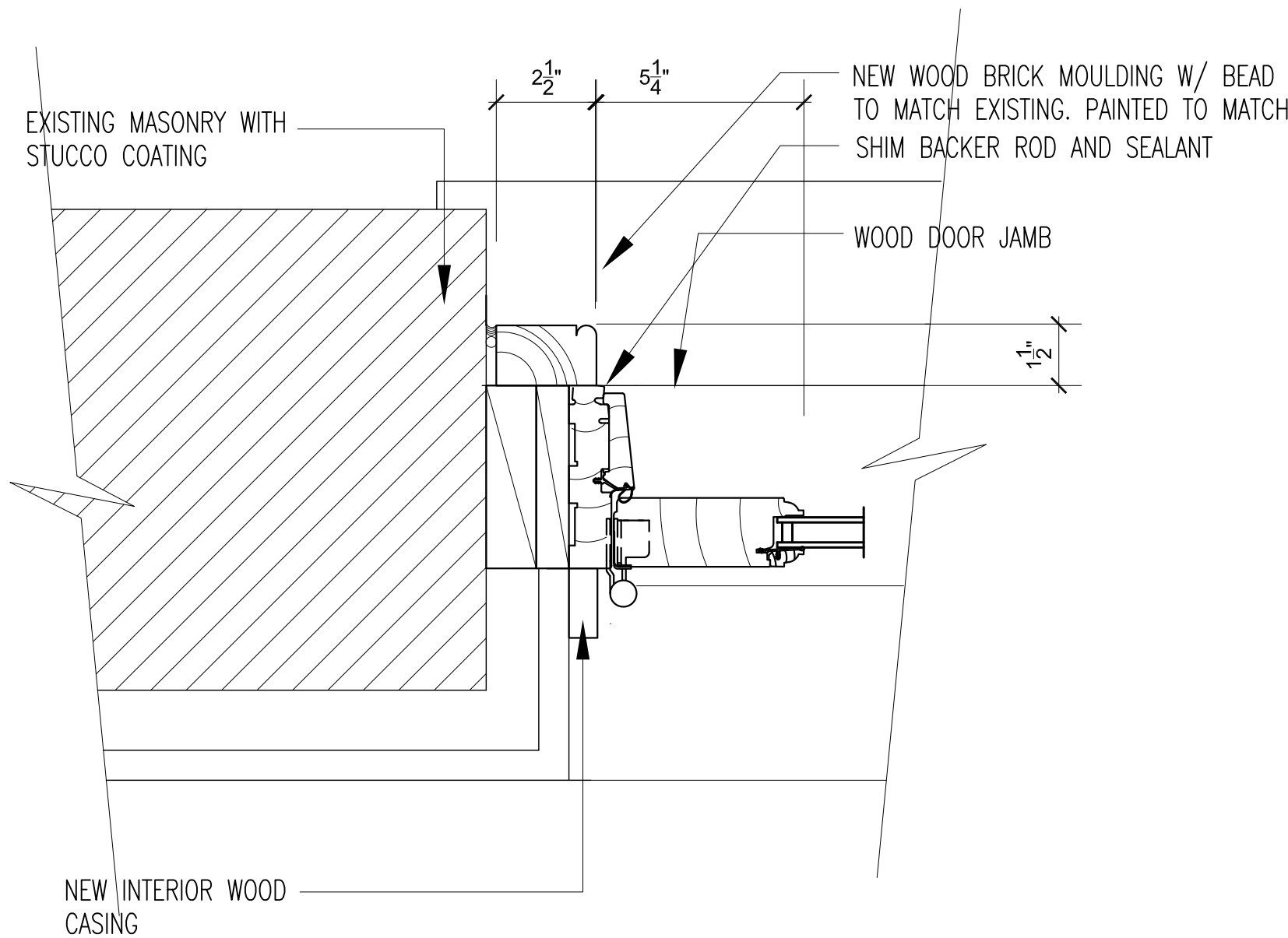
A-203.00

Page No.: 03 OF 4

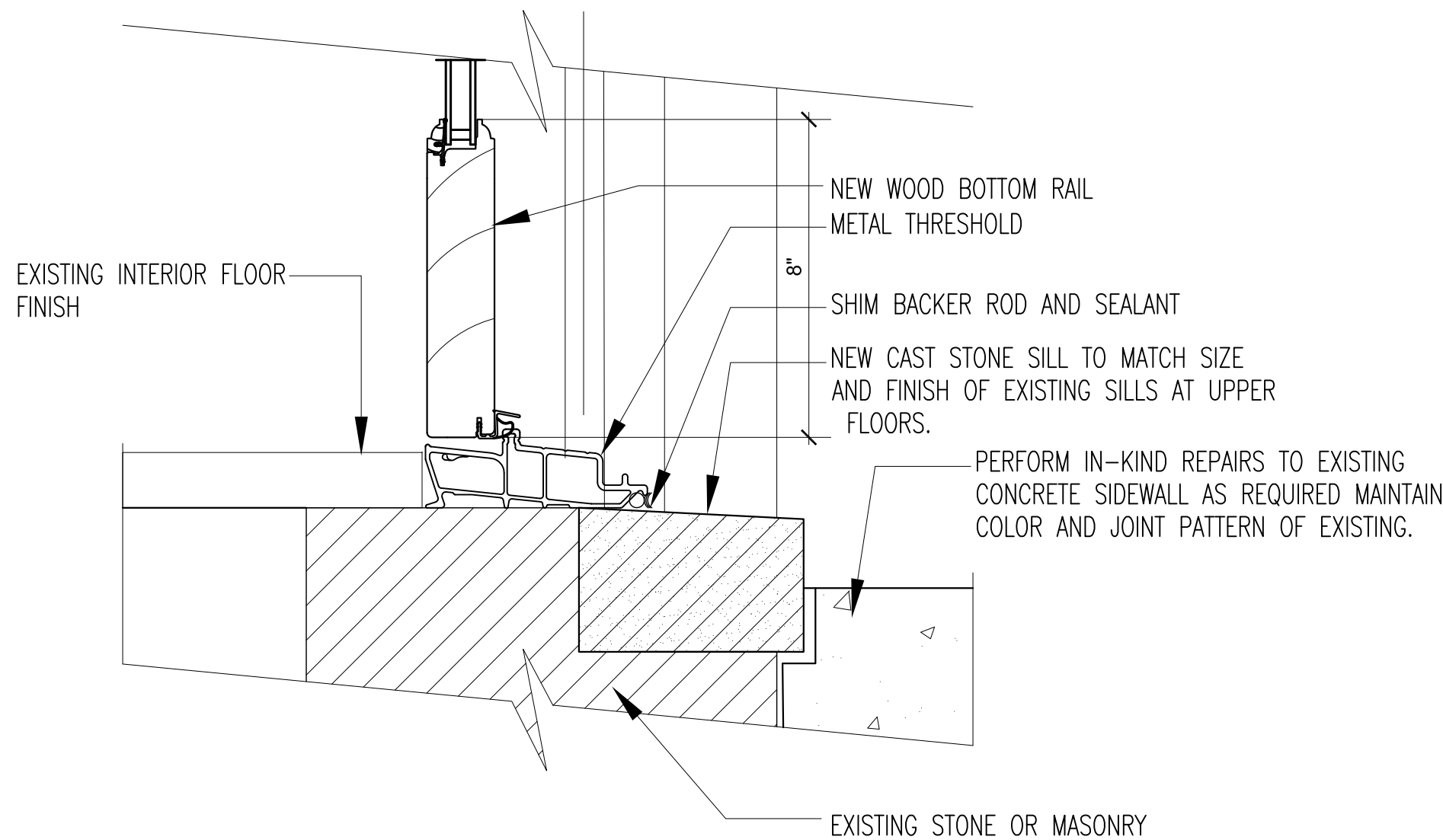
© COPYRIGHT ZASKORSKI & NOTARO ARCHITECTS AIA LLP 2012



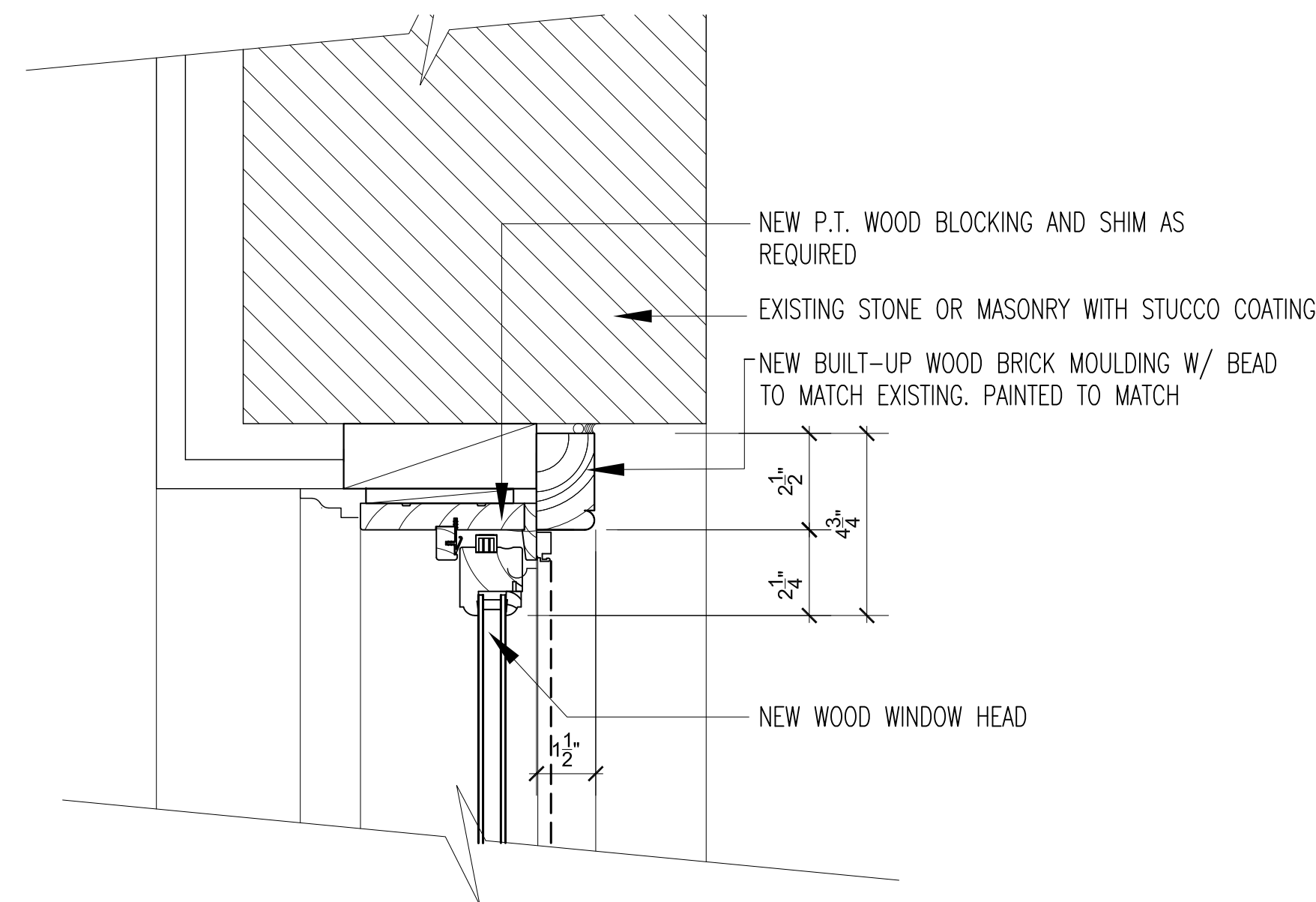
4 SILL DETAIL AT PROPOSED DOOR
SCALE: 3" = 1'-0"



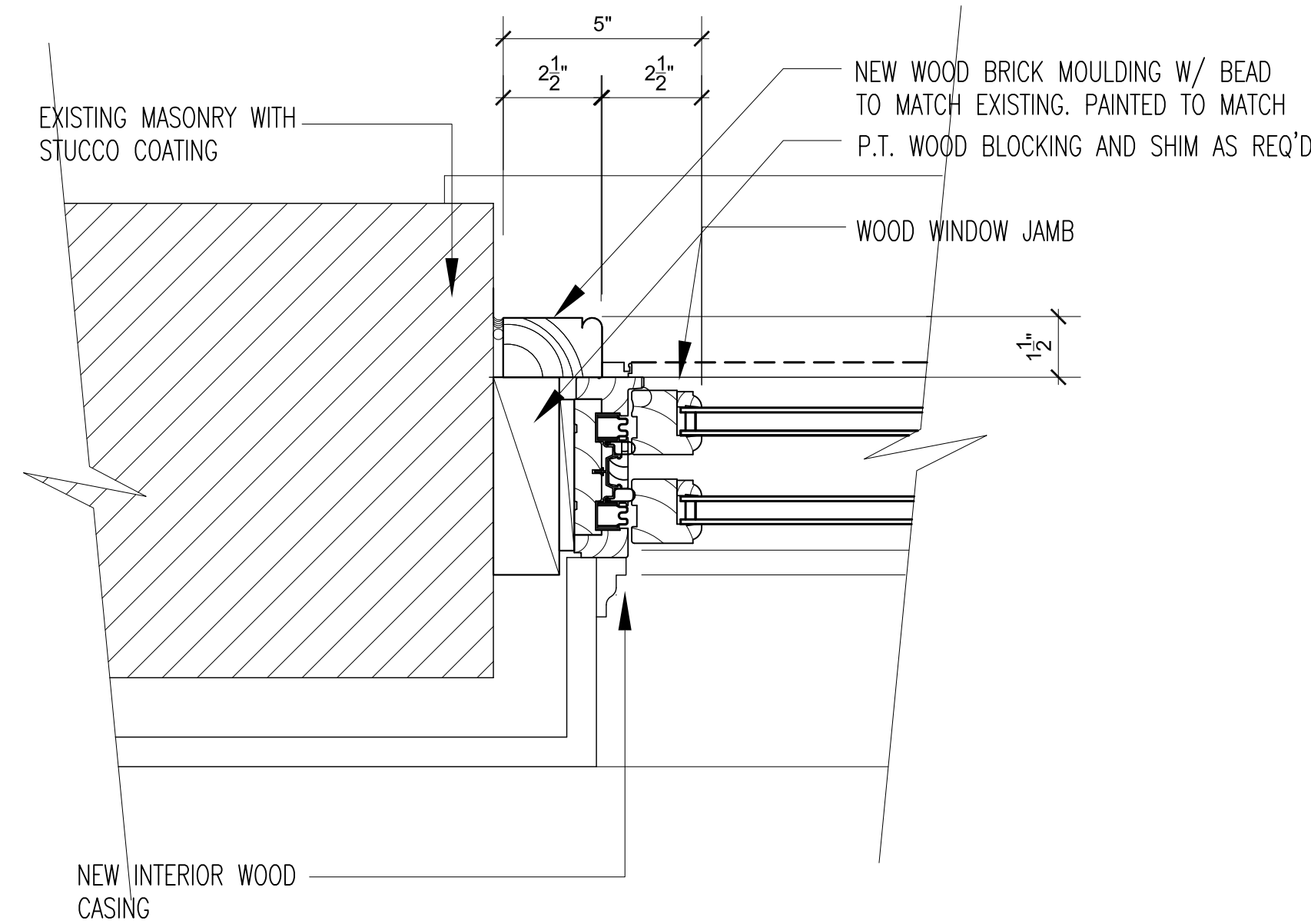
5 SILL DETAIL AT PROPOSED DOOR
SCALE: 3" = 1'-0"



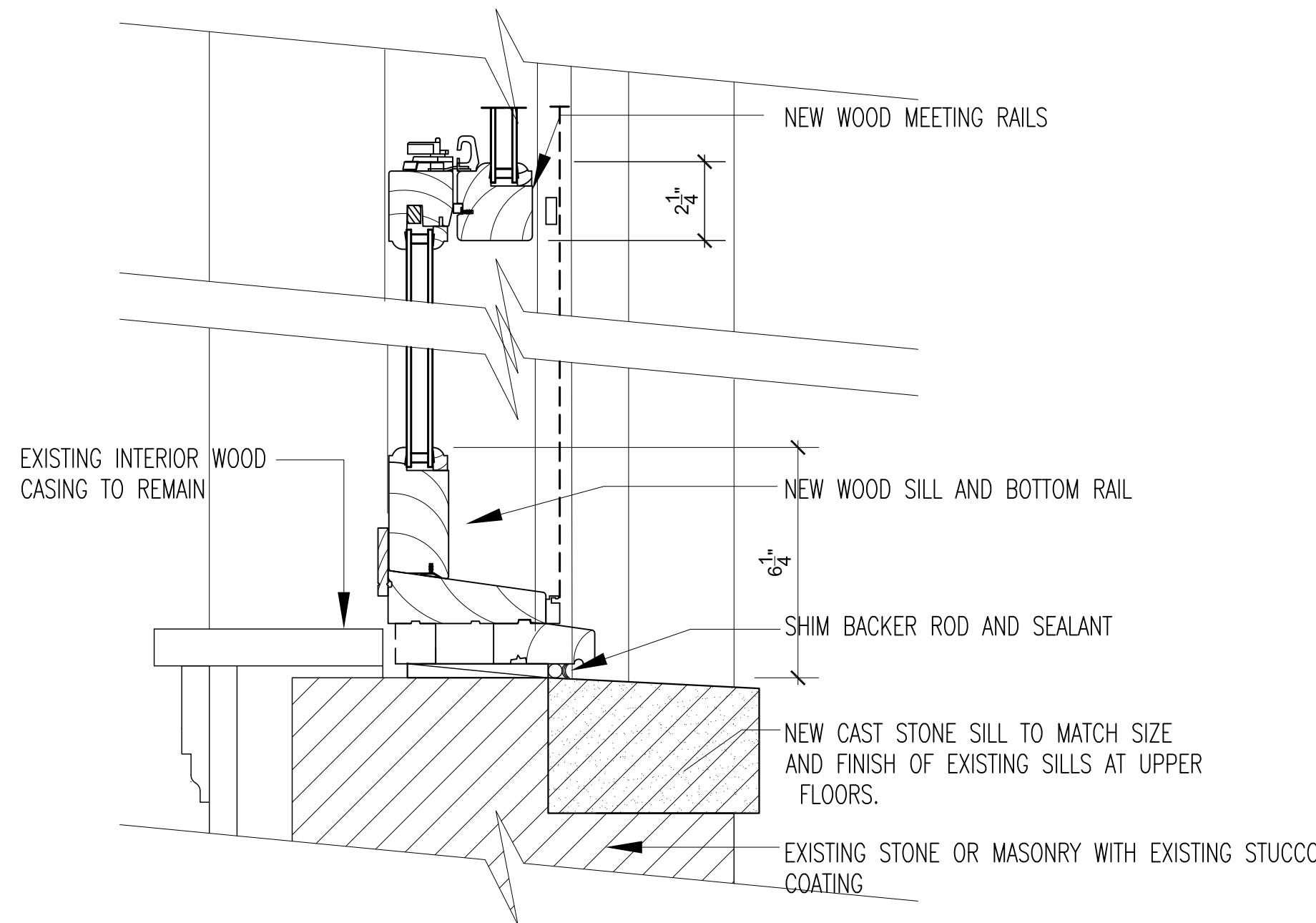
6 SILL DETAIL AT PROPOSED DOOR
SCALE: 3" = 1'-0"



1 HEAD DETAIL AT PROPOSED WINDOWS
SCALE: 3" = 1'-0"



2 JAMB DETAIL AT PROPOSED WINDOWS
SCALE: 3" = 1'-0"

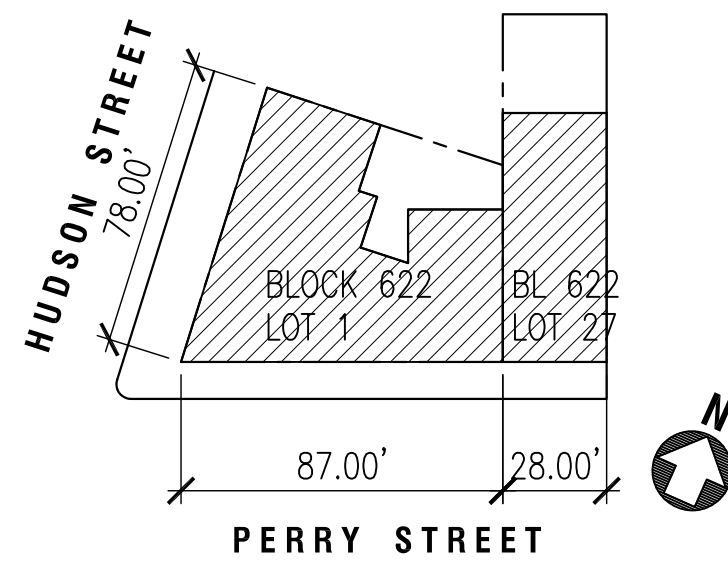


3 SILL DETAIL AT PROPOSED WINDOWS
SCALE: 3" = 1'-0"

Architect
ZASKORSKI & NOTARO
ARCHITECTS, AIA, LLP
575 Eighth Avenue, Suite 2212
New York, NY 10018
tel: 212-239-7212 fax: 212-268-1987
website: www.znarchs.com email: info@znarchs.com

Project
PROPOSED NEW WINDOWS
101 Perry Street
New York, NY 10014

NUMBER	DATE	REVISION



KEY PLAN (NOT TO SCALE)
ADDRESS: 101 PERRY STREET
NEW YORK, NY 10014
BLOCK: 622
LOT: 1 & 27
DOB BIN: 1011281

3	07/15/14	ISSUED TO LPC
2	06/25/14	ISSUED TO LPC
1	04/10/14	ISSUED TO LPC

NUMBER	DATE	ISSUE
--------	------	-------

Drawing Title
NORTH & EAST DETAILS

Job No.: 14-08a
Date: NOVEMBER 14, 2012
Scale: 1/8" = 1'-0"

Drawn by: KM, TMcC
Seal: Dwg. No.: **A-301.00**
Page No.: 03 OF 4

© COPYRIGHT ZASKORSKI & NOTARO ARCHITECTS AIA LLP 2012



101 Perry Street: Corner Buildings on Perry Street with Openings on Side Facades

7/16/2014

Mary B Dierickx Historic Preservation Consulting